

REV	ECN, ERN NO.	DATE	APPRD.
H	PRODUCT DRAWING (EAR 14498)	NOV/9/16	K.L.

ORDERING CODE: F C E 1 7 - E 0 9 P A - 4 4 0 C

SERIES FC E17=FILTERED D-SUB, ROHS

SIZE/NUMBER OF CONTACTS E09, A15, B25, OR C37

CONNECTOR STYLE P=PIN

TERMINATION TYPE A=.318" [8.08] FOOTPRINT

TO POINT OF ENGAGEMENT

2.45

[6.22]

.149 [3.78] MIN.

1.48±.020

[3.76±.051]

[.112 [2.84]]

[.056 [1.42]]

[.318 [8.08]]

TERMINATION TYPE

S=SOCKET

P=PIN

CONNECTOR STYLE

SIZE/NUMBER OF CONTACTS

MODIFIER

O=STANDARD

FILTER CAPACITANCE

5=1000 pF

B=100 pF

7=1200 pF

6=1300 pF

F=330 pF

L=2200 pF

E=380 pF

1=470 pF

9=5600 pF

8=47000 pF

4=820 pF

N=NO FILTERS

REFER TO AMPHENOL CATALOGUE FOR FILTER PERFORMANCE CHARACTERISTICS

MOUNTING

2=.120 [3.05] DIA THROUGH HOLE

3=#4-40 UNC SELF-LOCKING THREAD

4=#4-40 UNC THREAD

6=M3 x 0.5 THREAD

E=CODE 4 MOUNTING WITH #4-40 UNC HEX JACK SOCKETS SUPPLIED.

F=#4-40 UNC FIXED ROUND JACK SOCKET

1. MATERIALS: ALL MATERIALS ARE ROHS COMPLIANT.

- SHELL: STEEL, TIN PLATED

- CONTACTS: PHOSPHOR BRONZE, PLATED WITH GOLD OVER 50µ" [1.27 MICRONS] MINIMUM NICKEL IN THE MATING AREA AND 100µ" [2.54 MICRONS] MINIMUM REINFORCED, UL FLAMMABILITY RATING 94V-0, COLOUR: BLACK

- INSULATOR: ENGINEERING THERMOPLASTIC, GLASS MATE TIN ON THE TAIL.

- BOARDLOCK: COPPER ALLOY, TIN PLATED

- MOUNTING HARDWARE, STEEL OR COPPER ALLOY, TIN OR NICKEL PLATED.

2. CONTACT RESISTANCE: 15 MILLIOHMS MAXIMUM

3. INSULATION RESISTANCE: 3000 MEGOHMS MINIMUM

4. CURRENT RATING: 5 AMPS MAXIMUM

5. OPERATING TEMPERATURE: -40°C TO 85°C

6. TOLERANCE UNLESS INDICATED OTHERWISE: ±.005 [0.13]

NOTES:

DESIGNED BY: DRAWN K. LAMBIE

DATE: APR08/05

FC E17 SERIES FILTERED D-SUB CONNECTOR, PIN & SOCKET, RIGHT ANGLE .318 [8.08] F/P, PLASTIC MOUNTING BRACKET & BOARDLOCK, ROHS COMPLIANT

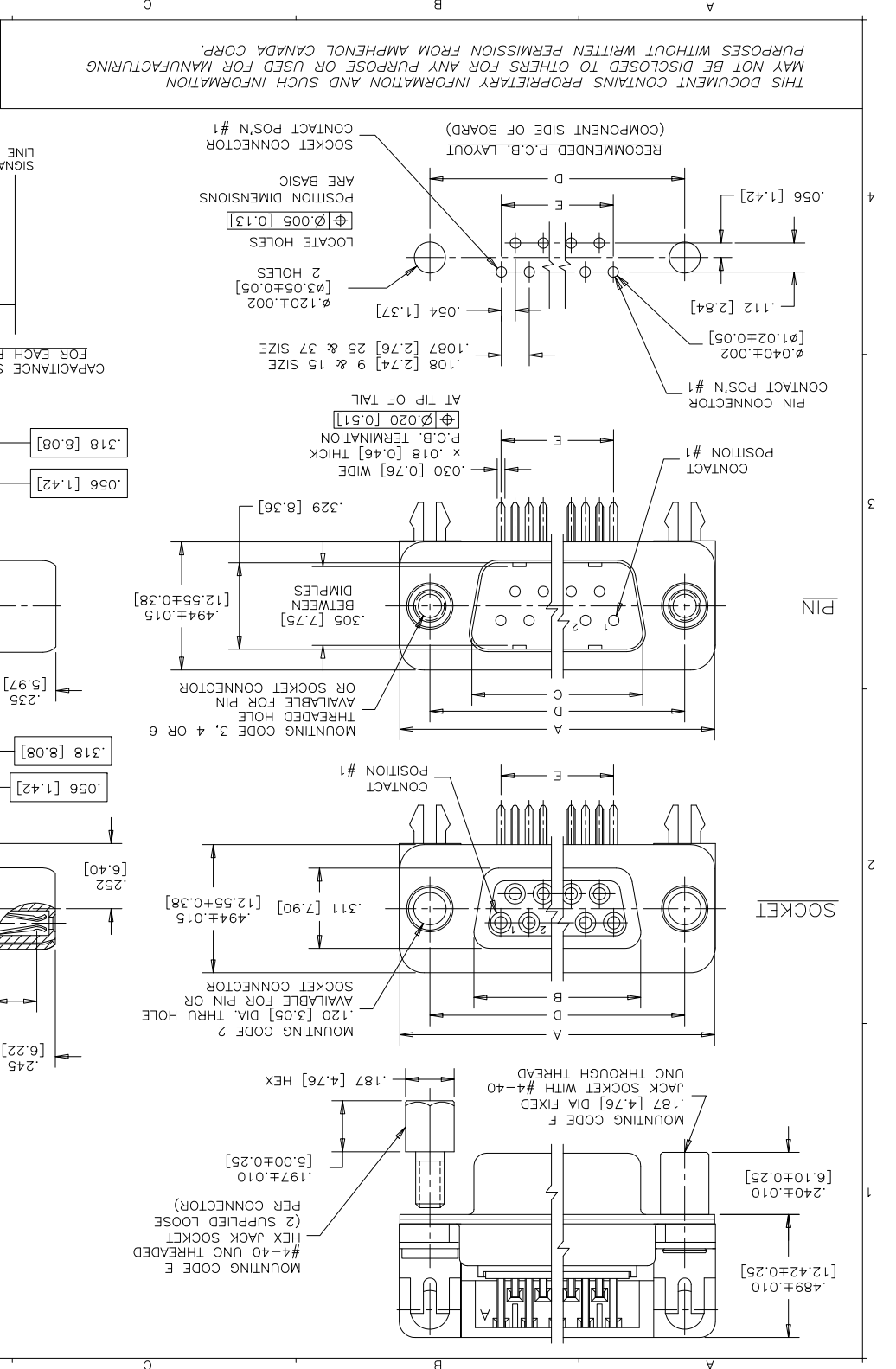
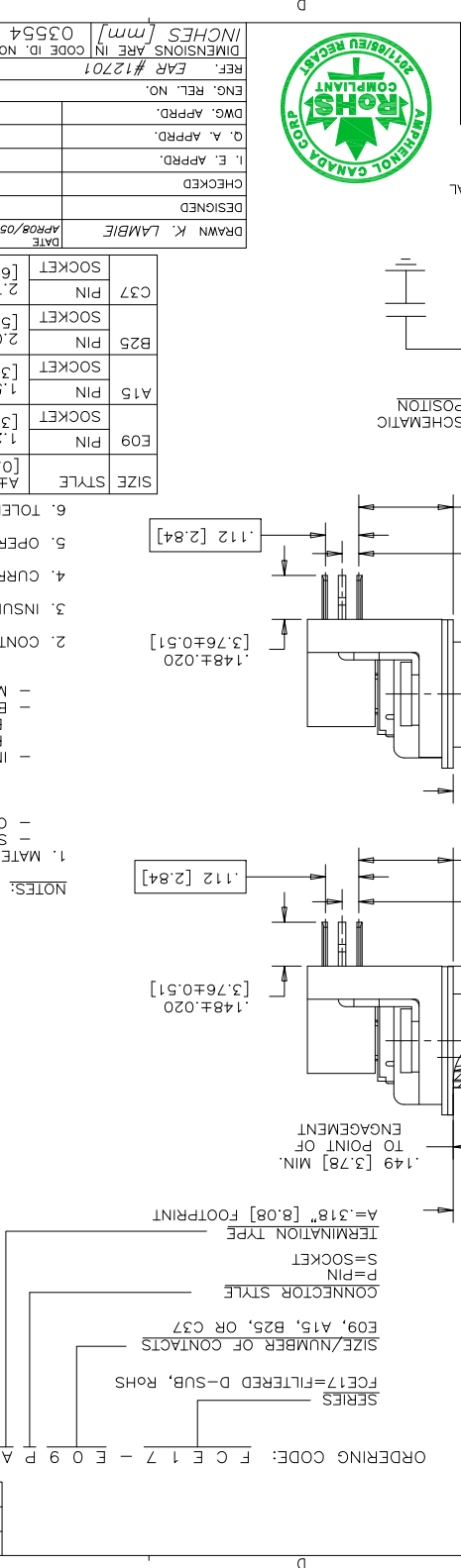
DWG NO. P-FCE17-XXXXA-XXOX

REV. H

SIZE	STYLE	A±.015	B±.005	C±.005	D±.005	E BSC.
E09	PIN	1.213	.666 [16.92]	[24.99]	[4.32]	1.097
A15	PIN	1.541	.994 [25.25]	[33.32]	1.312	7.56
B25	PIN	2.088	1.534 [38.96]	1.852	1.304	1.304
C37	PIN	2.729	2.182 [55.42]	2.500	1.956	1.956
SOCKET		[69.32]	2.159 [54.84]	[63.50]	[49.68]	

REV	DATE	APPRD/05
H		

AMPHENOL Canada Corp.



THIS DOCUMENT CONTAINS PROPRIETARY INFORMATION AND SUCH INFORMATION MAY NOT BE DISCLOSED TO OTHERS FOR ANY PURPOSE OR USED FOR MANUFACTURING PURPOSES WITHOUT WRITTEN PERMISSION FROM AMPHENOL CANADA CORP.

X-ON Electronics

Largest Supplier of Electrical and Electronic Components

Click to view similar products for [D-Sub Standard Connectors](#) category:

Click to view products by [Amphenol](#) manufacturer:

Other Similar products are found below :

[DCM37S732N](#) [DAM15P500](#) [DEV09S364GTLF](#) [DEM09P032N](#) [DDM50P732N](#) [DAM15S332N](#) [173109-2218](#) [173109-2466](#) [173109-2436](#)
[173109-2435](#) [56F706-005-LI](#) [56F711-015](#) [015-0341-000](#) [015-0372-008](#) [015-8544-011](#) [017041-0005](#) [020419-0104](#) [012-0515-000](#) [012-9507-](#)
[034](#) [012-9507-114](#) [012-9534-001](#) [020745-0008](#) [609-25P](#) [M24308/2-23Z](#) [M243082310F](#) [M243082410F](#) [M243082411F](#) [M24308/4-21](#)
[CT1A18-11PSA206](#) [CT1N36-5SC](#) [CT2-16S-17PS](#) [CT2-20-15PCAU](#) [CT2-24-12PS](#) [CT2-24-28PSF127A206](#) [CT2-32-9PC](#) [CT6F9767-14-4-](#)
[14S-5PC](#) [CT6FA10SL-4PS](#) [CT7-18-10SC](#) [CT7-18-10SCAU](#) [CT7-18-12SCAU](#) [CT7-18-1PC](#) [CT7-18-1PCAU](#) [CT7-18-21SCAU](#) [M83513/01-](#)
[FC](#) [M83723/76W24619 L/C](#) [M85049/48-3-2F](#) [69001-865](#) [6STD09PCM99B70X](#) [6STD09SCM99B30X](#) [6STD09SCT99S40X](#)