

DO NOT SCALE FROM THIS PRINT

ZF5-XX-XX-XX-WT-XX

No OF POSITIONS
-04 THRU -50

LEAD STYLE
-01: CONTACT BOTTOM
-02: CONTACT TOP
-03: VERTICAL

OPTIONS
-TR: TAPE AND REEL (SEE SHEET 3, FIG. 3)
WELD TAB

PLATING SPECIFICATION
-T: PURE TIN, MATTE FINISH
-TM: PURE TIN, MATTE FINISH (SEE NOTE 7)

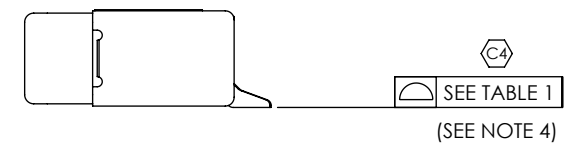
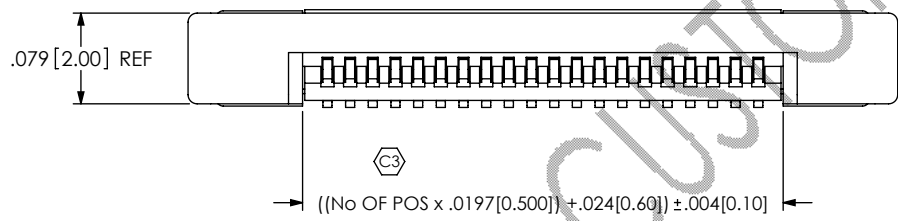
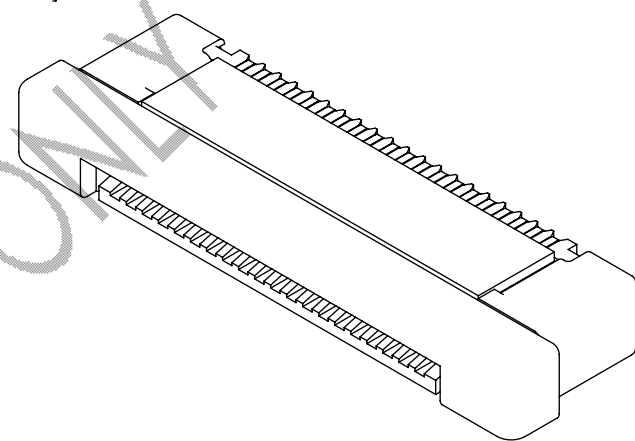
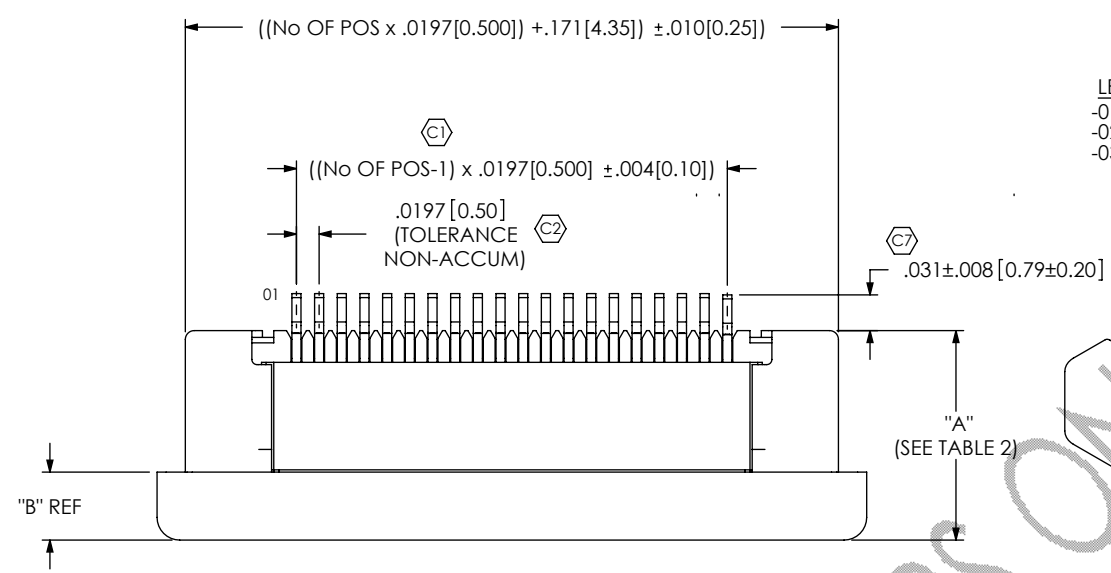


FIG 1
ZF5-20-01-X-WT SHOWN
(WITH CAM CLOSED)

TABLE 2

No OF POS.	"A"	"B"	"C"	"D"
-04 THRU -29	.182 [4.62]	0.059 [1.50]	0.082 [2.08]	0.185 [4.70]
-30 THRU -39	.186 [4.72]	0.063 [1.60]	0.086 [2.18]	0.189 [4.80]
-40 THRU -50	.190 [4.82]	0.067 [1.70]	0.090 [2.29]	0.193 [4.90]

- NOTES:
- ③ REPRESENTS A CRITICAL DIMENSION.
 - MAX BURR ALLOWANCE: .0010[.025].
 - MIN CONTACT PUSHOUT FORCE: 6 OZ.
 - CO-PLANARITY INCLUDES TAILS AND WELD TABS.
 - WELD TAB RETENTION: 6 OZ.
 - BREAKOFF BURR NOT TO EXCEED .007[0.18] AND MUST REMAIN ATTACHED.
 - .000040 MIN NICKEL AND .000100 - .000200 MIN TIN
 - PIN 1 TO HAVE ORIENTATION AS SHOWN.
 - NOTE DELETED.

TABLE 1

No OF POS.	COPLANARITY
-04 THRU -30	.0040[0.101]
-31 THRU -50	.0060[0.152]

UNLESS OTHERWISE SPECIFIED, DIMENSIONS ARE IN INCHES. TOLERANCES ARE:
 DECIMALS ANGLES
 .XX: $\pm .01[0.3]$ 2°
 .XXX: $\pm .005[0.13]$
 .XXXX: $\pm .0020[0.051]$

PROPRIETARY NOTE
 THIS DOCUMENT CONTAINS INFORMATION CONFIDENTIAL AND PROPRIETARY TO SAMTEC, INC. AND SHALL NOT BE REPRODUCED OR TRANSFERRED TO OTHER DOCUMENTS OR DISCLOSED TO OTHERS OR USED FOR ANY PURPOSE OTHER THAN THAT WHICH IT WAS OBTAINED WITHOUT THE EXPRESSED WRITTEN CONSENT OF SAMTEC, INC.

MATERIAL: DO NOT SCALE DRAWING SHEET SCALE: 6:1
 HOUSING: LCP, COLOR: NATURAL
 CAM SLIDER: LCP, COLOR: BLACK
 CONTACT & WELD TAB:
 PHOS BRONZE
 MAX FLASH ALLOWED: .002
 MAX GATE VESTIGE: .002
 F:\DWG\MISC\Mktg\ZF5-XX-XX-XX-WT-XX-MKT.SLDDRW

DESCRIPTION:
 ZERO INSERTION FORCE .5mm ASSEMBLY

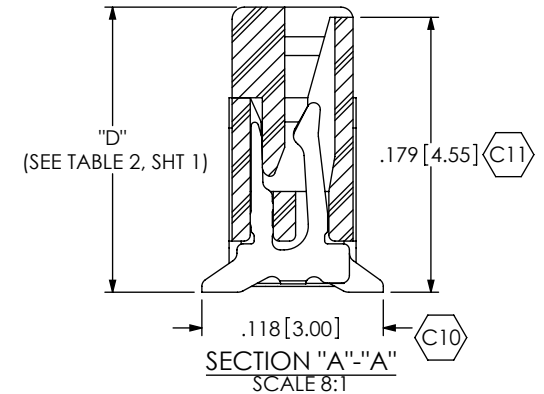
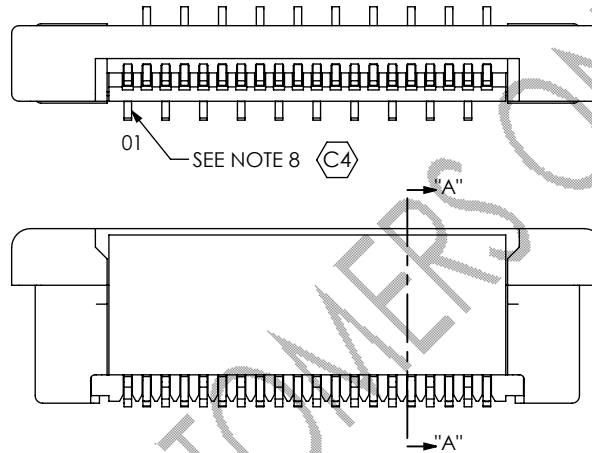
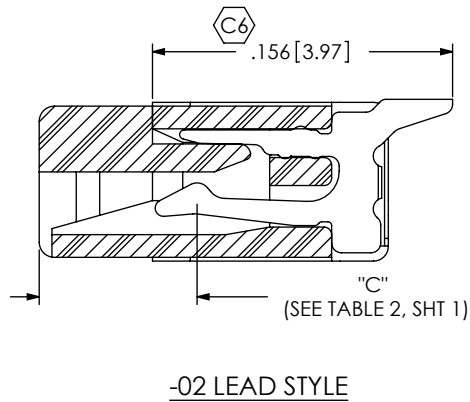
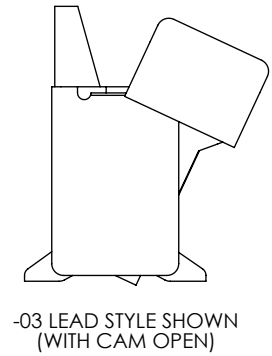
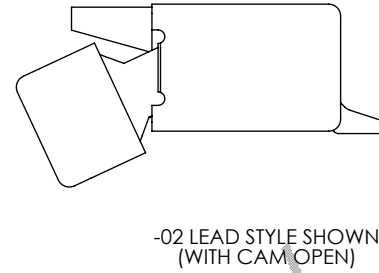
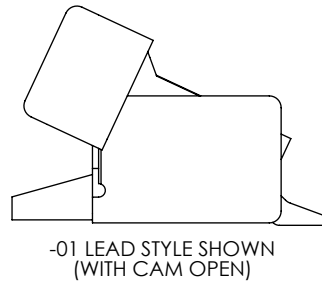
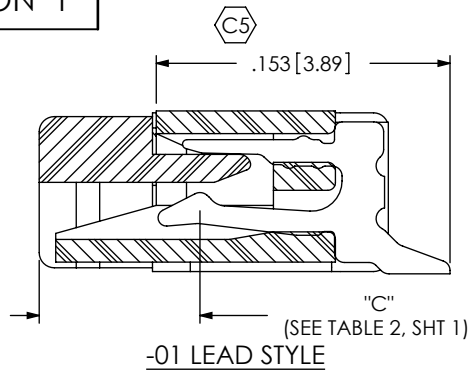
DWG. NO. ZF5-XX-XX-XX-WT-XX

BY: DEAN P 12/12/2000 SHEET 1 OF 3

samtec
 520 PARK EAST BLVD, NEW ALBANY, IN 47150
 PHONE: 812-944-6733 FAX: 812-948-5047
 e-Mail: info@SAMTEC.com code 55322

REVISION Y

APPLICATION VIEWS



PACKAGING VIEWS
(-TR OPTION SHOWN ON SHEET 3)
[PARTS TO HAVE POSITION #1 LOADED IN
SAME DIRECTION AS ARROW ON TUBE]

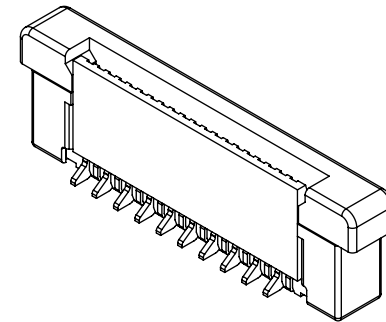
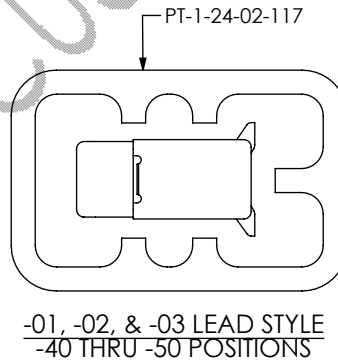
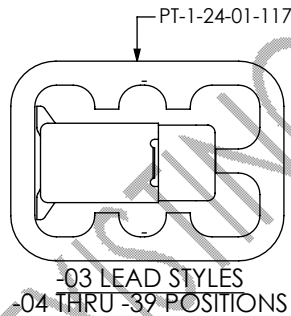
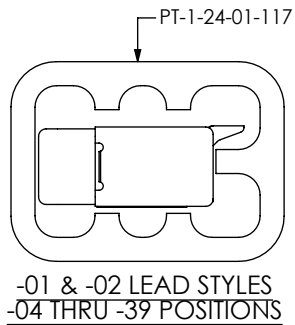


FIG 2
-03 LEAD STYLE
(SAME AS FIG 1, EXCEPT AS SHOWN)
(ZF5-20-03-T-WT-SHOWN)

-01 & -02 LEAD STYLES
-04 THRU -39 POSITIONS

-03 LEAD STYLES
-04 THRU -39 POSITIONS

-01, -02, & -03 LEAD STYLE
-40 THRU -50 POSITIONS

PACKAGING TABLE

LEAD STYLE	No OF POS.	PACKAGING TUBE	TUBE PLUG
-01, -02 & -03	-04 THRU -39	PT-1-24-01-117	TP-24
	-40 THRU -50	PT-1-24-02-117	TP-24

PROPRIETARY NOTE

THIS DOCUMENT CONTAINS INFORMATION CONFIDENTIAL AND PROPRIETARY TO SAMTEC, INC. AND SHALL NOT BE REPRODUCED OR TRANSFERRED TO OTHER DOCUMENTS OR DISCLOSED TO OTHERS OR USED FOR ANY PURPOSE OTHER THAN THAT WHICH IT WAS OBTAINED WITHOUT THE EXPRESSED WRITTEN CONSENT OF SAMTEC, INC.

DO NOT SCALE DRAWING

SHEET SCALE: 10:1



520 PARK EAST BLVD, NEW ALBANY, IN 47150
PHONE: 812-944-6733 FAX: 812-948-5047
e-Mail: info@SAMTEC.com code 55322

DESCRIPTION:
ZERO INSERTION FORCE .5mm ASSEMBLY

DWG. NO.
ZF5-XX-XX-XX-WT-XX

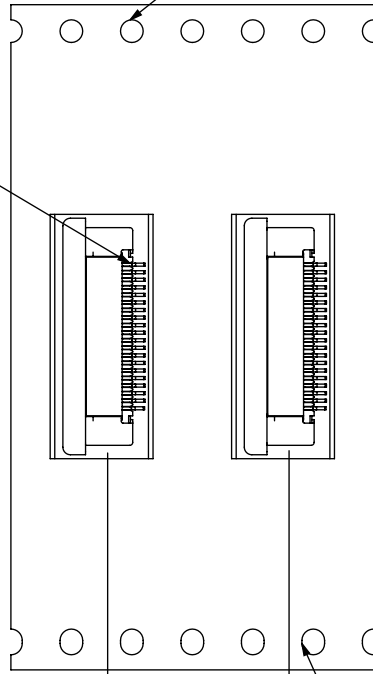
BY: DEAN P 12/12/2000 SHEET 2 OF 3

-01 LEAD STYLE

NOTE: PIN 1 CLOSEST TO ROUND HOLES

ROUND HOLES

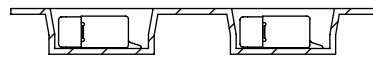
POS 1



.472 [12.00]
REF

OBLONG HOLES

USER DIRECTION OF UN-REELING
POCKET NOT DETAILED

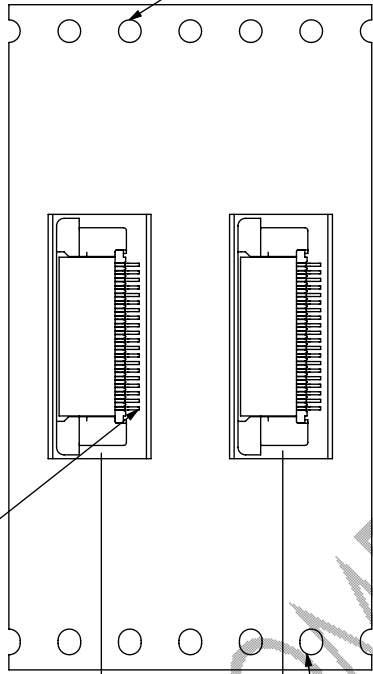


-02 LEAD STYLE

NOTE: PIN 1 CLOSEST TO OBLONG HOLES

ROUND HOLES

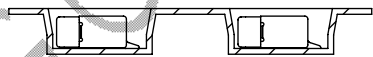
POS 1



.472 [12.00]
REF

OBLONG HOLES

USER DIRECTION OF UN-REELING
POCKET NOT DETAILED

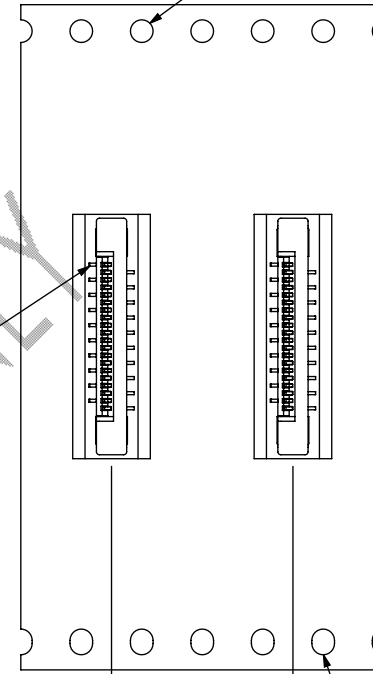


-03 LEAD STYLE

NOTE: PIN 1 CLOSEST TO ROUND HOLES

ROUND HOLES

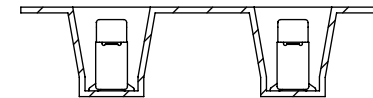
POS 01



.472 [12.00]
REF

OBLONG HOLES

USER DIRECTION OF UN-REELING
POCKET NOT DETAILED



EXISTING CUSTOMERS ONLY

PROPRIETARY NOTE

THIS DOCUMENT CONTAINS INFORMATION CONFIDENTIAL AND PROPRIETARY TO SAMTEC, INC. AND SHALL NOT BE REPRODUCED OR TRANSFERRED TO OTHER DOCUMENTS OR DISCLOSED TO OTHERS OR USED FOR ANY PURPOSE OTHER THAN THAT WHICH IT WAS OBTAINED WITHOUT THE EXPRESSED WRITTEN CONSENT OF SAMTEC, INC.

SHEET SCALE: 2:1



520 PARK EAST BLVD, NEW ALBANY, IN 47150
PHONE: 812-944-6733 FAX: 812-948-5047
e-Mail: info@SAMTEC.com code 55322

DESCRIPTION:
ZERO INSERTION FORCE .5mm ASSEMBLY

DWG. NO. ZF5-XX-XX-XX-WT-XX

BY: DEAN P 12/12/2000 SHEET 3 OF 3

X-ON Electronics

Largest Supplier of Electrical and Electronic Components

Click to view similar products for [samtec](#) manufacturer:

Other Similar products are found below :

[TW-20-03-H-6-175-225](#) [YTW-20-07-H-6-520-110](#) [TW-10-08-H-D-616-107](#) [TW-15-08-H-D-600-080](#) [TW-30-08-H-D-616-107](#) [MTMM-108-05-H-D-220](#) [MTMM-103-05-H-D-220](#) [MTMM-120-06-H-D-180](#) [SSQ-108-01-SM-S](#) [SSQ-105-01-SM-S](#) [ESQT-112-02-F-D-375](#) [ESQT-135-03-F-D-380](#) [FTSH-111-01-L-DV](#) [QTE-060-01-L-D-A](#) [MSAS-179-ZUGG-18](#) [MTMM-103-05-H-D-300](#) [MTSW-103-07-F-S-240](#) [MTSW-125-24-H-D-285](#) [ERF8-020-05.0-S-DV-K-TR](#) [IDMD-10-T-12.00-A-G-R](#) [IPL1-112-01-L-D-K](#) [IPL1-116-01-H-D](#) [SFML-115-01-S-D](#) [SFML-125-01-S-D](#) [SFSDT-15-28-H-04.50-DR-NDS](#) [LSHM-120-02.5-L-DV-A-N-K-TR](#) [SMS-125-02-S-D](#) [ESQ-110-14-G-D](#) [ESQT-125-03-F-D-310](#) [ESQT-133-03-F-D-350](#) [SO-0515-01-01-02](#) [SQW-120-01-F-D-VS-A](#) [SSQ-111-01-G-S](#) [SSW-110-02-H-D](#) [FJH-50-D-12.00-4](#) [FLE-125-01-G-DV-A](#) [CES-150-01-T-D](#) [QFS-052-01-SL-D-RA](#) [QTE-040-04-L-D-A](#) [QTH-020-04-F-D-DP-A-K-TR](#) [QTH-060-01-F-D-A](#) [QTH-090-04-L-D-A](#) [TFM-110-02-S-D](#) [TFM-115-02-L-DH](#) [TFM-120-12-S-D-LC](#) [TFML-140-02-S-D](#) [TLW-107-05-G-D](#) [TMM-140-03-S-Q](#) [BDL-136-T-E](#) [TSS-132-01-G-S](#)