



F&F Filipowski sp. j
ul. Konstytucyjowa 79/81
95-200 Pabianice, POLAND
tel/fax 48 42 2270974
e-mail: fif@fif.com.pl

ZI-12

STABILISED POWER SUPPLY pulse



www.fif.com.pl

F&F products are covered by an 24 months warranty from date of purchase

PURPOSE

ZI is used to supply electrical and electronic equipment with an average power consumption, which require stable, filtered voltage independent of circuit voltage changes.

FUNCTIONING

The input terminals can be connected voltage AC or DC (pulse or filtered). Due to the high frequency converter, some very sensitive radio or microprocessor can operate wrong. It is recommended that you install an additional filter (consisting of a choke current compensated for inductivity 2x5-15mH and a capacitor C = 0.33-1µF) between power supply and receiver. With increasing load above I_{max} supplier will stabilize the current, and output voltage will decrease. When the power supply output terminals are closed then work with frequency around 1,5kHz. it is indicated by clear noise.

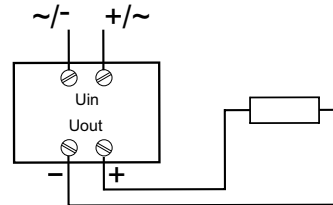
ASSEMBLY

1. Take OFF the power.
2. Power cable connect to input joints..
3. Receiver connet to output joints with marked polarity.

TECHNICAL DATA

supply U _{in}	12÷28V AC 16÷37V DC
output voltage U _{out}	12V DC
output current	3A
keying frequency	52kHz
current limitation	I _{max} = 110% of output current
minimal load	0%
working temperature	-10÷60°C
weight	150g
connection	screw terminals 2,5mm ²
dimensions	3 modules (52,5mm)
fixing	on rail TH-35

WIRING DIAGRAM



A090813

X-ON Electronics

Largest Supplier of Electrical and Electronic Components

Click to view similar products for [DIN Rail Power Supplies](#) category:

Click to view products by [F&F](#) manufacturer:

Other Similar products are found below :

[PS-3015](#) [PSP-480S48](#) [PSR-SD25](#) [PS-S6024](#) [DRP048V120W1BA](#) [DVP01PU-S](#) [DVP06AD-S](#) [DVP06XA-S](#) [DVDPNET-SL](#) [DVPDT01-S](#)
[DVPPS01](#) [DVPPS02](#) [KHNA30F-5](#) [KHNA60F-12](#) [KHNA60F-24](#) [S8JX-G01524](#) [S8JX-G01548C](#) [S8JX-G03512D](#) [S8VS-09024B-F](#) [PS-6012](#)
[PS9Z-5R1G](#) [PS-C24024](#) [PSC-9648](#) [5607189](#) [KHNA30F-24](#) [KHNA480F-24](#) [KHNA90F-12](#) [KHNA90F-24](#) [DVP08ST11N](#) [DVPACAB530](#)
[DVPCOPM-SL](#) [DVPEN01-SL](#) [DVPPF01-S](#) [S8JX-G10012](#) [S8JX-G15024](#) [CBI1210A](#) [HB5-3/OV-A+G](#) [SS14011524](#) [S8JX-G01505C](#) [S8TS-](#)
[06024-E1](#) [PS-S2012](#) [PSW-12024](#) [PS-UPS40](#) [PSC-6024](#) [S8VS-48024A-F](#) [PSD-A60W12](#) [96PS-A120WDIN](#) [PSD-A60W48](#) [S8JX-G03515CD](#)
[PSD-A40W12](#)