

# CLIFF

## Cliffcon® 4 Pole Connectors



4PC/P/LV (FCR2066)



4PC/P/HV (FCR2067)



4PC/P90/LV (FCR20663)



4PC/P90/HV (FCR20673)



4PC/S/LV (FCR2068)



4PC/S/HV (FCR2069)

The **CLIFF® Cliffcon®** 4 pole connectors are intended for any application where a reliable locking touch proof connector system is required. Incorporating a tough, durable construction with gold plated touch proof contacts to IEC65, IEC348 and IEC1010-1, easy locking / unlocking mechanism and integral cable clamp, **Cliffcon®** is the ideal connector for many different applications. Receptacles are available for chassis, horizontal and vertical PCB mounting. Specific, non-compatible versions are designated for low (LV) and high (HV) voltage applications.

### Significant features include:

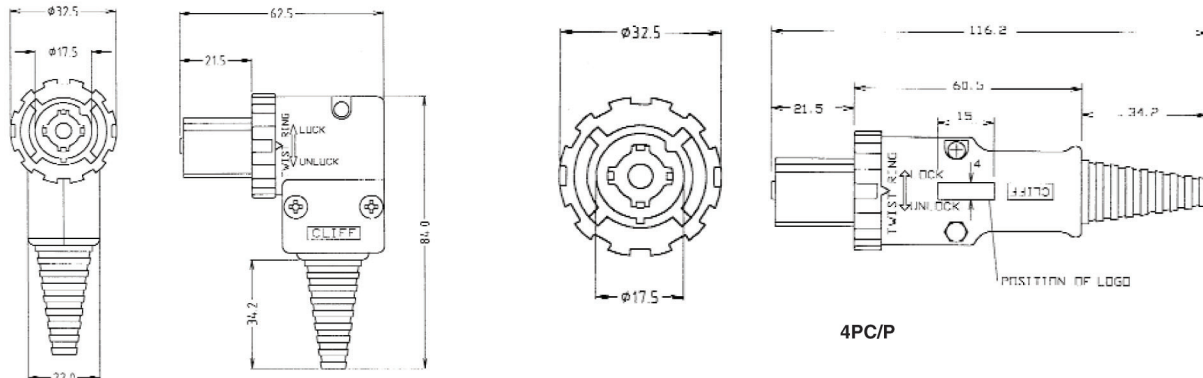
- Safety leading ground pin - makes first, breaks last to prevent damage from arcing if disconnected under load.
- Combination FastOn® quick disconnect and screw / solder connections with clearly marked pin identification inside the line connectors.
- Color coded system - Blue for 120Vac, Red for 250Vac with different mechanical keying to avoid the possibility of intermating.
- Integral Cable Clamp for 6mm to 15mm diameter cable.
- Right Angle PCB Mounting Adapters available. (FCR6929)

**Cliff Electronic Components, Ltd.**  
76 Holmethorpe Avenue, Holmethorpe Ind. Est.  
Redhill, Surrey RH1 2PF. England  
**Tel:** +44 (0) 1737 771375  
**Fax:** +44 (0) 1737 766012  
**Email:** sales@cliffuk.co.uk



Visit us online at:

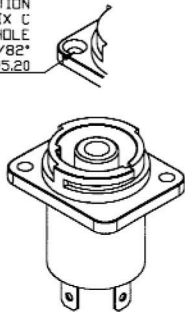
[www.cliffuk.co.uk](http://www.cliffuk.co.uk)



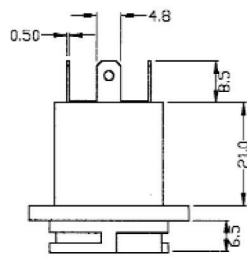
4PC/P90

4PC/P

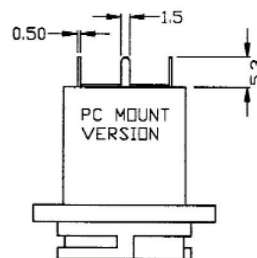
HOLE OPTION  
SUFFIX C  
Ø3.40 HOLE  
C/SK 80/82\*  
TD Ø5.20



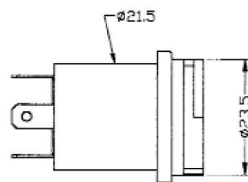
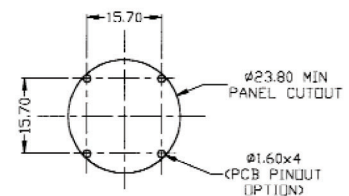
4PC/S



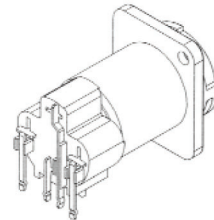
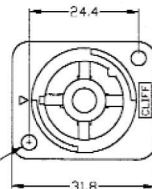
4PC/S/PC



PC LAYOUT  
&  
PANEL CUT OUT



Ø2.40 HOLES  
(SELF TAP)



90° PCB ADAPTOR

### Technical Data:

**Rated Current:** 4 pin 20A. RMS @ 80°C, 30A. RMS @ 20°C. (5% usage)

**Rated Voltage:** Blue (LV) 120V, Red (HV) 250V AC max.\*

**Contact Resistance New:** < 3mΩ.

**Capacitance between Terminals :** <1.5pf.

**Insulation Resistance:** >20MΩ @ 4000V.

**Inrush Current:** >30A. / 20mS.

**Operating Temperature:** -20°C to +80°C

**Recommended Wiring:** 1+, 1- CH A (L) 2+, 2- CH B (R) Pin 1 designated for Earth. (+ Inphase, - Ground).

**Contacts:** Gold plated.

**Max. Wire Size:** 6mm<sup>2</sup> / 10AWG (solid) 4mm<sup>2</sup> / 12AWG (stranded).

\*Connectors identical electrically, only the designation is LV and HV.

## X-ON Electronics

Largest Supplier of Electrical and Electronic Components

*Click to view similar products for [Audio CODECs](#) category:*

*Click to view products by [Cliff](#) manufacturer:*

Other Similar products are found below :

[128](#) [AQGP323](#) [B52N12](#) [XLM331PCSF](#) [XLR413](#) [XLRSDC\(M02\)](#) [TT636](#) [M-XL-3-11L](#) [M-XL-5-11S](#) [XLM332PCVF](#) [XLM332PCSF](#)  
[XLM331PCVF](#) [30-498-3](#) [7151](#) [RSJ-370-NL](#) [SCJ-0253-NL](#) [282](#) [54A](#) [46765-1001-TR250](#) [0472720029](#) [RSJ-0902-NL](#) [HDMI-S-V-](#)  
[DCAN1940C2TR](#) [BJ300-02-Y-A](#) [ASJ-125-3](#) [M55116/2-4](#) [GC283-1](#) [XLR632](#) [M55116/2-3](#) [M55116/3-3](#) [RJ-1004-30R-NL](#) [ASJ-6-5](#) [KLB4](#)  
[1501 03](#) [FCR20673](#) [09454521010](#) [50-00398](#) [150303R](#) [N112BPCSX](#) [XKTO1SCHWARZ](#) [130863-02-E](#) [50-00041](#) [50-00397](#) [50-00399](#)  
[NC3FBH2-D](#) [NC3FDM3-H-0](#) [NC5FBH-D](#) [RSJ362NL](#) [M55116/10-0](#) [54-00035](#) [2001-1-2-21-00-BK](#)