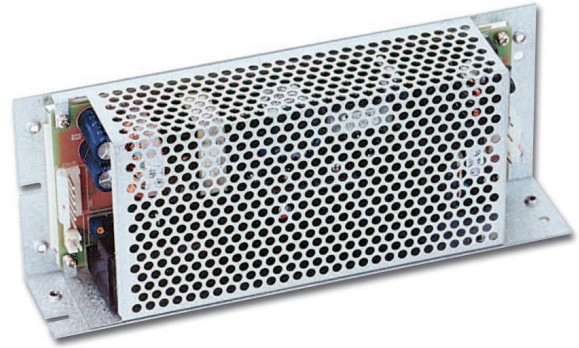


150W to 480W Single Output Power Supplies

Features

- ◆ Universal Input (85 - 265VAC)
- ◆ Power factor Corrected
- ◆ 200% Peak Power capability
- ◆ 2 year warranty
- ◆ Less than 0.5mA earth leakage current
- ◆ Input Transient Protected



Key Market Segments & Applications



| Specifications | | | | |
|--------------------------------|-----------|---|-----------|-------------------------|
| Model | ZWS150PAF | | ZWS240PAF | |
| Input Voltage | - | 85-265VAC (47-63Hz), 120-370VDC | | |
| Input Current (Forced air (1)) | A | 2.8/1.4 | | 4.0/2.0 |
| Inrush Current (1,2) | A | 14 / 28 | | |
| Power Factor | - | 0.99 at 100VAC, 0.95 at 200VAC, Meets EN61000-3-2 | | |
| Leakage Current | mA | 0.5mA Max. Typically 0.1mA (100VAC), 0.22mA (230VAC) | | |
| Temperature Coefficient | - | <0.02%/°C | | |
| Overcurrent Protection (3) | - | >102% of peak current capability | | |
| Overvoltage Protection | V | 24V: 30-35V, 36V: 43.2-50.4, 48V: 55.2-64.8V | | |
| Hold Up Time (Typ) at 100VAC | ms | 20 (16ms at forced air power ratings) | | |
| Efficiency | % | 82 | | |
| Remote On/Off | - | See installation manual (Not available with /A cover option) | | |
| Line Regulation | % | 0.4% | | |
| Load Regulation | % | 0.8% | | |
| Ripple & Noise | % | 1% | | |
| Operating Temperature (4) | °C | (Open frame or L bracket) -10°C to +70°C, derate linearly to 70% load from 60°C to 70°C | | |
| Operating Temperature (4) | °C | (With /A cover option) -10°C to +60°C, derate linearly to 70% load from 50°C to 60°C | | |
| Storage Temperature | °C | -30 to +85°C | | |
| Humidity (non condensing) | - | Operating: 30 - 90% RH, Operating: 10 - 95% RH | | |
| Cooling | - | Convection or Forced Air Cooled (1.5m/s) | | |
| Withstand Voltage | - | Input to Ground 2kVAC (20mA), Input to Output 3kVAC (20mA), Output to Ground 500VAC (100mA) for 1 min. | | |
| Isolation Resistance | - | >100M at 25°C & 70% RH, Output to Ground 500VDC | | |
| Vibration (non operating) | - | 10 - 55Hz (1 minute sweep), 19.6m/s ² constant X, Y, Z 1 hour | | |
| Shock | - | < 196.1 m/s ² | | |
| Safety Agency Approvals | - | UL60950-1, CSA60950-1, EN60950-1, EN50178, CE Mark | | |
| Conducted & Radiated EMI | - | EN55022/EN55022-B, FCC Class B, VCCI-B | | |
| Recommended EMI Filter | - | RSEL-2006W | | |
| Immunity | - | EN61000-4-2, -3, -4, -5, -6, -8, -11 | | |
| Weight (Typ) | g | 500g (800g with cover) | | 750g (1100g with cover) |
| Size (WxHxD) | mm | See Outline Drawings | | |
| Warranty | yrs | Two Years | | |

Notes:

- (1) 100/200VAC
- (2) 25°C ambient (cold start)
- (3) Avoid prolonged operation in overload
- (4) With 0.7m/s airflow. See derating table for convection cooling

X-ON Electronics

Largest Supplier of Electrical and Electronic Components

Click to view similar products for [Switching Power Supplies](#) category:

Click to view products by [TDK-Lambda](#) manufacturer:

Other Similar products are found below :

[70841011](#) [73-551-0005](#) [AAD600S-4-OP](#) [R22095](#) [HWS50A-5/RA](#) [KD0204](#) [9021](#) [S-15F-12](#) [LDIN100150](#) [LPM000-BBAR-01](#) [LPX17S-C](#)
[EVS57-10R6/R](#) [FDC40-24S12](#) [FRV7000G](#) [22929](#) [CQM1IA121](#) [40370121900](#) [VI-PU22-EXX](#) [40370121910](#) [LDIN5075](#) [432703037161](#)
[WRB01X-U](#) [LPX140-C](#) [08-30466-1040G](#) [09-160CFG](#) [70841004](#) [70841025](#) [VPX3000-CBL-DC](#) [LPM000-BBAR-05](#) [LPM000-BBAR-08](#)
[LPM124-OUTA1-48](#) [LPM000-BBAR-07](#) [LPM109-OUTA1-10](#) [LPM616-CHAS](#) [08-30466-1055G](#) [08-30466-2175G](#) [DMB-EWG](#) [TVQF-](#)
[1219-18S](#) [6504-226-2101](#) [CQM1IPS01](#) [XPFM201A+](#) [MAP80-4000G](#) [LFP300F-24-TY](#) [SMP21-L20-DC24V-5A](#) [VI-MUL-ES](#) [08-30466-](#)
[0065G](#) [CME240P-24](#) [VI-RU031-EWWX](#) [08-30466-0028G](#) [S82Y-TS01](#)