



Power Line Filters FD Series

Applications

- Digital equipment
- Mini-computers and peripherals
- Measuring instruments and medical instruments
- Equipment requiring very high impulse attenuation
- Suitable for factory automation equipment
- Industrial equipment such as UPS, inverters and converters
- Communication equipment
- Office automation equipment, such as copy machines, FAX, etc.



Soldering Lug
1,5x2,5 hole

Dimensions in mm

Circuit Diagram FDxxx Series

LINE

LOAD

h = 25 to 35 (according to model), h1 = h + 16

Soldering Lug
1,5x2,5 hole

Dimensions in mm

Circuit Diagram 1FDxx Series

LINE

LOAD

h = 25 to 35 (according to model), h1 = h + 16

Specifications

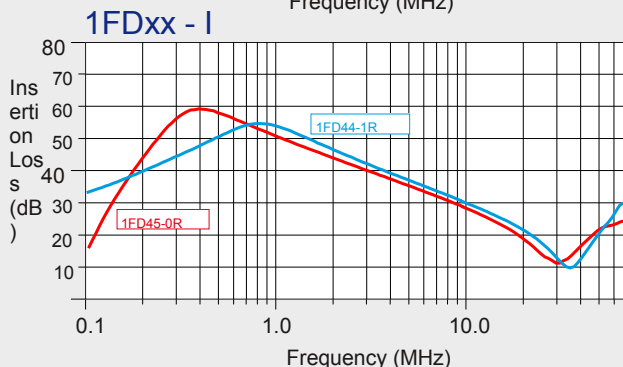
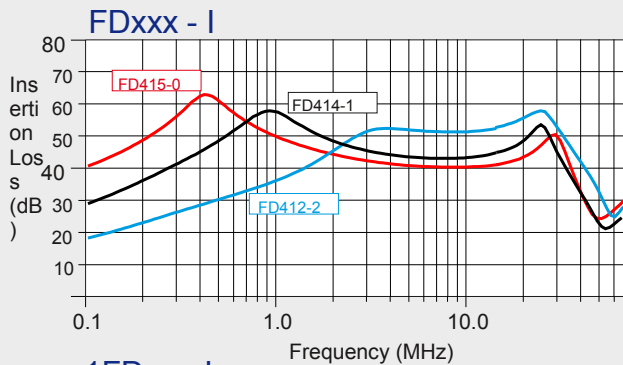
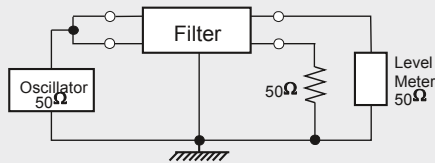
Model	U (V)	I (A)	Cx(nF)	Cy(nF)	L(mH)
FD315-0	250V AC	0,5	47	2,2	
FD415-0			100		
FD314-1	250V AC		47	2,2	
FD414-1			100		
FD312-2	250V AC		47	2,2	
FD412-2			100		
FD311-4	250V AC		47	2,2	0,5
FD411-4			100		

Specifications

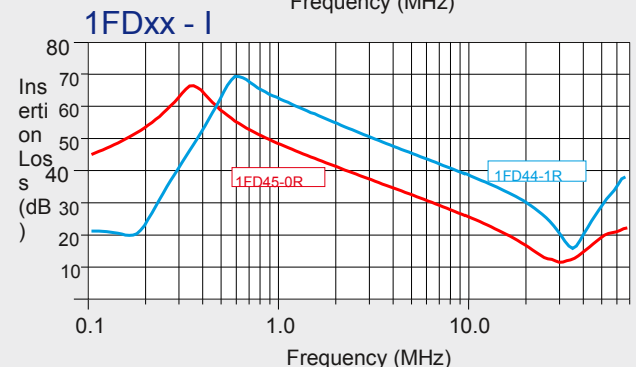
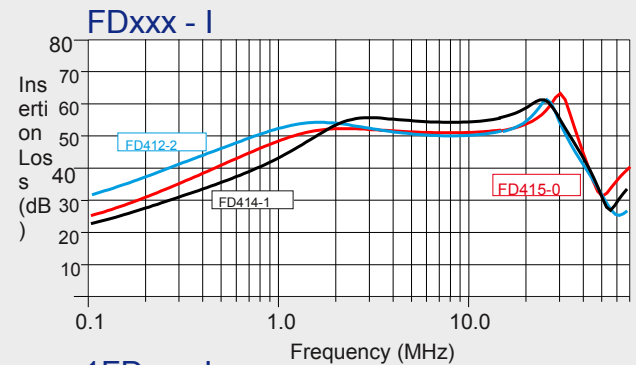
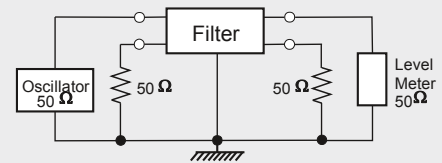
Model	U (V)	I (A)	Cx(nF)	L(mH)
1FD35-0	250V AC	0,5	47	
1FD45-0R			100	
1FD34-1	250V AC		47	
1FD44-1R			100	
1FD32-2	250V AC		47	
1FD42-2R			100	
1FD31-4	250V AC		47	0,5
1FD41-4R			100	

Leakage Current: (250V AC) 0,5 mA max., Operating Temperature: -25 °C to +85 °C, Bleeder Resistor (R = 680k to 1M is available only for Cx > 100nF)

Asymmetrical



Symmetrical



X-ON Electronics

Largest Supplier of Electrical and Electronic Components

Click to view similar products for [Fixed Inductors](#) category:

Click to view products by [Filtercon](#) manufacturer:

Other Similar products are found below :

[MLZ1608M6R8WTD25](#) [MLZ1608N6R8LT000](#) [MLZ1608N3R3LTD25](#) [MLZ1608N3R3LT000](#) [MLZ1608N150LT000](#)

[MLZ1608M150WTD25](#) [MLZ1608M3R3WTD25](#) [MLZ1608M3R3WT000](#) [MLZ1608M150WT000](#) [MLZ1608A1R5WT000](#)

[MLZ1608N1R5LT000](#) [B82432C1333K000](#) [PCMB053T-1R0MS](#) [PCMB053T-1R5MS](#) [PCMB104T-1R5MS](#) [CR32NP-100KC](#) [CR32NP-](#)

[151KC](#) [CR32NP-180KC](#) [CR32NP-181KC](#) [CR32NP-1R5MC](#) [CR32NP-390KC](#) [CR32NP-3R9MC](#) [CR32NP-680KC](#) [CR32NP-820KC](#)

[CR32NP-8R2MC](#) [CR43NP-390KC](#) [CR43NP-560KC](#) [CR43NP-680KC](#) [CR54NP-181KC](#) [CR54NP-470LC](#) [CR54NP-820KC](#) [CR54NP-8R5MC](#)

[MGDQ4-00004-P](#) [MGDU1-00016-P](#) [MHL1ECTTP18NJ](#) [MHL1JCTTD12NJ](#) [PE-51506NL](#) [PE-53601NL](#) [PE-53630NL](#) [PE-53824SNLT](#) [PE-](#)

[62892NL](#) [PE-92100NL](#) [PG0434.801NLT](#) [PG0936.113NLT](#) [PM06-2N7](#) [PM06-39NJ](#) [HC2LP-R47-R](#) [HC2-R47-R](#) [HC3-2R2-R](#) [HC8-1R2-R](#)