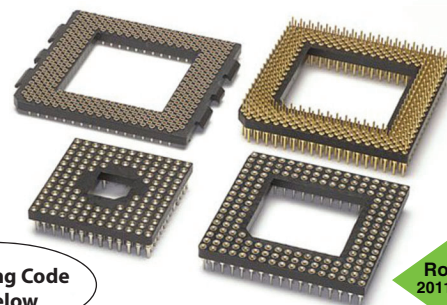


# PIN GRID ARRAY SOCKETS

**SERIES 510,511,513,514,515,518,522,523 • .100" AND INTERSTITIAL GRID • SURFACE MOUNT, THROUGH-HOLE AND WIREWRAP**

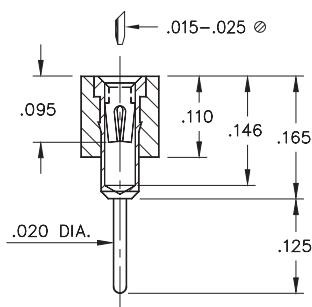
- Series 510, 511, 514, 515, 522 and 523 PGA sockets are available on .100" centers
- Series 513 and 518 PGA sockets are available for Interstitial patterns
- Choice of three low force clips to cover all applications
- High temperature PCT polyester insulator material suitable for all forms of soldering including lead-free
- For Electrical, Mechanical and Environmental Data, see page 137 for details



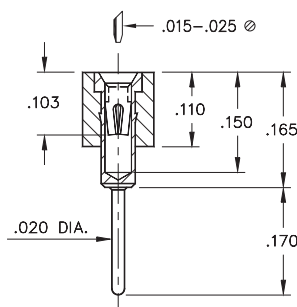
**XX=Plating Code  
See Below**

**RoHS-2  
2011/65/EU**

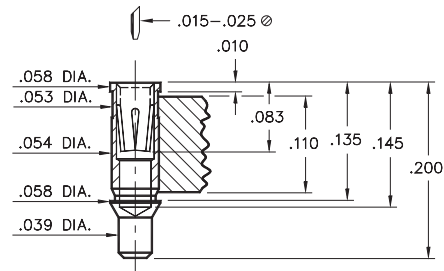
## SERIES 510 (Standard Solder Tail)



## SERIES 511 (Long Solder Tail)

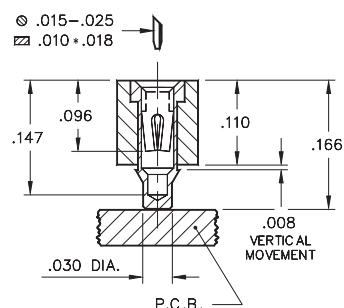


## SERIES 513 (SMT Receptacle)

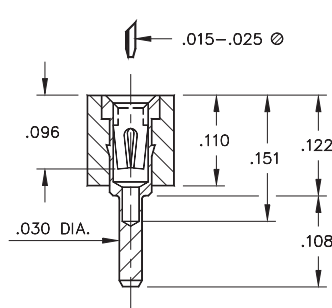


**Interstitial Patterns Only**

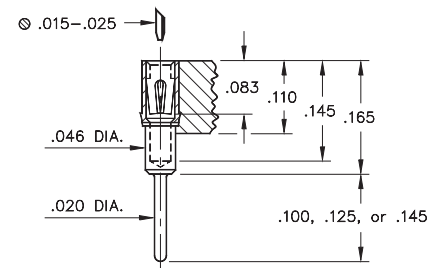
## SERIES 514 (SMT Receptacle)



## SERIES 515 (Low Profile Solder Tail)

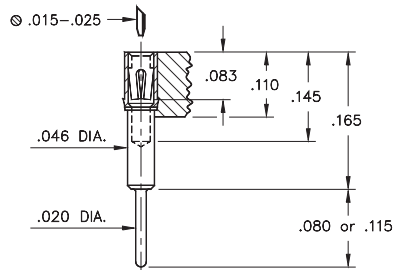


## SERIES 518 (Solder Tail No, Heatsink Tabs)



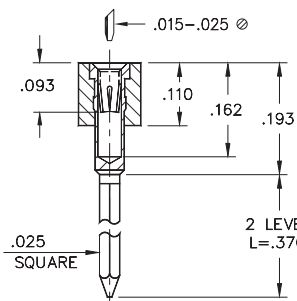
**Interstitial Patterns Only**

## SERIES 518 (Solder Tail w/ Heatsink Tabs)

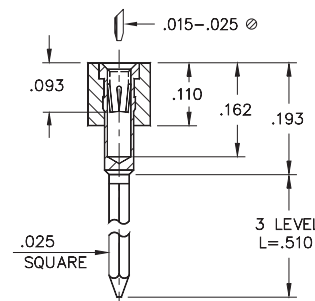


**Interstitial Patterns Only**

## SERIES 522 (2 Level Wrapost)



## SERIES 523 (3 Level Wrapost)



Visit [www.mill-max.com/pgs](http://www.mill-max.com/pgs) to configure a formal part number

### SPECIFY PLATING CODE XX=

Sleeve (Pin)

Contact (Clip)

13 91 93 99 43

10  $\mu$ " Au 200  $\mu$ " Sn/Pb 200  $\mu$ " Sn/Pb 200  $\mu$ " Sn/Pb 200  $\mu$ " Sn

30  $\mu$ " Au 10  $\mu$ " Au 30  $\mu$ " Au 100  $\mu$ " Sn/Pb 30  $\mu$ " Au



Mill-Max Mfg. Corp. • 190 Pine Hollow Road, P.O. Box 300, Oyster Bay, NY 11771 • 516-922-6000 • Fax: 516-922-9253 • [www.mill-max.com](http://www.mill-max.com)

## X-ON Electronics

Largest Supplier of Electrical and Electronic Components

*Click to view similar products for [Sockets & Adapters](#) category:*

*Click to view products by [Mill-Max](#) manufacturer:*

Other Similar products are found below :

[6508-0-00-01-00-00-33-0](#) [AC164341](#) [AC164348](#) [1262](#) [C8051F350-TB](#) [KITPF0100SKTEVBE](#) [LFVDBJR](#) [SK-AX2-CQ256-KITTOP](#)  
[AC164334](#) [AC164353](#) [AC164383](#) [SOCKET-ADM106XTQZ](#) [SPC564A80CAL176](#) [ST5M1267-001](#) [FP3-10PIN-ADAPTER-KIT](#) [CY3675-](#)  
[LCC4A](#) [TDGL015](#) [ATF15XXDK3-SAA100](#) [LFBGADATC](#) [SM64TQ-ACTEL-1](#) [SM68P-ACTEL](#) [8.06.03](#) [AC164358](#) [ATSTK600-RC99](#)  
[76002056](#) [DS91230+](#) [OM13019,598](#) [09185058](#) [AC164369](#) [AC164409](#) [AC164402](#) [SMPA-ISP-ACTEL-3-KIT](#) [ICESABCM81-01](#) [LFVDBGF](#)  
[AC164408](#) [KIT 70601-3](#) [S5U13U00P00C100](#) [AC164352](#) [PN-Q208/5256V](#) [PN-T100/LC4256](#) [LFBGAINTM55U1QA](#) [AC164370](#)  
[AC164355](#) [AC164367](#) [LFDAS12XEFT](#) [CY3675-TSSOP20B](#) [SPC563M64AVB144](#) [ATF15XXDK3-SAA44](#) [AC164410](#)  
[SPC563M64AVB176](#)