

RADIO GATE CONTROLLER ROB-01/12-24V

MANUAL INSTRUCTION



ZAMEL Sp. z o.o.

zameL

ul. Zielona 27, 43-200 Pszczyna, Poland
tel. +48 (32) 210 46 65, fax +48 (32) 210 80 04
www.zamelcet.com, e-mail: marketing@zamel.pl

DESCRIPTION

Radio gate controller ROB-01/12-24V is a universal (any gate manufacturer) operation controller of garage gates and similar electric drives that enables to control their operation by means of EXTA FREE transmitters. It is possible to control few things using one remote control - entry gate, garage gate, room lighting, etc. The device can be connected to a suitable wire terminal used as an external antenna.

FEATURES

- cooperation with wireless EXTA FREE system transmitters,
- operation control of entry gates, garage gates, and other electric drives,
- universal low-voltage power supply (12-24V ~/=),
- 1 remote control can be used for different drives (entry gate, garage) where ROB-01/12-24V device is mounted,
- connection possibility of external wired antenna,
- wide range of operation (up to 250 m),
- possibility of increasing operation range by means of RTN-01 retransmitter.

TECHNICAL DATA

ROB-01/12-24V	
Input (supply) terminals:	A1, A2
Input rated voltage:	12 ÷ 24 V ~/=
Nominal power consumption:	0,2 W
Number of operation modes:	1
Number of channels:	1
Transmission:	radio 868,32 MHz
Coding way:	unidirectional
Coding:	addressing transmission
Maximum number of transmitters:	32
Range:	up to 250 m in the open area
Optic signalling of device operation:	LED red diode
Additional antenna terminals:	ANT
Relay output terminals:	11, 14
Relay parameters:	1NO 2 A / 250 V~ AC3 500 VA (dry contact)
Number of terminal clamps:	5
Section of connecting cables:	up to 2,5 mm ²
Ambient temperature range:	-10 ÷ +55 °C
Operating position:	free
Casing mounting:	installation cable box Ø60 mm
Casing protection degree:	IP20 (EN 60529)
Protection level:	III
Overvoltage category:	II
Pollution degree:	2
Surge voltage:	1 kV (EN 61000-4-5)
Dimensions:	47,5 x 47,5 x 20 mm
Weight:	0,04 kg
Reference standard:	EN 60669, EN 60950, EN 6091000



CAUTION! The device is designed for single-phase installation and must be installed in accordance with standards valid in a particular country. The device should be connected according to the details included in this operating manual. Installation, connection and control should be carried out by a qualified electrician staff, who act in accordance with the service manual and the device functions. In case of casing dismantling an electric shock may occur, and the guarantee is lost then. Before installation make sure the connection cables are not under voltage. The cruciform head screwdriver 3,5 mm should be used to instal the device. Improper transport, storage, and use of the device influence its wrong functioning. It is not advisable to instal the device in the following cases: if any device part is missing or the device is damaged or deformed. In case of improper functioning of the device contact the producer.



The symbol means selective collecting of electrical and electronic equipment. It is forbidden to put the used equipment together with other waste.

APPEARANCE

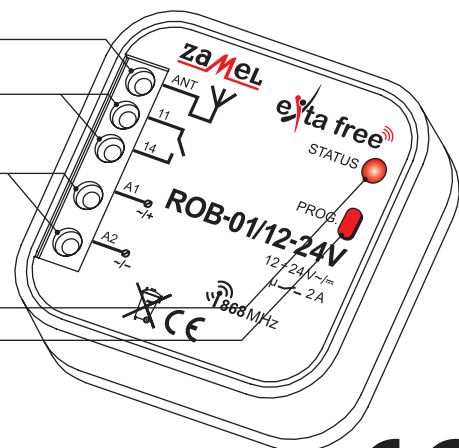
Antenna terminals (ANT)

Relay output terminals (11, 14)

Input (supply) terminals (A1, A2)

Optic signalling of receiver's operation

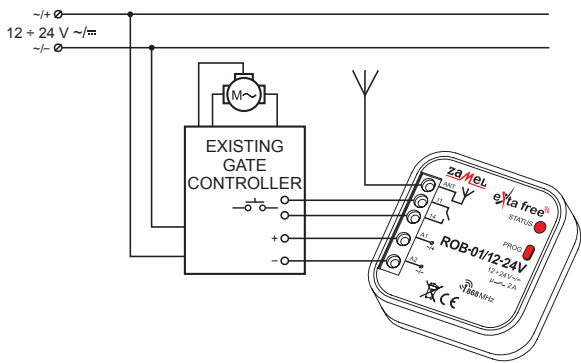
Programming push-button



The ZAMEL company devices which are characterised with this sign can cooperate with each other.



CONNECTION

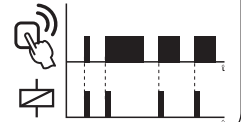


MOUNTING, FUNCTIONING

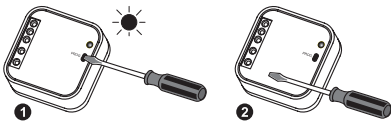
1. Disconnect power supply by the phase fuse, the circuit-breaker or the switch-disconnector combined to the proper circuit.
2. Check if there is no voltage on connection cables by means of a special measure equipment.
3. Connect the cables to ROB-01/12-24V device terminals in accordance with the installing diagram.
4. Switch on the power supply from the mains.

The ROB-01/12-24V device should be mounted in the connection place of manual gate drive release. The receiver operates in impulse mode - after receiving a signal from a programmed transmitter it short circuits relay output terminals (11-14) for about 0,5 seconds.

To improve device operation range it is possible to connect an additional external antenna to ANT terminal. A connecting cable of maximum section 2,5 mm² can be the antenna.



REMOTE CONTROLS PROGRAMMING



Press PROG push-button of ROB-01 device for a longer time till LED red diode switches on (constant signal). Next release PROG push-button.



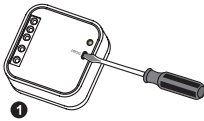
Press the transmitter's push-button for a longer time. LED red diode switches on (first signal pulsates, next the signal is constant).



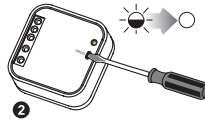
Release the transmitter's push-button. LED red diode switches on (signal pulsates) and then switches off - THE TRANSMITTER IS ADDED.

An exemplary programming procedure with the use of P-257/2 remote controller. The procedure for the rest of radio EXTA FREE transmitters is analogous. **CAUTION: Every transmitter can cooperate with ROB-01 in a different mode, depending on how they were added to the device. One transmitter can be added during one programming cycle. Full memory is signalled with pulsating LED red diode.**

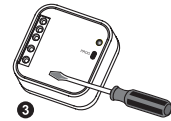
REMOTE CONTROL DELETION



Press PROG push-button of ROB-01 device for a longer time.

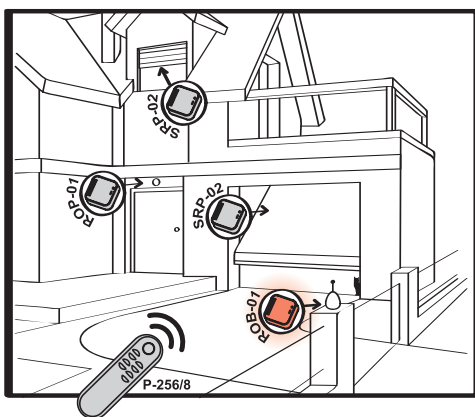


After 5 seconds LED red diode switches on (signal pulsates) and then it switches off.



Release the push-button in ROB-01 - MEMORY IS DELETED.

APPLICATION



ROB-01/12-24V device can be controlled by means of any transmitter of EXTA FREE system. In this application P-256/8 remote control was used which can control external lighting (ROP-01), roller blinds and a garage gate (SRP-02).

COOPERATION AND OPERATING RANGE

Transmitter	ROB-01/12-24V	Transmitter	ROB-01/12-24V
RNK-02	200 m	RNP-02	180 m
RNK-04	200 m	RNL-01	180 m
P-256/8	250 m	RTN-01	200 m
P-257/4 (2)	200 m	RCR-01	180 m
RNM-10	250 m	RTI-01	180 m
RNP-01	180 m	RXM-01	250 m

CAUTION! The given range concerns open area - an ideal condition without any natural or artificial obstacles. If there are some obstacles between a transmitter and a receiver, it is advisable to decrease the range according to: wood and plaster: from 5 to 20 %, bricks: from 10 to 40 %, reinforced concrete: from 40 to 80 %, metal: from 90 to 100%, glass: from 10 to 20 %
Over- and underground medium and high electrical power lines, radio and television transmitters, GSM transmitters set close to a device system have also a negative influence on the range.

WARRANTY CARD

There is 24 months guarantee on the product

1. ZAMEL provides a two-year warranty for its products.
2. The ZAMEL warranty does not cover: a) mechanical defects resulting from transport, loading / unloading or other circumstances b) defects resulting from incorrect installation or operation of ZAMEL products; c) defects resulting from any changes made by CUSTOMERS or third parties, to products sold or equipment necessary for the correct operation of products sold; d) defects resulting from force majeure or other aleatory events for which ZAMEL is not liable; e) power supply (batteries) to be equipped with a device in the moment of sale (if they appear);
3. All complaints in relation to the warranty must be provided by the CUSTOMER in writing to the retailer after discovering a defect.;
4. ZAMEL will review complaints in accordance with existing regulations.;
5. The way a complaint is settled, e.g. replacement of the product, repair or refund, is left to the discretion of ZAMEL.
6. Guarantee does not exclude, does not limit, nor does it suspend the rights of the PURCHASER resulting from the discrepancy between the goods and the contract.

Salesman stamp and signature, date of sale

X-ON Electronics

Largest Supplier of Electrical and Electronic Components

Click to view similar products for [Power Management IC Development Tools](#) category:

Click to view products by [Zamel](#) manufacturer:

Other Similar products are found below :

[EVAL6482H-DISC](#) [EVAL-AD5522EBUZ](#) [EVAL-ADM1060EBZ](#) [EVAL-ADM1073MEBZ](#) [EVAL-ADM1166TQEBZ](#) [EVAL-ADM1168LQEBZ](#) [EVAL-ADM1171EBZ](#) [EVAL-ADM1276EBZ](#) [EVB-EN5319QI](#) [EVB-EN5365QI](#) [EVB-EN6347QI](#) [EVB-EP5348UI](#) [MIC23158YML EV](#) [MIC23451-AAAYFL EV](#) [MIC5281YMME EV](#) [124352-HMC860LP3E](#) [ADM00513](#) [ADM8611-EVALZ](#) [ADM8612-EVALZ](#) [ADM8613-EVALZ](#) [ADM8615-EVALZ](#) [ADP1046ADC1-EVALZ](#) [ADP1055-EVALZ](#) [ADP122-3.3-EVALZ](#) [ADP130-0.8-EVALZ](#) [ADP130-1.2-EVALZ](#) [ADP130-1.5-EVALZ](#) [ADP130-1.8-EVALZ](#) [ADP160UJZ-REDYKIT](#) [ADP166UJ-EVALZ](#) [ADP1712-3.3-EVALZ](#) [ADP1714-3.3-EVALZ](#) [ADP1715-3.3-EVALZ](#) [ADP1716-2.5-EVALZ](#) [ADP1740-1.5-EVALZ](#) [ADP1752-1.5-EVALZ](#) [ADP1754-1.5-EVALZ](#) [ADP1828LC-EVALZ](#) [ADP1870-0.3-EVALZ](#) [ADP1871-0.6-EVALZ](#) [ADP1873-0.6-EVALZ](#) [ADP1874-0.3-EVALZ](#) [ADP1876-EVALZ](#) [ADP1879-1.0-EVALZ](#) [ADP1882-1.0-EVALZ](#) [ADP1883-0.6-EVALZ](#) [ADP197CB-EVALZ](#) [ADP199CB-EVALZ](#) [ADP2102-1.25-EVALZ](#) [ADP2102-1.2-EVALZ](#)