



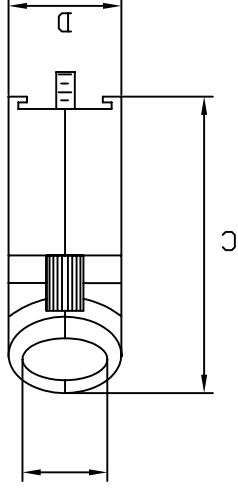
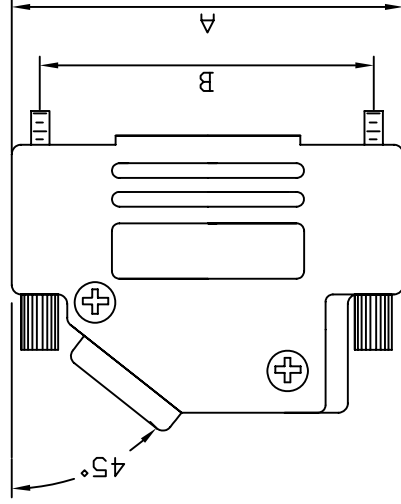
THIS SERIES FULLY CONFORMS TO THE EUROPEAN UNION DIRECTIVES 2002/95/EC AND 2002/96/EC FOR ROHS COMPLIANCY.



MH CONNECTORS LTD.

DRAWING No		MHD45ZK SERIES	
SCALE	SHEET OF	1	OF 1
REV:		5	
DATE	APPROVED	DATE	
06-07-13	Johnny		
THESE DRAWINGS AND SPECIFICATIONS ARE THE PROPERTY OF MH CONNECTORS LTD. AND SHALL NOT BE REPRODUCED, COPIED OR USED AS THE BASIS FOR THE MANUFACTURE OR SALE OF APPARATUS WITHOUT WRITTEN PERMISSION.			

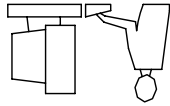
MATERIAL: DIE CAST ZINC ALLOY
 NICKEL PLATED 2um min
 4-40 THUMBSCREWS:STEEL-Zn PLATED
 HOOD SCREWS:STEEL-Zn PLATED
 COMPRESSION INSERTS:ABS UL RECOGNIZED
 OPERATING TEMP:-40°C TO+120°C



E MAX. CABLE Ø

NOTE: 9 POSITION HAS ONLY 1 THUMBSCREW (OPPOSITE CABLE ENTRY)

BACKSHELL KIT INCLUDES:
 (2) BACKSHELL HALVES
 (2) 4-40 THUMBSCREWS
 (2) HOUSING SCREWS
 (1) SET OF COMPRESSION INSERTS-(9 POSITION~37 POSITION)
 DIAMETERS:4mm(.157"),5mm(.197"),7mm(.276"),9mm(.351")
 (1) SET OF COMPRESSION INSERTS-(50 POSITION)
 DIAMETERS:11mm(.433"),12.5mm(.492"),14mm(.551"),15mm(.591")



THIS IS A CAD. GENERATED DRAWING
 DO NOT MAKE MANUAL REVISIONS TO MASTER.

SIZE	P/N - BULK	PRODUCT CODE
50-WAY	6561-0106-15	MHD45ZK-50
37-WAY	6561-0106-14	MHD45ZK-37
25-WAY	6561-0106-13	MHD45ZK-25
15-WAY	6561-0106-12	MHD45ZK-15
9-WAY	6561-0106-11	MHD45ZK-09

SIZE	P/N - KITTED	PRODUCT CODE
50-WAY	6560-0106-15	MHD45ZK-50-K
37-WAY	6560-0106-14	MHD45ZK-37-K
25-WAY	6560-0106-13	MHD45ZK-25-K
15-WAY	6560-0106-12	MHD45ZK-15-K
9-WAY	6560-0106-11	MHD45ZK-09-K

ORDERING INFORMATION:

SIZE	DIMENSIONS(mm/in)				
	A ±1.0 (±.04)	B ±0.25 (±.01)	C ±1.5 (±.06)	D ±0.5 (±.02)	E
50	67.4	61.11	44.9	17.4	17.0
37	69.7	63.50	40.3	14.5	13.0
25	53.2	47.04	40.3	14.5	13.0
15	39.5	33.32	40.3	14.5	13.0
9	31.0	24.99	36.3	14.5	13.0
	2.65	2.406	1.77	0.69	0.67

* UNLESS OTHERWISE SPECIFIED TOLERANCES ON DECIMAL IS:

X-ON Electronics

Largest Supplier of Electrical and Electronic Components

Click to view similar products for [D-Sub Standard Connectors](#) category:

Click to view products by [MH Connectors](#) manufacturer:

Other Similar products are found below :

[DCM37S732N](#) [DAM15P500](#) [DEV09S364GTLF](#) [DEM09P032N](#) [DDM50P732N](#) [DAM15S332N](#) [173109-2218](#) [173109-2466](#) [173109-2436](#)
[173109-2435](#) [56F706-005-LI](#) [56F711-015](#) [015-0341-000](#) [015-0372-008](#) [015-8544-011](#) [017041-0005](#) [020419-0104](#) [012-0515-000](#) [012-9507-](#)
[034](#) [012-9507-114](#) [012-9534-001](#) [020745-0008](#) [609-25P](#) [M24308/2-23Z](#) [M243082310F](#) [M243082410F](#) [M243082411F](#) [M24308/4-21](#)
[CT1A18-11PSA206](#) [CT1N36-5SC](#) [CT2-16S-17PS](#) [CT2-20-15PCAU](#) [CT2-24-12PS](#) [CT2-24-28PSF127A206](#) [CT2-32-9PC](#) [CT6F9767-14-4-](#)
[14S-5PC](#) [CT6FA10SL-4PS](#) [CT7-18-10SC](#) [CT7-18-10SCAU](#) [CT7-18-12SCAU](#) [CT7-18-1PC](#) [CT7-18-1PCAU](#) [CT7-18-21SCAU](#) [M83513/01-](#)
[FC](#) [M83723/76W24619 L/C](#) [M85049/48-3-2F](#) [69001-865](#) [6STD09PCM99B70X](#) [6STD09SCM99B30X](#) [6STD09SCT99S40X](#)