



THIS SERIES FULLY CONFORMS TO THE  
EUROPEAN UNION DIRECTIVES 2002/95/EC  
AND 2002/96/EC FOR ROHS COMPLIANCY.



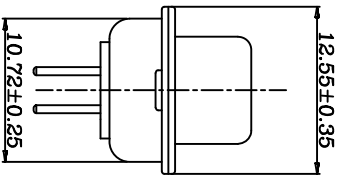
# MH CONNECTORS LTD.

DRAWING No MHDDXX-M-T-B-S	
SCALE	SHEET OF 1
REV: 2.0	DATE 08-07-13
APPROVED	DATE
Haley	DATE
DRAWN	

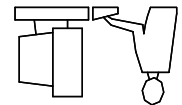
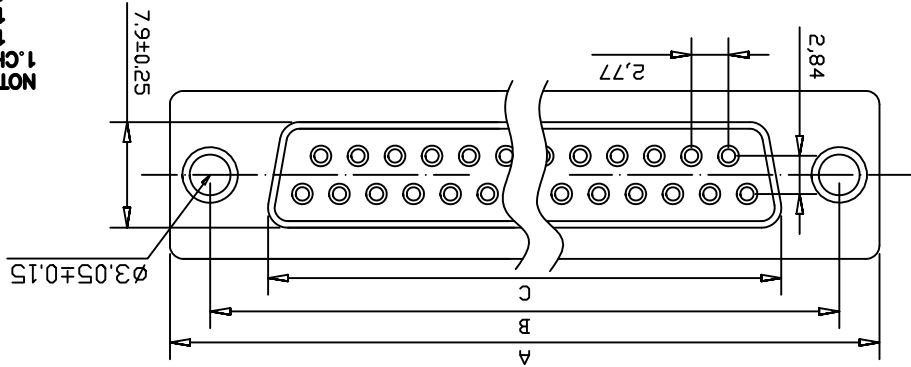
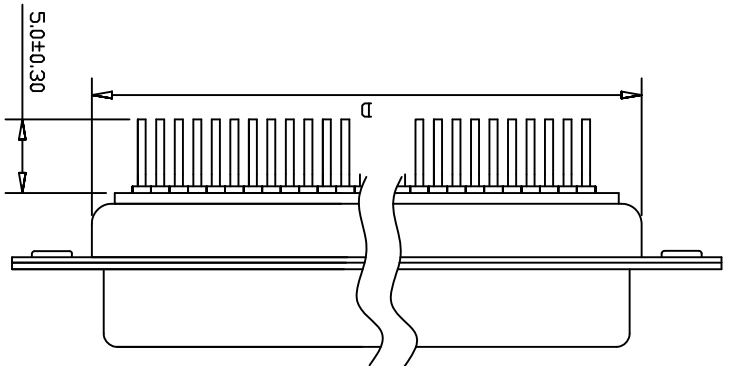
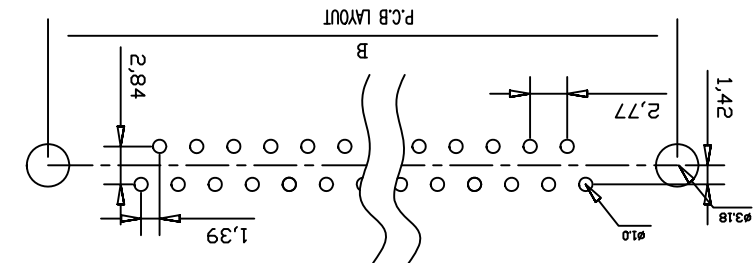
THESE DRAWINGS AND SPECIFICATIONS ARE THE  
PROPERTY OF MH CONNECTORS LTD. AND SHALL NOT  
BE REPRODUCED, COPIED OR USED AS THE BASIS FOR  
THE MANUFACTURE OR SALE OF APPARATUS WITHOUT  
WRITTEN PERMISSION.

Ordering Info	Part Number	SIZE	Dimensions(mm)			
MHDD09-M-T-B-S	9	A±0.25	B±0.25	C±0.25	D±0.25	
MHDD15-M-T-B-S	15	30.81	24.99	16.33	19.28	
MHDD25-M-T-B-S	25	53.03	47.04	38.38	41.25	
MHDD37-M-T-B-S	37	69.40	63.50	54.85	57.40	

- 1. CHARACTERISTICS:**
- 1.1. RATED VOLTAGE: 250V.
  - 1.2. RATED CURRENT: 3AMP.
  - 1.3. CONTACT RESISTANCE: 35mohms MAX. INITIAL. 50mohms MAX. AFTER.
  - 1.4. INSULATION RESISTANCE: 1000mohms MIN. at 500V DC.
  - 1.5. DIELECTRIC STRENGTH: 500VRMS.
  - 1.6. OPERATING TEMPERATURE RANGE: -55°C~85°C.
  - 1.7. INSERTION/EXTRACTION FORCE PER CONTACT: 340g Max./21g Min.
- 2. MATERIAL:**
- 2.1. INSULATORS: PBT+30% G.F.(UL94V-0) BLACK.
  - 2.2. CONTACTS: BRASS C2800R-H,(G/F) TOP OVER CONTACT AREA, 100u" MIN MATTE-TIN TOP OVER SOLDER AREA, 50u" MIN NICKEL UNDER PLATE.
  - 2.3. FRONT SHELL: SPC, 100u" MIN BRIGHT TIN TOP OVER, 50u" MIN COPPER UNDER PLATE.
  - 2.4. BACK SHELL: SPC, 100u" MIN BRIGHT TIN TOP OVER, 50u" MIN COPPER UNDER PLATE.



\* UNLESS OTHERWISE SPECIFIED TOLERANCES  
ON DECIMAL IS: X.X ±0.35  
X.XX ±0.25  
X.XXX ±0.15  
X. ±1  
X.X ±0.05



THIS IS A CAD GENERATED DRAWING  
DO NOT MAKE MANUAL REVISIONS TO MASTER.

## X-ON Electronics

Largest Supplier of Electrical and Electronic Components

*Click to view similar products for [D-Sub Standard Connectors](#) category:*

*Click to view products by [MH Connectors](#) manufacturer:*

Other Similar products are found below :

[DCM37S732N](#) [DAM15P500](#) [DEV09S364GTLF](#) [DEM09P032N](#) [DDM50P732N](#) [DAM15S332N](#) [173109-2218](#) [173109-2466](#) [173109-2436](#)  
[173109-2435](#) [56F706-005-LI](#) [56F711-015](#) [015-0341-000](#) [015-0372-008](#) [015-8544-011](#) [017041-0005](#) [020419-0104](#) [012-0515-000](#) [012-9507-](#)  
[034](#) [012-9507-114](#) [012-9534-001](#) [020745-0008](#) [609-25P](#) [M24308/2-23Z](#) [M243082310F](#) [M243082410F](#) [M243082411F](#) [M24308/4-21](#)  
[CT1A18-11PSA206](#) [CT1N36-5SC](#) [CT2-16S-17PS](#) [CT2-20-15PCAU](#) [CT2-24-12PS](#) [CT2-24-28PSF127A206](#) [CT2-32-9PC](#) [CT6F9767-14-4-](#)  
[14S-5PC](#) [CT6FA10SL-4PS](#) [CT7-18-10SC](#) [CT7-18-10SCAU](#) [CT7-18-12SCAU](#) [CT7-18-1PC](#) [CT7-18-1PCAU](#) [CT7-18-21SCAU](#) [M83513/01-](#)  
[FC](#) [M83723/76W24619 L/C](#) [M85049/48-3-2F](#) [69001-865](#) [6STD09PCM99B70X](#) [6STD09SCM99B30X](#) [6STD09SCT99S40X](#)