



THIS SERIES FULLY CONFORMS TO THE EUROPEAN UNION DIRECTIVES 2002/95/EC AND 2002/96/EC FOR ROHS COMPLIANCY.



MH CONNECTORS, DIVISION OF EDAC

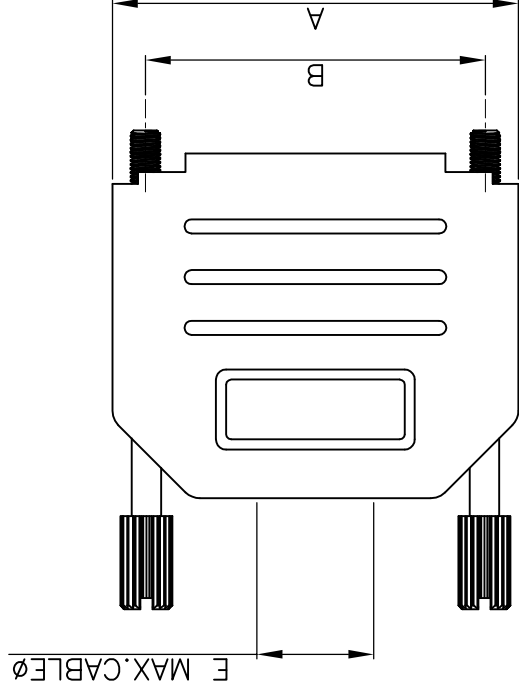
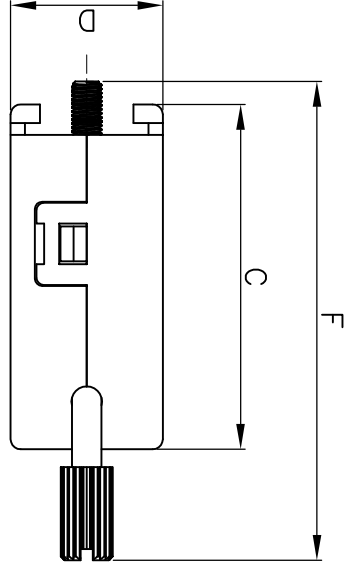
DRAWING NO MHDPPK15-SLIM SERIES		SCALE NTS		SHEET OF 1 OF 1		REV: 1.0	
DATE 06-24-15		DRAWN HALEY		APPROVED		DATE	

THESE DRAWINGS AND SPECIFICATIONS ARE THE PROPERTY OF MH CONNECTORS AND SHALL NOT BE REPRODUCED, COPIED OR USED AS THE BASIS FOR THE MANUFACTURE OR SALE OF APPARATUS WITHOUT WRITTEN PERMISSION.

OPERATING TEMP: -55°C TO +110°C.

MATERIAL: POLYAMIDE PA66-UL RECOGNIZED MATERIAL
SEE COLOR CODE CHART.
THUMBSCREWS: STEEL,BLACK OXIDE(FOR BLACK HOODS)
STEEL,Zn PLATED(FOR COLORED HOODS)

COLOR CODE CHART:
BLACK = BK
LIGHT GREY = LG
DEC GREY = DE
RED = R
BLUE = B
YELLOW = Y
GREEN = G
WHITE = W

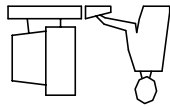


ORDERING INFORMATION: (YY=COLOR)

SIZE	P/N-KITTED:	MHDPPK15-YY-K
15-WAY	P/N-BULK:	MHDPPK15-YY

DIMENSIONS(mm/IN)		15	
SIZE	A ± 0.32	33.32	40.00
	B ± 0.12	34.00	33.32
	C ± 0.5	15.00	34.00
	D ± 0.2	0.591	15.00
	E	0.453	11.50
	F ± 0.5		47.20
			1.858

BACKSHELL KIT INCLUDES:
(1) BACKSHELL
(2) 4-40 THUMBSCREWS
(1) PLASTIC STRAIN RELIEF
(1) METAL STRAIN RELIEF CLAMP
(2) STRAIN RELIEF SCREWS
TORQUE VALUE ON PLASTIC FOR STRAIN RELIEF SCREWS=4 INCH POUNDS MAX



THIS IS A CAD GENERATED DRAWING
DO NOT MAKE MANUAL REVISIONS TO MASTER.

* UNLESS OTHERWISE SPECIFIED TOLERANCES
ON DECIMAL IS:

X-ON Electronics

Largest Supplier of Electrical and Electronic Components

Click to view similar products for [D-Sub Standard Connectors](#) category:

Click to view products by [MH Connectors](#) manufacturer:

Other Similar products are found below :

[DCM37S732N](#) [DAM15P500](#) [DEV09S364GTLF](#) [DEM09P032N](#) [DDM50P732N](#) [DAM15S332N](#) [173109-2218](#) [173109-2466](#) [173109-2436](#)
[173109-2435](#) [56F706-005-LI](#) [56F711-015](#) [015-0341-000](#) [015-0372-008](#) [015-8544-011](#) [017041-0005](#) [020419-0104](#) [012-0515-000](#) [012-9507-](#)
[034](#) [012-9507-114](#) [012-9534-001](#) [020745-0008](#) [609-25P](#) [M24308/2-23Z](#) [M243082310F](#) [M243082410F](#) [M243082411F](#) [M24308/4-21](#)
[CT1A18-11PSA206](#) [CT1N36-5SC](#) [CT2-16S-17PS](#) [CT2-20-15PCAU](#) [CT2-24-12PS](#) [CT2-24-28PSF127A206](#) [CT2-32-9PC](#) [CT6F9767-14-4-](#)
[14S-5PC](#) [CT6FA10SL-4PS](#) [CT7-18-10SC](#) [CT7-18-10SCAU](#) [CT7-18-12SCAU](#) [CT7-18-1PC](#) [CT7-18-1PCAU](#) [CT7-18-21SCAU](#) [M83513/01-](#)
[FC](#) [M83723/76W24619 L/C](#) [M85049/48-3-2F](#) [69001-865](#) [6STD09PCM99B70X](#) [6STD09SCM99B30X](#) [6STD09SCT99S40X](#)