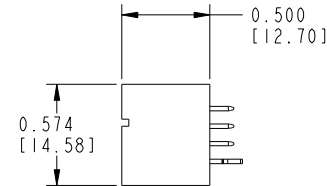
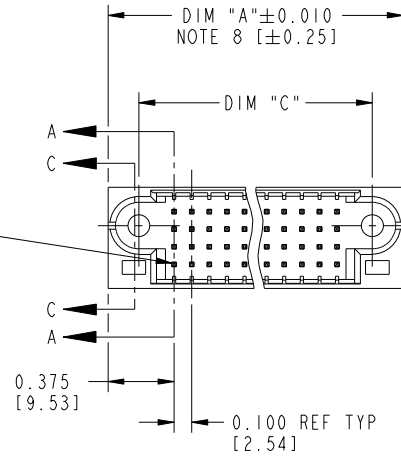
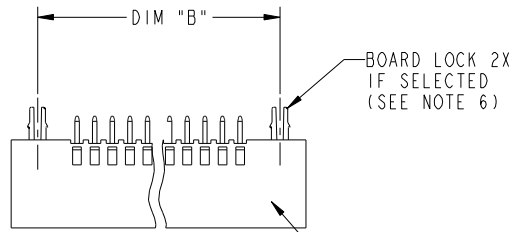


Tous droits strictement reserves. Reproduction ou communication a des tiers interdite sous quelque forme que ce soit sans autorisation ecrite du propriétaire. Propriete de c FCI. Droits de reproduction FCI.



All rights strictly reserved. Reproduction or issue to third parties in any form whatever is not permitted without written authority from the proprietor. Property of FCI. Copyright FCI.

PRODUCT NUMBER  
51965-A00CCC00EF--  
NOTE 1



mat'l code				NOTE 2	tolerances unless otherwise specified		CUSTOMER	www.fciconnect.com	
ltr	ecn no.	dr	date	linear	.XX±.01/0.X±0.3	COPY		title	
A	V04-0387	TAB	04/16/04		.XXX±.005/0.XX±0.13	projection		VERTICAL HEADER w/ GUIDE PIN SIGNAL	
B	DG05-0563	RYAN	12/30/05	angles	.XXX±.0020/.XXX±.051		product family	PWRBLADE	code
C	DG10-0262	Anson	07/15/10	dr	0°±2°	scale	size	A	213
				enr	T. BRUNGARD 04/16/04	1:1	dwg no	51965	sheet
				chr	M. GRAY 04/16/04				1 of 3
				appd	M. GRAY 04/16/04				
sheet index	revision sheet	C	C	C					
		1	2	3					

cage code 22526

Pro/E

Tous droits strictement reserves. Reproduction ou communication a des tiers interdite sous quelque forme que ce soit sans autorisation écrite du propriétaire. Propriete de c FCI. Droits de reproduction FCI.

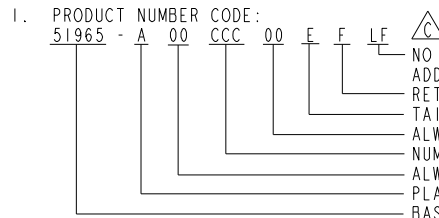


All rights strictly reserved. Reproduction or issue to third parties in any form whatever is not permitted without written authority from the proprietor. Property of FCI. Copyright FCI.

PRODUCT NUMBER
51965-A00CCC00EF -- NOTE 1

DIM	LENGTH FORMULAS (SEE NOTE 8)
DIM "A"	.100 [2.54] x (CCC/4) + .650 [16.51] (NOTE 8)
DIM "B"	.100 [2.54] x (CCC/4) + .350 [8.89]
DIM "C"	.100 [2.54] x (CCC/4) + .300 [7.62]
DIM "D"	.100 [2.54] x (CCC/4) + .680 [17.27]

CONNECTOR NOTES



NO THIS SUFFIX: 100U"/2.54um SnPb ON PCB INTERFACE  
 ADD THIS SUFFIX: 78u"/2.00um Sn ON PCB INTERFACE  
 RETENTION TO PCB (NOTE 6)  
 TAIL OPTIONS (NOTE 5)  
 ALWAYS "00"  
 NUMBER OF SIGNAL CONTACTS (NOTE 4)  
 ALWAYS "00"  
 PLATING (NOTE 3)  
 BASE NUMBER

2. HOUSING MATERIAL: UL 94 V-0 GLASS FILLED HIGH TEMP THERMOPLASTIC  
 SIGNAL CONTACT MATERIAL: COPPER ALLOY

3. PLATING:   
 1-SEE PRINT 10064183 FOR PLATING SPEC OF 51965-100CCC00EF AND 51965-100CCC00EFLF RESPECTIVELY

4. SIGNAL CONTACT, 004 TO 148 AVAILABLE.

5. TAIL OPTIONS:  
 A = 0.135 +0.015/-0.010 [3.43 +0.38/-0.25] SOLDER TO BOARD  
 B = 0.165 +0.015/-0.010 [4.19 +0.38/-0.25] SOLDER TO BOARD  
 C = 0.165 +0.015/-0.010 [4.19 +0.38/-0.25] PRESS FIT

6. RETENTION TO PCB OPTIONS:  
 A = BOARD LOCK (REQUIRES 0.098 +0.002/-0.001 [2.49 +0.05/-0.03] THUR HOLE IN PCB). RECOMMENDED ON SYMMETRIC CONNECTORS. BOARD LOCK TO BE USED IN CONJUNCTION WITH A .092 PCB OR THICKER.  
 C = NO RETENTION FEATURE.

7. MANUFACTURE'S NAME, P/N, AND DATE CODE TO APPEAR ON THIS SURFACE.

8. THE MAXIMUM OVERALL LENGTH (DIM A) OF A PART IS 8.00 [203.2].

9. PRODUCT SPECIFICATION GS-12-149.

10. DIMENSIONS AND TOLERANCES ARE IN ACCORDANCE WITH) ASME Y14.5m, 1994 UNLESS OTHERWISE SPECIFIED.

PCB NOTES:

11. ALL DIMENSIONS ARE BASIC UNLESS OTHERWISE SPECIFIED.

12. ALL THROUGH HOLES ARE LOCATED WITH A TRUE POSITION OF 0.004 [0.10]

13. ALL HOLE DIAMETERS ARE FINISHED HOLE SIZE

14. Ø0.098 [2.49] THROUGH HOLES ARE UNPLATED.

15. Ø0.0453±0.0010 [1.151±0.025] DRILLED HOLES PLATED WITH 0.0003 [0.008] MIN SnPb OVER 0.001 [0.03] TO 0.003 [0.08] Cu PLATING TO ACHIEVE A Ø0.040±0.003 [1.02±0.07] HOLE.

16. FOR PRESSFIT APPLICATION USE FCI CAM TOOL 430169-XXX.

mat'l code		NOTE 2		tolerances unless otherwise specified		CUSTOMER			
ltr	ecr no.	dr	date	linear	.XX±.01/0.X±0.3	COPY		www.fciconnect.com	
C				projection	.XXX±.005/0.XX±0.13	projection		title VERTICAL HEADER w/ GUIDE PIN SIGNAL	
				angles	.XXX±.0020/.XXX±.051			product family PWRBLADE code 213	
				dr	0°±2°	INCH/MM		size dwg no 51965 sheet 2 OF 3	
				enr	T. BRUNGARD 04/16/04	scale 1:1		cage code 22526	
				chr	M. GRAY 04/16/04				
				appd	M. GRAY 04/16/04				
sheet index	revision sheet								

1 | 2

Pro/E

3 |

cage code 22526

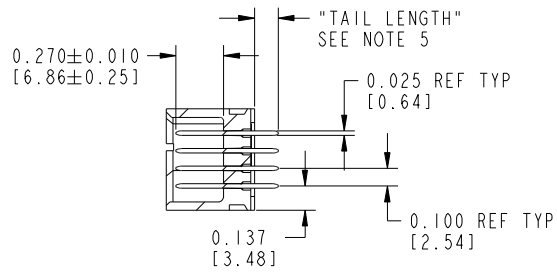
4

Tous droits strictement réservés. Reproduction ou communication à des tiers interdite sous quelque forme que ce soit sans autorisation écrite du propriétaire. Propriété de c.FCI. Droits de reproduction FCI.

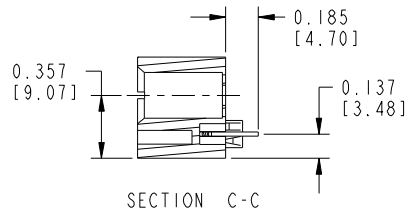


All rights strictly reserved. Reproduction or issue to third parties in any form whatever is not permitted without written authority from the proprietor. Property of FCI. Copyright FCI.

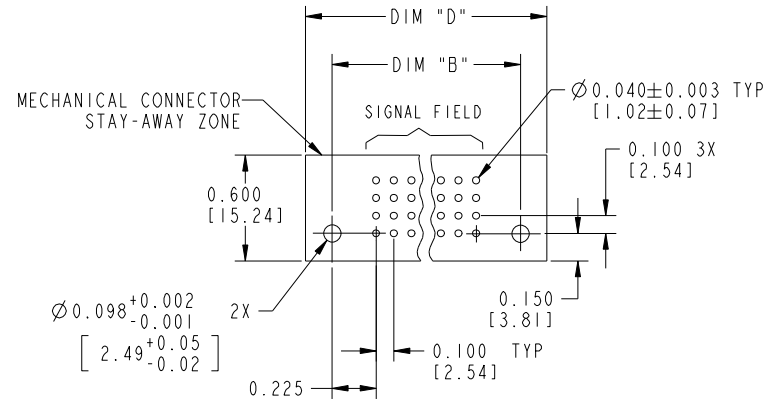
PRODUCT NUMBER  
51965-A00CCC00EF--  
NOTE 1



SECTION A-A



SECTION C-C



RECOMMENDED PCB LAYOUT

mal't code		NOTE 2		tolerances unless otherwise specified		CUSTOMER		 www.fciconnect.com	
ltr	ecn no.	dr	date	linear	.XX±.01/0.X±0.3	COPY		title	
C				angles	.XXX±.005/0.XX±0.13	projection		VERTICAL HEADER w/ GUIDE PIN SIGNAL	
				dr	.XXX±.0020/.XXX±.051	 INCH/MM		product family	
				enr	0°±2°	scale		PWRBLADE	
				chr	T. BRUNGARD 04/16/04	1:1		code	
				appd	M. GRAY 04/16/04	A		size	
sheet index		revision sheet		M. GRAY 04/16/04		51965		213	
						3 OF 3			

cage code 22526

Pro/E

## X-ON Electronics

Largest Supplier of Electrical and Electronic Components

*Click to view similar products for [Power to the Board](#) category:*

*Click to view products by [Amphenol](#) manufacturer:*

Other Similar products are found below :

[10131318-08512GRLF](#) [6450171-4](#) [6450552-7](#) [6600323-8](#) [6643429-1](#) [6646040-2](#) [6651939-1](#) [6766604-1](#) [120959-1](#) [1393557-2](#) [1393532-2](#)  
[1393532-3](#) [1393532-4](#) [1393557-1](#) [1600812-5](#) [1-6450861-2](#) [1645595-1](#) [1743490-1](#) [1744132-7](#) [1761122-1](#) [1766169-1](#) [1766250-1](#) [18362](#)  
[1892109-1](#) [1-967627-6](#) [2226808-1](#) [2-6450860-5](#) [2-6450860-6](#) [2-6450870-0](#) [93003-0502](#) [953552-1](#) [1-6450161-4](#) [1-6450850-6](#) [1645526-2](#) [1-](#)  
[6600130-0](#) [1743419-1](#) [1766150-1](#) [2005243-2](#) [211110-1](#) [2-6600130-2](#) [TE34-12-16P-F0](#) [51700-10201602AALF](#) [5-6450830-6](#) [5646956-4](#)  
[36662-0005](#) [40585-3000](#) [4-6450830-9](#) [4-6600333-3](#) [51142-0214](#) [10125416-4050LF](#)