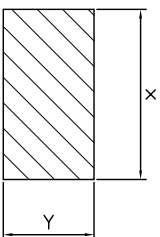
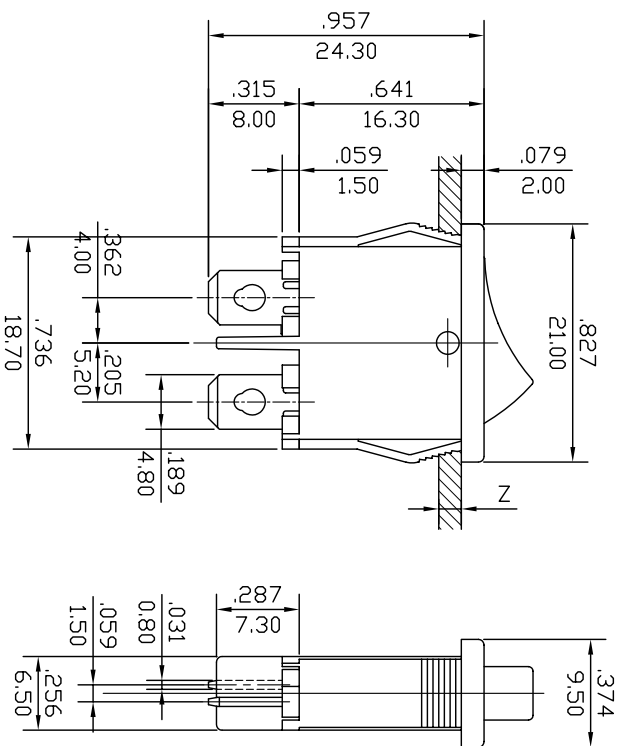


ROCKER SWITCH MODEL MR SERIES

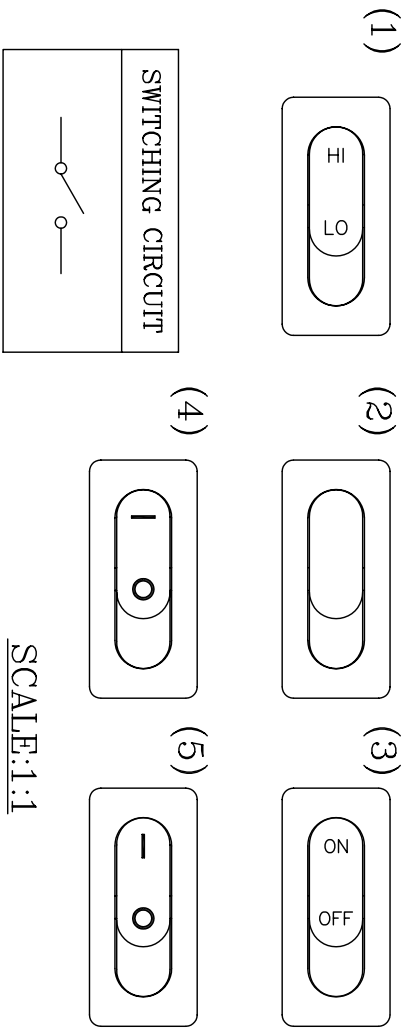
RATING: 12A 125VAC, 10A 250VAC 1/4HP (CSA)
 10A 125VAC, 8A 250VAC 1/4HP (UL)
 10(4)A 250V~T125/55 (VDE, SEMKO, DEMKO, NEMKO, FIMKO, SEV)

DIELECTRIC WITHSTAND VOLTAGE: 1000VAC 1 MINUTE
 INSULATION RESISTANCE: 100MΩ (MIN.)
 CONTACT RESISTANCE: 20mΩ (MAX.)

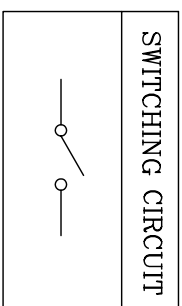


PANEL CUTOUT DIMENSION TABLE

X(CUTOUT DIMENSION)	Y(CUTOUT DIMENSION)	Z(PANEL THICKNESS)
19.2 ⁺⁰ _{-0.15}	6.65~6.75mm	0.75~1.25mm
19.4 ⁺⁰ _{-0.15}	6.65~6.75mm	1.25~2mm
19.8 ⁺⁰ _{-0.15}	6.65~6.75mm	2~3mm



SCALE: 1:1



MODEL NO, SEE NUMBER SYSTEM

REVISION	DESCRIPTION	APPROVAL BY	TOLERANCES: X±0.3	ANGLE: 1/2°	UNIT: mm	PART NAME	DWG NO
△						SMALL MINI-SIZED ROCKER SWITCH	S00005A
△							
△							
△							
△							

DESIGNED BY	ERIC	SCALE	DATE	PART NO	MR-H10-C*N-**-0**
DRAWN BY	吳美玉	3/2	2003.12.04		
CHECKED BY					
APPROVED BY					

X-ON Electronics

Largest Supplier of Electrical and Electronic Components

Click to view similar products for [Rocker Switches](#) category:

Click to view products by [Canal manufacturer](#):

Other Similar products are found below :

[VKD2GHNB-00000-000](#) [VSD2GNNB-00000-000](#) [6-1571986-5](#) [6-1571986-9](#) [632422-4B-KD](#) [7036WWCDBX653+U622](#) [8055K52Z7V](#)
[8138K20E6M50](#) [FMC18A2200002](#) [84206L](#) [84312LX](#) [PREDD4-07F-BB0FW](#) [PREDD5-07F-BB0GW](#) [PRFDD1-16F-BB000](#) [PRFDD3-16F-](#)
[BB000](#) [1-1634201-0](#) [999-16702-001](#) [A101J2ZQ004](#) [A101J4ZQ004](#) [A101J51CB0004](#) [A107J51ZQ0004](#) [A201J1AQ004](#) [A201J1AV2Q004](#)
[A201J3ZB004](#) [A201J50ZQ004](#) [A203J51ZQ0004](#) [A226L11YZQ](#) [A22L11A](#) [A435S1YZQ](#) [H8500XBBBBL-A](#) [H8653VBBG2577W](#)
[HB130CHNWWNAAC](#) [1251.0303](#) [AE205J60V3B004](#) [RH110C2NBB](#) [1352.0107](#) [1363.0201](#) [AML25GBF2AA03GR](#) [1571099-3](#) [1571987-4](#)
[1571987-5](#) [1571989-7](#) [B123J77V7B2](#) [B226J50W4Q22P](#) [B433J37ZQ22M](#) [160212E](#) [1801.1164](#) [1831.1102](#) [1833.3402](#) [1837.1118](#)