



DATA SHEET	52003750
SKINDICHT® MR	valid from : 05.12.2017

The SKINDICHT® MR is a nickel-plated brass reducing ring with PG threads. It is used if threaded holes are already present on machines or equipment housings but are too large for the necessary glands.



Technical features:

Material	Brass, nickel-plated
External thread	PG9 up to PG48 acc. to DIN 40430
Internal thread	PG7 up to PG42 acc. to DIN 40430
Temperature range	-60°C up to +200°C

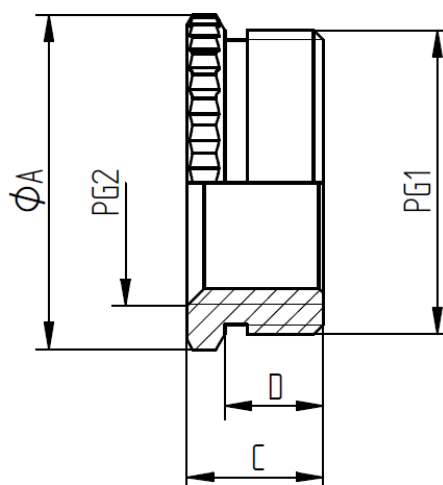


Norm references:

For more information please see our current catalogue.

elaborated by: PDP: M. Wegerer	Document: DB52003750_02EN	page 1 of 2
-----------------------------------	---------------------------	-------------

DATA SHEET	52003750
SKINDICHT® MR	valid from : 05.12.2017



External tread PG1	Internal thread PG2	Diameter ϕA mm	High C mm	High D mm	Article No.
PG 9	PG 7	17	8,5	6	52003750
PG 11	PG 7	20	8,5	6	52003760
PG 11	PG 9	20	8,5	6	52003770
PG 13,5	PG 7	22	9	6,5	52003780
PG 13,5	PG 9	22	9	6,5	52003790
PG 13,5	PG 11	22	9	6,5	52003800
PG 16	PG 7	24	9,5	6,5	52003810
PG 16	PG 9	24	9,5	6,5	52003820
PG 16	PG 11	24	9,5	6,5	52003830
PG 16	PG 13,5	24	9,5	6,5	52003840
PG 21	PG 11	30	10	7	52003850
PG 21	PG 13,5	30	10	7	52003860
PG 21	PG 16	30	10	7	52003870
PG 29	PG 13,5	39	11,5	8	52003880
PG 29	PG 16	39	11,5	8	52003890
PG 29	PG 21	39	11,5	8	52003900
PG 36	PG 16	50	12,5	9	52003910
PG 36	PG 21	50	12,5	9	52003920
PG 36	PG 29	50	12,5	9	52003930
PG 42	PG 29	57	14	10	52003940
PG 42	PG 36	57	14	10	52003950
PG 48	PG 36	64	14	10	52003970
PG 48	PG 42	64	14	10	52003980

elaborated by: PDP: M. Wegerer	Document: DB52003750_02EN	page 2 of 2
-----------------------------------	---------------------------	-------------

X-ON Electronics

Largest Supplier of Electrical and Electronic Components

Click to view similar products for [Cable Glands, Strain Reliefs & Cord Grips](#) category:

Click to view products by [Lapp Kabel](#) manufacturer:

Other Similar products are found below :

[120-116-1-1-20BP](#) [120-116-1-1-32BE](#) [120-117-40](#) [120-123-14](#) [120-123-16](#) [120-125-16](#) [120-125-16R](#) [120-125-16Y](#) [120-125-24Y](#) [120-125-28](#) [120-125-28R](#) [120-125-32](#) [120-125-32R](#) [120-125-40](#) [120-125-56](#) [120-126-14](#) [120-126-16](#) [120-126-20](#) [120-126-20BL](#) [120-126-20R](#) [120-126-24](#) [120-126-28](#) [120-126-32](#) [120-126-40BL](#) [120-116-1-1-06BP-509](#) [120-116-1-1-06CP](#) [120-116-1-1-16BE](#) [120-116-1-1-28BP](#) [120-123-20](#) [120-123-24](#) [120-123-32](#) [120-125-20](#) [120-125-20Y](#) [120-125-24](#) [120-125-24R](#) [120-125-28Y](#) [120-126-14BL](#) [120-126-16R](#) [120-126-16Y](#) [120-126-24BL](#) [120-126-28BL](#) [120-126-32BL](#) [120-126-40](#) [120-126-48](#) [120-126-48BL](#) [1300980012](#) [1300980105](#) [DBZM-6828](#) [1498](#) [15190-103 R2](#)