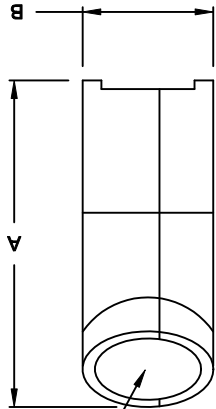
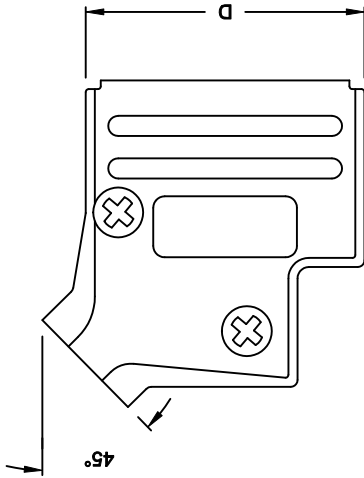
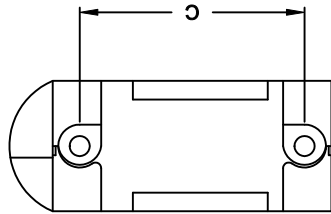


ROHS COMPLIANT



MH CONNECTORS LTD.

SPECIFICATION:
 BACKSHELL MATERIAL: DIE CAST ZINC ALLOY
 COMPRESSION INSERT: ABS - UL RECOGNIZED
 HOUSING SCREWS: STEEL - ZN PLATED
 OPERATING TEMP: -40° TO +120°



E = Max. CABLE O.D.

BACKSHELL KIT INCLUDES:
 (2) BACKSHELL HALVES
 (2) MOUNTING SCREWS
 (1) SET OF COMPRESSION INSERTS - VARIOUS SIZES
 DIAMETER: 4mm (0.157"), 5mm (0.197"), 7mm (0.276"), 9mm (0.354")

THESE DRAWINGS AND SPECIFICATIONS ARE THE PROPERTY OF MH CONNECTORS LTD. AND SHALL NOT BE REPRODUCED, COPIED OR USED AS THE BASIS FOR THE MANUFACTURE OR SALE OF APPARATUS WITHOUT WRITTEN PERMISSION.

DRAWN		P. JENKINS		DATE		03-14-12	
APPROVED		D. CROFT		DATE		03-14-12	
SCALE		SHEET		OF		1	
NTS		REV:		A			
DRAWING No				MHDVSL SERIES			

ORDERING INFORMATION:

SIZE:	P/N - BULK:	PRODUCT CODE:
9-WAY	6561-0206-31	MHDVSL-09
15-WAY	6561-0206-32	MHDVSL-15
25-WAY	6561-0206-33	MHDVSL-25
37-WAY	6561-0206-34	MHDVSL-37

SIZE:	P/N - KITTED:	PRODUCT CODE:
9-WAY	6560-0206-31	MHDVSL-09-K
15-WAY	6560-0206-32	MHDVSL-15-K
25-WAY	6560-0206-33	MHDVSL-25-K
37-WAY	6560-0206-34	MHDVSL-37-K

SIZE:	A ±.25	B ±.25	C ±.19	D ±.05	E
09	36.30	14.50	24.99	30.99	13.00
15	1.429	0.571	0.984	1.220	0.512
	40.30	14.50	33.32	39.50	13.00
25	1.587	0.571	0.984	1.220	0.512
	40.30	14.50	47.04	53.19	13.00
37	1.587	0.571	0.984	1.220	0.512
	40.30	14.50	63.5	69.70	13.00
	1.587	0.571	0.571	2.500	2.744
					0.512

DIMENSIONS (mm/in.)

X-ON Electronics

Largest Supplier of Electrical and Electronic Components

Click to view similar products for [D-Sub Standard Connectors](#) category:

Click to view products by [MH Connectors](#) manufacturer:

Other Similar products are found below :

[DCM37S732N](#) [DAM15P500](#) [DEV09S364GTLF](#) [DEM09P032N](#) [DDM50P732N](#) [DAM15S332N](#) [173109-2218](#) [173109-2466](#) [173109-2436](#)
[173109-2435](#) [56F706-005-LI](#) [56F711-015](#) [015-0341-000](#) [015-0372-008](#) [015-8544-011](#) [017041-0005](#) [020419-0104](#) [012-0515-000](#) [012-9507-](#)
[034](#) [012-9507-114](#) [012-9534-001](#) [020745-0008](#) [609-25P](#) [M24308/2-23Z](#) [M243082310F](#) [M243082410F](#) [M243082411F](#) [M24308/4-21](#)
[CT1A18-11PSA206](#) [CT1N36-5SC](#) [CT2-16S-17PS](#) [CT2-20-15PCAU](#) [CT2-24-12PS](#) [CT2-24-28PSF127A206](#) [CT2-32-9PC](#) [CT6F9767-14-4-](#)
[14S-5PC](#) [CT6FA10SL-4PS](#) [CT7-18-10SC](#) [CT7-18-10SCAU](#) [CT7-18-12SCAU](#) [CT7-18-1PC](#) [CT7-18-1PCAU](#) [CT7-18-21SCAU](#) [M83513/01-](#)
[FC](#) [M83723/76W24619 L/C](#) [M85049/48-3-2F](#) [69001-865](#) [6STD09PCM99B70X](#) [6STD09SCM99B30X](#) [6STD09SCT99S40X](#)