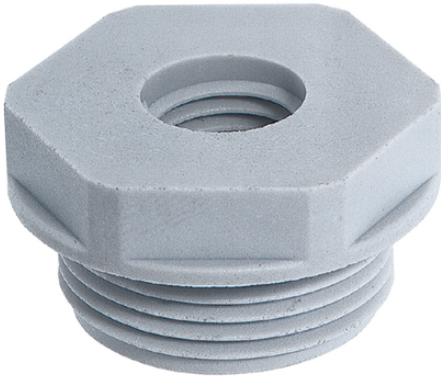


SKINDICHT® KU-M

SKINDICHT® KU-M, polyamide, glass fibre-reinforced reducers for maximum mechanical stability, with metric connection thread



Connector with standard housing unit



Space requirement



Assembly time

Benefits

Enables the use of cable glands with smaller connection threads than the existing threaded holes

Application range

Machines
Devices
Housings

Product Make-up

Metric connection thread acc. to DIN EN 60423
Basis for technical information DIN IEC 62444

SKINDICHT® KU-M**Technical Data**

Classification ETIM 5:	ETIM 5.0 Class-ID: EC000441 ETIM 5.0 Class-Description: Cable screw gland
Classification ETIM 6:	ETIM 6.0 Class-ID: EC000441 ETIM 6.0 Class-Description: Cable screw gland
Colour delivered:	Light grey (RAL 7035)
Material:	Polyamide, glass fibre-reinforced
Temperature range:	-40°C to +100°C

Note

Photographs and graphics are not to scale and do not represent detailed images of the respective products. Prices are net prices without VAT and surcharges. Sale to business customers only.

Article number	Thread, male M1	Thread, female M2	SW wre
SKINDICHT® KU-M			
52104505	16 x 1.5	12 x 1.5	22
52104470	20 x 1.5	12 x 1.5	24
52104504	20 x 1.5	16 x 1.5	24
52104472	25 x 1.5	12 x 1.5	29
52104473	25 x 1.5	16 x 1.5	29
52104474	25 x 1.5	20 x 1.5	29
52104475	32 x 1.5	12 x 1.5	36
52104476	32 x 1.5	16 x 1.5	36
52104477	32 x 1.5	20 x 1.5	36
52104478	32 x 1.5	25 x 1.5	36
52104479	40 x 1.5	16 x 1.5	46
52104480	40 x 1.5	20 x 1.5	46
52104481	40 x 1.5	25 x 1.5	46
52104482	40 x 1.5	32 x 1.5	46
52104483	50 x 1.5	20 x 1.5	55
52104484	50 x 1.5	25 x 1.5	55
52104485	50 x 1.5	32 x 1.5	55
52104486	50 x 1.5	40 x 1.5	55
52104487	63 x 1.5	25 x 1.5	68
52104488	63 x 1.5	32 x 1.5	68
52104489	63 x 1.5	40 x 1.5	68
52104469	63 x 1.5	50 x 1.5	68

Last Update (29.03.2018)
 ©2018 Lapp Group - Technical changes reserved
 Product Management www.lappkabel.de
 You can find the current technical data in the corresponding data sheet.
 PN 0456 / 02_03.16

X-ON Electronics

Largest Supplier of Electrical and Electronic Components

Click to view similar products for [Cable Glands, Strain Reliefs & Cord Grips](#) category:

Click to view products by [Lapp Kabel](#) manufacturer:

Other Similar products are found below :

[120-116-1-1-20BP](#) [120-116-1-1-32BE](#) [120-117-40](#) [120-123-14](#) [120-123-16](#) [120-125-16](#) [120-125-16R](#) [120-125-16Y](#) [120-125-24Y](#) [120-125-28](#) [120-125-28R](#) [120-125-32](#) [120-125-32R](#) [120-125-40](#) [120-125-56](#) [120-126-14](#) [120-126-16](#) [120-126-20](#) [120-126-20BL](#) [120-126-20R](#) [120-126-24](#) [120-126-28](#) [120-126-32](#) [120-126-40BL](#) [120-116-1-1-06BP-509](#) [120-116-1-1-06CP](#) [120-116-1-1-16BE](#) [120-116-1-1-28BP](#) [120-123-20](#) [120-123-24](#) [120-123-32](#) [120-125-20](#) [120-125-20Y](#) [120-125-24](#) [120-125-24R](#) [120-125-28Y](#) [120-126-14BL](#) [120-126-16R](#) [120-126-16Y](#) [120-126-24BL](#) [120-126-28BL](#) [120-126-32BL](#) [120-126-40](#) [120-126-48](#) [120-126-48BL](#) [1300980012](#) [1300980105](#) [DBZM-6828](#) [1498](#) [15190-103 R2](#)