



**Eckwinkel 20**

**3-way Connection Angle 20**

**Beschreibung** Zinkdruckguss, für Profil 20  
zur rechtwinkligen Verbindung von bis zu drei Aluminiumprofilen

**Material** Zinkdruckguss

**Oberfläche** blank

**Befestigung** Senkschrauben M5

**Liefereinheit** 50 Stück

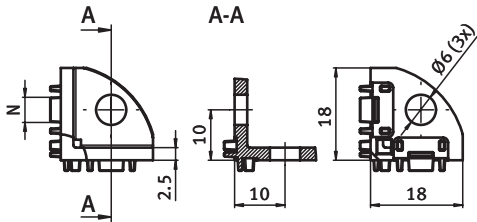
**Description** *Die-cast Zinc, for Profile 20*  
*To connect up to three aluminum profiles at right angles*

**Material** *Die-cast zinc*

**Surface** *Plain*

**Fastening** *Countersunk screws M5*

**Pack Quantity** *50 pieces*



Eckwinkel 20  
3-way Connection Angle 20

N

für Schraube  
for Screw

Gewicht [g]  
Weight [g]

Teil-Nr.  
Part #

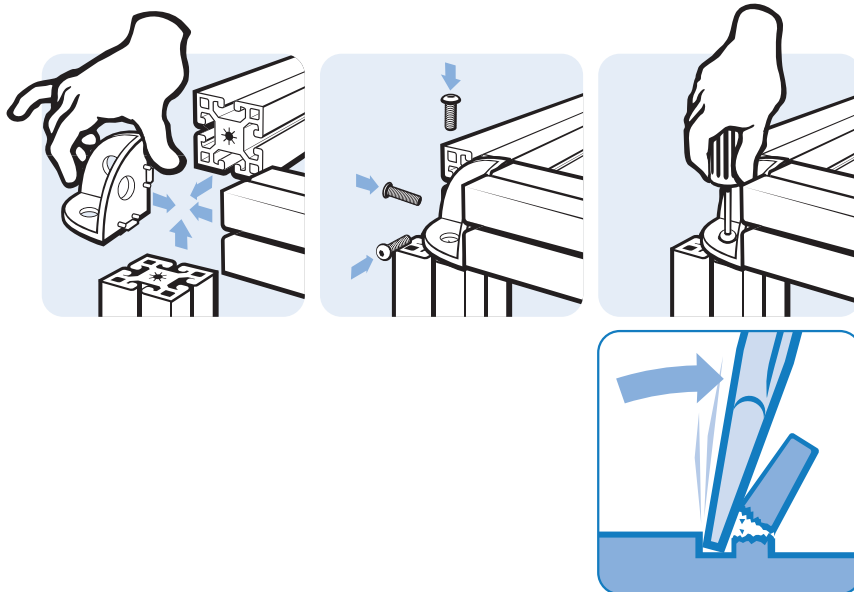
5

M5

10.0

I

093WE201N05



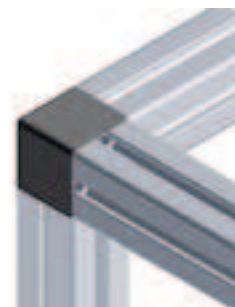
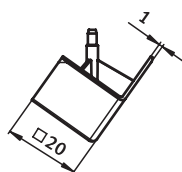
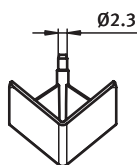


## Abdeckkappe für Eckwinkel 20

## Cover Cap for 3-way Connection Angle 20

**Beschreibung** Kunststoff PA, Profil 20, Eckform zum Abdecken der offenen Seite des Eckwinkels  
**Material** Kunststoff PA, glasfaserverstärkt  
**Farbe** schwarz  
**Liefereinheit** 50 Stück  
**Extras** weitere Farben auf Anfrage

**Description** Nylon PA, Profile 20, Angular To cover the 3-way connection angle  
**Material** Nylon PA, glass fibre reinforced  
**Color** Black  
**Pack Quantity** 50 pieces  
**Specials** Other colors on request



Abdeckkappe Eckform  
 Cover Cap Angular

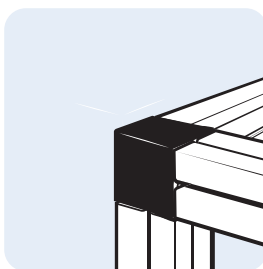
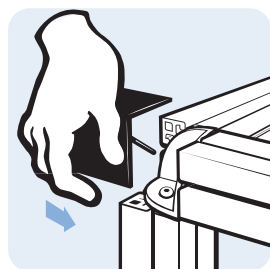
Gewicht [g]  
 Weight [g]

Teil-Nr.  
 Part #

2.0

I

093WEA201A





### Abdeckkappe für Eckwinkel 20

### Cover Cap for 3-way Connection Angle 20

**Beschreibung** Kunststoff PA, Profil 20, Rundform  
zum Abdecken der offenen Seite des Eckwinkels

**Material** Kunststoff PA, glasfaserverstärkt

**Farbe** schwarz

**Liefereinheit** 50 Stück

**Extras** weitere Farben auf Anfrage

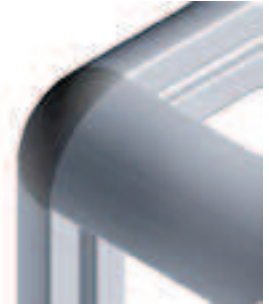
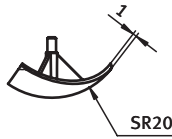
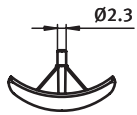
**Description** Nylon PA, Profile 20, Round  
To cover the 3-way connection angle

**Material** Nylon PA, glass fibre reinforced

**Color** Black

**Pack Quantity** 50 pieces

**Specials** Other colors on request



Abdeckkappe Rundform  
*Cover Cap Round*

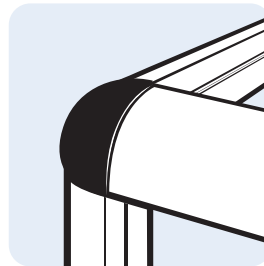
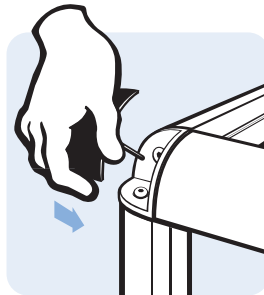
Gewicht [g]  
*Weight [g]*

Teil-Nr.  
*Part #*

1.0

I

093WEA201B



## X-ON Electronics

Largest Supplier of Electrical and Electronic Components

*Click to view similar products for [Electrical Enclosure Accessories](#) category:*

*Click to view products by [Fath](#) manufacturer:*

Other Similar products are found below :

[60121-06-028 C-325 Black](#) [71884-04-028 CM3-100 Black](#) [71884-18-028 LH43-200 Black](#) [71884-24-028 LH75-200 Black](#) [71885-01-028 CM6-150 Black](#) [72459-02-028 DM-3 BLACK](#) [81501-01-000 XPL, 9VB Black](#) [82402-01 PT-8 ALUM](#) [1335GSKT3](#) [14101FP-PK](#) [CB-1263-BT](#) [1611512-4](#) [HB-11498](#) [RC-7775](#) [HM BLACK PANEL](#) [61033-01-000](#) [115123-01-508 CN-RL RS](#) [115124-01-508 CN-XRL XRS](#) [115119-01-000 CN-RL RS](#) [115123-01-000 CN-RL RS](#) [60121-04-028 C-275 Black](#) [60128-01-072](#) [60222-01-028 CM6-225 Black](#) [60272-01-028 CM3-150 Black](#) [60851-01-028 CM69-120 Black](#) [62291-502-000-KEU-10-BLK](#) [62452-01-000 HML-9VB, EB Black](#) [71884-25-028 LH89-130 Black](#) [AXX2POSTBRCKT](#) [FUPMESK](#) [71884-23-028 LH75-130 Black](#) [1317GSKTSC](#) [8G813V40389](#) [DVA.1-10-15-M4-10-70](#) [DVC.1-60-49-60-M10-28-55](#) [DVC.1-15-8,5-15-M4-10-40](#) [DVC.1-20-12-30-M6-18-40](#) [DVC.1-30-18-25-M8-20-40](#) [DVC.1-35-31-15-M8-20-40](#) [DVC.1-35-31-15-M8-20-70](#) [DVC.1-75-60-40-M12-37-70](#) [DVC.2-30-22-20-M8-20-55](#) [DVC.2-40-30-25-M8-23-55](#) [DVC.2-75-60-40-M12-37-55](#) [DVC.2-21-16-22-M6-18-40](#) [DVC.2-40-20-48-M8-23-40](#) [DVC.2-40-32-50-M8-23-40](#) [DVC.2-20-14-19-M6-18-70](#) [DVC.2-25-18-20-M6-18-70](#) [DVC.3-20-14-20-M6-40](#) [DVC.3-20-14-30-M6-40](#)