



Uniblock 18

Uniblock 18

Beschreibung Kunststoff PA, Nut 6, 8, 10, 12
zur einfachen Befestigung von Flächenelementen an Aluminiumprofilen

Material Block: Kunststoff PA, glasfaserverstärkt
Mutter: Stahl, verzinkt

Farbe schwarz

Liefereinheit 100 Stück

Extras individueller Hammer, weitere Farben auf Anfrage

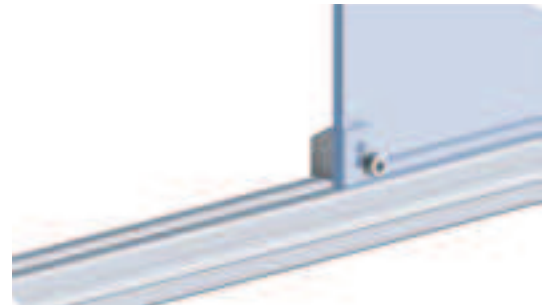
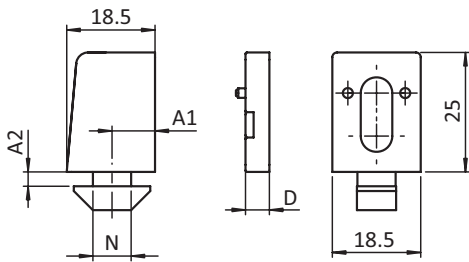
Description Nylon PA, Slot 6, 8, 10, 12
To attach panels easily to aluminum profiles

Material Block: Nylon PA, glass fibre reinforced
Nut: Zinc plated steel

Color Black

Pack Quantity 100 pieces

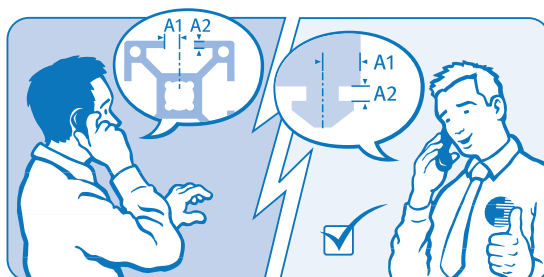
Specials Customized hammer, other colors on request



Uniblock 18	N	Gewinde Thread	A1 [mm]	A2 [mm]	D [mm]	Gewicht [g] Weight [g]	Teil-Nr. Part #
	6	M4	A1	A2	-	9.0	UNI18N6M4
	6	M5	A1	A2	-	9.0	UNI18N6M5
	6	M6	A1	A2	-	9.0	UNI18N6M6
	8	M4	A1	A2	-	9.0	UNI18N8M4
	8	M5	A1	A2	-	9.0	UNI18N8M5
	8	M6	A1	A2	-	9.0	UNI18N8M6
	10	M4	A1	A2	-	9.0	UNI18N10M4
	10	M5	A1	A2	-	9.0	UNI18N10M5
	10	M6	A1	A2	-	9.0	UNI18N10M6
	12	M4	A1	A2	-	9.0	UNI18N12M4
	12	M5	A1	A2	-	9.0	UNI18N12M5
	12	M6	A1	A2	-	9.0	UNI18N12M6
	6	M4	7.0	2.7	-	8.0	I 094100M4
	6	M5	7.0	2.7	-	8.1	I 094100M5
	6	M6	7.0	2.7	-	8.2	I 094100M6
	8	M4	7.0	1.9	-	8.3	B 094002M4
	8	M5	7.0	1.9	-	8.4	B 094002M5
	8	M6	7.0	1.9	-	8.6	B 094002M6
Distanzstück <i>Spacer</i>	-	-	-	-	*2.0	1.0	094102
	-	-	-	-	3.0	1.2	094103
	-	-	-	-	5.0	2.1	094105

* keine weiteren Distanzstücke aufsteckbar!

* no further spacers can be added!





**NEU
NEW**

Uniblock 18 CS

mit Verliersicherung für Schraube

Beschreibung zur sicheren Befestigung von Flächenelementen an Aluminiumprofilen; mit Verliersicherung für Schraube gemäß Maschinenrichtlinie 2006/42/EG

Material Block: Kunststoff PA, glasfaserverstärkt
Mutter: Stahl, verzinkt

Farbe schwarz

Liefereinheit 100 Stück

Extras individueller Hammer, weitere Farben auf Anfrage

Uniblock 18 CS

with Screw Retainer

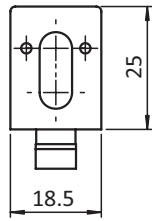
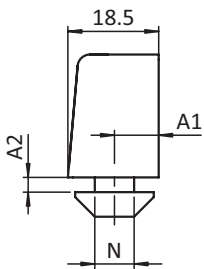
Description To attach panels safely to aluminum profiles; with screw retainer to comply with Machinery Directive 2006/42/EC

Material Block: Nylon PA, glass fibre reinforced
Nut: Zinc plated steel

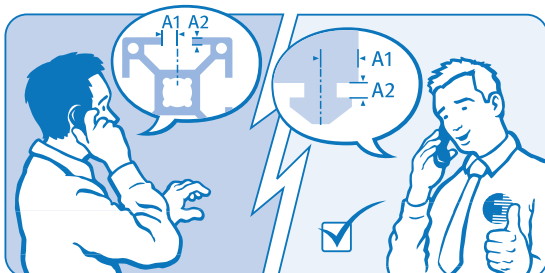
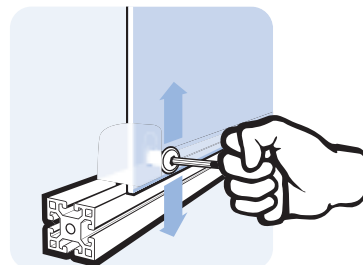
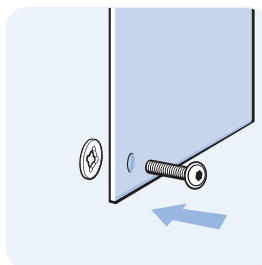
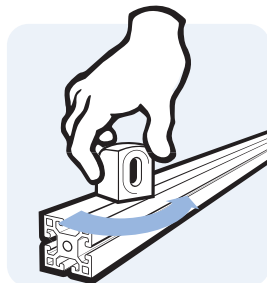
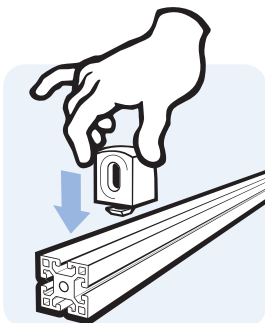
Color Black

Pack Quantity 100 pieces

Specials Customized hammer, other colors on request



Uniblock 18 CS	N	Gewinde Thread	A1 [mm]	A2 [mm]	Gewicht [g] Weight [g]		Teil-Nr. Part #
	6	M5	A1	A2	9.0		UNI18CSN6M5
	6	M6	A1	A2	9.0		UNI18CSN6M6
	8	M5	A1	A2	9.2		UNI18CSN8M5
	8	M6	A1	A2	9.2		UNI18CSN8M6
	10	M5	A1	A2	9.3		UNI18CSN10M5
	10	M6	A1	A2	9.3		UNI18CSN10M6
	12	M5	A1	A2	9.5		UNI18CSN12M5
	12	M6	A1	A2	9.5		UNI18CSN12M6
	6	M6	7.0	2.7	9.0	I	094100CSM6
	8	M6	7.0	1.9	8.5	B	094002CSM6





Uniblock 25

Uniblock 25

Beschreibung Kunststoff PA, Nut 8, 9, 10, 12
zur einfachen Befestigung von Flächenelementen an Aluminiumprofilen

Material Block: Kunststoff PA, glasfaserverstärkt
Mutter: Stahl, verzinkt

Farbe schwarz

Liefereinheit 100 Stück

Extras individueller Hammer, weitere Farben auf Anfrage

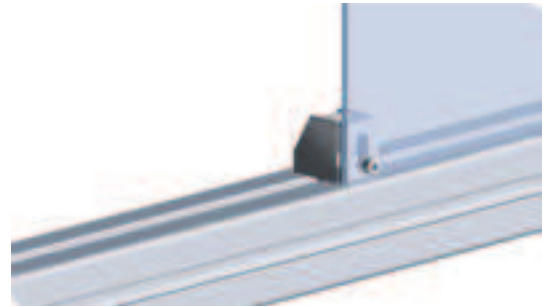
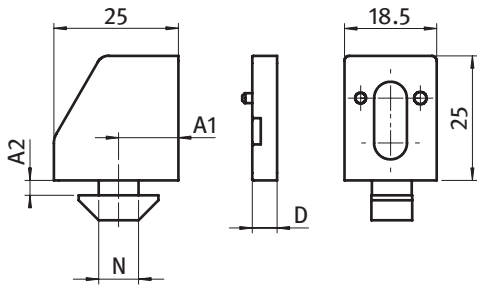
Description Nylon PA, Slot 8, 9, 10, 12
To attach panels easily to aluminum profiles

Material Block: Nylon PA, glass fibre reinforced
Nut: Zinc plated steel

Color Black

Pack Quantity 100 pieces

Specials Customized hammer, other colors on request



Uniblock 25	N	Gewinde Thread	A1 [mm]	A2 [mm]	D [mm]	Gewicht [g] Weight [g]		Teil-Nr. Part #
	8	M4	A1	A2	-	10.5		UNI25N8M4
	8	M5	A1	A2	-	10.5		UNI25N8M5
	8	M6	A1	A2	-	10.5		UNI25N8M6
	10	M4	A1	A2	-	10.5		UNI25N10M4
	10	M5	A1	A2	-	10.5		UNI25N10M5
	10	M6	A1	A2	-	10.5		UNI25N10M6
	12	M4	A1	A2	-	10.5		UNI25N12M4
	12	M5	A1	A2	-	10.5		UNI25N12M5
	12	M6	A1	A2	-	10.5		UNI25N12M6
	8	M4	8.0	4.35	-	9.8	I	094003M4
	8	M5	8.0	4.35	-	9.7	I	094003M5
	8	M6	8.0	4.35	-	9.6	I	094003M6
	8	M4	12.0	4.4	-	9.8	I	094020M4
	8	M5	12.0	4.4	-	9.7	I	094020M5
	8	M6	12.0	4.4	-	9.6	I	094020M6
	8	M4	14.0	4.6	-	10.0	I	094080M4
	8	M5	14.0	4.6	-	9.9	I	094080M5
	8	M6	14.0	4.6	-	9.8	I	094080M6
	10	M4	8.5	5.7	-	10.6	B	094008M4
	10	M5	8.5	5.7	-	10.5	B	094008M5
	10	M6	8.5	5.7	-	10.4	B	094008M6
	10	M4	9.5	5.6	-	10.6	B	094004M4
	10	M5	9.5	5.6	-	10.5	B	094004M5
	10	M6	9.5	5.6	-	10.4	B	094004M6
	10	M4	14.0	6.0	-	10.4	B	094005M4
	10	M5	14.0	6.0	-	10.3	B	094005M5
	10	M6	14.0	6.0	-	10.2	B	094005M6
Distanzstück <i>Spacer</i>	-	-	-	-	*2.0	1.0		094102
	-	-	-	-	3.0	1.2		094103
	-	-	-	-	5.0	2.1		094105

* keine weiteren Distanzstücke aufsteckbar!

* no further spacers can be added!

X-ON Electronics

Largest Supplier of Electrical and Electronic Components

Click to view similar products for [LED Lighting Mounting Accessories](#) category:

Click to view products by [Fath](#) manufacturer:

Other Similar products are found below :

[C16142_HEKLA-SOCKET-K](#) [3SU1401-1BF20-3AA0](#) [3SU1401-1BF60-3AA0](#) [3SU1900-0BC31-0AA0](#) [3SU1900-0BC31-0NB0](#) [2213118-2](#)
[3SU1401-2BB20-1AA0](#) [3SU1401-2BB40-1AA0](#) [3SU1401-2BB60-1AA0](#) [3SU1401-2BB60-3AA0](#) [1SFA616921R2131](#) [1SFA616921R2132](#)
[1SFA616921R2133](#) [1SFA611621R1033](#) [1SFA611621R1091](#) [23110022](#) [23110040](#) [23120022](#) [23130000](#) [68550022](#) [68550040](#) [70290000](#)
[70290022](#) [70290040](#) [70300022](#) [76620000](#) [76990022](#) [77280022](#) [77980022](#) [77990001](#) [77990002](#) [77990040](#) [83130001](#) [83130040](#) [83150001](#)
[83150022](#) [83150040](#) [83980001](#) [83980040](#) [83990001](#) [83990022](#) [83990040](#) [84040022](#) [84510002](#) [86050038](#) [86180003](#) [89080002](#) [89080022](#)
[89140002](#) [89980002](#)