



Quality Products. Service Excellence.

Type 4X, 6P Polycarbonate & General Purpose ABS Enclosures *1554 Series*

Watertight, Flat Lid, UL Listed Options

Key Features



- Ideally suited for mounting printed circuit boards or DIN rail mounted components (see photo features below for details).
- ABS Versions are molded from general purpose material which carries a flammability rating of UL94-HB. For indoor use.
- Polycarbonate versions are UV stabilized for outdoor use. Gray polycarb carries a UL94-5VA rating, while clear and smoked lids carry a UL94V-0 rating.
- Polycarbonate versions are cUL and UL 508A listed (File # E65324). ABS plastic versions are not UL listed.
- Enclosure color is a light gray (RAL 7035).
- Gasketed lid with two piece “tongue & groove” construction provides protection against access of oil, dust and water.
- Gasket is one piece made from high temperature, U.L. listed silicone.
- Polycarb versions are designed to meet NEMA Type 4, 4X, 6, 6P, 12 & 13 ratings which meet and exceed IP ratings up to and including IP68. (Except 1554/55 V size which is 4,4X only)
- ABS Plastic versions are designed to meet IP66.
- Lid is secured with included M4 stainless steel machine screws which are threaded into integral stainless steel bushings for repetitive assembly & disassembly. All hardware is stainless steel to avoid corrosion caused by dissimilar metals.
- Lid screws are self capturing (lid holes are threaded with the first installation of lid screws).
- Internal features are maximized for mounting options and vary with size:
 - Internal DIN rail mounting tabs molded into most models, except sizes “C” and “D”.
 - Threaded (M3) integral brass inserts and/or standoffs (#6 self tapping screws) for P.C. board or inner panel mounting in all but the smallest size (“B”).
 - Vertical P.C. card guides (for 1.5 mm thick P.C. boards) are molded in all but the smallest size (“B”).

Photo Features

Polycarbonate versions available with gray, clear, or smoked lid. ABS version available only in gray.



Gray



Clear

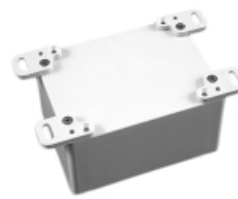
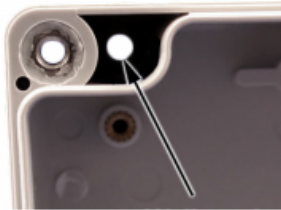


Smoked

Wall-mounting holes are located outside of the gasket channel

Same wall mounting holes can be used to install an accessory foot kit, 1554FT

Internal mounting posts can be used to mount accessory inner panels, PC boards, or DIN rails (inner panel shown)



Accessories

- Breather Kit
- Pressure Compensation Plug
- Hole Plugs
- Pole Mount Kit
- Liquid-Tight Cordgrips (Nylon)
- Small Rainproof Ventilator
- Hole Plugs
- Hole Plugs
- Liquid-Tight Cordgrips (Nickel Plated Brass)

Enclosure Part Numbers

ABS		Polycarbonate (UL Listed)		Qty Lid						Replacement	Replacement
Gray Lid	Gray Lid	Clear Lid	Smoked Lid	Screws	Length	Width	Total Height	Inner Panel	Foot Kit	Gasket	Screws (50-pk)
1554BGY	1554B2GY	1554B2GYCL	1554B2GYSL	4	2.60	2.60	1.60	1554BPL	1554FT	1554BGASKET	SC576-50
1554EGY	1554E2GY	1554E2GYCL	1554E2GYSL	4	3.50	3.50	2.40	1554EPL	1554FT	1554EGASKET	SC576-50
1554EEGY	1554EE2GY	1554EE2GYCL	1554EE2GYSL	4	3.50	3.50	3.50	1554EPL	1554FT	1554EGASKET	SC576-50
1554LGY	1554L2GY	1554L2GYCL	1554L2GYSL	4	4.13	4.13	2.36	1554LPL	1554FT	1554LGASKET	SC576-50
1554LAGY	1554LA2GY	1554LA2GYCL	1554LA2GYSL	4	4.13	4.13	3.54	1554LPL	1554FT	1554LGASKET	SC576-50
1554CGY	1554C2GY	1554C2GYCL	1554C2GYSL	4	4.70	2.60	1.60	1554CPL	1554FT	1554CGASKET	SC576-50
1554DGY	1554D2GY	1554D2GYCL	1554D2GYSL	4	4.70	2.60	2.40	1554CPL	1554FT	1554CGASKET	SC576-50
1554FGY	1554F2GY	1554F2GYCL	1554F2GYSL	4	4.70	3.50	2.40	1554FPL	1554FT	1554FGASKET	SC576-50
1554GGY	1554G2GY	1554G2GYCL	1554G2GYSL	4	4.70	3.50	3.15	1554FPL	1554FT	1554FGASKET	SC576-50
1554NGY	1554N2GY	1554N2GYCL	1554N2GYSL	4	4.70	4.70	2.40	1554NPL	1554FT	1554NGASKET	SC576-50
1554PGY	1554P2GY	1554P2GYCL	1554P2GYSL	4	4.70	4.70	3.50	1554NPL	1554FT	1554NGASKET	SC576-50
1554QGY	1554Q2GY	1554Q2GYCL	1554Q2GYSL	4	5.51	5.51	2.36	1554QPL	1554FT	1554QGASKET	SC576-50
1554QAGY	1554QA2GY	1554QA2GYCL	1554QA2GYSL	4	5.51	5.51	3.54	1554QPL	1554FT	1554QGASKET	SC576-50
1554JGY	1554J2GY	1554J2GYCL	1554J2GYSL	4	6.30	3.50	2.40	1554JPL	1554FT	1554JGASKET	SC576-50
1554KGY	1554K2GY	1554K2GYCL	1554K2GYSL	4	6.30	3.50	3.50	1554JPL	1554FT	1554JGASKET	SC576-50
1554RGY	1554R2GY	1554R2GYCL	1554R2GYSL	4	6.30	6.30	2.40	1554RPL	1554FT	1554RGASKET	SC576-50
1554SGY	1554S2GY	1554S2GYCL	1554S2GYSL	4	6.30	6.30	3.50	1554RPL	1554FT	1554RGASKET	SC576-50
1554HGY	1554H2GY	1554H2GYCL	1554H2GYSL	4	7.10	4.70	2.40	1554HPL	1554FT	1554HGASKET	SC576-50
1554TGY	1554T2GY	1554T2GYCL	1554T2GYSL	4	7.10	4.70	3.50	1554HPL	1554FT	1554HGASKET	SC576-50
1554WGY	1554W2GY	1554W2GYCL	1554W2GYSL	4	7.10	7.10	2.36	1554WPL	1554FT	1554WGASKET	SC576-50
1554WAGY	1554WA2GY	1554WA2GYCL	1554WA2GYSL	4	7.10	7.10	3.54	1554WPL	1554FT	1554WGASKET	SC576-50
1554UGY	1554U2GY	1554U2GYCL	1554U2GYSL	4	7.90	4.70	3.50	1554UPL	1554FT	1554UGASKET	SC576-50
1554VGY	1554V2GY	1554V2GYCL	1554V2GYSL	4	9.40	6.30	3.50	1554VPL	1554FT	1554VGASKET	SC583-50
1554VAGY	1554VA2GY	1554VA2GYCL	1554VA2GYSL	6	9.40	6.30	3.50	1554VAPL	1554FT	1554VAGASKET	SC583-50
1554VBGY	1554VB2GY	1554VB2GYCL	1554VB2GYSL	6	9.40	6.30	4.70	1554VAPL	1554FT	1554VAGASKET	SC583-50

Data subject to change without notice

X-ON Electronics

Largest Supplier of Electrical and Electronic Components

Click to view similar products for [Enclosures, Boxes, & Cases](#) category:

Click to view products by [Hammond](#) manufacturer:

Other Similar products are found below :

[CR-425 PAINTED](#) [585-R-WH-PK](#) [M-10-PLATED](#) [60221-01](#) [60566-01-000](#) [HPL-9VB BATT DOOR](#) [M-16-LID-PLATED](#) [M18-PLTD](#) [M-21-LID-PLATED](#) [M-21-PLATED](#) [M-23-PLATED](#) [CU-281-MB](#) [6711GSKT](#) [71884-29-028](#) [LH45-100 Black](#) [7200B](#) [72868-510-000](#) [CNS-0000 Black](#) [72883-510-000](#) [CNS-0101 Black](#) [72906-510-000](#) [CNS-0407 Black](#) [73091-510-000](#) [CNM-0000-BLACK Kit](#) [73092-510-000](#) [CNM-0101 Black](#) [73108-510-000](#) [CNL-0303 Black](#) [73395-510-039](#) [CNS-0006 Bone](#) [74257-510-000](#) [CNL-0004](#) [MDC-1183-PLAIN-ALUM](#) [MDC-1183-PTD](#) [MDC-13104-PLAIN-ALUM](#) [MDC-211 - PAINTED IVORY/BEIGE](#) [MDC-321-PTD](#) [MDC-432-PLAIN-ALUM](#) [MDC-973-PTD](#) [76](#) [77153-01-028](#) [FLX6030](#) [83535-01-508](#) [PS-11296-G](#) [PS-11298-B](#) [116-508](#) [120-407](#) [120-412](#) [120-909](#) [120-455](#) [R272-100-000](#) [120-910](#) [R501-001-010](#) [R508-080-000](#) [R508-160-000](#) [R530-120-000](#) [R530-122-000](#) [R530-200-000](#) [R531-160-000](#) [R531-200-000](#) [R582-080-100](#)