



Eckwinkel 30

3-way Connection Angle 30

**NEU
NEW**

Beschreibung Zinkdruckguss, für Profil 30 zur rechtwinkligen Verbindung von bis zu drei Aluminiumprofilen

Material Zinkdruckguss

Oberfläche blank

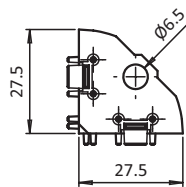
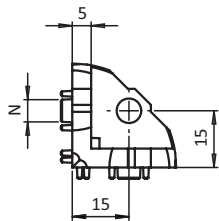
Liefereinheit 50 Stück

Description *Die-cast Zinc, for Profile 30 To connect up to three aluminum profiles at right angles*

Material *Die-cast zinc*

Surface *Plain*

Pack Quantity *50 pieces*



Eckwinkel 30
3-way Connection Angle 30

N

für Schraube
for Screw

Gewicht [g]
Weight [g]

Teil-Nr.
Part #

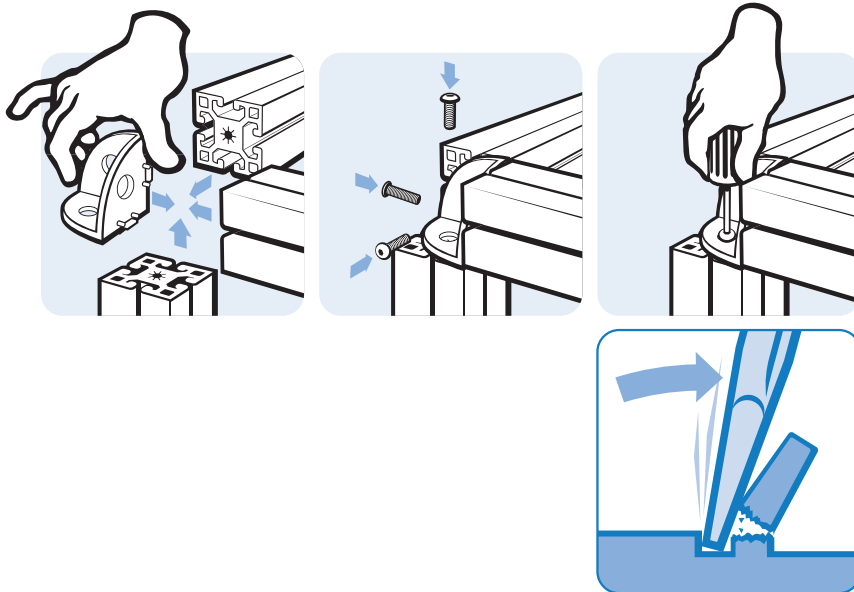
6

M6

39.6

I

093WE302N06





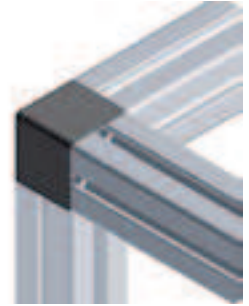
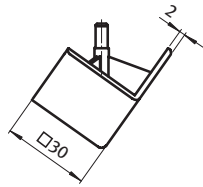
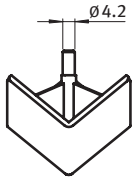
**NEU
NEW**

Abdeckkappe für Eckwinkel 30

Cover Cap for 3-way Connection Angle 30

Beschreibung Kunststoff PA, Profil 30, Eckform zum Abdecken der offenen Seite des Eckwinkels
Material Kunststoff PA, glasfaserverstärkt
Farbe schwarz
Liefereinheit 50 Stück
Extras weitere Farben auf Anfrage

Description Nylon PA, Profile 30, Angular To cover the 3-way connection angle
Material Nylon PA, glass fibre reinforced
Color Black
Pack Quantity 50 pieces
Specials Other colors on request



Abdeckkappe Eckform
 Cover Cap Angular

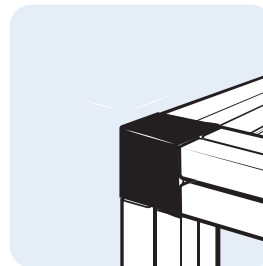
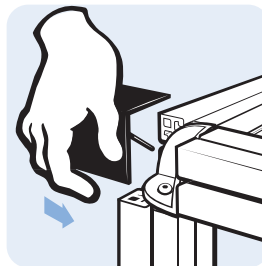
Gewicht [g]
 Weight [g]

Teil-Nr.
 Part #

10.0

I

093WEA302A





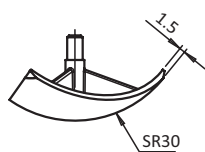
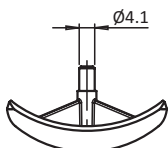
Abdeckkappe für Eckwinkel 30

Cover Cap for 3-way Connection Angle 30

NEU
NEW

Beschreibung Kunststoff PA, Profil 30, Rundform zum Abdecken der offenen Seite des Eckwinkels
Material Kunststoff PA, glasfaserverstärkt
Farbe schwarz
Liefereinheit 50 Stück
Extras weitere Farben auf Anfrage

Description Nylon PA, Profile 30, Round To cover the 3-way connection angle
Material Nylon PA, glass fibre reinforced
Color Black
Pack Quantity 50 pieces
Specials Other colors on request



Abdeckkappe Rundform
Cover Cap Round

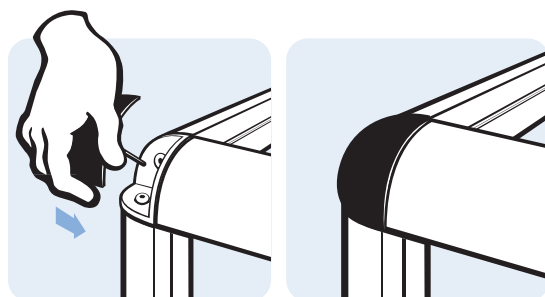
Gewicht [g]
 Weight [g]

Teil-Nr.
 Part #

4.0

I

093WEA302B



X-ON Electronics

Largest Supplier of Electrical and Electronic Components

Click to view similar products for [Electrical Enclosure Accessories](#) category:

Click to view products by [Fath](#) manufacturer:

Other Similar products are found below :

[60121-06-028 C-325 Black](#) [71884-04-028 CM3-100 Black](#) [71884-18-028 LH43-200 Black](#) [71884-24-028 LH75-200 Black](#) [71885-01-028 CM6-150 Black](#) [72459-02-028 DM-3 BLACK](#) [81501-01-000 XPL, 9VB Black](#) [82402-01 PT-8 ALUM](#) [1335GSKT3](#) [14101FP-PK](#) [CB-1263-BT](#) [1611512-4](#) [HB-11498](#) [RC-7775](#) [HM BLACK PANEL](#) [61033-01-000](#) [115123-01-508 CN-RL RS](#) [115124-01-508 CN-XRL XRS](#) [115119-01-000 CN-RL RS](#) [115123-01-000 CN-RL RS](#) [60121-04-028 C-275 Black](#) [60128-01-072](#) [60222-01-028 CM6-225 Black](#) [60272-01-028 CM3-150 Black](#) [60851-01-028 CM69-120 Black](#) [62291-502-000-KEU-10-BLK](#) [62452-01-000 HML-9VB, EB Black](#) [71884-25-028 LH89-130 Black](#) [AXX2POSTBRCKT](#) [FUPMESK](#) [71884-23-028 LH75-130 Black](#) [1317GSKTSC](#) [8G813V40389](#) [DVA.1-10-15-M4-10-70](#) [DVC.1-60-49-60-M10-28-55](#) [DVC.1-15-8,5-15-M4-10-40](#) [DVC.1-20-12-30-M6-18-40](#) [DVC.1-30-18-25-M8-20-40](#) [DVC.1-35-31-15-M8-20-40](#) [DVC.1-35-31-15-M8-20-70](#) [DVC.1-75-60-40-M12-37-70](#) [DVC.2-30-22-20-M8-20-55](#) [DVC.2-40-30-25-M8-23-55](#) [DVC.2-75-60-40-M12-37-55](#) [DVC.2-21-16-22-M6-18-40](#) [DVC.2-40-20-48-M8-23-40](#) [DVC.2-40-32-50-M8-23-40](#) [DVC.2-20-14-19-M6-18-70](#) [DVC.2-25-18-20-M6-18-70](#) [DVC.3-20-14-20-M6-40](#) [DVC.3-20-14-30-M6-40](#)