



Automatikverbinder

Automatic Connector

Beschreibung Stahl zur schnellen und stabilen Verbindung von zwei Aluminiumprofilen ohne Profilbearbeitung; selbstschneidendes Gewinde

Material Stahl

Oberfläche verzinkt

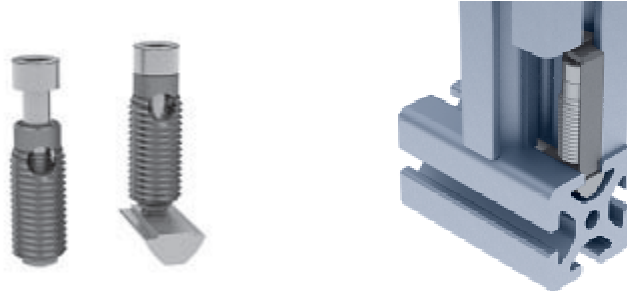
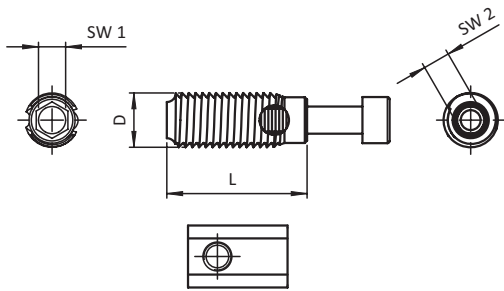
Liefereinheit 100 Stück

Description *Steel* To connect two aluminum profiles fast and solid, assembly without machining; self-cutting thread

Material *Steel*

Surface *Zinc plated*

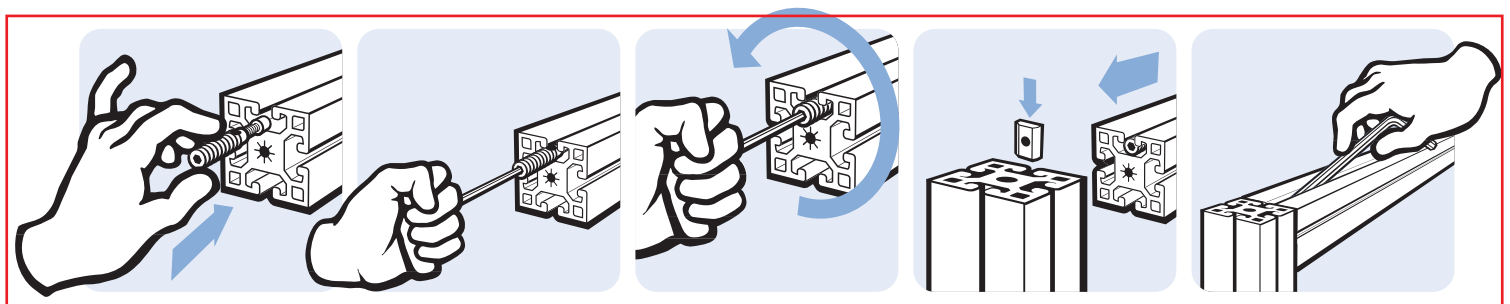
Pack Quantity *100 pieces*



| Automatikverbinder <i>Automatic Connector</i> | SW 2 | Nut Slot | Profil Profile | D [mm] | L [mm] | SW 1 | Schraube Screw | Gewicht [g] <i>Weight [g]</i> | | Teil-Nr. <i>Part #</i> |
|--|------|----------|----------------|--------|--------|------|----------------|----------------------------------|---|---------------------------|
| Schneidhülse <i>Cutting sleeve</i> | 4 | 5 | 20 | 7.0 | 24.0 | - | - | 2.5 | I | 099GS051 |
| | 5 | 6 | 30 | 10.0 | 27.0 | - | - | 7.5 | I | 099GS061 |
| | 5 | 8 | 30 | 10.7 | 24.0 | - | - | 7.5 | B | 099GS084 |
| | 6 | 8 | 40 | 12.0 | 31.0 | - | - | 13.0 | I | *099GS081 |
| | 6 | 10 | 40, 45 | 12.0 | 35.0 | - | - | 15.5 | B | 099GS102 |
| | 6 | 10 | 45 | 13.0 | 35.0 | - | - | 17.0 | B | 099GS103 |
| | 8 | 12 | 60 | 18.0 | 47.0 | - | - | 51.0 | I | 099GS121 |
| inkl. Montageset mit Schraube und Nutenstein (I) / Hammermutter (B) <i>With assembly set, incl. screw and T-slot nut (I) / hammer nut (B)</i> | 4 | 5 | 20 | 7.0 | 24.0 | 3 | M4 x 30 | 8.0 | I | 099G051 |
| | 5 | 6 | 30 | 10.0 | 27.0 | 4 | M5 x 35 | 18.0 | I | 099G061 |
| | 5 | 8 | 30 | 10.7 | 24.0 | 4 | M5 x 30 | 16.5 | B | 099G084 |
| | 6 | 8 | 40 | 12.0 | 31.0 | 5 | M6 x 40 | 33.0 | I | *099G081 |
| | 6 | 10 | 40, 45 | 12.0 | 35.0 | 5 | M6 x 45 | 33.5 | B | 099G102 |
| | 6 | 10 | 45 | 13.0 | 35.0 | 5 | M6 x 45 | 35.0 | B | 099G103 |
| | 8 | 12 | 60 | 18.0 | 47.0 | 6 | M8 x 60 | 150.0 | I | 099G121 |

* passende Abdeckkappe siehe Seite NEW-34

* Compatible cover cap screw see page NEW-34



X-ON Electronics

Largest Supplier of Electrical and Electronic Components

Click to view similar products for [Electrical Enclosure Accessories](#) category:

Click to view products by [Fath](#) manufacturer:

Other Similar products are found below :

[60121-06-028 C-325 Black](#) [71884-04-028 CM3-100 Black](#) [71884-18-028 LH43-200 Black](#) [71884-24-028 LH75-200 Black](#) [71885-01-028 CM6-150 Black](#) [72459-02-028 DM-3 BLACK](#) [81501-01-000 XPL, 9VB Black](#) [82402-01 PT-8 ALUM](#) [1335GSKT3](#) [14101FP-PK](#) [CB-1263-BT](#) [1611512-4](#) [HB-11498](#) [RC-7775](#) [HM BLACK PANEL](#) [61033-01-000](#) [115123-01-508 CN-RL RS](#) [115124-01-508 CN-XRL XRS](#) [115119-01-000 CN-RL RS](#) [115123-01-000 CN-RL RS](#) [60121-04-028 C-275 Black](#) [60128-01-072](#) [60222-01-028 CM6-225 Black](#) [60272-01-028 CM3-150 Black](#) [60851-01-028 CM69-120 Black](#) [62291-502-000-KEU-10-BLK](#) [62452-01-000 HML-9VB, EB Black](#) [71884-25-028 LH89-130 Black](#) [AXX2POSTBRCKT](#) [FUPMESK](#) [71884-23-028 LH75-130 Black](#) [1317GSKTSC](#) [8G813V40389](#) [DVA.1-10-15-M4-10-70](#) [DVC.1-60-49-60-M10-28-55](#) [DVC.1-15-8,5-15-M4-10-40](#) [DVC.1-20-12-30-M6-18-40](#) [DVC.1-30-18-25-M8-20-40](#) [DVC.1-35-31-15-M8-20-40](#) [DVC.1-35-31-15-M8-20-70](#) [DVC.1-75-60-40-M12-37-70](#) [DVC.2-30-22-20-M8-20-55](#) [DVC.2-40-30-25-M8-23-55](#) [DVC.2-75-60-40-M12-37-55](#) [DVC.2-21-16-22-M6-18-40](#) [DVC.2-40-20-48-M8-23-40](#) [DVC.2-40-32-50-M8-23-40](#) [DVC.2-20-14-19-M6-18-70](#) [DVC.2-25-18-20-M6-18-70](#) [DVC.3-20-14-20-M6-40](#) [DVC.3-20-14-30-M6-40](#)