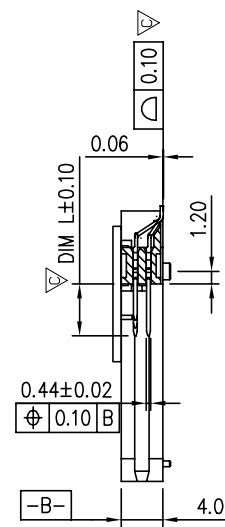
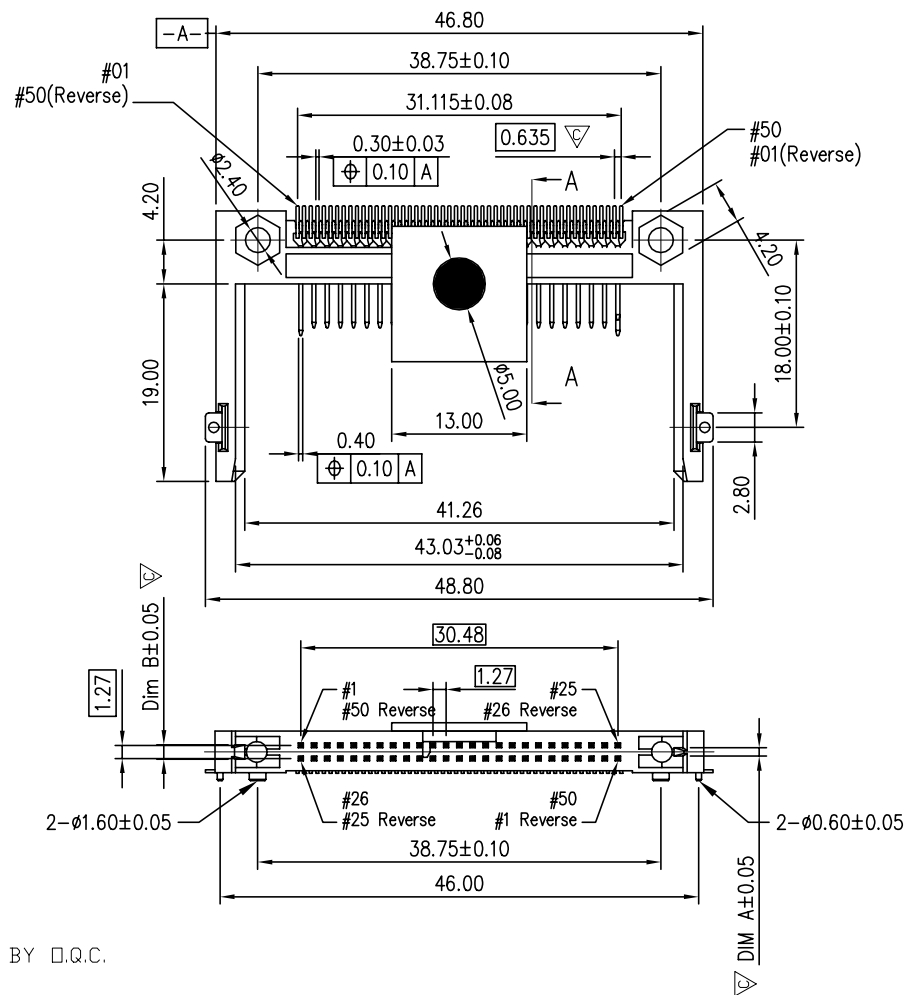
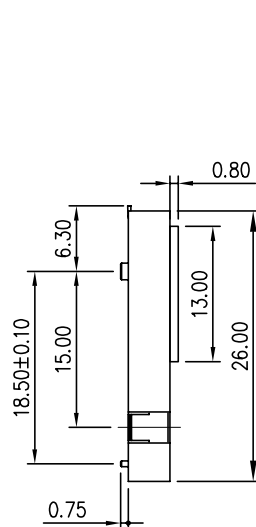


PROD NO  
SEE NOTE



SECTION A-A

NOTE: DIMENSIONAL MARK  $\nabla$  SHALL BE CHECKED BY D.Q.C.

PART NUMBER	DIMENSION A	DIMENSION B
10030920-X050 NORMAL TYPE	0.80	1.40
10030920-X150 REVERSE TYPE	1.40	0.80

PIN TYPE	DIM (L1,L2,L3)	PIN NO.
POWER	L3= 5.00mm	1, 13, 38, 50
GENERAL	L2= 4.25mm	ALL OTHER PINS
DETECT	L1= 3.50mm	25, 26

mat'l. code		surface <input checked="" type="checkbox"/> ISO1302	tolerance <input checked="" type="checkbox"/> ISO1101 <input checked="" type="checkbox"/> ISO 406	projection $\oplus$	product family CF
ltr ecn no dr date		tolerances unless otherwise specified		MM	title CF HEADER SLIM TYPE
A	T03-0176 J.C	08/06/03	angles		
B	T04-0387 A.C.	10/07/04	linear	0.XX±0.13	scale 1.5:1
C	T05-0055 A.C.	04/11/05	0°±2'	0.XXX±0.05	
D	T05-0230 A.C.	10/14/05	dr	JASMINE CHAIN	08/06/03
E	ELX-N-13488 ZK	11/13/12	enr	JASON HSU	08/06/03
			chr	JASON HSU	08/06/03
			appd	STERLING LIN	08/06/03
sheet index	revision sheet	E 1	E 2		



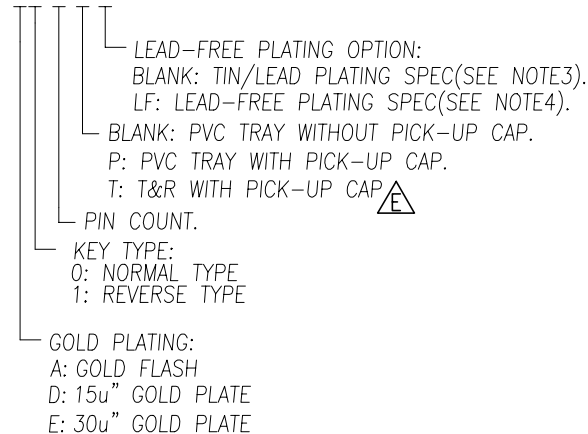
dwg no 10030920 sheet 1 of 2 size A4  
type Product Inspection Drawing

NOTES:

1. Materials:  
Housing: Vectra LCP E130i, UL94V-0, Color/Natural.  
Contact: Brass, C2680R-H, t=0.465mm.  
Solderable Holddown: Brass, C2680R-H, t=0.30mm.  
Housing of Pick-Up Cap: Vectra LCP E130i, UL94V-0, Color/Natural.
2. Specification:  
Product Spec: GS-12-240.  
Packaging Spec: GS-14-933.
3. Tin/Lead Plating Spec:  
Contact: Under Plated 50u" Min Nickel All Over,  
100u" Min Tin/Lead in Solder Tail Area,  
Selective Gold Plating in Contact Area.  
Solderable Holddown: Under Plated 50u" Min Nickel,  
Plated 100u"Min Tin/Lead All Over.
4. Lead-Free Plating Spec:  
Contact: Under Plated 50u" Min Nickel All Over,  
100u" Min Pure Matte Tin in Solder Tail Area,  
Selective Gold Plating in Contact Area.  
Solderable Holddown: Under Plated 50u" Min Nickel,  
Plated 100u"Min Pure Matte Tin All Over.
5. The Housing Will Withstand Exposure to 260°C Peak Temperature For 10 Seconds In A Convection, IR Or Vaper Phase Reflow Oven.
6. This Product (10030920-XXXXXLF) Meets the European Union Directive as Described in GS-22-008.

7. Part Number Description:

P/N: 10030920-XX50XLF



mat'l. code		surface	tolerance	projection	product family	
ISO1302		ISO1101	ISO 406		CF	
itr		ecn no		date		title
E						CF HEADER SLIM TYPE
angles		0.X±0.30		MM		scale 1.5:1
lineat		0.XX±0.13				
0°±2'		0.XXX±0.05				
dr		JASMINE CHAIN	08/06/03	dwg no		sheet 2 of 2
enr		JASON HSU	08/06/03	10030920		A4
chr		JASON HSU	08/06/03	type		Product Inspection Drawing
appd		STERLING LIN	08/06/03			
sheet	revision					
index	sheet					

## X-ON Electronics

Largest Supplier of Electrical and Electronic Components

*Click to view similar products for [fct electronics manufacturer](#):*

Other Similar products are found below :

[F2W2SC-1002](#) [FMK3-K201](#) [FT2W2SC-K121](#) [K761](#) [24P104C24P1-006](#) [SDB15P159S-060](#) [SHD15P15S-012](#) [SHD15P15S-036](#) [FU27W2S7-K121](#) [2761](#) [ICD040GVP163D-03](#) [ICD040GVP163D-25](#) [10056427-1050011LF](#) [155298-002](#) [155286-001](#) [172704-0016](#) [173112-0413](#)  
[173109-0036](#) [111-0098-994](#) [173107-0568](#) [FM24W7P-K120](#) [FWDR15S](#) [RB09P09P-006](#) [FLW0915S7](#) [FT2W2PC-K120](#) [25P203C25P2-003](#)  
[K1003](#) [10112041-2020HLF](#) [173112-0077](#) [173112-0074](#) [173114-0092](#) [10046971-019LF](#) [10093084-2010LF](#) [FWDR09S1](#) [SHD26P26S-012](#)  
[FKT5](#) [FWDR15P](#) [74977-101001LF](#) [FM25W3PA-K120](#) [173112-0073](#) [151-2811-010](#) [91910-21169LF](#) [SHD15P15S-060](#) [FKC3GNME](#) [CT50-78P7](#) [HM2R89PA8100N9LF](#) [FM27W2SA-K121](#) [173113-0152](#) [73231-1321](#) [168-2829-034](#)