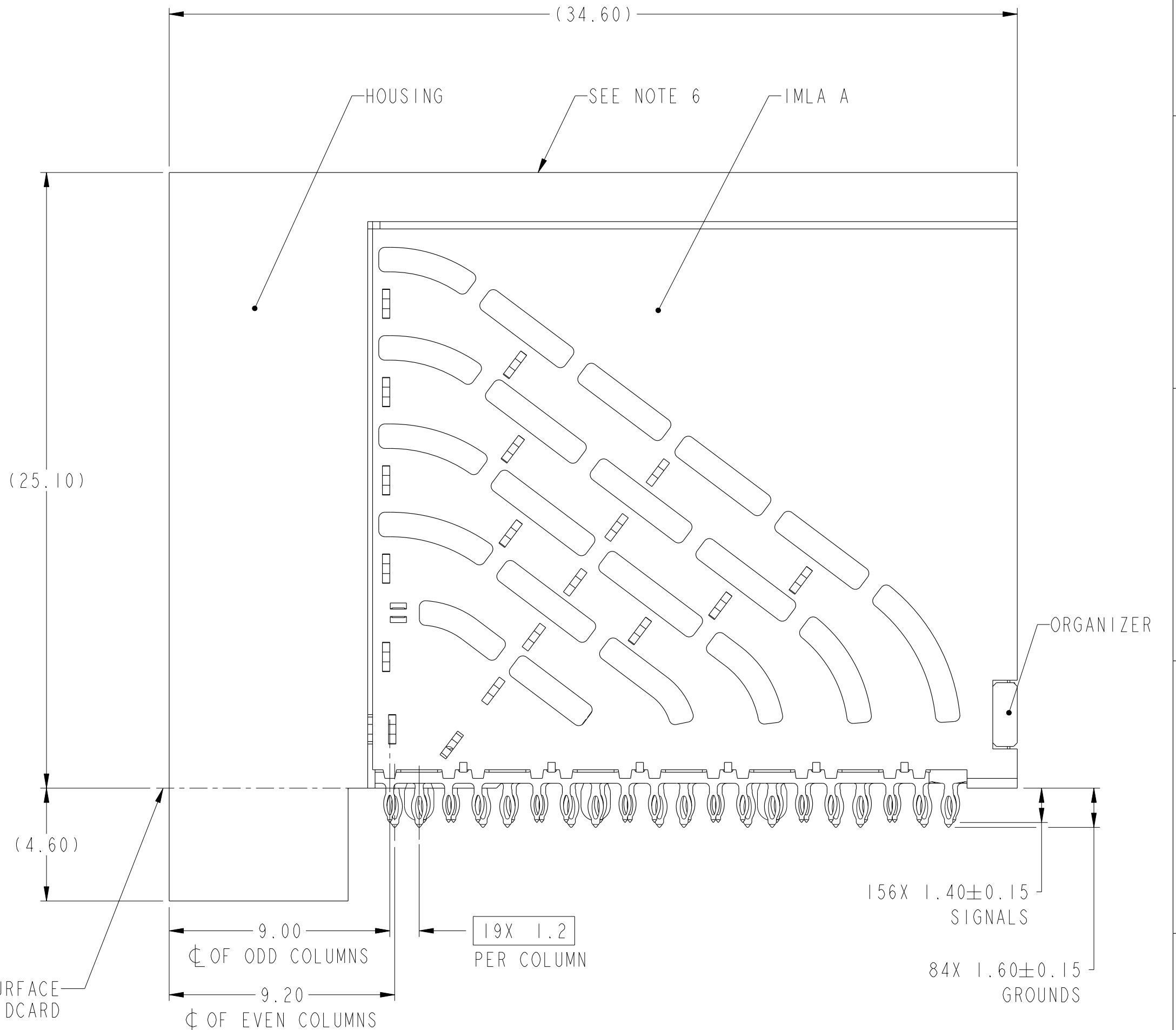
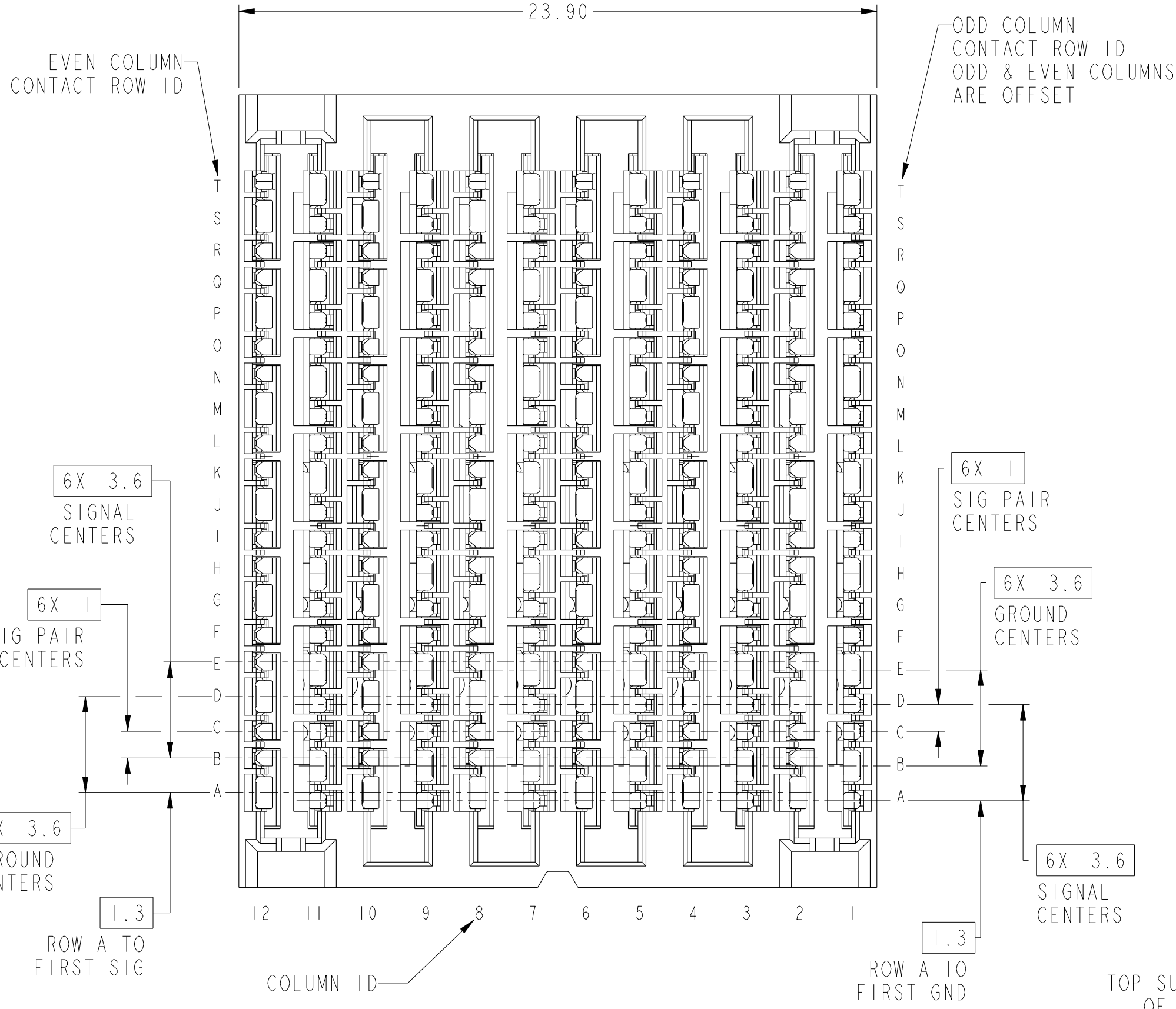


PRODUCT NUMBER
SEE TABLE



10123159-101LF
STANDARD MATE RECEPTACLE
SCALE 6:1

Copyright FCI.

spec ref	SEE NOTES	dr	SHU CHEN	2013-10-17	projection	MM	size	A2	scale	6:1												
tolerance std	TOLERANCES UNLESS OTHERWISE SPECIFIED	eng	HEAVEN CEN	2013-10-17			ecn no	rel level	In Work	rev												
ASME Y14.5M		chr	D JOHnescu	2014-03-12																		
surface	<table border="1"> <tr> <td>linear</td> <td>0.X</td> <td>±.3</td> </tr> <tr> <td></td> <td>0.XX</td> <td>±.10</td> </tr> <tr> <td></td> <td>0.XXX</td> <td>±.050</td> </tr> <tr> <td>angular</td> <td>0°</td> <td>±°</td> </tr> </table>	linear	0.X	±.3		0.XX	±.10		0.XXX	±.050	angular	0°	±°	appr			product family	ExaMAX	rel level	In Work	rev	7
linear	0.X	±.3																				
	0.XX	±.10																				
	0.XXX	±.050																				
angular	0°	±°																				
				title ExaMAX R.A. RECEPTACLE ASSY 6 PR, 240 POS, 12 IMLA, 24mm		dwg no 10123159		Product - Customer Drw		sheet 1 of 10												

1 2 3 4 5 6 7 8

A

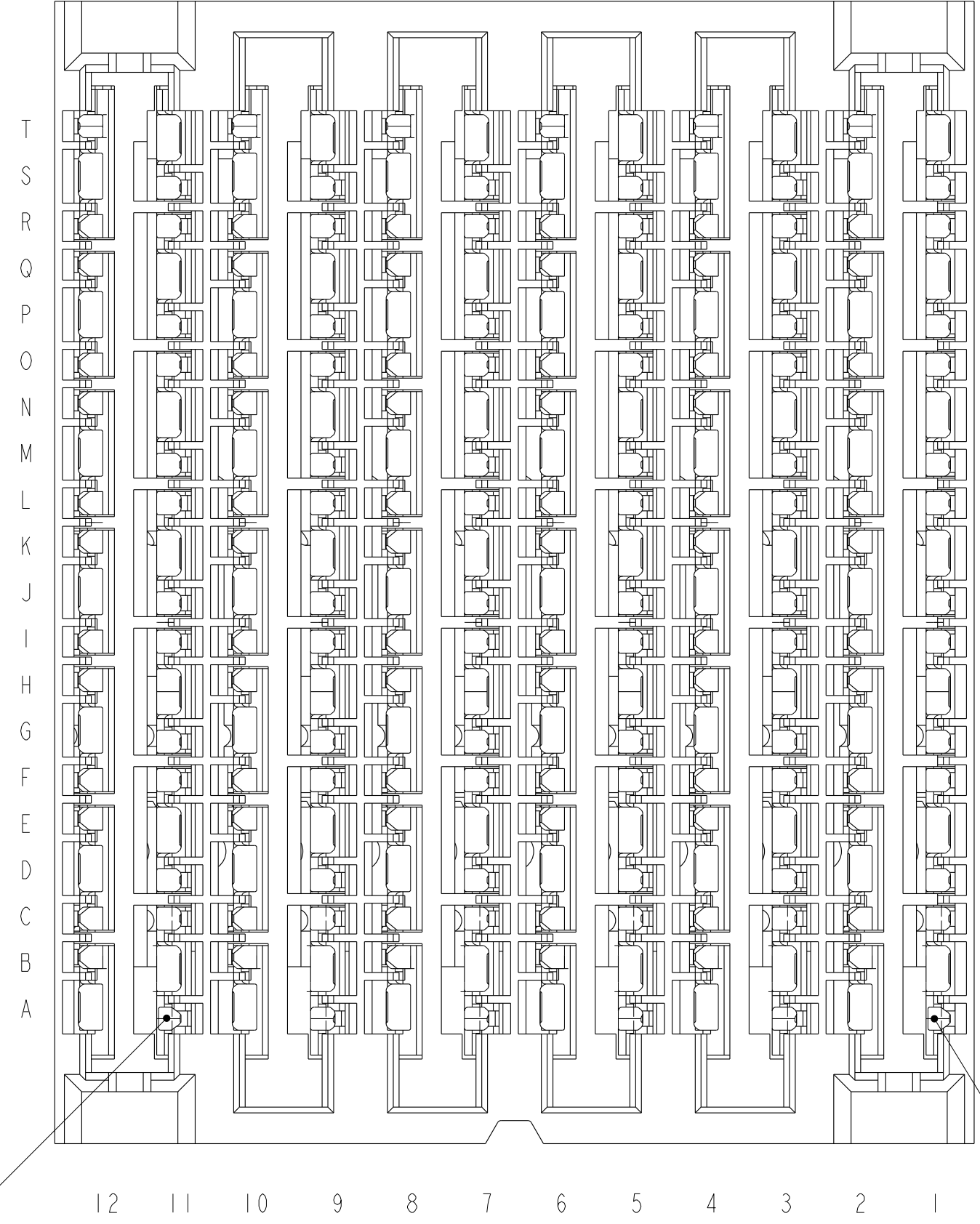
B

C

D

E

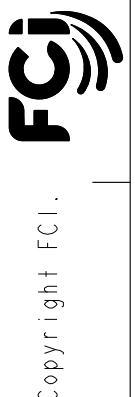
F



ADVANCED MATE POSITION A11
SEE NOTE 13

ADVANCED MATE POSITION A1
SEE NOTE 13

10123159-201LF
ADVANCED MATE RECEPTACLE
ADVANCED MATE POSITIONS ARE A1 AND A11 ONLY
FOR ALL DIMENSIONS SEE 10123159-101LF ON SHEET 1
SCALE 7:1



spec ref	SEE NOTES	dr	SHU CHEN	2013-10-17	projection	MM	size	A2	scale	7:1							
tolerance std	TOLERANCES UNLESS OTHERWISE SPECIFIED	eng	HEAVEN CEN	2013-10-17			ecn no										
ASME Y14.5M		chr	D JOHNESCU	2014-03-12			rel level	In Work									
surface	<table border="1"> <tr> <td rowspan="3"> </td> <td rowspan="3">linear</td> <td>0.X</td> <td>±.3</td> </tr> <tr> <td>0.XX</td> <td>±.10</td> </tr> <tr> <td>0.XXX</td> <td>±.050</td> </tr> <tr> <td></td> <td>angular</td> <td>0°</td> <td>±°</td> </tr> </table>		linear	0.X	±.3	0.XX	±.10	0.XXX	±.050		angular	0°	±°		title ExgMAX R.A. RECEPTACLE ASSY 6 PR, 240 POS, 12 IMLA, 24mm	dwg no 10123159	rev 7
	linear			0.X	±.3												
				0.XX	±.10												
		0.XXX	±.050														
	angular	0°	±°														
		www.fci.com	cat. no.	SEE TABLE	Product - Customer Drw	sheet 2 of 10											

1 2 3 4 5 6 7 8

1 2 3 4 5 6 7 8

A

B

C

D

E

F

A

B

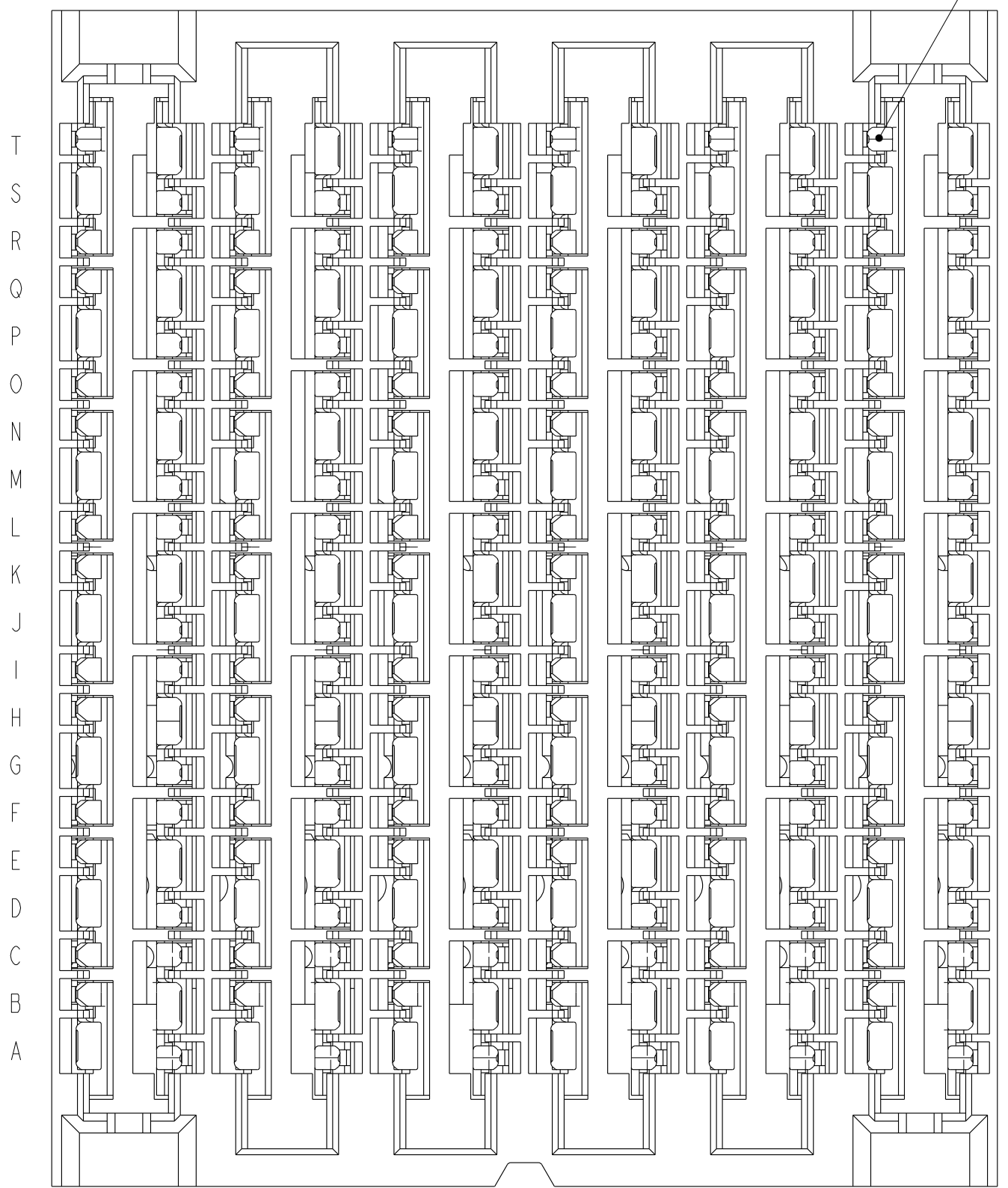
C

D

E

F

SHORT DETECT
POSITION T2
SEE NOTE 14



12 11 10 9 8 7 6 5 4 3 2 1

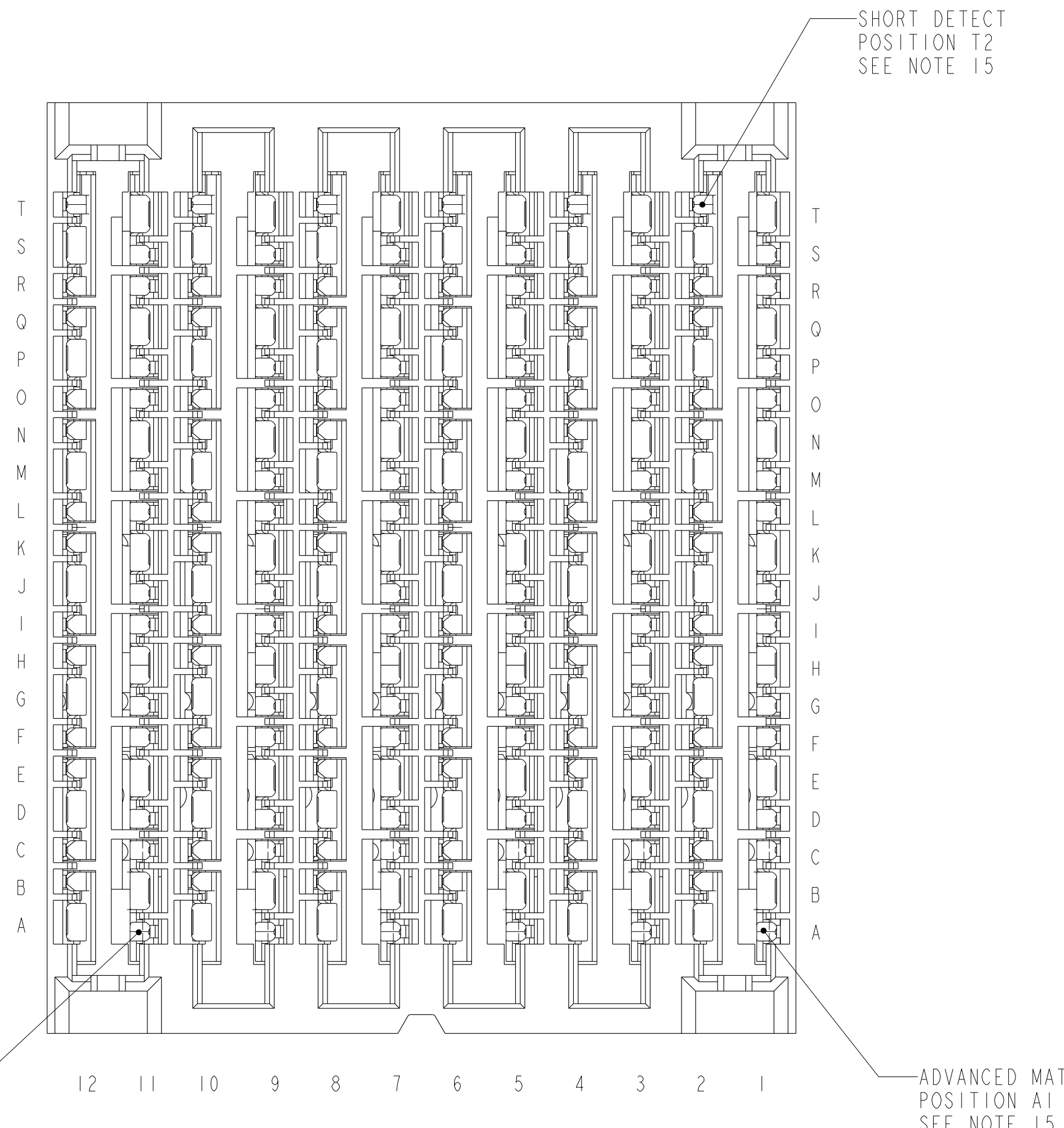
10123159-301LF
SHORT DETECT RECEPTACLE
SHORT DETECT POSITION IS T2
FOR ALL DIMENSIONS SEE 10123159-101LF ON SHEET 1
SCALE 7:1



Copyright FCI.

spec ref	SEE NOTES	dr	SHU CHEN	2013-10-17	projection	MM	size	A2	scale	7:1
tolerance std	TOLERANCES UNLESS OTHERWISE SPECIFIED	eng	HEAVEN CEN	2013-10-17			ecn no	rel level	In Work	rev
ASME Y14.5M		chr	D JOHNSCU	2014-03-12						
surface		linear	0.X	±.3		title ExdMAX R.A. RECEPTACLE ASSY 6 PR, 240 POS, 12 IMLA, 24mm	dwg no 10123159	rel level In Work	sheet 3 of 10	rev 7
		0.XX	±.10							
		0.XXX	±.050							
	angular	0°	±°	www.fci.com	cat. no.	SEE TABLE	Product - Customer Drw			

1 2 3 4 5 6 7 8

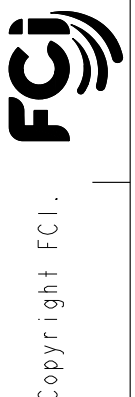


ADVANCED MATE
POSITION A11
SEE NOTE 15

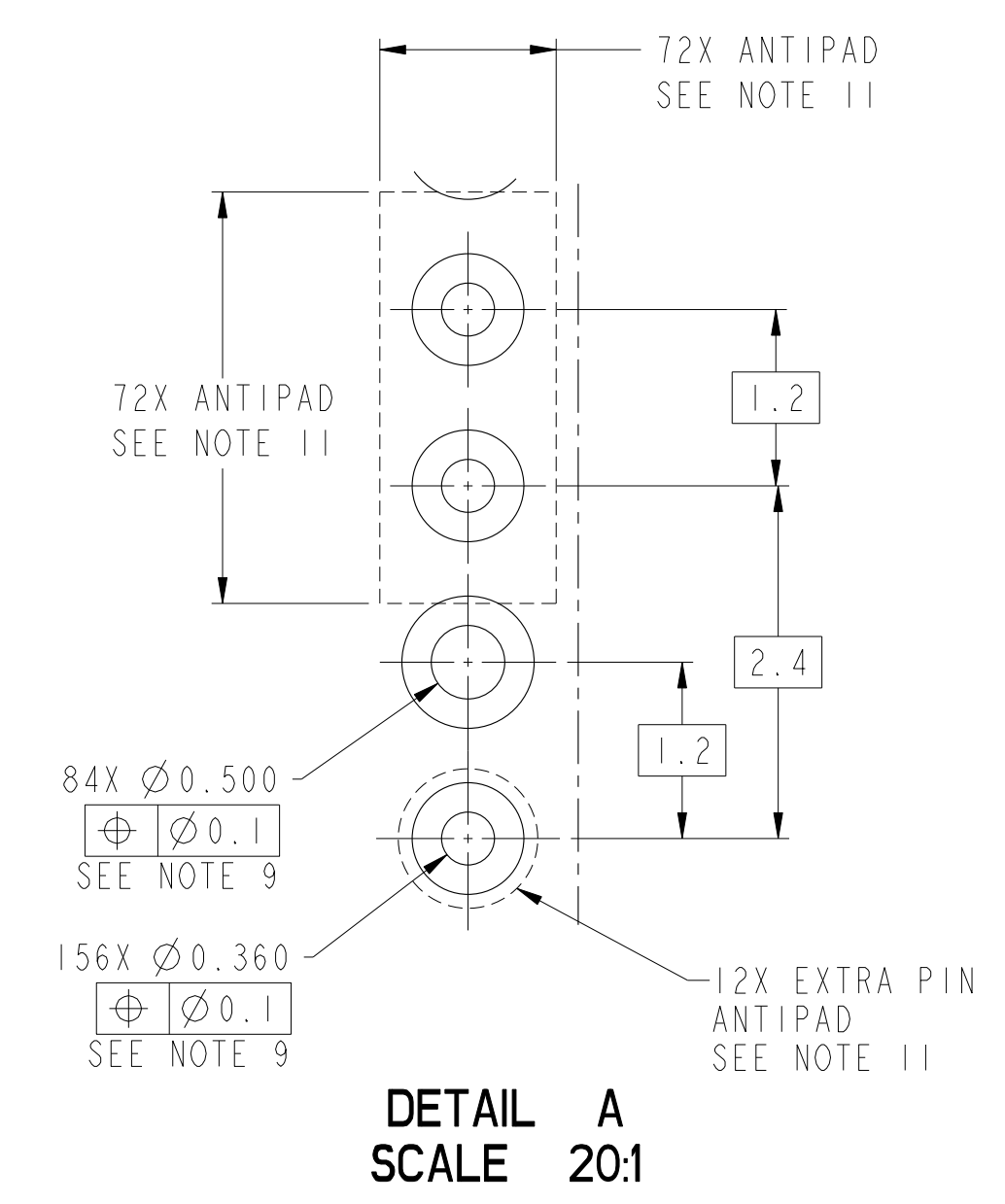
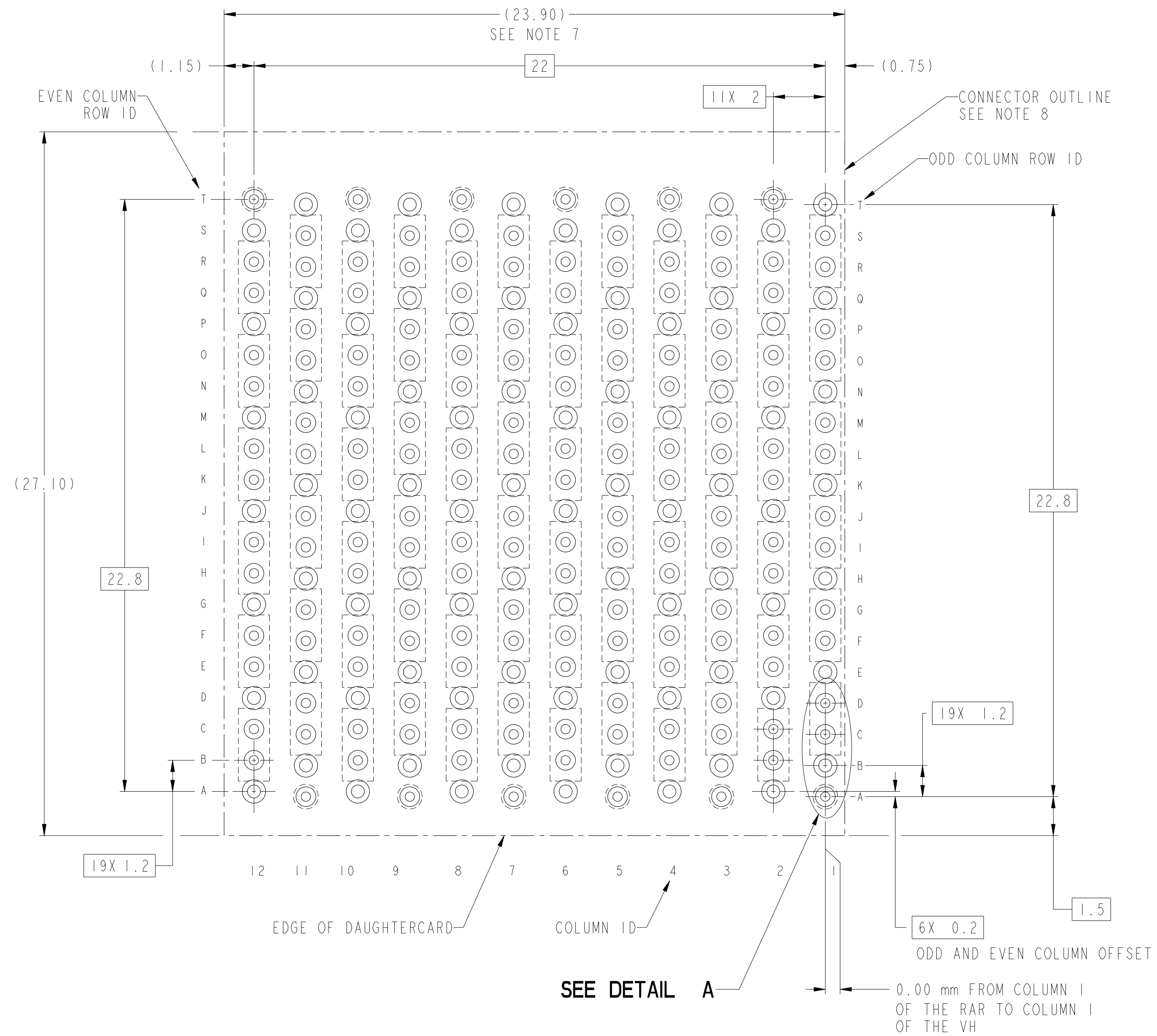
SHORT DETECT
POSITION T2
SEE NOTE 15

ADVANCED MATE
POSITION A1
SEE NOTE 15

10123159-401LF
ADVANCED MATE/SHORT DETECT RECEPTACLE
ADVANCED MATE POSITIONS ARE POSITIONS A1 AND A11 ONLY
SHORT DETECT POSITION IS T2
FOR ALL DIMENSIONS SEE 10123159-101LF ON SHEET 1
SCALE 7:1

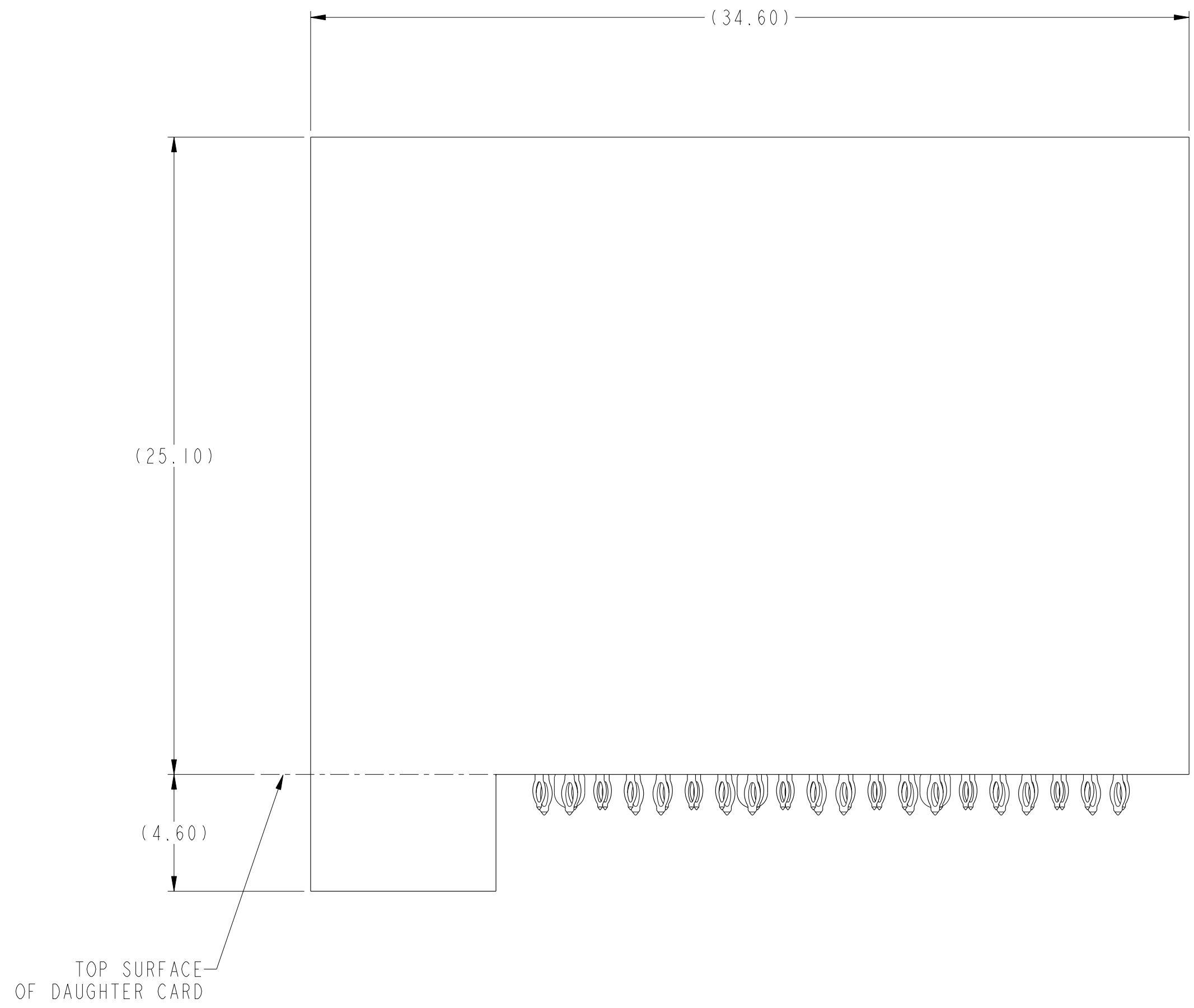
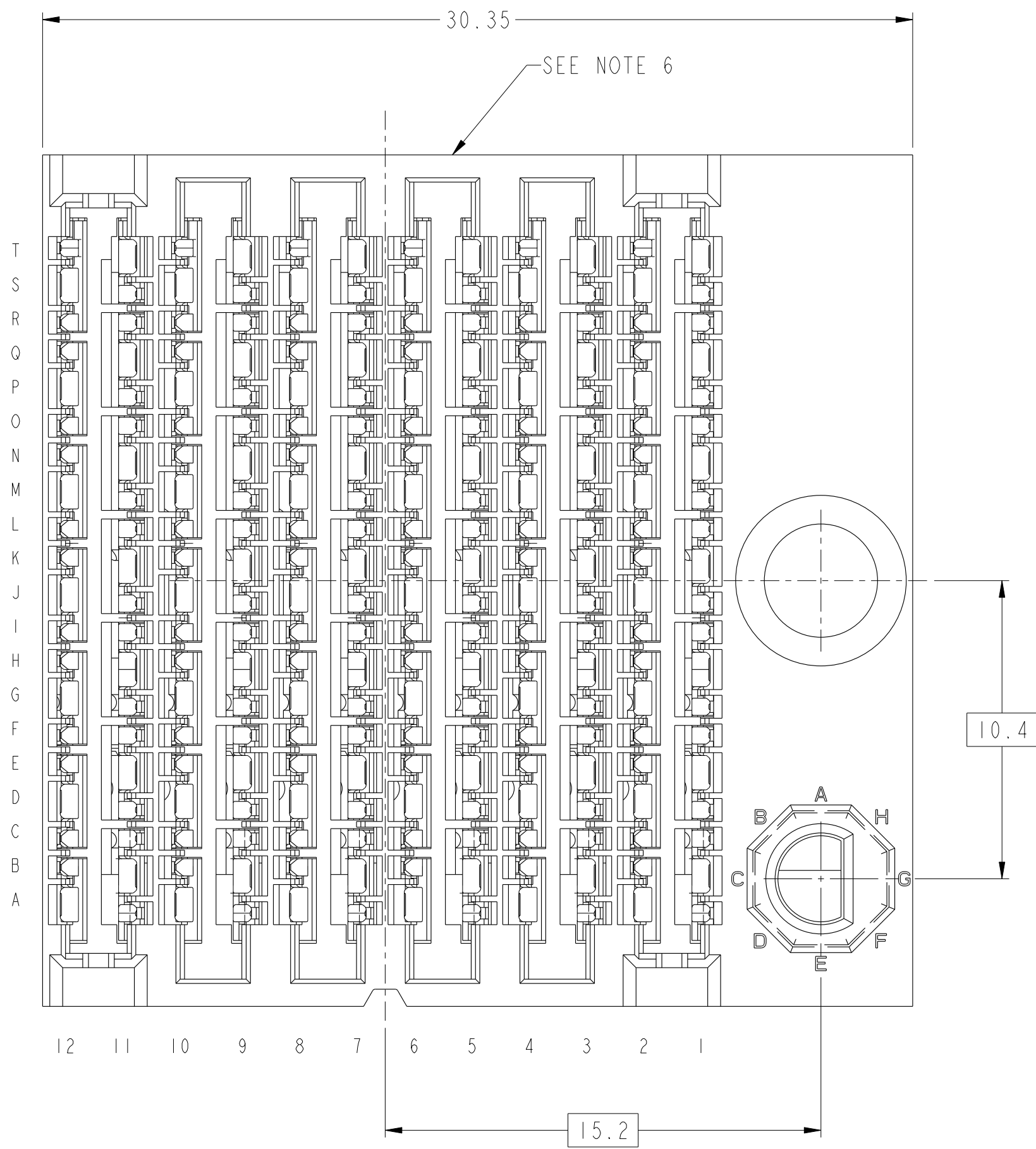


spec ref	SEE NOTES	dr	SHU CHEN	2013-10-17	projection	MM	size	A2	scale	7:1
tolerance std	TOLERANCES UNLESS OTHERWISE SPECIFIED	eng	HEAVEN CEN	2013-10-17		← →	ecn no	rel level	In Work	rev
ASME Y14.5M		chr	D JOHNSCU	2014-03-12						
surface	✓	linear	0.X	±.3	 title ExgMAX R.A. RECEPTACLE ASSY 6 PR, 240 POS, 12 IMLA, 24mm www.fci.com cat. no. SEE TABLE Product - Customer Drw	dwg no 10123159	rev 7			
			0.XX	±.10						
			0.XXX	±.050						
		angular	0°	±°	sheet 4 of 10					



**10123159-X01
RECOMMENDED PCB LAYOUT
COMPONENT SIDE
NOTES 7, 8, 9, & 11
SCALE 8:1**

spec ref	SEE NOTES	dr	SHU CHEN	2013-10-17	projection	MM	size	A2	scale	8:1										
tolerance std	TOLERANCES UNLESS OTHERWISE SPECIFIED	eng	HEAVEN CEN	2013-10-17			ecn no	rel level	In Work	rev										
ASME Y14.5M		chr	D JOHNSCU	2014-03-12																
surface	<table border="1"> <tr> <td>linear</td> <td>0.X</td> <td>±.3</td> </tr> <tr> <td></td> <td>0.XX</td> <td>±.10</td> </tr> <tr> <td></td> <td>0.XXX</td> <td>±.050</td> </tr> <tr> <td>angular</td> <td>0°</td> <td>±°</td> </tr> </table>	linear	0.X	±.3		0.XX	±.10		0.XXX	±.050	angular	0°	±°	www.fci.com	cat. no.	-	product family	-	Product - Customer Drw	sheet 5 of 10
linear	0.X	±.3																		
	0.XX	±.10																		
	0.XXX	±.050																		
angular	0°	±°																		
		title	ExqMAX R.A. RECEPTACLE ASSY		dwg no	10123159		7												

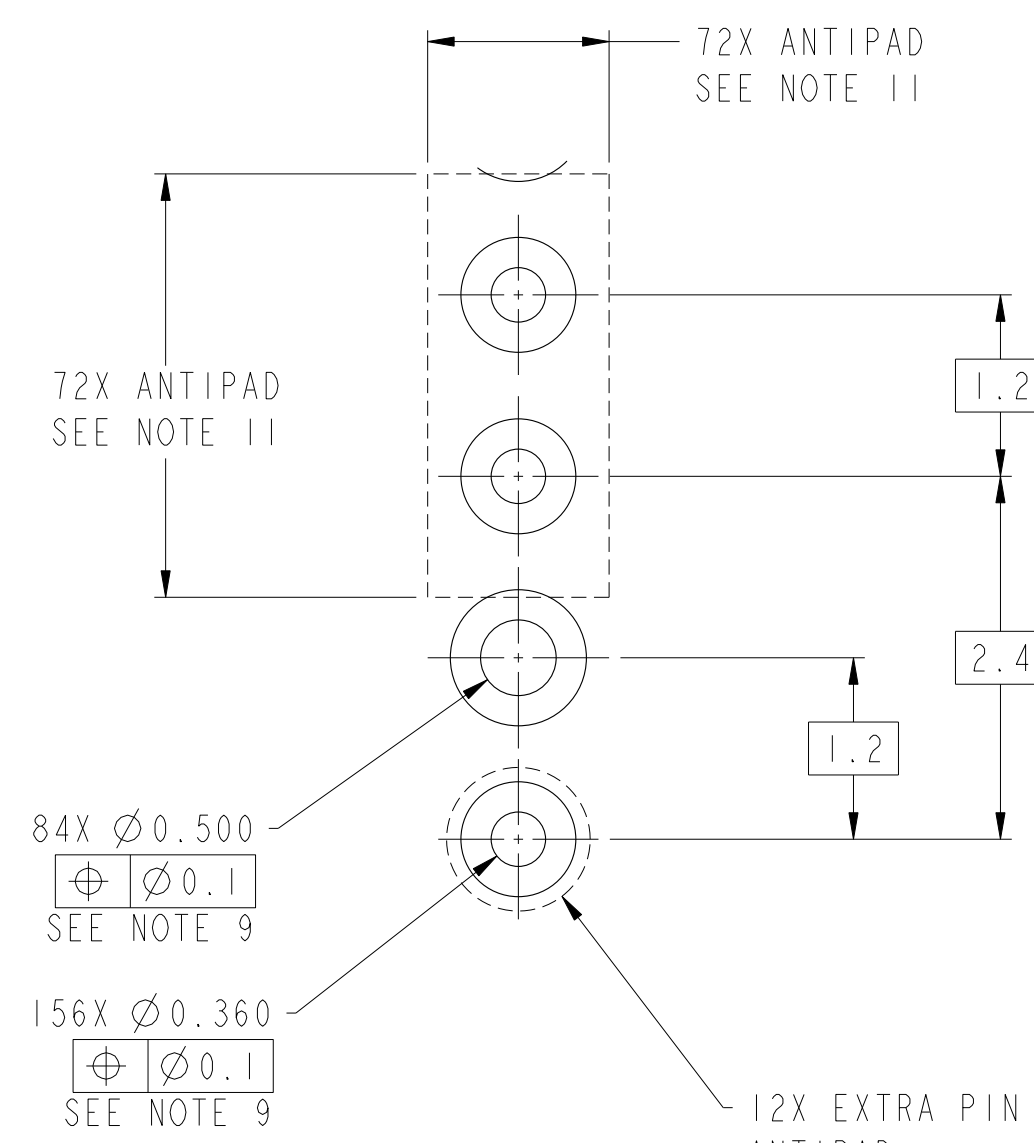
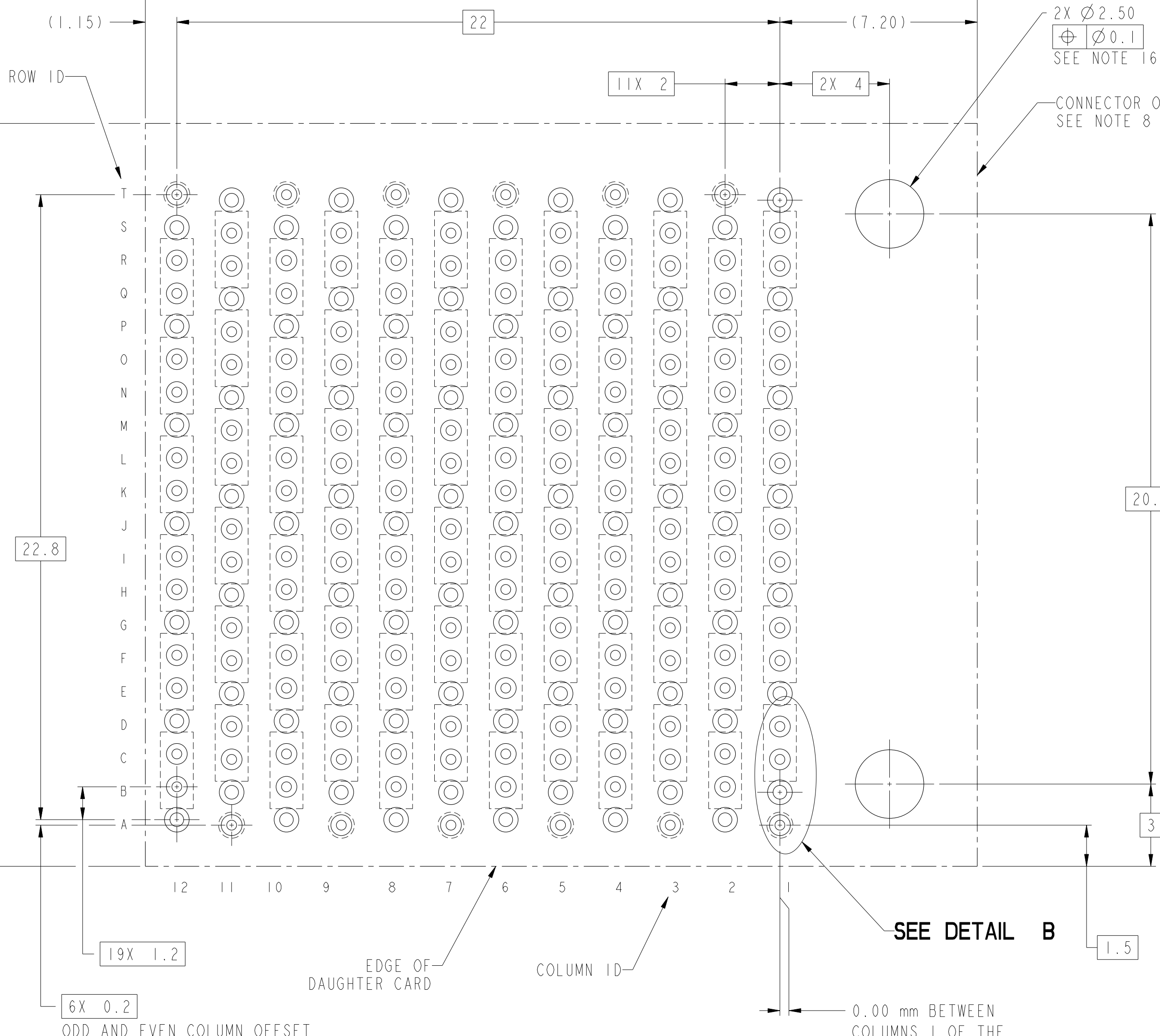


10123159-X1ALF THRU 10123159-X1JLF
 RIGHT GUIDANCE
 FOR ALL OTHER DIMENSIONS SEE 10123159-101LF ON SHEET 1
 SCALE 6:1

spec ref	SEE NOTES	dr	SHU CHEN	2013-10-17	projection	MM	size	A2	scale	6:1								
tolerance std	TOLERANCES UNLESS OTHERWISE SPECIFIED	eng	HEAVEN CEN	2013-10-17			ecn no	rel level	In Work	rev								
ASME Y14.5M		chr	D JOHNESECU	2014-03-12							product family	ExdMAX						
surface	<table border="1"> <tr> <td>linear</td> <td>0.X</td> <td>±.3</td> </tr> <tr> <td></td> <td>0.XX</td> <td>±.10</td> </tr> <tr> <td></td> <td>0.XXX</td> <td>±.050</td> </tr> <tr> <td>angular</td> <td>0°</td> <td>±°</td> </tr> </table>	linear	0.X	±.3		0.XX	±.10		0.XXX	±.050	angular	0°	±°		title ExdMAX R.A. RECEPTACLE ASSY 6 PR, 240 POS, 12 IMLA, 24mm		dwg no 10123159	rev 7
linear	0.X	±.3																
	0.XX	±.10																
	0.XXX	±.050																
angular	0°	±°																
		www.fci.com	cat. no.	SEE TABLE	Product - Customer Drw	sheet 6 of 10												

Copyright FCI.

A
B
C
D
E
F



DETAIL B
SCALE 20:1

**10123159-X1ALF THRU -X1JLF
RECOMMENDED PCB LAYOUT
COMPONENT SIDE
NOTES 8, 9, 11 & 16
SCALE 8:1**

spec ref	SEE NOTES	dr	SHU CHEN	2013-10-17	projection	MM	size	A2	scale	1:1											
tolerance std	TOLERANCES UNLESS OTHERWISE SPECIFIED	eng	HEAVEN CEN	2013-10-17			ecn no	rel level	In Work	rev											
ASME Y14.5M		chr	D JOHNSCU	2014-03-12																	
surface	<table border="1"> <tr> <td>linear</td> <td>0.X</td> <td>±.3</td> </tr> <tr> <td></td> <td>0.XX</td> <td>±.10</td> </tr> <tr> <td></td> <td>0.XXX</td> <td>±.050</td> </tr> <tr> <td>angular</td> <td>0°</td> <td>±°</td> </tr> </table>	linear	0.X	±.3		0.XX	±.10		0.XXX	±.050	angular	0°	±°	appr		product family	-	rel level	In Work	rev	7
linear	0.X	±.3																			
	0.XX	±.10																			
	0.XXX	±.050																			
angular	0°	±°																			
				title ExgMAX R.A. RECEPTACLE ASSY 6 PR, 240 POS, 12 IMLA, 24mm		dwg no 10123159		Product - Customer Drw		sheet 7 of 10											

Copyright FCI.
FCI

1 2 3 4 5 6 7 8

A

B

C

D

E

F

A

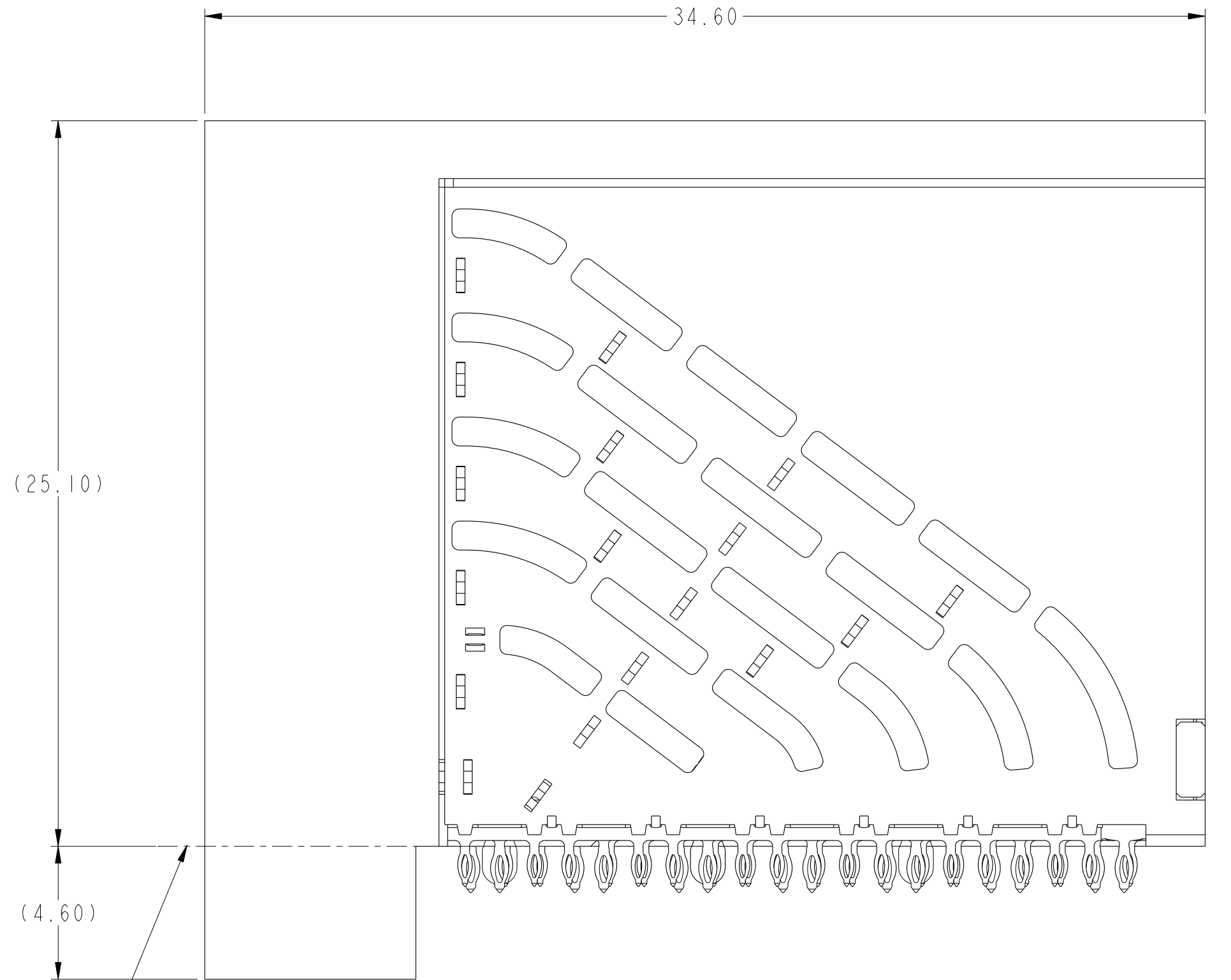
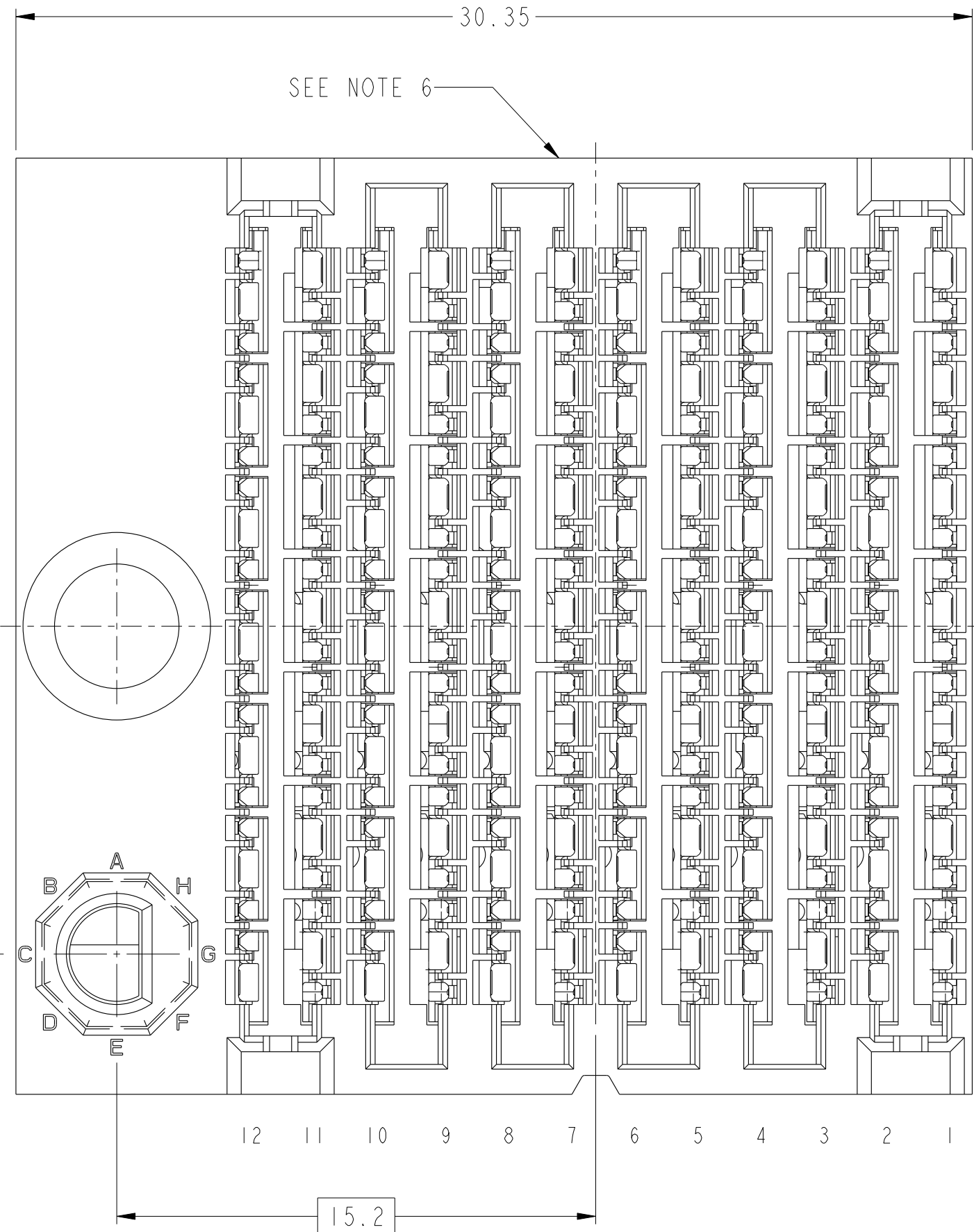
B

C

D

E

F



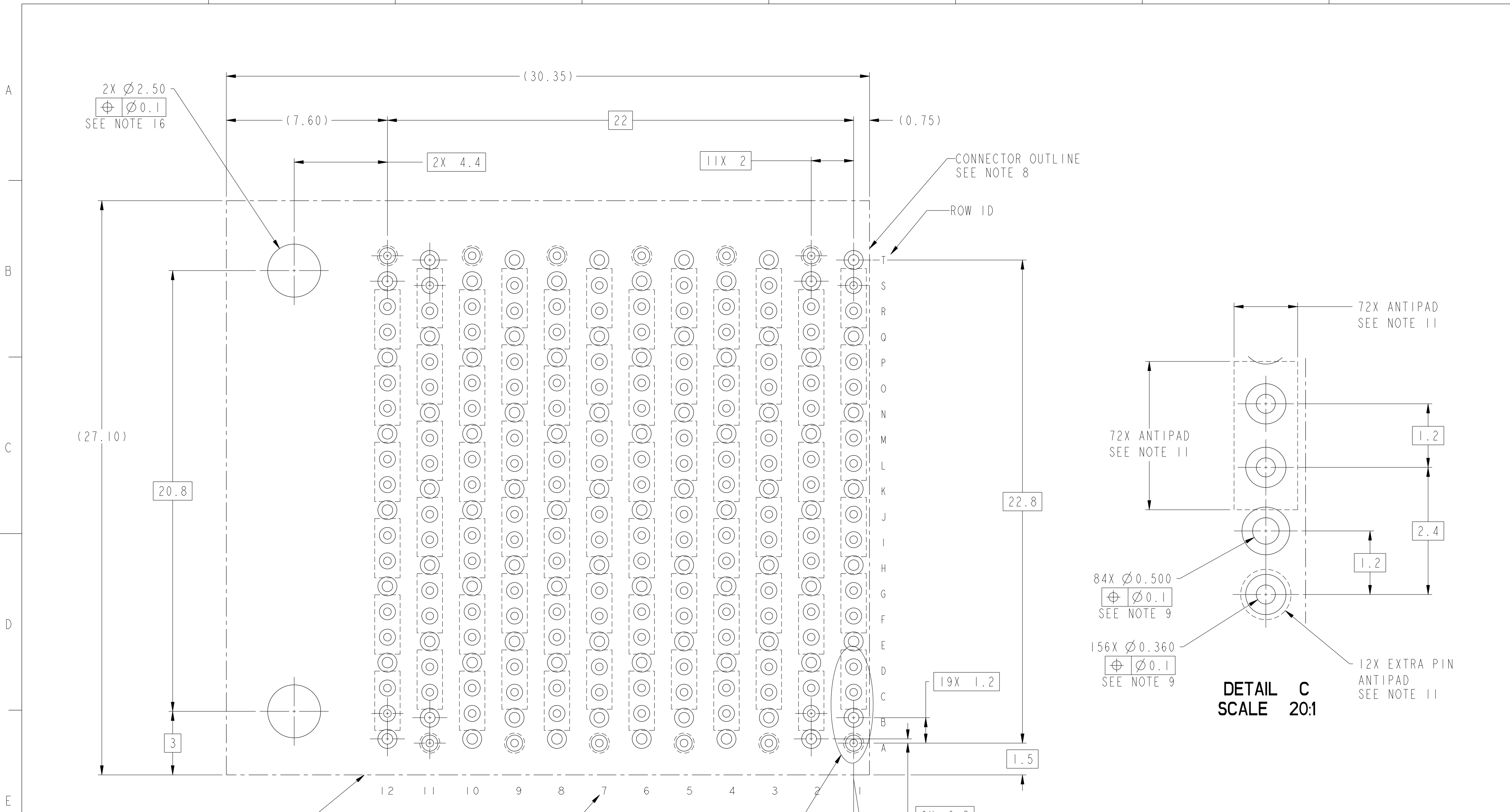
TOP SURFACE OF DAUGHTER CARD

10123159-X2ALF THRU 10123159-X2JLF
LEFT GUIDANCE
FOR ALL OTHER DIMENSIONS SEE 10123159-101LF ON SHEET 1
SCALE 6:1

Copyright FCI.
FCI

spec ref	SEE NOTES	dr	SHU CHEN	2013-10-17	projection	MM	size	A2	scale	6:1								
tolerance std	TOLERANCES UNLESS OTHERWISE SPECIFIED	eng	HEAVEN CEN	2013-10-17			ecn no	rel level	In Work	rev								
ASME Y14.5M		chr	D JOHnescu	2014-03-12							product family	ExaMAX						
surface	<table border="1"> <tr> <td>linear</td> <td>0.X</td> <td>±.3</td> </tr> <tr> <td></td> <td>0.XX</td> <td>±.10</td> </tr> <tr> <td></td> <td>0.XXX</td> <td>±.050</td> </tr> <tr> <td>angular</td> <td>0°</td> <td>±°</td> </tr> </table>	linear	0.X	±.3		0.XX	±.10		0.XXX	±.050	angular	0°	±°		title ExaMAX R.A. RECEPTACLE ASSY 6 PR, 240 POS, 12 IMLA, 24mm		dwg no 10123159	rev 7
linear	0.X	±.3																
	0.XX	±.10																
	0.XXX	±.050																
angular	0°	±°																
		www.fci.com	cat. no.	SEE TABLE	Product - Customer Drw	sheet 8 of 10												

1 2 3 4 5 6 7 8



10123159-X2ALF THRU -X2JLF
RECOMMENDED PCB LAYOUT
COMPONENT SIDE
NOTES 8, 9, 11 & 16
SCALE 8:1

spec ref	SEE NOTES	dr	SHU CHEN	2013-10-17	projection	MM	size	A2	scale	8:1												
tolerance std	TOLERANCES UNLESS OTHERWISE SPECIFIED	eng	HEAVEN CEN	2013-10-17			ecn no	rel level	In Work	rev												
ASME Y14.5M		chr	D JOHNESCU	2014-03-12																		
surface	<table border="1"> <tr> <td>linear</td> <td>0.X</td> <td>±.3</td> </tr> <tr> <td></td> <td>0.XX</td> <td>±.10</td> </tr> <tr> <td></td> <td>0.XXX</td> <td>±.050</td> </tr> <tr> <td>angular</td> <td>0°</td> <td>±°</td> </tr> </table>	linear	0.X	±.3		0.XX	±.10		0.XXX	±.050	angular	0°	±°	appr			product family		cat. no.		Product - Customer Drw	sheet 9 of 10
linear	0.X	±.3																				
	0.XX	±.10																				
	0.XXX	±.050																				
angular	0°	±°																				
				ExqMAX R.A. RECEPTACLE ASSY 6 PR, 240 POS, 12 IMLA, 24mm		dwg no 10123159		rev 7														



Copyright FCI.

10123159 - Y Y Y L F

ASSEMBLY PART NUMBER	DESCRIPTION	STATUS
10123159-1YYLF	STANDARD MATE	TOOLED
10123159-2YYLF	ADVANCED MATE	NOT TOOLED
10123159-3YYLF	SHORT DETECT	
10123159-4YYLF	ADVANCED MATE & SHORT DETECT	

MODULE DESCRIPTION	DESIGNATION REPRESENTED IN DASH NUMBER										STATUS	BASE MODULE
	1A	1B	1C	1D	1E	1F	1G	1H	1J (NO KEY)			
WITHOUT END GUIDES MODULE (SEE SHEET 1)	01										TOOLED	
RIGHT GUIDANCE MODULE (SEE SHEET 6)											NOT TOOLED	
LEFT GUIDANCE MODULE (SEE SHEET 8)											NOT TOOLED	

NOTES:

- ① - CONNECTOR MATERIALS:
HOUSING: HIGH TEMP THERMOPLASTIC, BLACK, UL94-V0
IMLA PLASTIC: HIGH TEMP THERMOPLASTIC, BLACK, UL94-V0
CONTACT: COPPER ALLOY
ORGANIZER: HIGH TEMP THERMOPLASTIC, BLACK, UL94-V0
- 2 - CONTACT PLATING:
SEPARABLE INTERFACE:
PERFORMANCE-BASED PLATING, QUALIFIED TO MEET THE REQUIREMENTS OF FCI PRODUCT SPECIFICATION GS-12-1096 INCLUDING TELCORDIA GR-1217-CORE (NOVEMBER 1995) CENTRAL OFFICE TEST SEQUENCE

PRESS-FIT TAILS: TIN OVER NICKEL (LEAD FREE)
- 3 - PRODUCT SPECIFICATION: GS-12-1096
- 4 - APPLICATION SPECIFICATION GS-20-0361.
- 5 - PACKAGING MEETS GS-14-920 LEAD FREE LABELING SPECIFICATION.
- ⑥ - PRODUCT MARKING, (PROTOTYPE, PART NUMBER & LOT CODE), ON THIS SURFACE.
- ⑦ - THE MINIMUM CENTERLINE SPACING BETWEEN ADJACENT MODULES IS 24.0mm FOR -X01
- ⑧ - CONNECTOR OUTLINE MAY BE SCREEN PRINTED ONTO CUSTOMER PCB TO BE USED AS A GUIDE FOR MANUAL CONNECTOR PLACEMENT.
- ⑨ - REFER TO CUSTOMER DRAWING 10119933 FOR INFORMATION ON PCB HOLE DIAMETERS AND PLATING OPTIONS
- 10 - THIS PRODUCT MEETS THE EUROPEAN UNION DIRECTIVES & OTHER COUNTRY REGULATIONS AS DESCRIBED IN GS-47-0004.
- ⑪ - REFER TO APPLICATION SPECIFICATION FOR TRACE ROUTING EXAMPLES THAT INCLUDE DIMENSIONS FOR ANTIPADS, TRACE WIDTH, TRACE SPACING, ETC.
- 12 - THE HOUSING WILL WITHSTAND EXPOSURE TO 260° C FOR 10-30 SECONDS IN A CONVECTION, INFRA-RED OR VAPOR PHASE REFLOW OVEN.
- ⑬ - THE ADVANCED MATE RECEPTACLE, 10123159-2XXLF, WHEN MATED WITH AN ADVANCED MATE VERTICAL HEADER, 10123162-2XXLF, OR ADVANCED MATE RIGHT-ANGLE HEADER, 10124560-2XXLF, WILL PROVIDE 2 PAIRS OF MATING CONTACTS THAT MATE 0.75mm BEFORE THE REMAINDER OF THE SIGNAL AND GROUND CONTACTS.

- ⑭ - THE SHORT DETECT RECEPTACLE, 10123159-3XXLF, WHEN MATED WITH AN STANDARD MATE VERTICAL HEADER, 10123162-1XXLF, OR THE STANDARD MATE RIGHT-ANGLE HEADER, 10124560-1XXLF, WILL PROVIDE 1 PAIR OF MATING CONTACTS THAT MATE 1.00mm AFTER THE REMAINDER OF THE SIGNAL AND GROUND CONTACTS.
- ⑮ - THE ADVANCE MATE/SHORT DETECT RECEPTACLE, 10123159-4XXLF, WHEN MATED WITH AN ADVANCED MATE VERTICAL HEADER, 10123162-2XXLF, OR THE ADVANCED MATE RIGHT-ANGLE HEADER, 10124560-2XXLF, WILL PROVIDE 2 PAIRS OF MATING CONTACTS THAT MATE 0.75mm BEFORE THE REMAINDER OF THE SIGNAL AND GROUND CONTACTS AND 1 PAIR OF MATING CONTACTS THAT MATE 1.00mm AFTER THE REMAINDER OF THE SIGNAL AND GROUND CONTACTS.
- ⑯ - FOR CONNECTORS WITH EITHER A RIGHT OR LEFT GUIDE MODULE, TWO PHILLIPS PAN HEAD M2 HOLD DOWN SCREWS MAY BE USED TO SECURE THE CONNECTOR TO THE PCB. THE SCREW LENGTH SHALL BE 2.0-6.0mm PLUS THE THICKNESS OF THE BOARD. SCREWS ARE NOT PROVIDED WITH CONNECTOR.



spec ref	SEE NOTES	dr	SHU CHEN	2013-10-17	projection	MM	size	A2	scale	1:1
tolerance std	TOLERANCES UNLESS OTHERWISE SPECIFIED	eng	HEAVEN CEN	2013-10-17		← →	ecn no	rel level	In Work	rev
ASME Y14.5M		chr	D JOHNSCU	2014-03-12						
surface	✓	appr			product family		dwg no	10123159	7	
linear	0.X ±.3 0.XX ±.10 0.XXX ±.050	FCI		title		ExqMAX R.A. RECEPTACLE ASSY		sheet 10 of 10		
angular	0° ±°	www.fci.com		cat. no.		Product - Customer Drw				

Copyright FCI.

X-ON Electronics

Largest Supplier of Electrical and Electronic Components

Click to view similar products for [High Speed/Modular Connectors](#) category:

Click to view products by [Amphenol](#) manufacturer:

Other Similar products are found below :

[2332816-1](#) [89006-1137LF](#) [650827-1](#) [65762-001LF](#) [73474-201LF](#) [74040-1346](#) [74075-0267](#) [88911-201LF](#) [9514M0C20D](#) [1410191-1](#)
[1410337-1](#) [1410368-3](#) [1410964-2](#) [1410326-3](#) [1410367-3](#) [1410971-4](#) [1467833-1](#) [2000877-1](#) [2000878-1](#) [2041314-1](#) [2065387-1](#) [2187307-1](#)
[2187462-1](#) [2226278-6](#) [KA81-07](#) [91290-101LF](#) [1934290-1](#) [2000875-1](#) [2065917-1](#) [2102736-2](#) [FSR-40](#) [2169868-2](#) [2226279-2](#) [22354-8](#) [437-](#)
[5040-000](#) [5-1393565-0](#) [532449-3](#) [532803-2](#) [34745-0001](#) [0740618502](#) [0760151403](#) [0760551105](#) [0760551608](#) [0761451128](#) [0761651124](#)
[0761655108](#) [0761659807](#) [0769853208](#) [0736440217](#) [0758324203](#)