

EPIC® H-BE 32 Screw termination

The proven standard inserts for easy assembly
 Standard inserts with screw, crimp cage clamp and Push-In termination
 The EPIC® H-BE series is suitable for applications that require a reliable connection when working with high voltages and currents



Industrial machinery and plant engineering



Robust



Temperature-resistant

Info

Proven screw for easy installation
 Screw, crimp, cage clamp and Push-In version - freely combinable

Application range

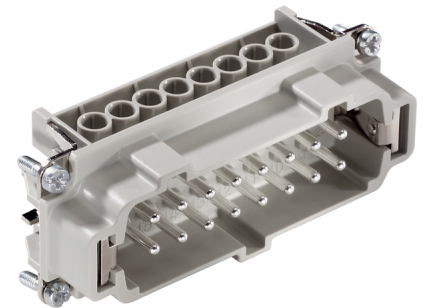
Mechanical engineering
 Light & sound technology
 Plastics industry

Technical Data

Stripping length (mm):	8
Rated voltage (V):	IEC: 500 V UL: 600 V CSA: 600 V
Rated impulse voltage:	6 kV
Rated current (A):	IEC: 16 A UL: 16 A CSA: 16 A
Contact resistance:	< 2 mOhm
Contacts:	Copper alloy, hard silver-plated
Number of contacts:	16 + PE
Termination methods:	Screw termination: 0.5 - 2.5 mm ²
Cycle of mechanical operation:	100
Temperature range:	-40°C to +100°C, short-term up to +125°C
VDE-tested:	Certified production control: VDE-REG. no.: B437 UL-tested: UL File Number: E75770
Degree of soiling:	3

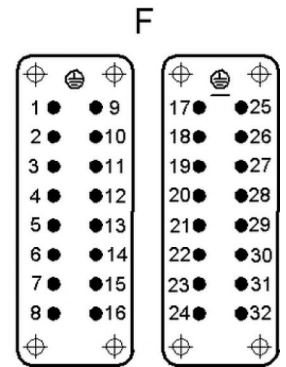
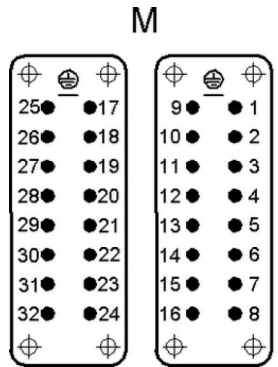
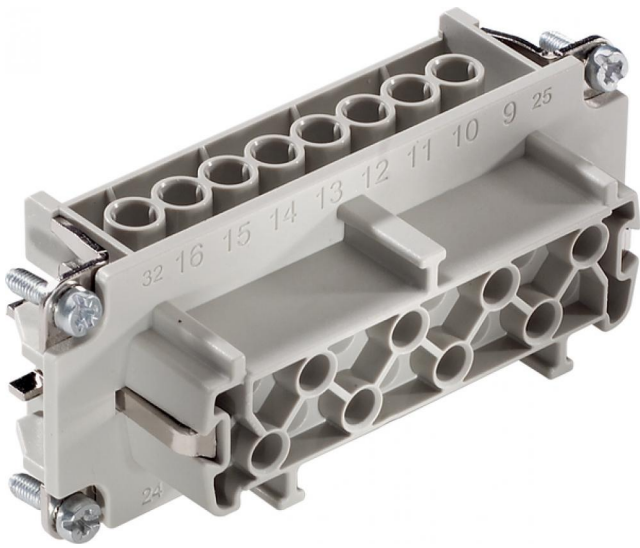
Note

Photographs are not to scale and do not represent detailed images of the respective products.



Part number	Article description	Contact type	Wire protection	Number of operating contacts
H-BE 32 screw termination				
10202000	EPIC® H-BE 16 SS 17-32	male	yes	17 - 32
H-BE 16 screw termination				
10194000	EPIC® H-BE 16 SS	male	yes	1 -16
10195000	EPIC® H-BE 16 BS	female	yes	1 -16
10203000	EPIC® H-BE 16 BS 17-32	female	yes	17 - 32
10194100	EPIC® H-BE 16 SS	male		1 -16
10195100	EPIC® H-BE 16 BS	female		1 -16
10202100	EPIC® H-BE 16 SS 17-32	male		17 - 32
10203100	EPIC® H-BE 16 BS 17-32	female		17 - 32

EPIC® H-BE 32 Screw termination



X-ON Electronics

Largest Supplier of Electrical and Electronic Components

Click to view similar products for [Standard Circular Connector](#) category:

Click to view products by [Lapp Kabel](#) manufacturer:

Other Similar products are found below :

[C015 10F006 001 1](#) [5M2530B10P](#) [600247N007](#) [600259N006](#) [600273N007](#) [600432N009](#) [6280-2PG-519](#) [6280-3PG-311](#) [6280-3SG-311](#)
[6280-7SG-3DC](#) [6280-7SG-522](#) [6282-5PG-311](#) [6282-6PG-519](#) [6282-8SG-311](#) [6283-11](#) [6283-15](#) [6290](#) [6293](#) [6382-2PG-311](#) [6382-2PG-3DC](#)
[6382-2SG-321](#) [6382-2SG-3DC](#) [6382-4SG-516](#) [67-03E20-37P](#) [681-PMG](#) [CXS3102A14S2P](#) [CXS3102A181S](#) [CXS3106A14S6S](#)
[D38999/20FC8SA L/C](#) [MB12P-1](#) [MB12R-6](#) [7251-2PG-300](#) [7251-2SG-300](#) [7251-4PG-300](#) [7251-4SG-300](#) [7251-5PG-300](#) [7251-5SG-300](#)
[7251-6SG-300](#) [7251-7PG-300](#) [7251-8PG-300](#) [7271-6SG-300](#) [7282-3PG-300-CH3](#) [73000005663](#) [75-190011-03P](#) [75-190216-08S](#) [75-190218-](#)
[10P](#) [75-214636-52P](#) [75-474118-10P](#) [75-474211-03P](#) [75-474218-19S](#)