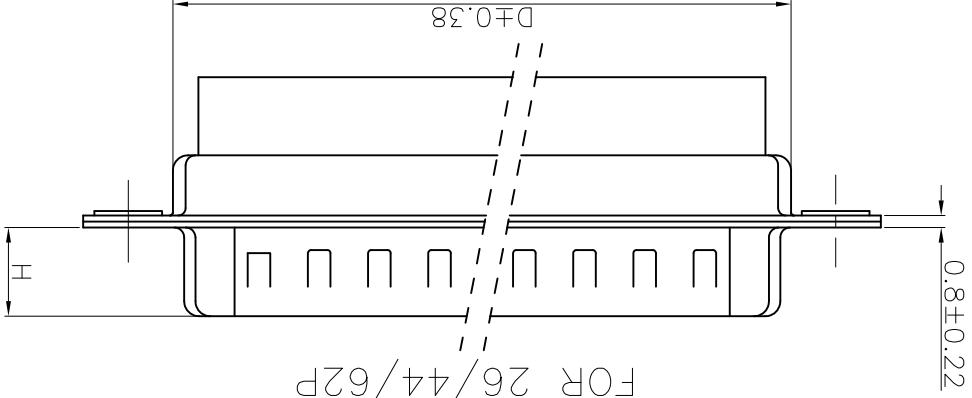
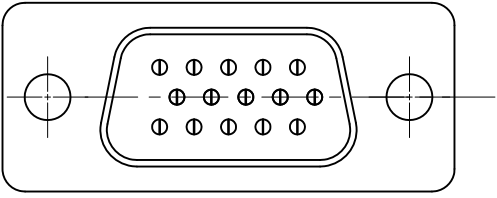


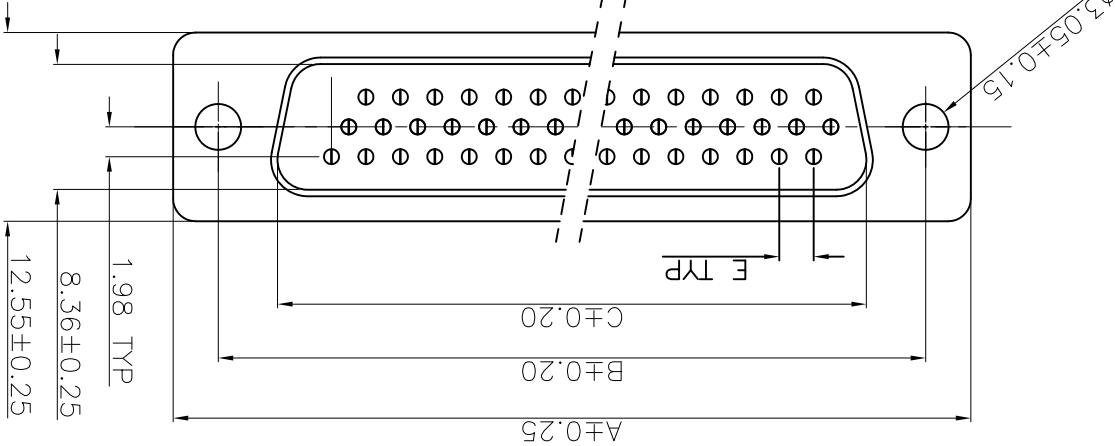


POS.	PART NO.	A	B	C	D	E	H
15	10090930-P150ALF	30.81	24.99	16.92	19.10	2.29	5.90±0.25
26	10090930-P260ALF	39.24	33.32	25.25	27.75	2.29	5.90±0.25
44	10090930-P440ALF	53.04	47.04	38.96	41.30	2.29	5.70±0.25
62	10090930-P620ALF	69.32	63.50	55.42	57.40	2.41	5.70±0.25

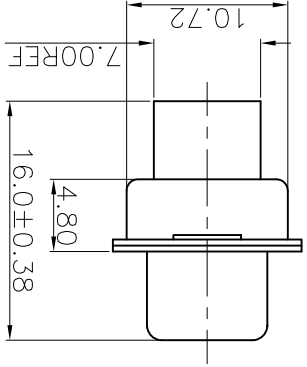
FOR 15P



FOR 26/44/62P

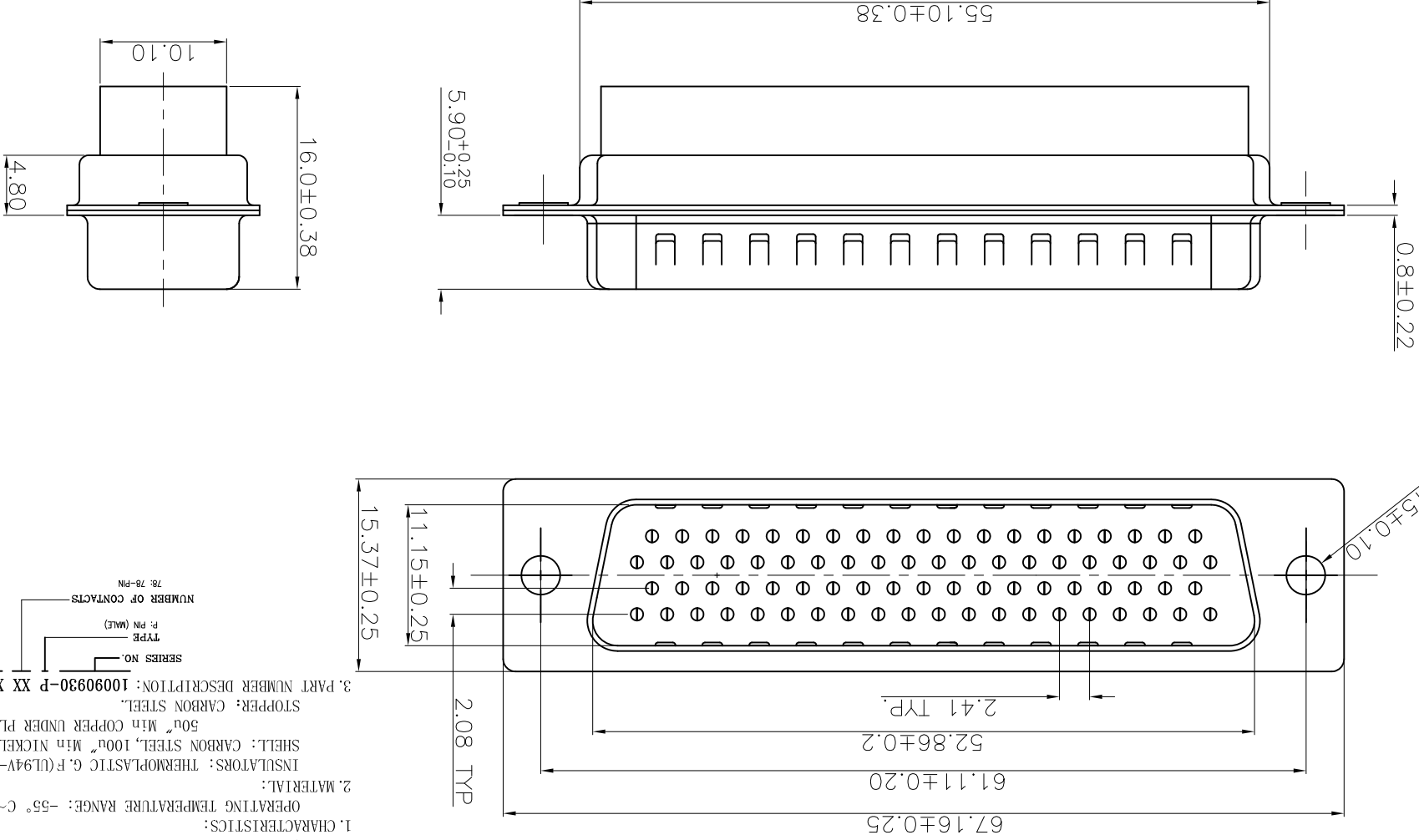


matl. code		tolerances unless otherwise specified		CUSTOMER COPY		www.fciconnect.com	
lit	ecn no	dr	date	.X ± 0.38	projection	title	
A	T09-1157	JH	12/10/09	.XX ± 0.25	MM	HDEC MALE CRIMPING	
inlead		angles		product family		code	
.XXX ± 0.10		0° ± 2°		D-SUB		TWN	
dr	JASON HSU	12/10/09	12/10/09	size		sheet	
engr	JASON HSU	12/10/09	12/10/09	dwg no		1 of 2	
chr	GARY HSIEH	12/10/09	12/10/09	scale		10090930	
appd	JOSEPH HSIA	12/10/09	12/10/09	1:1		A4	
revision	A	A		sheet		1 of 2	
sheet	1	2		index			



REMARK:
 1. CHARACTERISTICS:
 OPERATING TEMPERATURE RANGE: -55° C ~ 105° C
 2. MATERIAL:
 INSULATORS: THERMOPLASTIC G. F (UL94V-0) BLACK
 SHELL: CARBON STEEL, 1000" Min NICKEL TIN TOP OVER,
 50u" Min COPPER UNDER PLATE.
 STOPPER: CARBON STEEL.
 3. PART NUMBER DESCRIPTION: 10090930-P XX X X LF
 SERIES NO. _____
 TYPE: PLATE MOUNTING OPTION _____
 P: PIN (MALE) _____
 NUMBER OF CONTACTS _____
 15: 15-PIN _____
 44: 44-PIN _____
 26: 26-PIN _____
 62: 62-PIN _____
 LF: ROHS COMPLIANT
 A: STANDARD HOLE
 CONTACT FINISH _____
 0: NO CONTACT

PART NO.: 10090930-P780ALF



mat'l. code		tolerances unless otherwise specified		CUSTOMER COPY		www.fciconnect.com	
litr	ecn no	dr	date	linear	angles	projection	
				.XX ± 0.25	0° ± 2°	HDEC 78P MALE CRIMPING	
				.XXX ± 0.10		title	
				.X ± 0.38		product family	
						D-SUB	
						size dwg no	
						10090930	
						sheet	
						2 of 2	
						revision	
						sheet	
						index	

ACAD

PDM: Rev:A

STATUS: Released

Printed: Dec 24, 2009

REMARK: 1. CHARACTERISTICS: OPERATING TEMPERATURE RANGE: -55° C ~ 105° C
 2. MATERIAL: INSULATORS: THERMOPLASTIC G. F (UL94V-0) BLACK
 SHELL: CARBON STEEL, 100µ" Min NICKEL TIN TOP OVER,
 50µ" Min COPPER UNDER PLATE.
 STOPPER: CARBON STEEL.
 3. PART NUMBER DESCRIPTION: 10090930-P XX X X LF
 SERIES NO. TYPE P: FIN (MATE)
 NUMBER OF CONTACTS 78: 78-PIN
 CONTACT FINISH 0: NO CONTACT
 PLANGE MOUNTING OPTION A: STANDARD HOLE
 LF: ROHS COMPLIANT

X-ON Electronics

Largest Supplier of Electrical and Electronic Components

Click to view similar products for [D-Sub Standard Connectors](#) category:

Click to view products by [FCT Electronics](#) manufacturer:

Other Similar products are found below :

[DCM37S732N](#) [DAM15P500](#) [DEV09S364GTLF](#) [DEM09P032N](#) [DDM50P732N](#) [DAM15S332N](#) [173109-2218](#) [173109-2466](#) [173109-2436](#)
[173109-2435](#) [56F706-005-LI](#) [56F711-015](#) [015-0341-000](#) [015-0372-008](#) [015-8544-011](#) [017041-0005](#) [020419-0104](#) [012-0515-000](#) [012-9507-](#)
[034](#) [012-9507-114](#) [012-9534-001](#) [020745-0008](#) [609-25P](#) [M24308/2-23Z](#) [M243082310F](#) [M243082410F](#) [M243082411F](#) [M24308/4-21](#)
[CT1A18-11PSA206](#) [CT1N36-5SC](#) [CT2-16S-17PS](#) [CT2-20-15PCAU](#) [CT2-24-12PS](#) [CT2-24-28PSF127A206](#) [CT2-32-9PC](#) [CT6F9767-14-4-](#)
[14S-5PC](#) [CT6FA10SL-4PS](#) [CT7-18-10SC](#) [CT7-18-10SCAU](#) [CT7-18-12SCAU](#) [CT7-18-1PC](#) [CT7-18-1PCAU](#) [CT7-18-21SCAU](#) [M83513/01-](#)
[FC](#) [M83723/76W24619 L/C](#) [M85049/48-3-2F](#) [69001-865](#) [6STD09PCM99B70X](#) [6STD09SCM99B30X](#) [6STD09SCT99S40X](#)