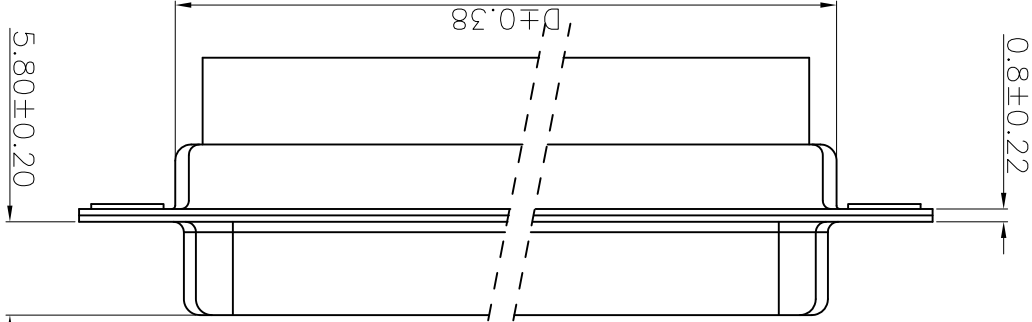
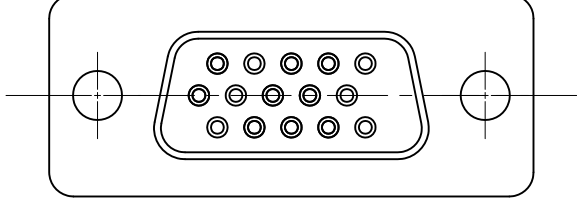


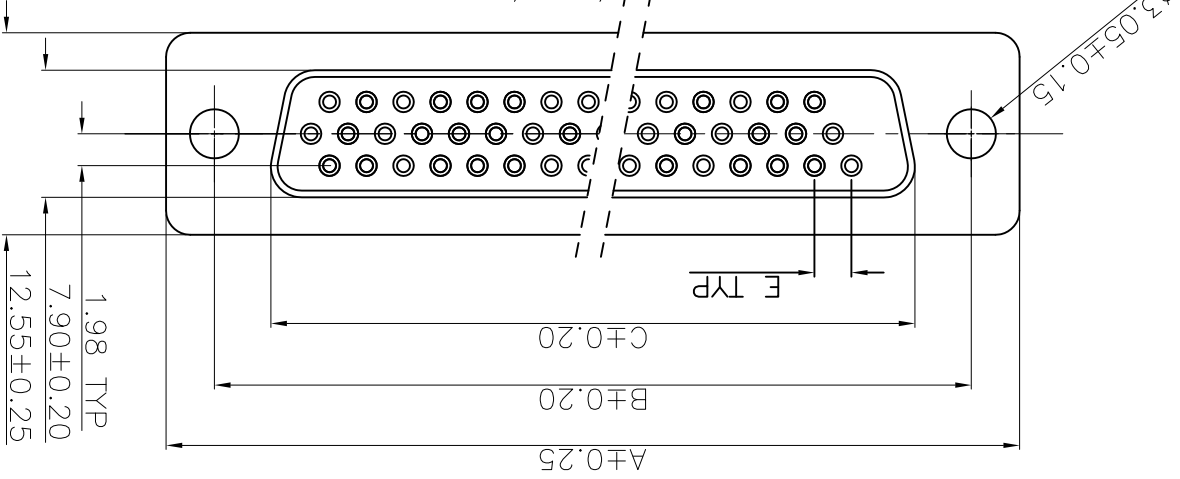


| POS. | PART NO.         | A     | B     | C     | D     | E    |
|------|------------------|-------|-------|-------|-------|------|
| 15   | 10090931-S150ALF | 30.81 | 24.99 | 16.33 | 19.10 | 2.29 |
| 26   | 10090931-S260ALF | 39.24 | 33.32 | 24.66 | 27.75 | 2.29 |
| 44   | 10090931-S440ALF | 53.04 | 47.04 | 38.38 | 41.30 | 2.29 |
| 62   | 10090931-S620ALF | 69.32 | 63.50 | 54.84 | 57.40 | 2.41 |

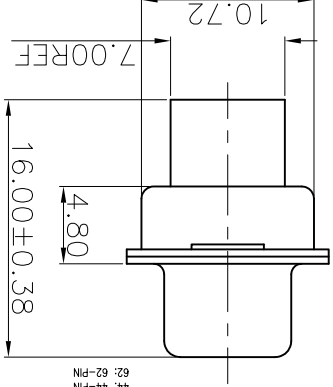
FOR 15P



FOR 26/A4/62P



| matl. code |             | tolerances unless otherwise specified |          | CUSTOMER COPY |            | www.fciconnect.com   |        |
|------------|-------------|---------------------------------------|----------|---------------|------------|----------------------|--------|
| itr        | ecn no      | dr                                    | date     | .X ± 0.38     | projection | title                |        |
| A          | T09-1157    | J.H                                   | 12/10/09 | .XX ± 0.25    | projection | HDEC FEMALE CRIMPING |        |
| angl       |             |                                       |          | .XXX ± 0.10   | angles     |                      |        |
| dr         | JASON HSU   | 12/10/09                              |          | 0 ± Z         | angles     |                      |        |
| engr       | JASON HSU   | 12/10/09                              |          |               | engr       | product family       | D-SUB  |
| chr        | GARY HSIEH  | 12/10/09                              |          |               | chr        | size                 | dwg no |
| appd       | JOSEPH HSIA | 12/10/09                              |          |               | appd       | scale                | 1:1    |
| sheet      | revision    | index                                 | sheet    |               |            |                      |        |
| A          | A           | A                                     | 1        |               |            |                      |        |
|            |             |                                       | 2        |               |            |                      |        |



REMARK:  
 1. CHARACTERISTICS:  
 OPERATING TEMPERATURE RANGE: -55° C ~ 105° C  
 2. MATERIAL:  
 INSULATORS: THERMOPLASTIC G.F.(UL94V-0) BLACK  
 SHELL: CARBON STEEL, 1000" Min NICKEL TIN TOP OVER,  
 50u" Min COPPER UNDER PLATE.  
 STOPPER: CARBON STEEL.  
 3. PART NUMBER DESCRIPTION: 10090931-S XX X X LP  
 SERIES NO. \_\_\_\_\_  
 TYPE \_\_\_\_\_  
 S: SOCKET (FEMALE)  
 NUMBER OF CONTACTS \_\_\_\_\_  
 LP: ROHS COMPLIANT  
 FLANGE MOUNTING OPTION \_\_\_\_\_  
 A: STANDARD HOLE  
 CONTACT FINISH \_\_\_\_\_  
 0: NO CONTACT  
 15: 15-PIN  
 26: 26-PIN  
 44: 44-PIN  
 62: 62-PIN

ACAD

PDM: Rev:A

STATUS: Released

Printed: Dec 24, 2009

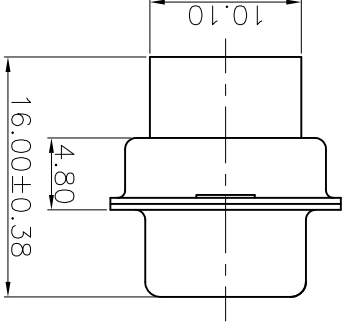
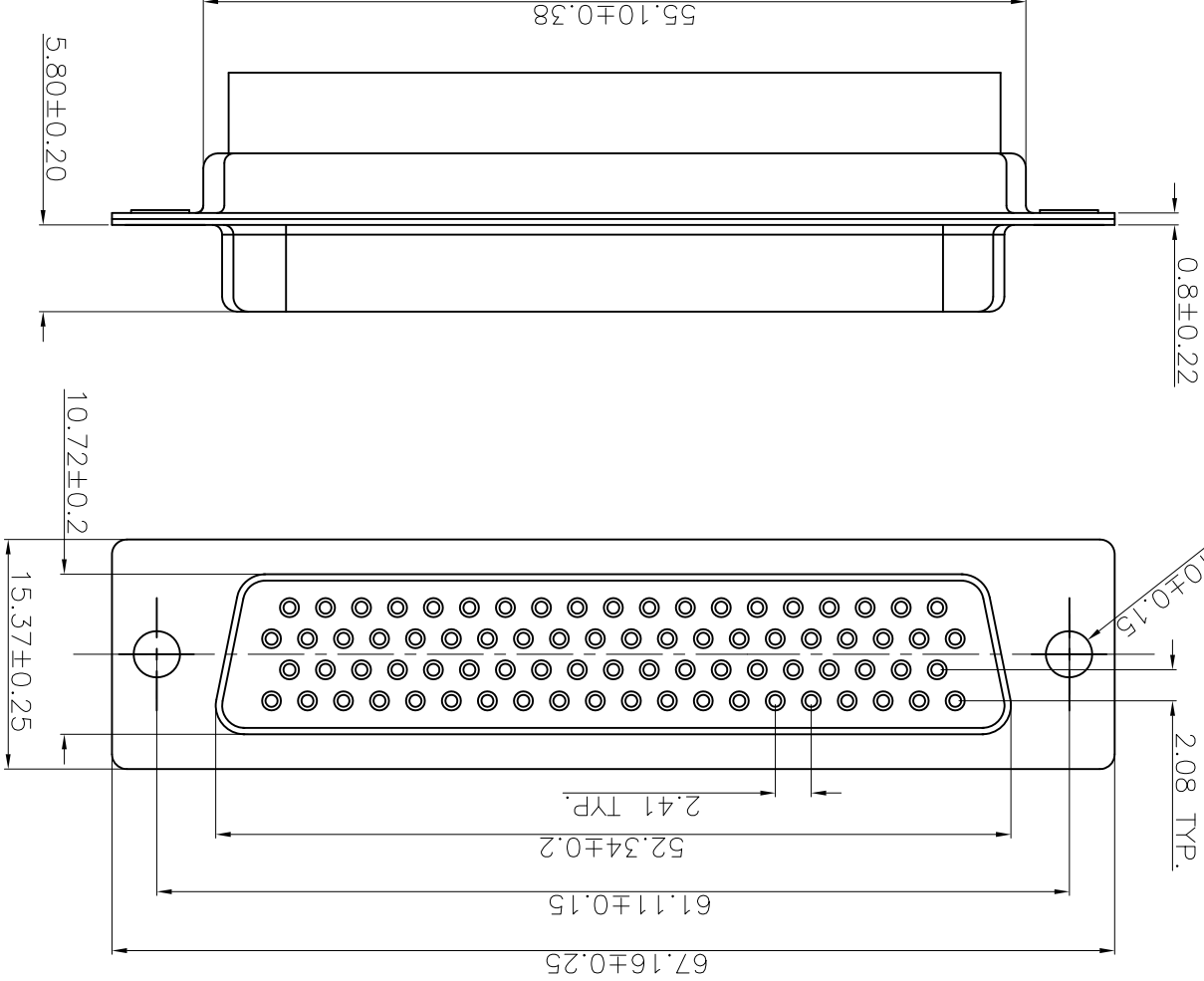
1 | 2

3 | 4

1 | 2

3 | 4

PART NO.: 10090770-S780ALF



|                |        |                                       |      |                |         |                    |  |
|----------------|--------|---------------------------------------|------|----------------|---------|--------------------|--|
| mat'l. code    |        | tolerances unless otherwise specified |      | CUSTOMER COPY  |         | www.fciconnect.com |  |
| lit            | ecn no | dr                                    | date | linear         | angles  |                    |  |
| A              |        |                                       |      | .XX ± 0.25     | 0° ± 2° |                    |  |
|                |        |                                       |      | .XXX ± 0.10    |         |                    |  |
|                |        |                                       |      | .X ± 0.38      |         |                    |  |
| projection     |        | HDEC 78P FEMALE CRIMPING              |      | title          |         |                    |  |
| product family |        | D-SUB                                 |      | code           |         |                    |  |
| size           |        | MM                                    |      | product family |         | D-SUB              |  |
| dwg no         |        | 10090931                              |      | TMN            |         | 2 of 2             |  |
| sheet          |        | 2 of 2                                |      | revision       |         |                    |  |
| index          |        |                                       |      | sheet          |         |                    |  |

1 | 2

ACAD

PDM: Rev A

STATUS: Released

Printed: Dec 24, 2009

B

A

4

3

1 | 2

REMARK:  
 1. CHARACTERISTICS:  
 OPERATING TEMPERATURE RANGE: -55° C ~ 105° C  
 2. MATERIAL:  
 INSULATORS: THERMOPLASTIC G.F.(UL94V-0) BLACK  
 SHELL: CARBON STEEL, 100µ" Min NICKEL TIN TOP OVER,  
 50µ" Min COPPER UNDER PLATE.  
 STOPPER: CARBON STEEL.  
 3. PART NUMBER DESCRIPTION: 10090931-S XX X X LF  
 SERIES NO. \_\_\_\_\_  
 TYPE \_\_\_\_\_  
 S: SOCKET (FRAME)  
 NUMBER OF CONTACTS \_\_\_\_\_  
 78: 78-PIN  
 CONTACT FINISH \_\_\_\_\_  
 D: NO CONTACT  
 LF: ROHS COMPLIANT  
 PLANGE MOUNTING OPTION \_\_\_\_\_  
 A: STANDARD HOLE

## X-ON Electronics

Largest Supplier of Electrical and Electronic Components

*Click to view similar products for [Headers & Wire Housings](#) category:*

*Click to view products by [FCT Electronics](#) manufacturer:*

Other Similar products are found below :

[95000-104TRLF](#) [10135584-644402LF](#) [DF62W-EP2022PCA](#) [95000-106TRLF](#) [DF62W-2022SCA](#) [DF62W-EP2022PC](#) [2203348](#) [DF62W-2022SC](#) [1084018](#) [1029039](#) [1084017](#) [802-10-012-10-002000](#) [1112640](#) [1112639](#) [891-007-9SS-BST1T](#) [000-34000](#) [0008550134](#) [0009482033](#) [0009507031](#) [57102-F02-18ULF](#) [57102-S06-03LF](#) [57202-S52-04LF](#) [PCN6-15S-2.5E](#) [0039019024](#) [58102-G61-06LF](#) [582553-1](#) [0009485154](#) [0009508121](#) [0022285053](#) [0050291907](#) [018731A](#) [LY20-4P-DT1-P1E-BR](#) [02.125.8002.8](#) [60101931](#) [60598-1 \(Cut Strip\)](#) [M1625-3R/100](#) [61062-3](#) [61082-181009](#) [CSU011177004](#) [636-1427](#) [638009-1](#) [641938-9](#) [641991-4](#) [644168-1](#) [644827-2](#) [647662-1](#) [65039-019ELF](#) [65692-001LF](#) [65781-018](#) [65781-047](#)