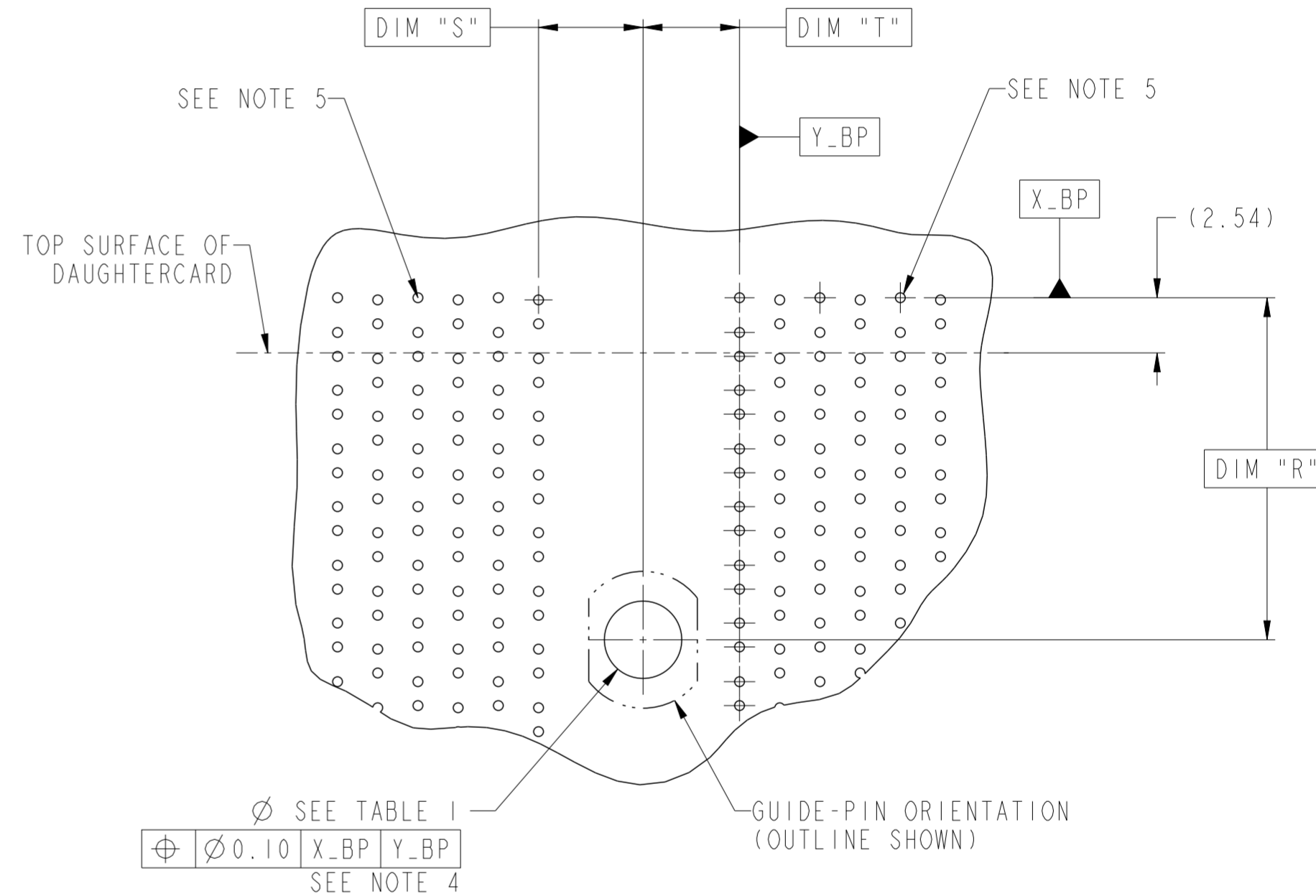
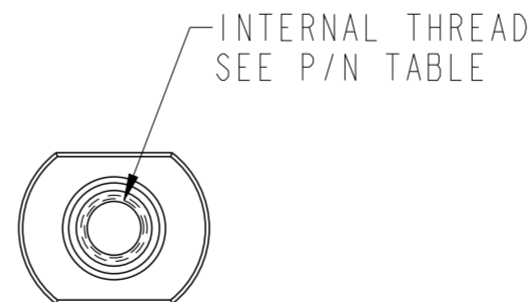
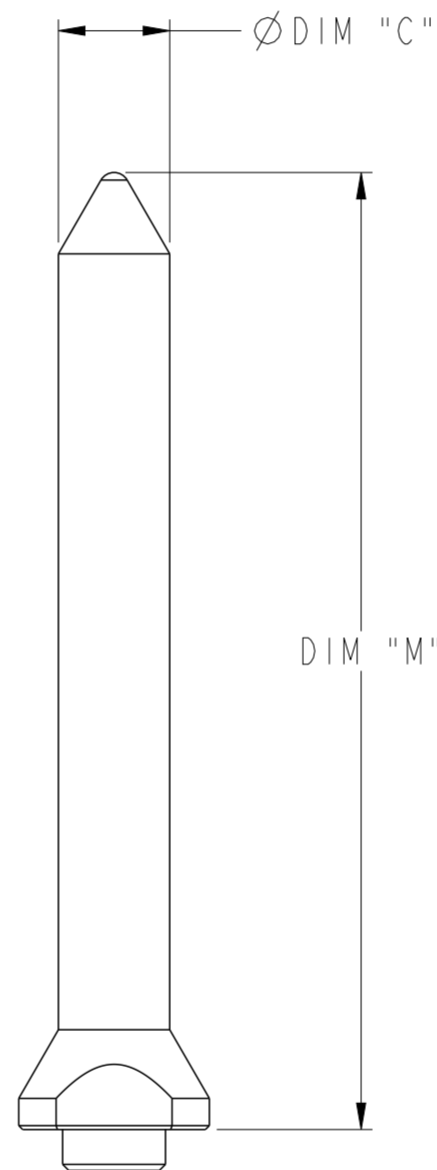
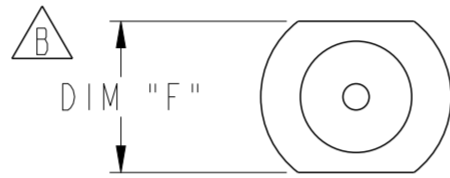


PART NUMBER	DIAMETER		THREAD	DIM "F"	DIM "M"	DIM "S"	DIM "T"	SUPPORTS (SEE TABLE 2)
	DESCRIPTION	DIM "C"						
10091775-001LF	STANDARD	Ø 3.68	#2-56	5.00	31.64	4.81	4.44	3, 4, 5, & 6-PAIR
10091775-002LF	LARGE	Ø 5.52	#6-32	7.00	28.14	6.66	6.29	3, 4, 5, & 6-PAIR
10091775-003LF	STANDARD	Ø 3.68	#2-56	5.00	25.70	4.81	4.44	2-PAIR
10091775-004LF	STANDARD	Ø 3.68	#2-56	5.00	38.00	4.81	4.44	STACKER
10091775-005LF	LARGE	Ø 5.52	#6-32	7.00	31.64	6.66	6.29	3, 4, 5, & 6-PAIR

THREAD	THREAD LENGTH	PCB THICKNESS RANGE	PART NUMBER	GENERAL DESCRIPTION
#2-56 UNC	.375" / 9.53mm	1.60 - 5.00	10091790-002LF	PHILLIPS PAN-HEAD SEMS SCREW WITH SQUARE-CONICAL WASHER
	.500" / 12.7mm	5.00 - 8.00	10091790-003LF	
	.625" / 15.88mm	8.00 - 10.00	10091790-004LF	
#6-32 UNC	.375" / 9.53mm	1.60 - 4.00	10091791-001LF	
	.500" / 12.7mm	4.00 - 7.50	10091791-002LF	
	.625" / 15.88mm	7.50 - 10.00	10091791-003LF	

NOTES:

- MATERIAL: STAINLESS STEEL
- GUIDE-PIN SUPPORTS ALL XCede BAKPLANE MODULES AS NOTED IN P/N TABLE.
- XCede PRODUCT SPECIFICATION: GS-12-588 (PRELIMINARY)
- XCede APPLICATION SPECIFICATION: GS-20-121 (PRELIMINARY)
- PLATED THROUGH HOLE OPTION SUPPORTS CONNECTION TO CHASSIS FOR GROUNDED GUIDE-MODULE OPTION. SEE XCede APPLICATION SPECIFICATION FOR ROUTING GUIDELINES.
- XCede PCB FOOTPRINTS ARE SHOWN FOR RELATIVE PLACEMENT REFERENCE ONLY. PLEASE SEE APPLICABLE XCede MODULE DRAWING FOR DETAILED XCede FOOTPRINT REQUIREMENTS.
- GUIDE PIN REQUIRES SCREW FOR MOUNTING. SEE TABLE 3 FOR SUPPORTING SCREW OPTIONS.
- A \triangle SYMBOL WILL BE NEXT TO ANY DIMENSION, NOTES OR VIEW WHICH HAS BEEN MODIFIED WITH THE CURRENT DRAWING REVISION.



PCB FOOTPRINT
GUIDE-PIN HOLE RELATIVE TO XCede SIGNAL MODULES
APPLIES TO ALL XCede SIZES AND GUIDE-PIN DASH NUMBERS
SEE NOTE 5 AND TABLES 1 & 2

XCede PRODUCT VERSION	DIM "R"	
	STANDARD DIA PINS	LARGE DIA PINS
2-PAIR	6.79	N/A
3-PAIR	11.495	TBD
4-PAIR	15.75	14.75
5-PAIR	15.75	17.53
6-PAIR	15.75	17.53

	STANDARD-DIAMETER GUIDE-PIN		LARGE-DIAMETER GUIDE-PIN	
	UNGROUND	GROUND	UNGROUND	GROUND
FHS	Ø 3.48 - 3.63		Ø 5.58 - 5.73	
PAD	N/A	Ø 6.5	N/A	Ø 8.5
PLATED	NO	YES	NO	YES
DRILL (mm)	3.57	3.66	5.61	5.79
DRILL (in)	.1405	.144	.221	.228

spec ref	GS-12-588	dr	Jim Swain	2009/08/27	projection	mm	size	A2	scale	1:1
tolerance std	ASME Y14.5	eng	Matthew Cheong	2014/09/22	chr	-	ecn no	ELX-S-18865-1	rel level	Released
surface	✓	appr	Chen-Hong Tan	2014/09/28	product family	XCede	cat. no.	10091775	rev	B
ASME Y14.5	linear	0.X	±0.25	0.XX	±0.13	0.XXX	±	angular	0°	±2°

X-ON Electronics

Largest Supplier of Electrical and Electronic Components

Click to view similar products for [High Speed/Modular Connectors](#) category:

Click to view products by [Amphenol](#) manufacturer:

Other Similar products are found below :

[2332816-1](#) [89006-1137LF](#) [650827-1](#) [65762-001LF](#) [73474-201LF](#) [74040-1346](#) [74075-0267](#) [88911-201LF](#) [9514M0C20D](#) [1410191-1](#)
[1410337-1](#) [1410368-3](#) [1410964-2](#) [1410326-3](#) [1410367-3](#) [1410971-4](#) [1467833-1](#) [2000877-1](#) [2000878-1](#) [2041314-1](#) [2065387-1](#) [2187307-1](#)
[2187462-1](#) [2226278-6](#) [KA81-07](#) [91290-101LF](#) [1934290-1](#) [2000875-1](#) [2065917-1](#) [2102736-2](#) [FSR-40](#) [2169868-2](#) [2226279-2](#) [22354-8](#) [437-](#)
[5040-000](#) [5-1393565-0](#) [532449-3](#) [532803-2](#) [34745-0001](#) [0740618502](#) [0760151403](#) [0760551105](#) [0760551608](#) [0761451128](#) [0761651124](#)
[0761655108](#) [0761659807](#) [0769853208](#) [0736440217](#) [0758324203](#)