

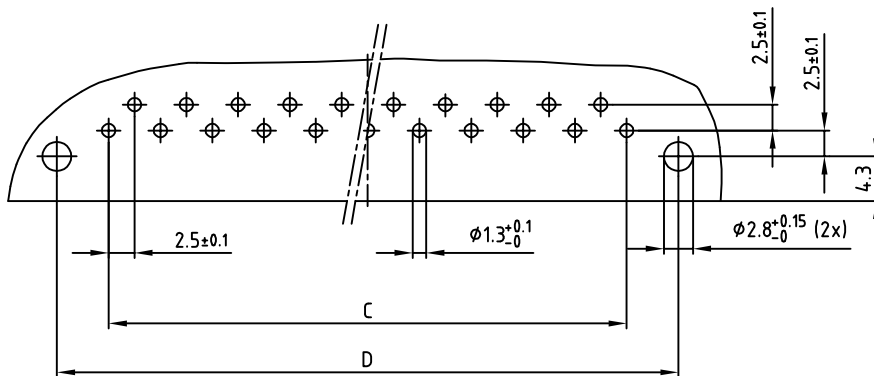
Polzahl No. of pos.	A ±0.2	B ±0.1	C ±0.1	D ±0.1	Art.-Nr. Part-No
13	45.6	12x2.5=30	12x2.5=30	40	101E10079X
21	65.6	20x2.5=50	20x2.5=50	60	101E10099X
31	90.6	30x2.5=75	30x2.5=75	85	101E10119X

NOTES:

- INSULATOR: PC GF UL 94 V-1, GREY
- CONTACTS: COPPER ALLOY
PLATING: HARD SILVER PLATED
500 MATING CYCLES

3. CONNECTOR IS PART MARKED: PART-NO CONEC ABC

P.C.B. HOLE DRILLINGS



Directive 2002/95/EC RoHS compliant

THIS DRAWING MAY NOT BE COPIED OR REPRODUCED IN ANY WAY, AND MAY NOT BE PASSED ON TO A THIRD PARTY, WITHOUT WRITTEN PERMISSION. OWNERSHIP AND COPYRIGHT OF CONEC Gmbh DO NOT ALTER CAD DRAWING BY HAND

1 x b	Ä688	15.03.2013	E.Mick.
a	Original		
rev.	description	date	name

tolerance		dim. in mm	
2006	date	name	
drawn	21.08.	Sonnenberg	
appd.	21.08.	Mickenbecker	
norm	DIN 41617		
d-old			

scale:	2:1	
material:	SEE NOTES	
title:	MALE CONNECTOR 13pos.-31pos. / 2,5mm with angled solder pins	
dwg no:	10K4A014	DIN-A 3 sh:1/1
part no:	SEE TABLE	

X-ON Electronics

Largest Supplier of Electrical and Electronic Components

Click to view similar products for [DIN 41612 Connectors](#) category:

Click to view products by [CONEC](#) manufacturer:

Other Similar products are found below :

[09231126901](#) [PCN10F-24P-2.54DS\(72\)](#) [004.767](#) [02221602702](#) [024069](#) [602427301412000](#) [013275](#) [691327-1](#) [74670-0732](#) [74680-0340](#)
[75880-0015](#) [76453-0014](#) [86093159ALF](#) [923454](#) [QLC260R](#) [120X10099X](#) [120X10019X](#) [120X10089X](#) [120X10129X](#) [121A10039X](#)
[121A10309X](#) [122A10019X](#) [122A10029X](#) [122A10249X](#) [122A10669X](#) [122A11089X](#) [122A13089X](#) [121B10409X](#) [122A10089X](#)
[122A10129X](#) [122A10349X](#) [122A13359X](#) [1377391-4](#) [DIN-048CPC-SR1-MH](#) [1393583-2](#) [1393726-7](#) [140X10059X](#) [140X10129X](#) [143-1913-](#)
[000](#) [143-1908-000](#) [1484472-1](#) [173052](#) [2110070-1](#) [2110070-2](#) [CBC20T00-008FDS5-0-1-002VR](#) [983-0SE12-12P6](#) [17041102202](#) [172699-](#)
[5036](#) [173051](#) [20](#) [8457096](#) [010](#) [025](#)