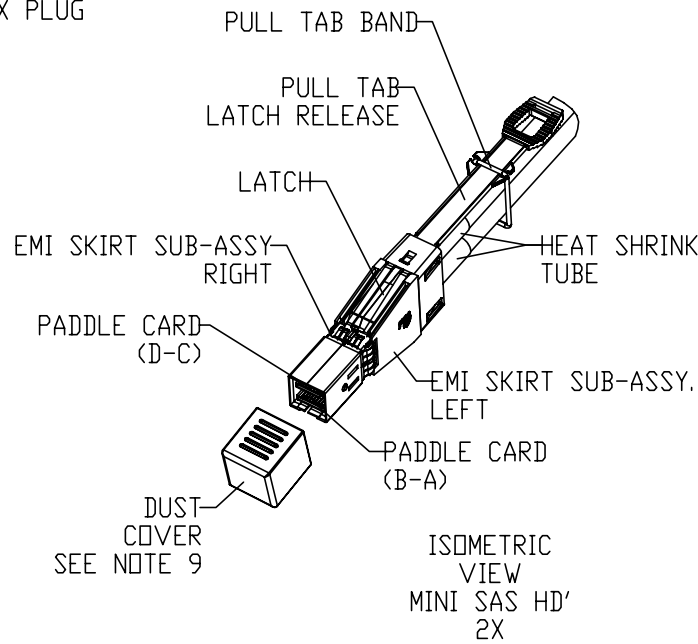
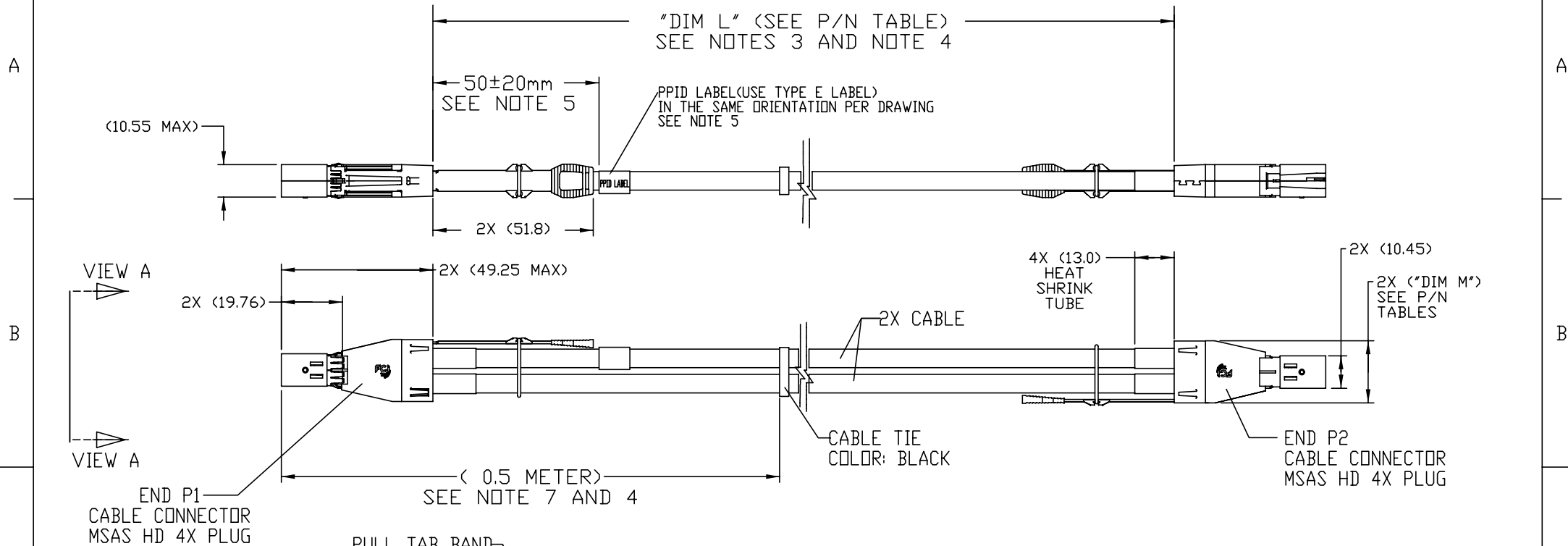


1	2	3	4
PRODUCT NUMBER	DESCRIPTION	NOTES	
10125417-XXXXLF	NON-HF	SEE SHT. 3	

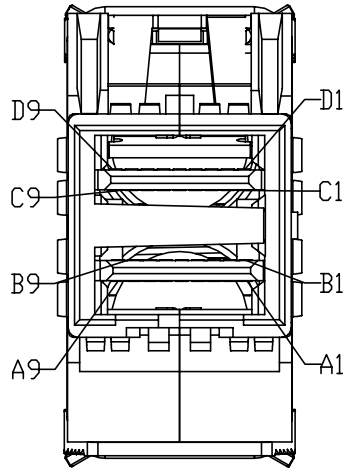


dr	Tom Feng	2014-09-04	projection	mm	size	A3	scale	NTS
eng	Tom Feng	2014-09-04			ecn no	ECN-ELX-N-18706-1		
chr	Delhly Liu	2014-09-04	product family	C&A	rel level	Released		
appr	Frank Mao	2014-09-04			title	FINAL ASSEMBLY (PASSIVE) MSAS HD 4X ASSEMBLY (APPLICATION UP TO 6Gb/s)	dwg no	10125417
www.fci.com			cat. no.	-	Product - Customer Drw		sheet 1 of 5	

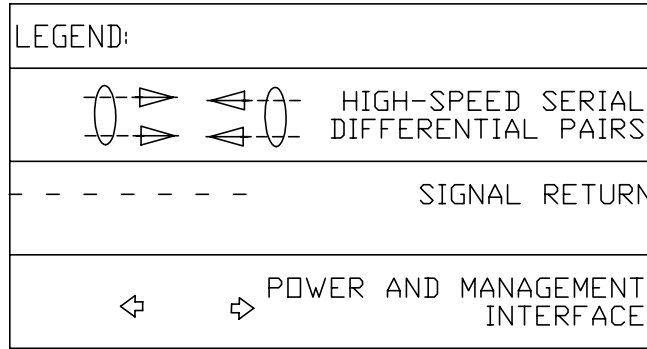


Copyright
FCI

PRODUCT NUMBER	DESCRIPTION	NOTES
10125417-XXXXLF	NON-HF	SEE SHT. 3

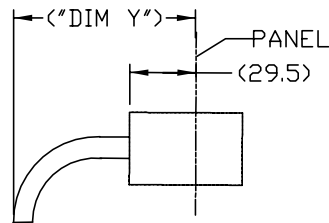


P1
VIEW A
SCALE
4:1



EEPROM CONNECTIONS
Vact = WRITE PROTECT
SCL = CLOCK SIGNAL
SDA = DATA SIGNAL
GND = GROUND

CABLE	("DIM Y") HF	("DIM Y") NON-HF
24 AWG	92.8	92.8
26 AWG	87.5	85.1
28 AWG	81.5	79.1
30 AWG	77.9	74.3



BEND RADIUS
TOP VIEW OF
CONNECTOR

END P1		END P2	
POSITION	SYMBOL	POSITION	SYMBOL
D9	GROUND	B9	GROUND
D8	Tx2-	B8	Rx2-
D7	Tx2+	B7	Rx2+
D6	GROUND	B6	GROUND
D5	Tx0-	B5	Rx0-
D4	Tx0+	B4	Rx0+
D3	GROUND	B3	GROUND
D2	Vman	B2	ModPrsL
D1	Vact(EEPROM)	B1	Vact
C1	SCL(EEPROM)	A1	Reserved
C2	SDA(EEPROM)	A2	Intl
C3	GROUND(EEPROM)	A3	GROUND
C4	Tx1+	A4	Rx1+
C5	Tx1-	A5	Rx1-
C6	GROUND	A6	GROUND
C7	Tx3+	A7	Rx3+
C8	Tx3-	A8	Rx3-
C9	GROUND	A9	GROUND
B9	GROUND	D9	GROUND
B8	Rx2-	D8	Tx2-
B7	Rx2+	D7	Tx2+
B6	GROUND	D6	GROUND
B5	Rx0-	D5	Tx0-
B4	Rx0+	D4	Tx0+
B3	GROUND	D3	GROUND
B2	ModPrsL	D2	Vman
B1	Vact	D1	Vact(EEPROM)
A1	Reserved	C1	SCL(EEPROM)
A2	Intl	C2	SDA(EEPROM)
A3	GROUND	C3	GROUND(EEPROM)
A4	Rx1+	C4	Tx1+
A5	Rx1-	C5	Tx1-
A6	GROUND	C6	GROUND
A7	Rx3+	C7	Tx3+
A8	Rx3-	C8	Tx3-
A9	GROUND	C9	GROUND

SHIELD-----SHIELD

dr	Tom Feng	2014-09-04	projection	mm	size	A3	scale	NTS
eng	Tom Feng	2014-09-04			ecn no	SEE SHEET 1	rel level	Released
chr	Delhly Liu	2014-09-04						
appr	Frank Mao	2014-09-04	product family	C&A				
			title		dwg no		rev	
			FINAL ASSEMBLY (PASSIVE)		10125417		B	
www.fci.com			cat. no.		Product - Customer Drw		sheet 2 of 5	

PART NUMBER (NON-HALOGEN FREE) SEE NOTE 11	CUSTOMER (DELL) PART NUMBER	MFG ID	CUSTOMER REV	"DIM L" LENGTH & TOLERANCE SEE NOTE 4, (mm)	"DIM M" (mm)	AWG	Custom EEPROM
10125417-2005LF	2NY40	77821	A00	500	17.3	30	No
10125417-2010LF	D6WGO	77821	A00	1000	17.3	30	No
10125417-3020LF	M6J5Y	77821	A00	2000	17.3	28	No
10125417-3030LF	52X5M	77821	A00	3000	17.3	28	No
10125417-4050LF	V44N8	77821	A00	5000	20.1	26	No
10125417-4070LF	RGDDH	77821	A00	7000	20.1	26	No

NOTES:

1. MATERIAL:

- BACK SHELLS: ZINC ALLOY/ COPPER UNDERPLATE/ NICKEL OVERPLATE
- Ⓑ PULL TAB: PA66
- LATCH : STAINLESS STEEL
- FERRULE: BRASS
- EMI SKIRT: STAINLESS STEEL
- LOCTITE
- PADDLE CARD: PRINTED CIRCUIT SUBSTRATE
- HEAT SHRINK TUBE: POLYOLEFIN

2. THIS PRODUCT MEETS THE RESTRICTION OF HAZARDOUS SUBSTANCES IN ELECTRICAL AND ELECTRONIC EQUIPMENT (RoHS) DIRECTIVE (2011/65/EU)

Ⓒ THIS DIMENSION IS A FINISHED PRODUCT LENGTH.

Ⓓ UNLESS OTHERWISE SPECIFIED ASSEMBLED LENGTH TOLERANCE IS TO BE:
"DIM L" < 1 METER = ±25mm
"DIM L" 1 METER TO 10 METERS = ± 2% OF "DIM L"

Ⓔ LABEL CONTENTS: (SEE ATTACHED DELL PPID LABEL EXAMPLE),

LABEL USE TYPE E LABEL IN THE SAME ORIENTATION(PER DELL SPEC. 13190_A30-00_2_06_2014).
SEE NEXT PAGE FOR DETAIL.

Ⓕ ALL CABLE ASSEMBLIES 100% TESTED FOR CONTINUITY AS DEFINED IN WIRING LIST.

7. PLACE A CABLE TIE EVERY 0.5 METER ON ALL ASSEMBLIES, UNLESS OTHERWISE SPECIFIED.
IN CASE OF 0.5 METER CABLE ASSEMBLY, CABLE TIE IS TO BE APPLIED AT THE MIDWAY POINT.

8. OTHER TESTING PERFORMED AS REQUIRED BY PRODUCT SPECIFICATION: GS-12-651.

Ⓖ PACKAGING OF LEAD FREE PRODUCTS MEETS LABELING AND PACKAGING PER SPECIFICATION GS-14-920. PACKAGE CABLE ASSEMBLIES PER GS-14-1272.
DUST COVERS ARE TO BE ASSEMBLED PRIOR TO PACKAGING.

USE ONE VELCRO STRAP (BLACK) TO COIL CABLE ASSEMBLY WHEN PACKING.

CABLE ASSEMBLY SHOULD BE PLACED IN A ZIP-LOCK BAG,

AND ATTACH DELL PPID LABEL (USE TYPE A LABEL PER DELL SPEC. 13190_A30-00_2_06_2014) TO BAG IN THE SAME ORIENTATION.(SEE NEXT PAGE FOR LABEL DETAIL INFORMATION),

AND ATTACH DELL CARTON/BOX PPID LABEL (USE TYPE J LABEL (PER DELL SPEC. 13190_A30-00_2_06_2014)) TO CARTON/BOX IN THE SAME ORIENTATION.(SEE NEXT PAGE FOR LABEL DETAIL INFORMATION)


10. A "△" SYMBOL WILL BE NEXT TO ANY DIMENSION, VIEW, OR NOTE WHICH HAS BEEN MODIFIED WITH THE CURRENT DRAWING REVISION. THE CURRENT REVISION WILL BE SHOWN IN THE SYMBOL.

Ⓙ HALOGEN FREE RAW CABLE CAN BE USED AS A SUBSTITUTE ON NON-HF PRODUCT NUMBERS.

12. CABLE ASSEMBLY IS DESIGNED FOR APPLICATIONS UP TO 6Gb/s (MEET ELECTRICAL REQUIREMENTS OF SAS 2.1).

13. MATES TO SERIES: 10112626 or 10112627 Or 10112628

14. EEPROM INFORMATION REFER TO FCI LATEST PRODUCT SPEC. GS-12-651,
NO CUSTOMER SPECIAL REQUIREMENT FOR EEPROM INFORMATION.

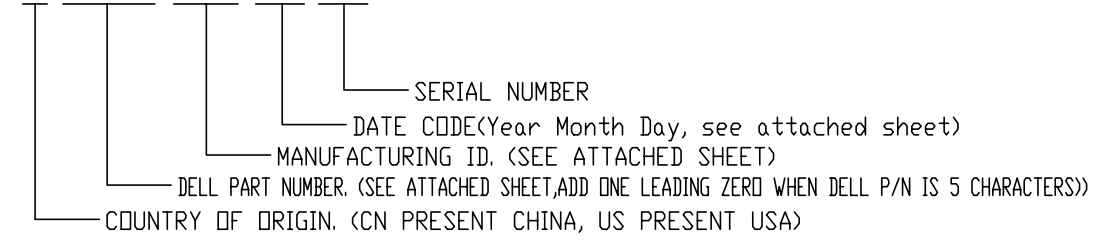
dr	Tom Feng	2014-09-04	projection	mm	size	A3	scale	NTS
eng	Tom Feng	2014-09-04			ecn no	SEE SHEET 1		
chr	Delhly Liu	2014-09-04	product family	C&A	rel level	Released		
appr	Frank Mao	2014-09-04						
		title FINAL ASSEMBLY (PASSIVE) MSAS HD 4X ASSEMBLY (APPLICATION UP TO 6Gb/s)			dwg no 10125417	rev B		
www.fci.com	cat. no.	-	Product - Customer Drw		sheet 3 of 5			



Copyright FCI

PART NUMBER (NON-HALOGEN FREE) SEE NOTE 11	CUSTOMER (DELL) PART NUMBER	MFG ID	CUSTOMER REV	AWG	Custom EEPROM
10125417-2005LF	2NY40	77821	A00	30	No
10125417-2010LF	D6WGO	77821	A00	30	No
10125417-3020LF	M6J5Y	77821	A00	28	No
10125417-3030LF	52X5M	77821	A00	28	No
10125417-4050LF	V44N8	77821	A00	26	No
10125417-4070LF	RGDDH	77821	A00	26	No

CN-02NY40-77821-39I-0123



1st Character present year codes

Year	2006	2007	2008	2009	2010	2011	2012	2013	AND SO ON
Code	6	7	8	9	0	1	2	3	

2nd Character present month codes

Month	Jan	Feb	Mar	Apr	May	June	July	Aug	Sep	Oct	Nov	Dec
Code	1	2	3	4	5	6	7	8	9	A	B	C

3rd Character present day codes

Day	1st	2nd	3rd	4th	5th	6th	7th	8th	9th	10th	
Code	1	2	3	4	5	6	7	8	9	A	
Day	11st	12nd	13rd	14th	15th	16th	17th	18th	19th	20th	
Code	B	C	D	E	F	G	H	I	J	K	
Day	21st	22nd	23rd	24th	25th	26th	27th	28th	29th	30th	31th
Code	L	M	N	O	P	Q	R	S	T	U	V

TYPE E LABEL EXAMPLE FOR CABLE



— CUSTOMER REV.(SEE ATTACHED SHEET)

SERIAL NUMBER:

Suppliers will be allowed the use of characters 0-9, A-O in the first position of the sequence number, with no restrictions on the 2nd through 4th positions provided that each sequence number is indeed unique*.

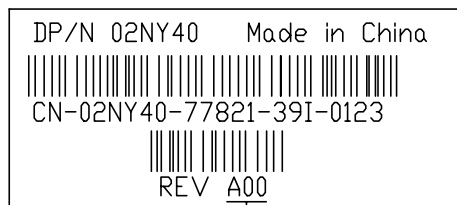
Suppliers ONLY

0 1 2 3

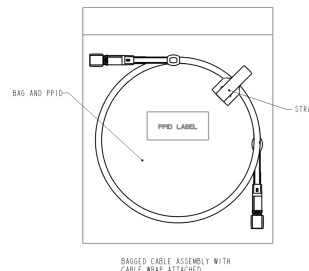
1 st Character	2 nd Character	3 rd Character	4 th Character
Numbers 0 - 9 and Letters A - O	Any number* And Any letter*	Any number* And Any letter*	Any number* And Any letter*

* 2nd-4th characters will provide a unique serial number*.

TYPE A LABEL EXAMPLE FOR BAG



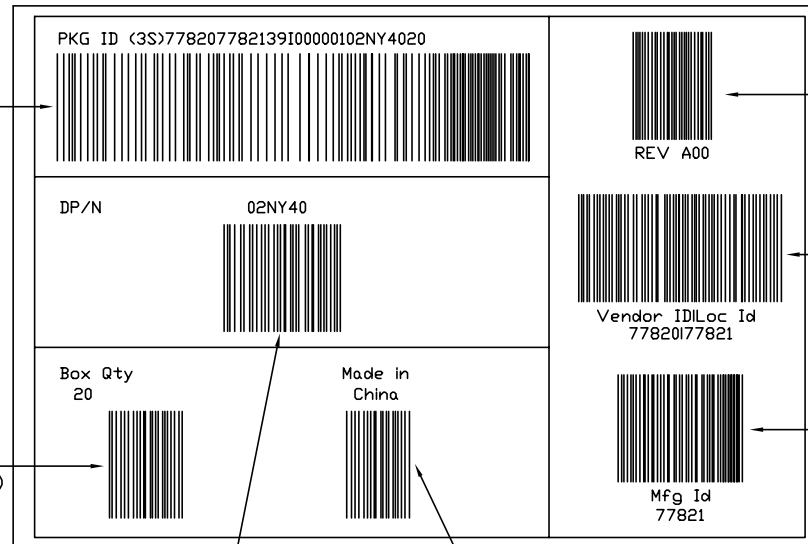
— CUSTOMER REV.(SEE ATTACHED SHEET)



dr	Tom Feng	2014-09-04	projection	mm	size	A3	scale	NTS
eng	Tom Feng	2014-09-04			ecn no	SEE SHEET 1		
chr	Delhly Liu	2014-09-04			rel level	Released		
appr	Frank Mao	2014-09-04	product family	C&A				
www.fcicom	title	FINAL ASSEMBLY (PASSIVE)			dwg no	10125417	rev	B
		MSAS HD 4X ASSEMBLY (APPLICATION UP TO 6Gb/s)						
cat. no.		-		Product - Customer Drw		sheet 4 of 5		

PART NUMBER (NON-HALOGEN FREE) SEE NOTE 11	CUSTOMER (DELL) PART NUMBER	MFG ID	CUSTOMER REV	AWG	Custom EEPROM
10125417-2005LF	2NY40	77821	A00	30	No
10125417-2010LF	D6WGO	77821	A00	30	No
10125417-3020LF	M6J5Y	77821	A00	28	No
10125417-3030LF	52X5M	77821	A00	28	No
10125417-4050LF	V44N8	77821	A00	26	No
10125417-4070LF	RGDDH	77821	A00	26	No

TYPE J LABEL EXAMPLE ON CARTON/BOX,



READ SHOW*3S778207782139I00000102NY4020* WHEN SCAN THIS BARCODE

Identifier _____
Vendor ID(FCI IS 77820) _____
Mfg Id(FCI IS 77821) _____
DATE CODE(Year Month Day, see sheet 4) _____

Box Qty
The total number of pieces contained in that box

DELL PART NUMBER,
SEE ATTACHED SHEET,ADD ONE LEADING ZERO
WHEN DELL P/N IS 5 CHARACTERS

Unique Number(six numeric characters,000001~999999),
Each carton/box will have a unique number that will not be duplicated for the same date code

READ SHOW*20* WHEN SCAN ,
(Box Qty---The total number of pieces contained in that box)

READ SHOW*02NY40* WHEN SCAN ,
(Note: DELL PART NUMBER,
SEE ATTACHED SHEET,ADD ONE LEADING ZERO
WHEN DELL P/N IS 5 CHARACTERS)

READ SHOW*CN* WHEN SCAN ,
(Note:CN present China)

READ SHOW*A00* WHEN SCAN

READ SHOW*77820|77821* WHEN SCAN
(NOTE: Must include the Pipebar"|")
(Vendor ID(FCI IS 77820) and
Loc Id(FCI IS 77821))

READ SHOW*77821* WHEN SCAN ,
(Note:Mfg Id(FCI IS 77821))



Copyright
FCI

dr	Tom Feng	2014-09-04	projection 	mm	size	A3	scale	NTS
eng	Tom Feng	2014-09-04			ecn no	SEE SHEET 1		
chr	Delhly Liu	2014-09-04			rel level	Released		
appr	Frank Mao	2014-09-04	product family	C&A				
		title			FINAL ASSEMBLY (PASSIVE)		rev	
www.fci.com		cat. no.			-		10125417	
		Product - Customer Drw			sheet 5 of 5		B	

X-ON Electronics

Largest Supplier of Electrical and Electronic Components

Click to view similar products for [amphenol manufacturer](#):

Other Similar products are found below :

[CTV06RGQF-17-52P](#) [CTVPS00RGF-23-6P-LC](#) [GC835TY2S](#) [CF-509621-29P](#) [BF8-1218-31SV-Y70](#) [TVP00RGW-23-6SA\(LC\)](#)
[RNJ27CI1535P014](#) [10-553998-139](#) [21-033388-031](#) [10-507142-843](#) [GTS06G-32-7S](#) [GTC06-36-78PX-023](#) [ACC02E28-51S-003-B30-LC](#)
[TV06RL-13-35SD-LC](#) [TV06RL-13-35SD](#) [TV06RL-13-98SD-LC](#) [TV06RL-13-98SD](#) [GTC08AF32-15SX-B30-LC](#) [GTC06G32-76PZ](#)
[TVP00RW-23-53AD](#) [100-007-213-002-001](#) [5M30-61](#) [FSPP-103-00-004](#) [360031](#) [10-037090-161](#) [10-541504-001](#) [10-580902-409](#) [TV97RW-](#)
[9-9S\(S15\)](#) [TVPS00RGF-9-5P-LC](#) [TVPS00RGF-9-5PA-LC](#) [TVP00RGQW-21-75P-LC](#) [TV06RW-25-90AE](#) [97-3108B16S-5PW-417](#) [PT06J20-](#)
[24SW](#) [97-3108B16S-4PY-417](#) [97-3108B16S-4PX-417](#) [97-3108B16S-5PY-417](#) [97-3108B16S-4PW-417](#) [CS-DSDMDB37MF-025](#) [97-](#)
[3108B16S-5PZ-417](#) [TV06RW-25-46AE](#) [TVS07RF-21-16AA](#) [TVS07RF-21-39BA](#) [60261626SNCOND1](#) [SE00TVW09](#) [CF-5A9013-04N](#) [CF-](#)
[6A4615-06N](#) [GTS01-22-22PX-025-116](#) [GTS01-22-22P-025-116](#) [GTS01-22-22P-116](#)