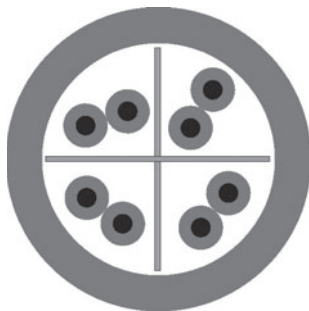


LAN Cable

Category 6

HELUKAT® 300
UTP UL

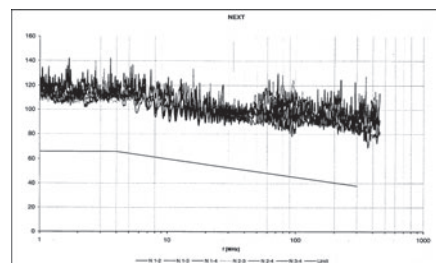


Cable structure

Inner conductor diameter:
Conductor material:
Core insulation:
Core colours:
Shielding 1:
Screen over stranding element:
Screen 1 over stranding:
Screen 2 over stranding:
Outer sheath material:
Outer diameter:
Outer sheath colour:

UTP 4x2xAWG 24/1 PVC, UL

0,55 mm
Copper, bare
PE
whbu/bu, whog/og, whgn/gn, whbn/bn
-
-
-
PVC
approx. 6,8 mm
Grey



Electrical data

Characteristic impedance:
Loop resistance:
Mutual capacitance:
Rel. propagation velocity:

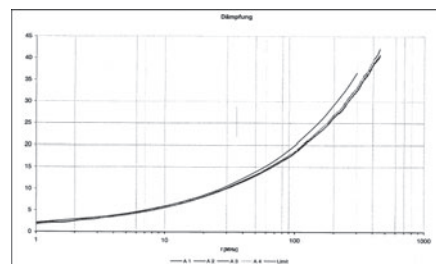
100 Ohm ± 20 ohm at 101 to 155 MHz
190 Ohm/km max.
50 nF/km nom.
67 %

Typical values

Frequency (MHz)	10	16	62,5	100	155	200	300
Attenuation (db/100m)	5,6	7,0	14,3	18,2	22,9	26,0	32,5
Next (db)	72,0	70,0	65,0	63,0	60,0	57,0	55,0
ACR (db)	66,4	63,0	50,7	44,8	37,1	31,0	22,5

Technical data

Weight: approx. 46 kg/km
Min. bending radius for laying: 55 mm
Operating temperature range min.: -20°C
Operating temperature range max.: +60°C
Caloric load, approx. value: 0,68 MJ/m
Copper weight: 20,00 kg/km



Norms

Acc. to ISO/IEC 11801, Acc. to EN 50173, Acc. to EIA/TIA 568-A, Category 6, Flame-retardant acc. to IEC 60332-1, Smoke density acc. to IEC 61034, CMX 444

Application

HELUKAT®300 data cables are used in the tertiary, but also in the secondary level of a network. They are characterized by large performance reserves and outstanding performance. They can be used to implement services such as Gigabit Ethernet, Fast Ethernet, Ethernet, ATM155, FDDI, token ring 4/16 Mbit/s, or ISDN absolutely trouble-free. Likewise, the mechanical characteristics are perfectly suited for the application in tight cable channels and platforms due to their optimized construction. This type is certified according UL because of the special PVC jacket.

Part no.

802172, UTP 4x2xAWG24/1 PVC UL (U/UTP)

Dimensions and specifications may be changed without prior notice.

X-ON Electronics

Largest Supplier of Electrical and Electronic Components

Click to view similar products for [Ethernet Cables / Networking Cables](#) category:

Click to view products by [Helukabel](#) manufacturer:

Other Similar products are found below :

[0152660053](#) [603020002](#) [73-7797-25](#) [73-8890-10](#) [73-8890-14](#) [73-8891-14](#) [73-8891-25](#) [73-8892-50](#) [73-8894-10](#) [73-8894-3](#) [73-8895-14](#) [73-8896-7](#) [MCJB2-10P6Q7-120](#) [84909-0204](#) [9QA0-111-12-3.00](#) [1200650742](#) [1200700174](#) [1200860368](#) [1200650013](#) [1201080008](#) [1-21919-1](#) [1300500373](#) [1300101844](#) [1300101845](#) [130050-0004](#) [1300500014](#) [1410147](#) [E16A06002M030](#) [E200102-009-S1](#) [MT14-187L](#) [17-103530](#) [NK5EPC18RDY](#) [NK5EPC18VLY](#) [NK5EPC18YLY](#) [NK5EPC1GRY](#) [NK5EPC30BLY](#) [NK5EPC30VLY](#) [NK5EPC30YLY](#) [NK5EPC4Y](#) [NK5EPC6YLY](#) [NK5EPC8BLY](#) [NK5EPC9YLY](#) [NK6PC30BUY](#) [NK6PC30GRY](#) [NK6PC30RDY](#) [NK6PC30Y](#) [NK6PC30YLY](#) [1969343-6](#) [C501100010](#) [C501106002](#)