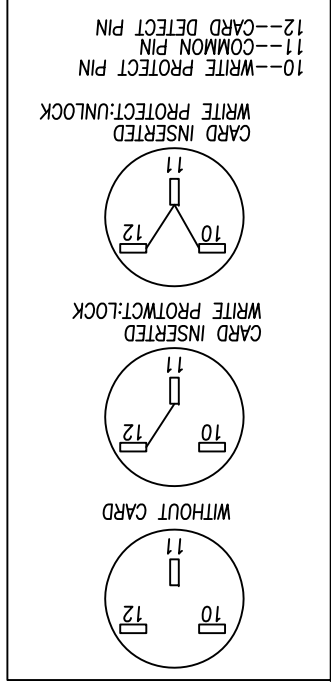
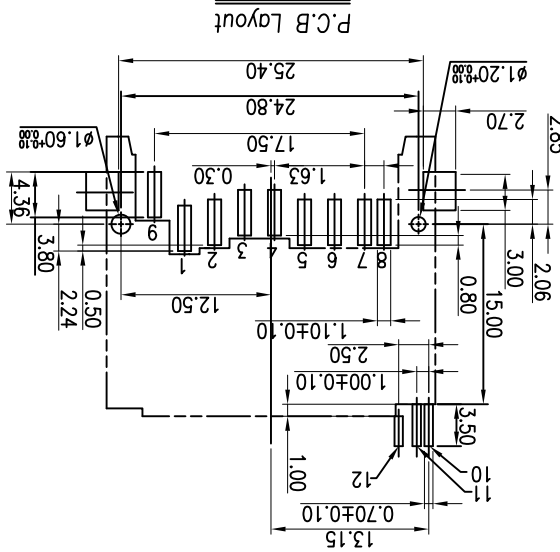
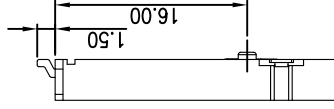
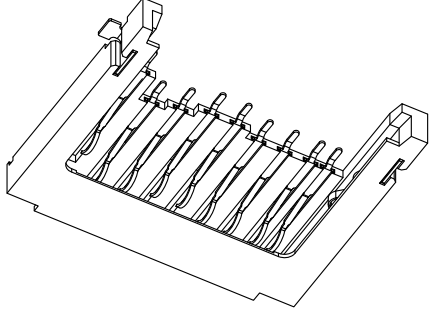
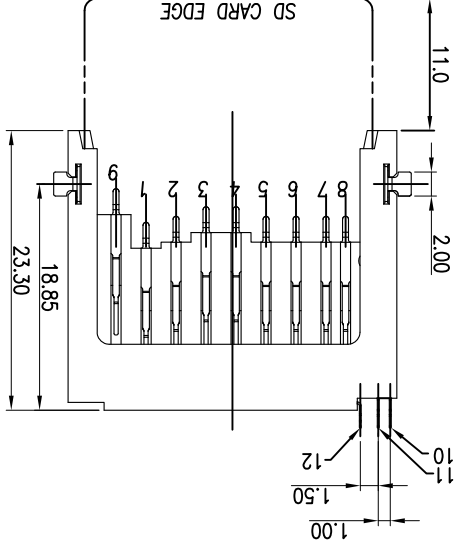
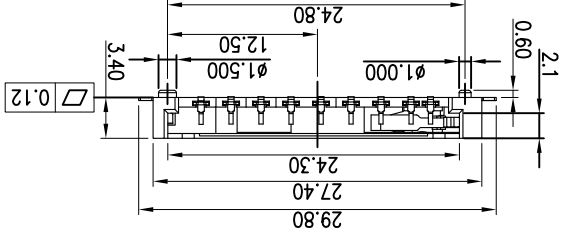


| Pin No. | Name    | Description          |
|---------|---------|----------------------|
| 1#      | CD/DAT3 | Card detect/Data I/O |
| 2#      | CMD     | Command              |
| 3#      | VSS1    | Ground               |
| 4#      | VDD     | Power                |
| 5#      | CLK     | Clock                |
| 6#      | VSS2    | Ground               |
| 7#      | DAT0    | Data I/O             |
| 8#      | DAT1    | Data I/O             |
| 9#      | DAT2    | Data I/O             |

SD CARD PIN DESIGN



- MATERIAL: HOUSING: HIGH TEMPERATURE THERMOPLASTIC. CONTACT: COPPER ALLOY. SHELL: COPPER ALLOY.
- PLATING: CONTACT AREA: 3u" and 10u" GOLD PLATED OVER NI. SOLDER TAIL: 100 u" MIN Sn PLATED OVER NI. SHELL SOLDER AREA: GOLD PLATED OVER NI. CONTACT NUMBER: 9 PIN
- RATING: CURRENT RATING: 0.5A VOLTAGE RATING: 250V<sub>RM</sub> OPERATING TEMPERATURE: -25°C~90°C 4.SPECIFICATION CONTACT RESISTANCE: 100mΩ Max DIELECTRIC WITHSTANDING VOLTAGE: 500VAC INSULATION RESISTANCE: 100MΩ Min INSERTION FORCE: 40N MAX. SEPARATION FORCE: 2N MIN.
- 104B-I X A 0-R 1 2 3 4  
1.Type T:TOP Mount  
2.Contact Plating A:10u"Gold Plating B:3u" Gold Plating  
3.Stand Off A:0mm 4.RHS

| REV. | DESCRIPTION | DATE | SIZE | REV. | FILE NAME:  |
|------|-------------|------|------|------|-------------|
| 10   |             |      | A4   |      | 104B-TXA0-R |
| 9    |             |      |      |      |             |
| 8    |             |      |      |      |             |
| 7    |             |      |      |      |             |
| 6    |             |      |      |      |             |
| 5    |             |      |      |      |             |
| 4    |             |      |      |      |             |
| 3    |             |      |      |      |             |
| 2    |             |      |      |      |             |
| 1    |             |      |      |      |             |

|                 |          |                                      |
|-----------------|----------|--------------------------------------|
| SCALE: AS SHOWN | UNIT: mm | UNLESS OTHERWISE SPECIFIED TOLERANCE |
| ANG. ±5         |          |                                      |
| 0.              |          |                                      |
| ±0.25           |          |                                      |
| ±0.00           |          |                                      |

|                       |           |           |
|-----------------------|-----------|-----------|
| DRAWN NAME: Wills     | 2007/1/18 | SD Socket |
| DRAWN NO. 104B-TXA0-R |           | Top Mount |
| APPROVED              |           |           |
| CHECKED               |           |           |
| DATE                  |           |           |

ATTEND TECHNOLOGY INC. www.attend.com.tw

## X-ON Electronics

Largest Supplier of Electrical and Electronic Components

*Click to view similar products for [Memory Card Connectors](#) category:*

*Click to view products by [Attend manufacturer](#):*

Other Similar products are found below :

[M10-597810-355](#) [M21-033321-005](#) [6426-201-21343](#) [69.920.0553.0](#) [MCR60A-98D-2.54DSA\(70\)](#) [FCN-568P068-G/07-4V](#) [809180410000000](#)  
[95622-003LF](#) [AD2-262F-38900-232](#) [DM3AT-SF-PEJM5\(41\)](#) [EN2997S72039F6](#) [N7E50-7516PG-20-WF](#) [IC11S-BUR-PNEJL\(71\)](#) [NX30TA-](#)  
[15PAA\(50\)](#) [21920-5](#) [2041353-2](#) [FUA006-3220-0](#) [308-DS1P0811-192](#) [33CFAE-DN](#) [MI21A-50PD-SF-EJR\(91\)](#) [502431-1011](#) [5175651-2](#) [10-](#)  
[247926-166](#) [10-629549-258N](#) [11327-001](#) [11327-002](#) [EN2997S02039B8](#) [EN2997S61212BN](#) [EN2997S72039B6](#) [EN2997SE02039B8](#)  
[EN2997SE61212BN](#) [EN2997SE72039B6](#) [603020000](#) [617230001](#) [71-252718-32P](#) [NX1-32T-KT3K\(05\)](#) [95622-003LF](#) [91-570124-15P](#)  
[192900-0488](#) [N7E50-U516RB-50-SIN0005](#) [DM1AA-SF-PEJ](#) [95079-00CALF](#) [84648-056HLF](#) [68-580163-21S](#) [33DVIR-29S12R](#)  
[SF58S006VBBR2000](#) [93-570123-08P](#) [GMC020080HR](#) [125A-78C00](#) [1010040575#](#)