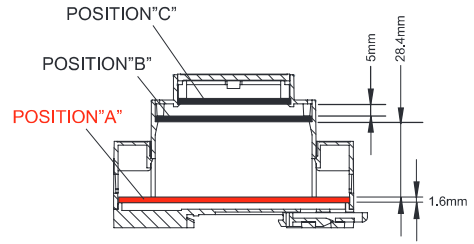
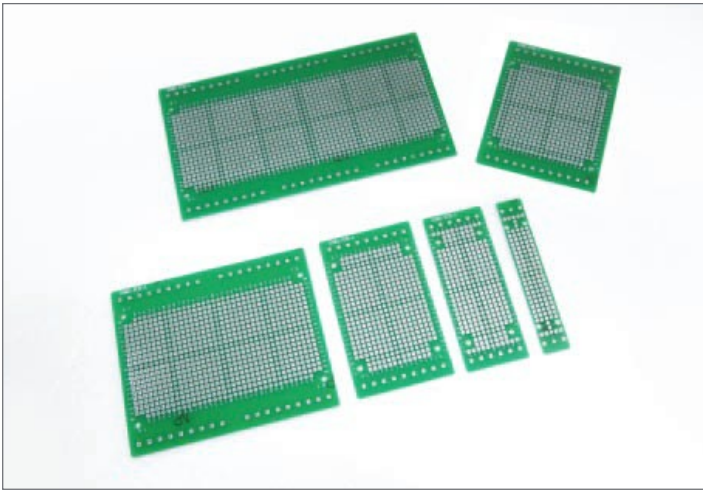


PCB and Terminal Block

PCB of position " A" for DXMG use



ITEM No.	EXTERNAL DIMENSION(mm)		
	LENGTH	WIDTH	HEIGHT
D1MG-PCB-A	14.3	86.9	1.6
D2MG-PCB-A	32.8	86.9	1.6
D3MG-PCB-A	50	86.9	1.6
D4MG-PCB-A	67.8	86.9	1.6
D6MG-PCB-A	102.8	86.9	1.6
D9MG-PCB-A	156.2	86.9	1.6

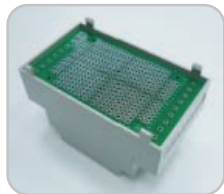
Example:



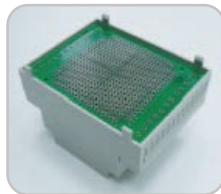
D1MG
with D1MG-PCB-A



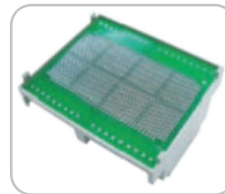
D2MG
with D2MG-PCB-A



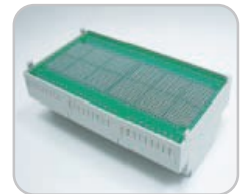
D3MG
with D3MG-PCB-A



D4MG
with D4MG-PCB-A



D6MG
with D6MG-PCB-A



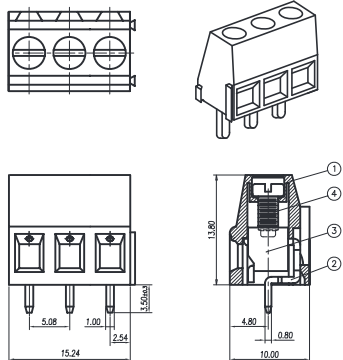
D9MG
with D9MG-PCB-A

3WAY of terminal block for DXMG use



ITEM No.	PRODUCT DESCRIPTION
DXMG-3WAY	3WAY of terminal block for D2MG/D3MG/D4MG/D6MG /D9MG use

DXMG-3WAY DRAWING:



NOTES:

1. Rating: 300V 20A (IEC 250V 24A)
PITCH: 5.08mm
2. Insulation Withstands Voltage:
AC 2000V at 1 minute
3. Insulation Resistance:
500M Ω or more at DC500V
4. Using Temperature Range:
-40°C~+105°C
5. Suitable Electric Wire:
24~12AWG(IEC 0.5~2.5mm²)
6. Torque Value: 4 kg-cm
7. RoHS compliance

Example:



D2MG with
3WAY of terminal block



D6MG with
3WAY of terminal block

X-ON Electronics

Largest Supplier of Electrical and Electronic Components

Click to view similar products for [Enclosures, Boxes, & Cases](#) category:

Click to view products by [Gainta](#) manufacturer:

Other Similar products are found below :

[CR-425 PAINTED](#) [585-R-WH-PK](#) [M-10-PLATED](#) [60221-01](#) [60566-01-000](#) [HPL-9VB BATT DOOR](#) [M-16-LID-PLATED](#) [M18-PLTD](#) [M-21-LID-PLATED](#) [M-21-PLATED](#) [M-23-PLATED](#) [CU-281-MB](#) [6711GSKT](#) [71884-29-028](#) [LH45-100 Black](#) [7200B](#) [72868-510-000](#) [CNS-0000 Black](#) [72883-510-000](#) [CNS-0101 Black](#) [72906-510-000](#) [CNS-0407 Black](#) [73091-510-000](#) [CNM-0000-BLACK Kit](#) [73092-510-000](#) [CNM-0101 Black](#) [73108-510-000](#) [CNL-0303 Black](#) [73395-510-039](#) [CNS-0006 Bone](#) [74257-510-000](#) [CNL-0004](#) [MDC-1183-PLAIN-ALUM](#) [MDC-1183-PTD](#) [MDC-13104-PLAIN-ALUM](#) [MDC-211 - PAINTED IVORY/BEIGE](#) [MDC-321-PTD](#) [MDC-432-PLAIN-ALUM](#) [MDC-973-PTD](#) [76](#) [77153-01-028](#) [FLX6030](#) [83535-01-508](#) [PS-11296-G](#) [PS-11298-B](#) [116-508](#) [120-407](#) [120-412](#) [120-909](#) [120-455](#) [R272-100-000](#) [120-910](#) [R501-001-010](#) [R508-080-000](#) [R508-160-000](#) [R530-120-000](#) [R530-122-000](#) [R530-200-000](#) [R531-160-000](#) [R531-200-000](#) [R582-080-100](#)