

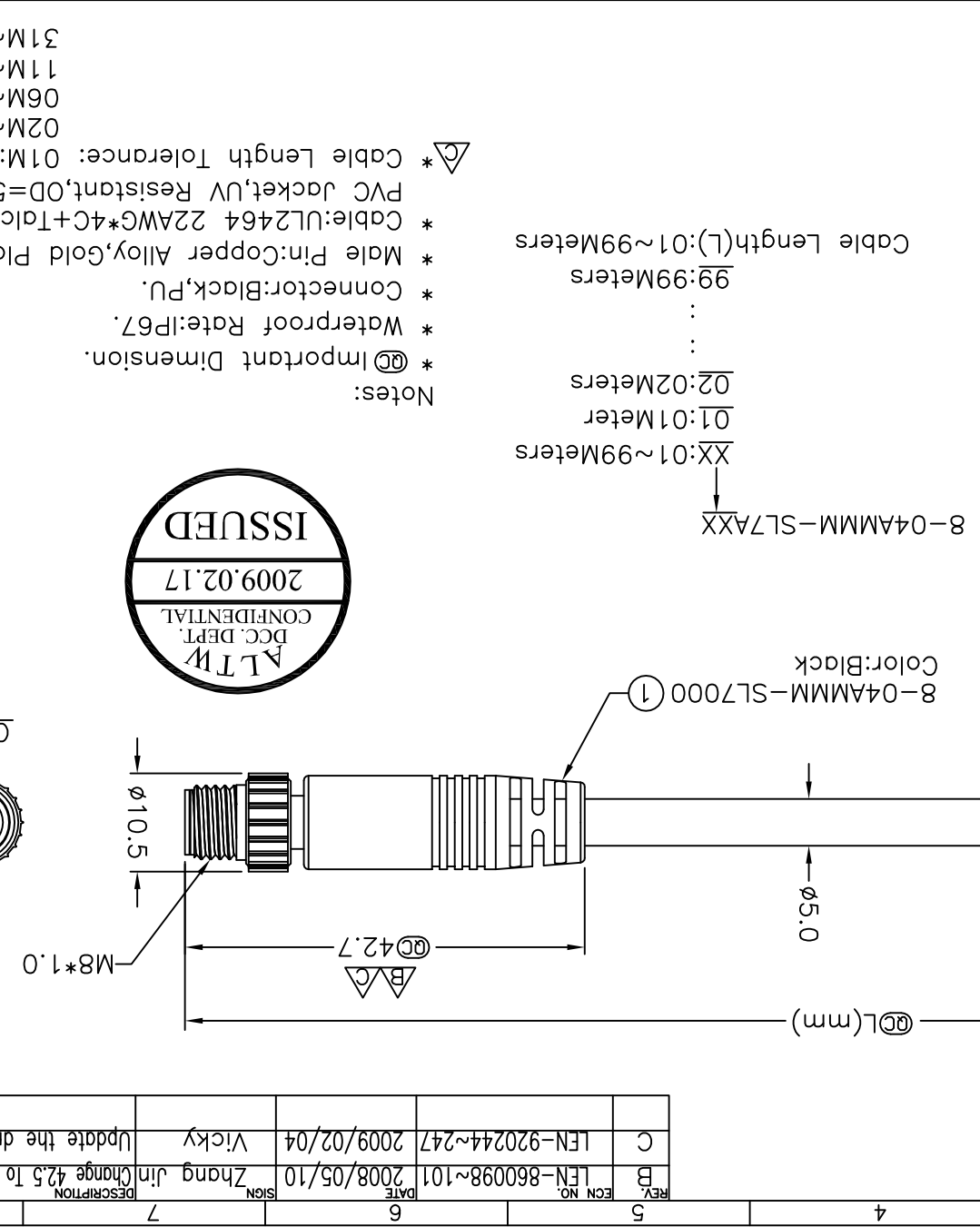
THIS DOCUMENT IS SUBJECT TO CHANGE WITHOUT NOTICE. IT IS CONFIDENTIAL AND A PROPERTY OF Amphphenol LTW. DISCLOSURE TO THIRD PARTY HAS TO BE AUTHORIZED BY Amphphenol LTW.

8 FMMW0702-01-01A2

DATE	2009/02/06	APPROVED BY	Luke
DATE	2009/02/06	CHECKED BY	Ivan
DATE	2009/02/06	DRAWN BY	Vicky

REV.	ECN NO.	DATE	SIGN.	DESCRIPTION
C	LEN-920244~247	2009/02/04	Vicky	Update the drawing.
B	LEN-860098~101	2008/05/10	Zhang jin	Change 42.5 to 42.7.

ITEM NO	8-04AMMM-SL7AXX	CUSTOMER	安費諾亮泰企業股份有限公司
DWG NO	8-04AMMM-SL7AXX		
ALTW			

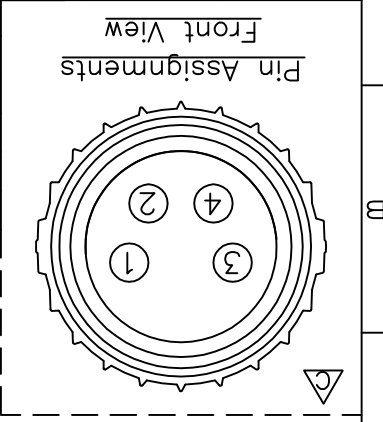


- Notes:
- * @ Important Dimension.
 - * Waterproof Rate: IP67.
 - * Connector: Black, PU.
 - * Male Pin: Copper Alloy, Gold Plated.
 - * Cable: UL2464 22AWG*4C+Talcum, Black, PVC Jacket, UV Resistant, OD=5.0mm.
 - * Cable Length Tolerance: 0.1M: ±40mm, 0.2M~0.5M: ±60mm, 0.6M~1.0M: ±100mm, 1.1M~3.0M: ±200mm, 3.1M~9.9M: ±500mm

8-04AMMM-SL7AXX
 XX: 01~99Meters
 01: 01Meter
 02: 02Meters
 99: 99Meters
 Cable Length(L): 01~99Meters

UNIT:mm	TOLERANCE	±0.5 mm
TITLE	M8 Conn	Pin Out
SCALE	Free	SHEET 1 OF 1
REV.	C	SIZE A4
INSPECTION	Item	①

Conn.	Wire Color
1	Brown
2	White
3	Blue
4	Black



X-ON Electronics

Largest Supplier of Electrical and Electronic Components

Click to view similar products for [Circular MIL Spec Connector](#) category:

Click to view products by [Amphenol](#) manufacturer:

Other Similar products are found below :

[89075GULPR](#) [0025-262-542](#) [0025-264-3014](#) [58-570121-04S](#) [0134-213-1208](#) [0134-213-2209](#) [0025-258-000](#) [60-042022-07P](#) [60-042022-19P](#)
[60-042022-23P](#) [60-042217-10P](#) [0114-201-1278](#) [012-0467-000](#) [602GB06EG24-61SN](#) [0134-201-1207](#) [0134-213-1006](#) [6104-207-2302](#) [6104-](#)
[208-1902](#) [61-168211-04P](#) [61-168617-10P](#) [6131-202-19149P](#) [6131-204-21149P](#) [6131-208-13149P](#) [6131-209-17149P](#) [6131-210-11149P](#) [6131-](#)
[211-19149P](#) [6131-216-19149P](#) [6131-259-21149P](#) [6131-259-23149P](#) [6131-265-17149P](#) [6131-265-19149P](#) [CS3100A18-1P-472](#) [CS3100A-36-](#)
[77P](#) [CS3101A-16-55P](#) [CS3102A-10SL-55P](#) [CS3102A-14S-58P](#) [CS3102A-32-17P](#) [CS3102A32-25S](#) [CS3102C18-4P-472](#)
[CS3106A10SL3S004](#) [CS3106A-18-73S](#) [CS3108A-14S-52S](#) [CS3108A-28-51S](#) [6162-233-1277](#) [6162-324-1231](#) [M243082296Z](#)
[M2884010AC1S1](#) [CT0-24-10SC](#) [CT0M20-7PCAU](#) [M28840/17AC1G3](#)