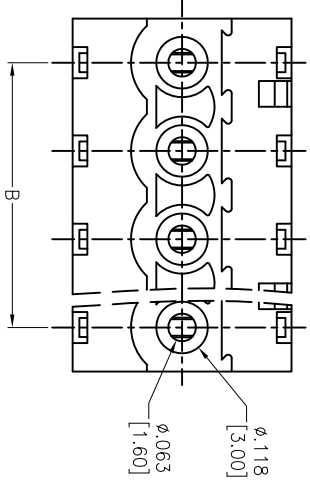
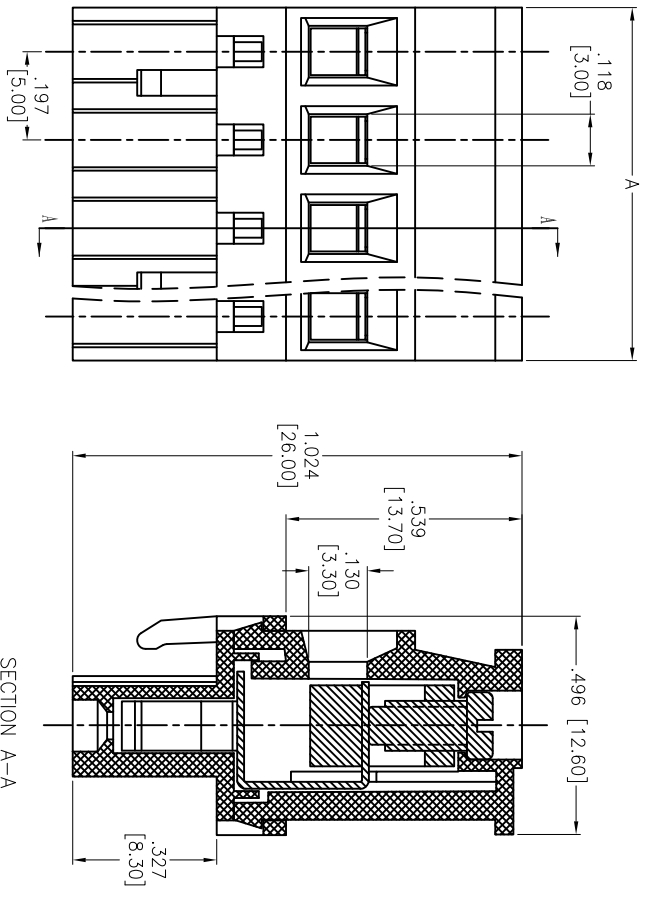


Rev	AWO #	Description	Date	Appr
-		RELEASED	9/18/14	

APPROVED: \_\_\_\_\_  
 DATE: \_\_\_\_\_ TITLE: \_\_\_\_\_



Positions: 2 thru 24  
 A = .197 [5.00] x No. of Positions  
 B = .197 [5.00] x No. of Spaces

**SPECIFICATIONS:**

- Material: PA66, rated UL 94V-0
- Insulator color: Green
- Wire guard: M3, Steel, Zinc plated
- Clamp: Brass, Nickel plated
- Wire guard: Phosphor Bronze, Nickel plated
- Electrical:
  - Operation voltage: 300 VAC
  - Current rating: 15 Amps
  - Contact resistance: 20 mohms max
  - Insulation resistance: 500 Mohms min @ 500 VDC
  - Dielectric withstanding voltage: 2,000 VAC for 1 minute
  - Wire range: 28-14AWG, 2.5mm<sup>2</sup>
  - Torque: 0.5N-m, 4.5lb-in
  - Wire strip length: 7-8mm
  - Temperature Rating:
    - Operating temperature: -40°C to +105°C
    - Environmental: Lead free, RoHS compliant.



**ADAM TECH**

909 Rahway Avenue, Union, NJ 07083  
 Phone: 908-687-5000 Fax: 908-687-5710

EURO BLOCK, .197 [5.00] PITCH

UNLESS OTHERWISE SPECIFIED ALL DIMENSIONS ARE INCHES [MM]		TOLERANCES: EXCEPT AS NOTED	
INCHES	HOLDS	INCHES	HOLDS
.X ± .10	ØXX ± .10	.XX ± .020	ØXXX ± .015
.XXX ± .015	ØXXX ± .010		

APPROVALS	DATE	TITLE
DRAWN	HR	9/18/14
CHECKED	SY	9/18/14
APPROVED		

SIZE	PART NO.	REV.
X	EB9A-XX-C	-

REF: S00067C SCALE: NTS SHEET 1 OF 1

## X-ON Electronics

Largest Supplier of Electrical and Electronic Components

*Click to view similar products for [Pluggable Terminal Blocks](#) category:*

*Click to view products by [Adam](#) manufacturer:*

Other Similar products are found below :

[57.404.7553](#) [57.504.0053.7](#) [57.510.0053](#) [57.910.6153](#) [01.112.1453](#) [CTB932VE/6](#) [MC 1.5/ 6-ST-3.5 GY AU](#) [ET02015000J0G](#) [734-104](#) [734-302](#) [734-304](#) [8-141-P](#) [FKCT 2.5/ 3-ST KMGY](#) [860505](#) [860508](#) [860516](#) [860810](#) [861908](#) [GBPACX-12](#) [93.731.4953.0](#) [PV05-5,08-K](#) [PVP02-5,00](#) [PVP04-3,50](#) [PVS02-5,00](#) [1-1986160-3](#) [H-10](#) [1546228-5](#) [ELFH09150](#) [ELFH16150](#) [ELFP03110](#) [ELFT06250](#) [ELFT07250](#) [ELVF09400](#) [ELVP03100](#) [ELXH03100](#) [ELXH071G0E](#) [ELXP041G0](#) [ELXT046G0](#) [1700101](#) [1700410](#) [1700425](#) [1703176](#) [1705229](#) [1710175](#) [1714537](#) [1717806](#) [1719600](#) [1729386](#) [1734692](#) [1734795](#)