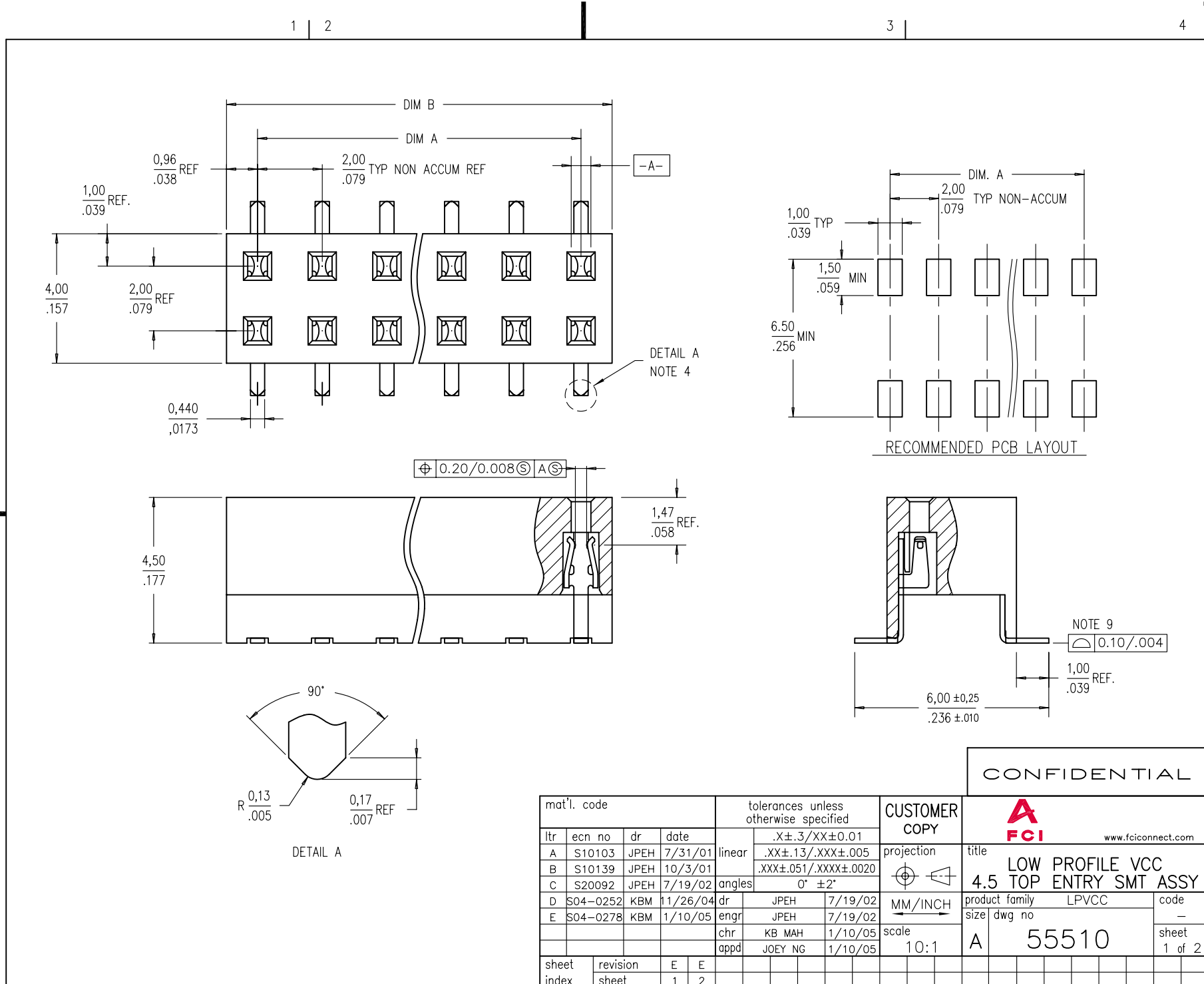


Tous droits strictement reserves. Reproduction ou communication a des tiers interdite sous quelque forme que ce soit sans autorisation ecrite du proprietaire. Propriete de c FCI. Droits de reproduction FCI.

All rights strictly reserved. Reproduction or issue to third parties in any form whatever is not permitted without written authority from the proprietor. Property of FCI. Copyright FCI.



CONFIDENTIAL

mat'l. code				tolerances unless otherwise specified			CUSTOMER COPY		FCI www.fciconnect.com	
ltr	ecn no	dr	date	linear	.X±.3/XX±0.01		projection	title		
A	S10103	JPEH	7/31/01		.XX±.13/.XXX±.005			LOW PROFILE VCC		
B	S10139	JPEH	10/3/01		.XXX±.051/.XXX±.0020			4.5 TOP ENTRY SMT ASSY		
C	S20092	JPEH	7/19/02	angles	0° ±2°			product family LPVCC		code
D	S04-0252	KBM	11/26/04	dr	JPEH	7/19/02		size		—
E	S04-0278	KBM	1/10/05	enr	JPEH	7/19/02	dwg no		sheet	
				chr	KB MAH	1/10/05	A		1 of 2	
				appd	JOEY NG	1/10/05	55510			
sheet index	revision sheet	E	E				scale 10:1			
		1	2							

cage code 22526

ACAD

PDM: Rev:E

STATUS: Released

Printed: Feb 04, 2007

Tous droits strictement reserves. Reproduction ou communication a des tiers interdite sous quelque forme que ce soit sans autorisation ecrite du proprietaire. Propriete de c FCI. Droits de reproduction FCI.

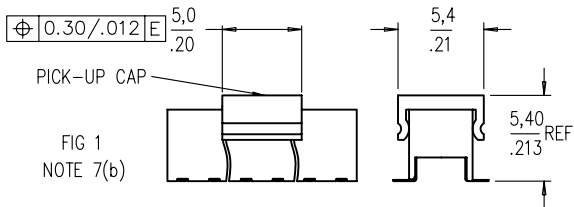
All rights strictly reserved. Reproduction or issue to third parties in any form whatever is not permitted without written authority from the proprietor. Property of FCI. Copyright FCI.

PRODUCT NO	PRODUCT NO	POSITIONS	DIM. A	DIM. B
55510-X04 ⑤	55510-X04LF ⑥⑪	2 X 2	2,00 / ,079	3,92 / ,154
-X06	-X06LF	2 X 3	4,00 / ,158	5,92 / ,233
-X08	-X08LF	2 X 4	6,00 / ,236	7,92 / ,312
-X10	-X10LF	2 X 5	8,00 / ,315	9,92 / ,391
-X12	-X12LF	2 X 6	10,00 / ,394	11,92 / ,469
-X14	-X14LF	2 X 7	12,00 / ,472	13,92 / ,548
-X16	-X16LF	2 X 8	14,00 / ,551	15,92 / ,627
-X18	-X18LF	2 X 9	16,00 / ,630	17,92 / ,706
-X20	-X20LF	2 X 10	18,00 / ,709	19,92 / ,784
-X22	-X22LF	2 X 11	20,00 / ,787	21,92 / ,863
-X24	-X24LF	2 X 12	22,00 / ,866	23,92 / ,942
-X26	-X26LF	2 X 13	24,00 / ,945	25,92 / 1,020
-X28	-X28LF	2 X 14	26,00 / 1,024	27,92 / 1,099
-X30	-X30LF	2 X 15	28,00 / 1,102	29,92 / 1,178
-X32	-X32LF	2 X 16	30,00 / 1,181	31,92 / 1,257
-X34	-X34LF	2 X 17	32,00 / 1,260	33,92 / 1,335
-X36	-X36LF	2 X 18	34,00 / 1,339	35,92 / 1,414
-X38	-X38LF	2 X 19	36,00 / 1,417	37,92 / 1,493
-X40	-X40LF	2 X 20	38,00 / 1,496	39,92 / 1,572
-X42	-X42LF	2 X 21	40,00 / 1,575	41,92 / 1,650
-X44	-X44LF	2 X 22	42,00 / 1,654	43,92 / 1,729
-X46	-X46LF	2 X 23	44,00 / 1,732	45,92 / 1,808
-X48	-X48LF	2 X 24	46,00 / 1,811	47,92 / 1,887
-X50 ⑤	-X50LF ⑥⑪	2 X 25	48,00 / 1,890	49,92 / 1,965

PLATING OPTIONS OVER CONTACT AREA
0 = 0,05um/2u" Au
1 = 0,76um/30u" Au
3 = 0,38um/15u" Au

NOTES :

- HOUSING MAT'L : HIGH TEMP PLASTIC.
- TERMINAL MAT'L : PHOSPHOR BRONZE.
- TERMINAL RETENTION 0,5 Kg/1,1 Lbs.
- 'V' CUT OPTIONAL - MANUFACTURING PROCESS OPTION.
- USE TIN/LEAD PLATED SOLDER TAILS.
- USE 100% MATTE TIN PLATED SOLDER TAILS.
- PRODUCT DESCRIPTION CODE :
 XXXXX-X XXL
 LEAD FREE ⑥⑪
 TOTAL POSITIONS
 PLATING AT CONTACT AREA
 BASE NUMBER
- PACKAGING :
 (a) XXXXX-XXX ---STD PACKAGING IN TUBE.
 (b) XXXXX-XXXTR---TAPE AND REEL PACKAGING WITH PICK-UP CAP (FIG 1).
- CO-PLANARITY :
 FROM POSITION -X04 THRU -X38 : 0,10/.004
 -X40 THRU -X50 : 0,12/.005
- THE HOUSING WILL WITHSTAND EXPOSURE TO 255° C PEAK TEMPERATURE FOR 10 SECONDS IN A CONVECTION, INFRA-RED OR VAPOR PHASE REFLOW OVEN.
- THIS PRODUCT MEETS EUROPEAN UNION DIRECTIVES AND OTHER COUNTRY REGULATIONS AS DESCRIBED IN GS-22-008.



CONFIDENTIAL

mat'l. code		tolerances unless otherwise specified		CUSTOMER COPY		FCI www.fciconnect.com	
ltr	ecn no	dr	date	linear	.X±.3/XX±0.01	projection	title
E				linear	.XX±.13/.XXX±.005		LOW PROFILE VCC 4.5 TOP ENTRY SMT ASSY
				angles	.XXX±.051/.XXX±.0020		
				dr	JPEH 7/19/02	MM/INCH	LPVCC
				enrg	JPEH 7/19/02	scale	size
				chr	KB MAH 1/10/05	10:1	dwg no
				appd	JOEY NG 1/10/05		A
sheet index	revision sheet						55510
							sheet 2 of 2

cage code 22526

X-ON Electronics

Largest Supplier of Electrical and Electronic Components

Click to view similar products for [Headers & Wire Housings](#) category:

Click to view products by [Amphenol](#) manufacturer:

Other Similar products are found below :

[95000-104TRLF](#) [10135584-644402LF](#) [DF62W-EP2022PCA](#) [95000-106TRLF](#) [DF62W-2022SCA](#) [DF62W-EP2022PC](#) [2203348](#) [DF62W-2022SC](#) [1084018](#) [1029039](#) [1084017](#) [802-10-012-10-002000](#) [1112640](#) [1112639](#) [891-007-9SS-BST1T](#) [000-34000](#) [0008550134](#) [0009482033](#) [0009507031](#) [57102-F02-18ULF](#) [57102-S06-03LF](#) [57202-S52-04LF](#) [PCN6-15S-2.5E](#) [0039019024](#) [58102-G61-06LF](#) [582553-1](#) [0009485154](#) [0009508121](#) [0022285053](#) [0050291907](#) [018731A](#) [LY20-4P-DT1-P1E-BR](#) [02.125.8002.8](#) [60101931](#) [60598-1 \(Cut Strip\)](#) [M1625-3R/100](#) [61062-3](#) [61082-181009](#) [CSU011177004](#) [636-1427](#) [638009-1](#) [641938-9](#) [641991-4](#) [644168-1](#) [644827-2](#) [647662-1](#) [65039-019ELF](#) [65692-001LF](#) [65781-018](#) [65781-047](#)