



Products for tomorrow...

Headquarter Europe
 MEDER electronic AG
 Friedrich-List Strasse 6
 D-78234 Engen-Welschingen
 Tel.: +49(0)7733-9487-0
 Fax: +49(0)7733-9487-32
 eMail: info@meder.com
 Internet: www.meder.com

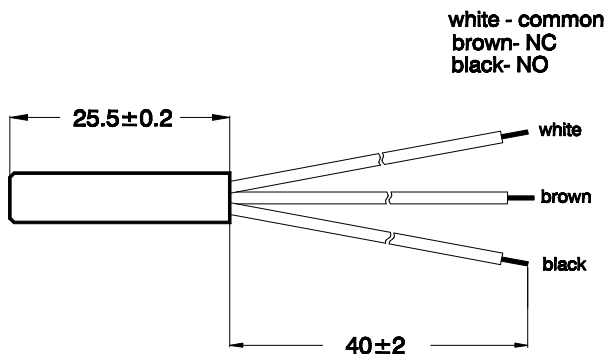
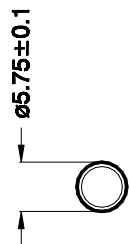
Headquarter USA
 MEDER electronic Inc.
 766 Falmouth Rd
 Mashpee, MA 02649
 Phone: +1/ 508-539-0002
 Fax: +1/ 508-539-4088
 eMail: salesusa@meder.com

Reed Sensor: MK3-1C90B-BV10450

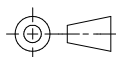
Part Number: 2230010450

Dimensions (mm)

Marking



MEDER-Label
 Type
 Production-Code-EN60062/Factory Code



Magnetic Characteristics	Conditions at 20°C	Min.	Typ.	Max.	Units
Pull-In Switch unmodified	Testcoil KMS-01	10		15	AT
Drop Out Switch unmodified	Testcoil	-		-	AT
Pull-In Switch modified	Testcoil KMS-13	22		44	AT
Drop Out Switch modified	Testcoil	-		-	AT

Contact Data 90F (Form C/Dry)					
Contact Rating	Any combination of the switching voltage and current must not exceed the given rated power			10	W
Switching Voltage	DC or Peak AC			175	V
Switching Current	DC or Peak AC			0,5	A
Carry Current	DC or Peak AC			1,0	A
Static Contact Resistance (initial)	Measured with 40% overdrive			150	mΩ
Insulation Resistance	RH 45%	10 ⁹			Ω
Breakdown Voltage		200			VDC
Operate Time, including Bounce	Measured with 40% overdrive			2,6	ms
Release Time				0,1	ms
Capacitance			0,8		pF

Environmental Data					
Shock	½ sine wave, duration 11ms			50	g
Vibration	from 50 - 2000 Hz			30	g
Operating Temperature	10°C/min max. allowable	-20		80	°C
Storage Temperature	10°C/min max. allowable	-20		80	°C
Soldering Temperature	5 sec. at			260	°C
Contact Resistance with Cable	Measured with 40% overdrive			160	mΩ
Cleaning				fully sealed	
Material of Case				non-reinforced semi-crystalline polybutylene terephthalate /PBTP)	
Sealing Compound				Epoxy resin	
Cable	3 x single wire LiYV/T 0,14 mm ² , Colour of wire: brown, black, white Ends of cable with approx. 5 mm tined leads				
Remarks					

Customer /Customer part number **MESIT pristroje spol. s.r.o.**

X-ON Electronics

Largest Supplier of Electrical and Electronic Components

Click to view similar products for [Proximity Sensors](#) category:

Click to view products by [MEDER](#) manufacturer:

Other Similar products are found below :

[01.001.5653.1](#) [70.340.1028.0](#) [70.360.2428.0](#) [70.364.4828.0](#) [70.810.1053.0](#) [72.360.1628.0](#) [73.363.6428.0](#) [9221350022](#) [980659-1](#) [QT-12](#)
[E2EX10D1NN](#) [E2E-X14MD1-G](#) [E2E-X2D1-G](#) [E2EX2ME2N](#) [E2E-X3D1-N](#) [10M](#) [E2E-X4MD1-G](#) [E2FMX1R5D12M](#) [E2K-F10MC1](#) [5M](#)
[EI1204TBOSL-6](#) [EI5515NPAP](#) [BSA-08-25-08](#) [IC08ANC15PO-K](#) [IMM2582C](#) [25.161.3253.0](#) [25.332.0653.1](#) [25.352.0653.0](#) [25.352.0753.0](#)
[25.523.3253.0](#) [9151710023](#) [922FS1.5C-A4P-Z774](#) [SC606ABV0S30](#) [SM952A126100LE](#) [SM956A132600](#) [A1220EUA-T](#) [F3S-A162-U](#) [CL18](#)
[QT-08L](#) [34.110.0010.0](#) [TL-C2MF1-M3-E4](#) [IA08BLF15NOM5](#) [IA08BSF15NOM5](#) [IA12ASF04DOM1](#) [IMM32188C](#) [IS2](#) [IS31SE5000-](#)
[UTLS2-TR](#) [34.110.0021.0](#) [34.110.0022.0](#) [CA150-120VACDC](#) [VM18VA3000Q](#) [XS508BSCBL2](#)