

S5H RELAY

SHORI

◆ Features

- 0.45W and 0.2W coil are available .
- Switching capacity relay for high density.
- Standard PC layout
- SPNO,SPNC,SPDT configuration.
- Sealed type available.



◆ Coil Data [at 23°C]

- Standard Type

Rated voltage (V)	Coil Resistance ±10% (Ω)	Rated Current ±10% (mA)	Pick up Voltage (Max)	Drop out Voltage (Min)	Max continuous Voltage	Power consumption At rated Voltage
3	20	150	75% of rated voltage	5% of rated voltage	150% Max of Rated voltage	Approx.0.45W
5	55	90				
6	80	75				
9	180	50				
12	320	37.5				
18	720	25				
24	1280	18.8				
48	5120	9.3				

- High sensitivity Type

Rated voltage (V)	Coil Resistance ±10% (Ω)	Rated Current ±10% (mA)	Pick up Voltage (Max)	Drop out Voltage (Min)	Max continuous Voltage	Power consumption At rated Voltage
3	45	67	75% of rated voltage	5% of rated voltage	150% Max of Rated voltage	Approx.0.2W
5	125	40				
6	180	33.3				
9	405	22.2				
12	720	16.7				
18	1620	11				
24	2890	8.3				
48	11520	4.1				

◆ Contact Rating

TYPE	Contact rating (Res. Load)
1C (SPDT)	3A 250VAC, 3A 30VDC
1A (SPNO)	5A 250VAC, 5A 30VDC, 8A 250VAC, 10A 125VAC, TV-5 125VAC
1B (SPNC)	5A 250VAC, 5A 30VDC, 10A 125VAC, TV-3 125VAC, 200W/125VAC Tungsten

S5H RELAY

SHORI

◆ Type List

Terminal style	Contact form	Type	Designation(provided with)
PCB terminal	1A (SPNO)	Standard type	S5H-12-1AS
	1B (SPNC)		S5H-12-1BS
	1C (SPDT)		S5H-12-1CS
	1A (SPNO)	High sensitivity	S5H-12B-1AS
	1B (SPNC)		S5H-12B-1BS
	1C (SPDT)		S5H-12B-1CS

◆ Ordering information

S5 H - 12 B - 1A S
1 2 3 4

1. S5H -- Basic series designation
2. 12 -- Coil Voltage (3V~48V)
3. B -- High sensitivity.
Blank -- Standard type

4. 1AS -- Form A, normally open (SPNO),
Sealed type washable.
- 1BS -- Form B, normally closed (SPNC),
Sealed type washable
- 1CS -- Form C, Double-throw(SPDT)
Sealed type washable.

◆ Specification

Contact material	Ag Alloy	
Contact resistance	100 mΩ Max	
Operate time	10 ms Max	
Release time	5 ms Max	
Insulation resistance	100 MΩ (at 500VDC)	
Dielectric strength	Between open contact : AC 1000V ,50/60Hz 1 min.	
	Between contact and coil : AC 2500V, 50/60Hz 1 min.	
Vibration resistance	Operating extremes	10~50Hz, amplitude 1.0 mm
	Damage limits	10~50Hz, amplitude 1.0 mm
Shock resistance	Functional	10G
	Destructive	100G
Life expectancy	Mechanical	10,000,000 operations
	Electrical	100,000 operations
Ambient temperature	Standard: -40°C to 70°C	
Weight	Approx. 6g	

◆ Safety Approval

Certified	UL/CUL	TUV
File No.	E188091	R 50178751

S5H RELAY

SHORI

◆ Safety Approval Rating

UL/CUL	
1C (SPDT)	3A 250VAC, 3A 30VDC
1A (SPNO)	5A 250VAC, 5A 30VDC, 8A 250VAC, 10A 125VAC, TV-5 125VAC
1B (SPNC)	5A 250VAC, 5A 30VDC, 10A 125VAC, TV-3 125VAC, 200W/125VAC Tungsten

◆ Outline Dimensions



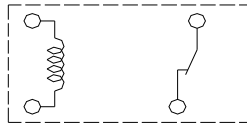
◆ Wiring Diagram

BOTTOM VIEW

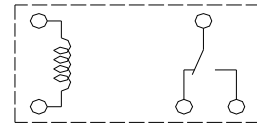
1A



1B



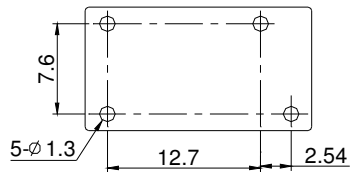
1C



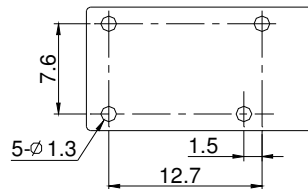
◆ PC BOARD LAYOUT

BOTTOM VIEW

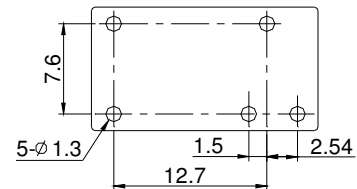
1A



1B



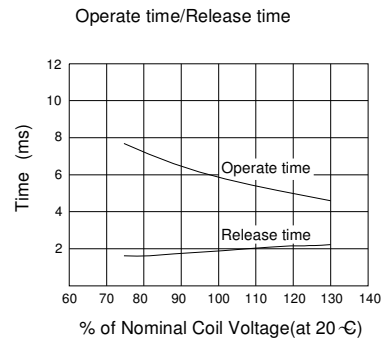
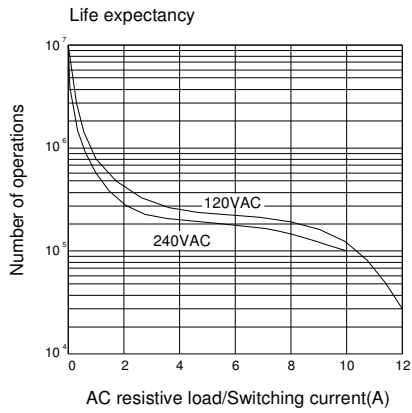
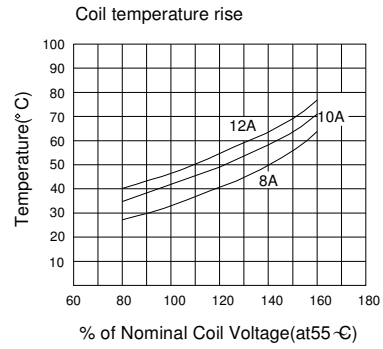
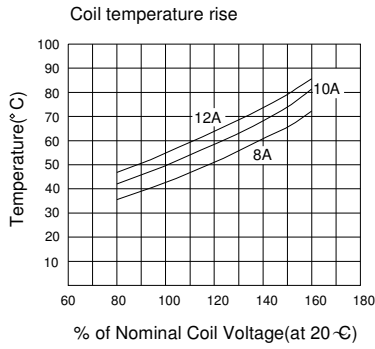
1C



S5H RELAY

SHORI

◆ Engineering Data



X-ON Electronics

Largest Supplier of Electrical and Electronic Components

Click to view similar products for [General Purpose Relays](#) category:

Click to view products by [Shori](#) manufacturer:

Other Similar products are found below :

[APF30318](#) [JVN1AF-4.5V-F](#) [PCN-105D3MHZ](#) [5JO-10000S-SIL](#) [5JO-1000CD-SIL](#) [5JO-400CD-SIL](#) [LY2S-AC220/240](#) [LYQ20DC12](#)
[6031007G](#) [6131406HQ](#) [6-1393099-3](#) [6-1393099-8](#) [6-1393122-4](#) [6-1393123-2](#) [6-1393767-1](#) [6-1393843-7](#) [6-1415012-1](#) [6-1419102-2](#) [6-1423698-4](#) [6-1608051-6](#) [6-1608067-0](#) [6-1616170-6](#) [6-1616248-2](#) [6-1616282-3](#) [6-1616348-2](#) [6-1616350-1](#) [6-1616350-8](#) [6-1616358-7](#) [6-1616359-9](#) [6-1616360-9](#) [6-1616931-6](#) [6-1617039-1](#) [6-1617052-1](#) [6-1617090-2](#) [6-1617090-5](#) [6-1617347-5](#) [6-1617353-3](#) [6-1617801-8](#) [6-1617802-2](#) [6-1618107-9](#) [6-1618248-4](#) [M83536/1-027M](#) [CX-4014](#) [MAHC-5494](#) [MAVCD-5419-6](#) [703XCX-120A](#) [7-1393100-5](#) [7-1393111-7](#)
[7-1393144-5](#) [7-1393767-8](#)