

Fishino UNO

Fishino UNO is a prototyping board based on Atmega 328p.controller.

It's fully compatible with Arduino UNO boards, retaining its layout, pinout and functions, but enhancing it with WiFi connection, an SD card slot and an RTC controller with battery backup.:

The usage of on-board peripherals is very simple thanks to a complete set of software libraries and demos available for download.

Fishino UNO

Power supply:

- 5Volt from microUSB connector
- 5 Volt in +5V pin
- from 7 to 15 Volt on Vin input
- from 7 to 15 Volt on supply plug

Digital levels :

- 5 Volt

Controller :

- 8 bit Atmega 328p-au SMD

Clock :

- 16 MHz

Memory :

- 32 KBytes Flash
- 2 KBytes RAM
- 1 KBytes EEPROM

I/O ports :

- 14 digital ports of which 6 PWM enabled
- 6 analogic inputs
- 2-6 additional 3.3V digital I/O on WiFi module'
- 1 additional serial port on WiFi module
- 1 additional analog input on WiFi module

Available interfaces :

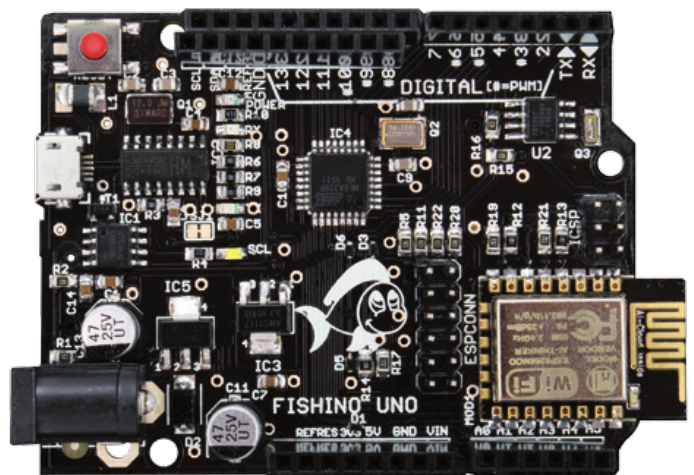
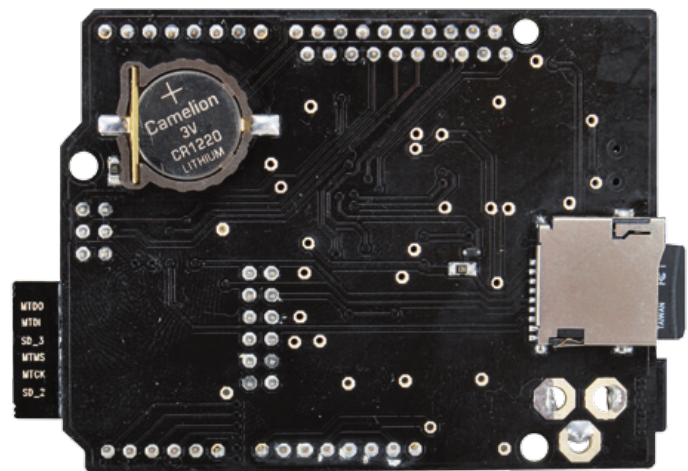
- 1 x SPI
- 1 x I2C

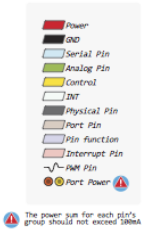
Additional modules on board :

- WiFi
- microSD connector
- RTC module with backup battery

Special features :

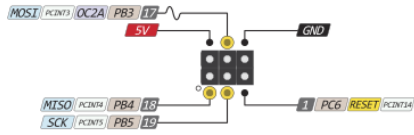
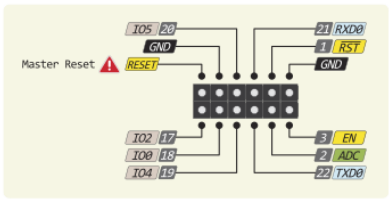
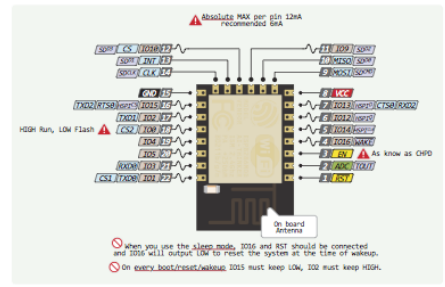
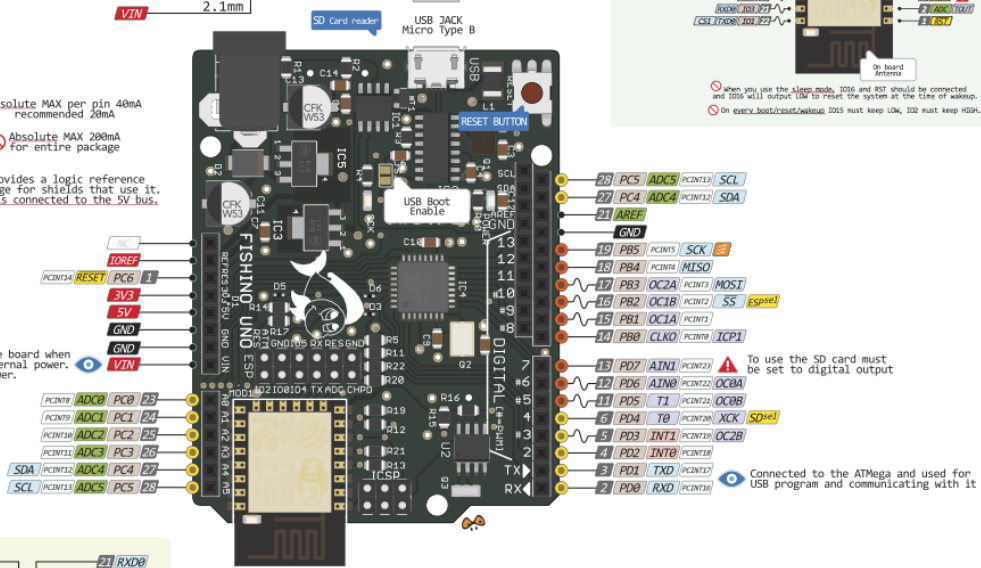
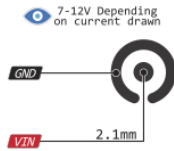
- Enhanced 3.3V supply regulator
- Sketches can be uploaded by WiFi





⚠ Absolute MAX per pin 40mA recommended 20mA
 ⚠ Absolute MAX 200mA for entire package
 ⚡ **!VOREF!** provides a logic reference voltage for shields that use it. It is connected to the 5V bus.

The input voltage to the board when it is running from external power. Not USB bus power.



Links :

Official website, with technical details, libraries, demo, apps and firmware updates:
www.fishino.com

Open-Electronics website with an overview of all Fishino boards family, technical details, articles and demos:
www.open-electronics.org/tag/fishino/

X-ON Electronics

Largest Supplier of Electrical and Electronic Components

Click to view similar products for [Development Boards & Kits - Other Processors](#) category:

Click to view products by [Futura](#) manufacturer:

Other Similar products are found below :

[KIT_AURIX_TC233LP_TRB](#) [EVB-MEC1418MECC](#) [SPC56XVTOP-M](#) [ADZS-BF506F-EZLITE](#) [ADZS-SADA2-BRD](#) [20-101-1252](#)
[T1023RDB-PC](#) [20-101-1267](#) [T1042D4RDB-PA](#) [ML610Q174](#) [REFERENCE BOARD](#) [MPC574XG-MB](#) [BSC9132QDS](#) [C29XPCIE-RDB](#)
[KIT_TC1793_SK](#) [CC-ACC-18M433](#) [P1010RDB-PB](#) [P1020RDB-PD](#) [P2020COME-DS-PB](#) [STM8S/32-D/RAIS](#) [T4240RDB-PB](#) [TRK-USB-](#)
[MPC5604B](#) [TWR-56F8200](#) [CY3674](#) [SPC58XXADPT176S](#) [MAX1464EVKIT](#) [TRK-MPC5606B](#) [RTE510Y470TGB00000R](#) [STM8128-](#)
[MCKIT](#) [MAXQ622-KIT#](#) [YRPBRL78G11](#) [SPC58EEMU](#) [QB-R5F10JGC-TB](#) [YQB-R5F11BLE-TB](#) [SPC564A70AVB176](#)
[RTE5117GC0TGB00000R](#) [QB-R5F100LE-TB](#) [YR0K50571MS000BE](#) [YQB-R5F1057A-TB](#) [QB-R5F104PJ-TB](#) [CC-ACC-ETHMX](#)
[LFM34INTPQA](#) [SPC563M64A176S](#) [Y-BLDC-SK-RL78F14](#) [P1021RDB-PC](#) [SPC58XCADPT176S](#) [RTE510MPG0TGB00000R](#)
[YRPBRX71M](#) [LFMAJ04PLT](#) [KITAURIXTC234LPSTRBTOBO1](#) [OV-7604-C7-EVALUATION-BOARD](#)