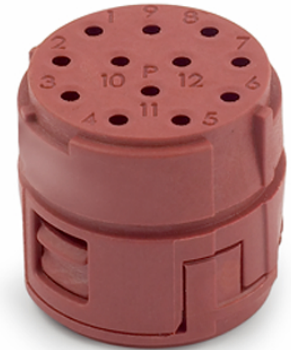


U.I. Lapp GmbH	<h1>DATASHEET</h1>	
	<b>EPIC® KIT M23 A3 12-POL MALE</b>	25009704 29.11.2013

Inserts for M23 circular connectors  
 Universal further processing of the M23 inserts through different packaging units. Fully assembled with suitable solder contacts or unpopulated for individual assembly with crimp or solder contacts



Good chemical resistance



Industrial machinery and plant engineering



Mechanical resistance



Assembly time



Robust



Wind Energy



Variety of approval certifications

### Application range

Plant engineering  
 Measurement and control technology  
 Apparatus construction

### Remark

The inserts are suitable for both male and female contacts. For a complete connection, you will need one P-component and one E-component. P-component = left turning (anticlockwise), E-component = right turning (clockwise)  
 Photographs are not to scale and do not represent detailed images of the respective products.

Product Management	Document: EPIC® KIT M23 A3 12-POL MALE	1 / 6
--------------------	--	-------

U.I. Lapp GmbH	<b>DATASHEET</b>	
	<b>EPIC® KIT M23 A3 12-POL MALE</b>	<b>25009704</b> <b>29.11.2013</b>

### Technical Data


Article number:	25009704
Rated voltage (V):	according to IEC 61984: 100 V
Rated impulse voltage:	1.5 kV
Rated current (A):	7 A
Contact resistance:	< 4 mOhm
Contacts:	Gold-plated brass
Number of contacts:	12
Termination methods:	Crimp termination: 0.14 - 1.0 mm <sup>2</sup> Solder termination: up to 1.0 mm <sup>2</sup>
Cycle of mechanical operation:	100
Temperature range:	-25°C až +125°C
VDE-tested:	Certified production control: VDE-REG. no. C24 (according to EN 61984, SELV according to DIN VDE 0100-410 has to be guaranteed) UL File Number: E249137
Degree of soiling:	3

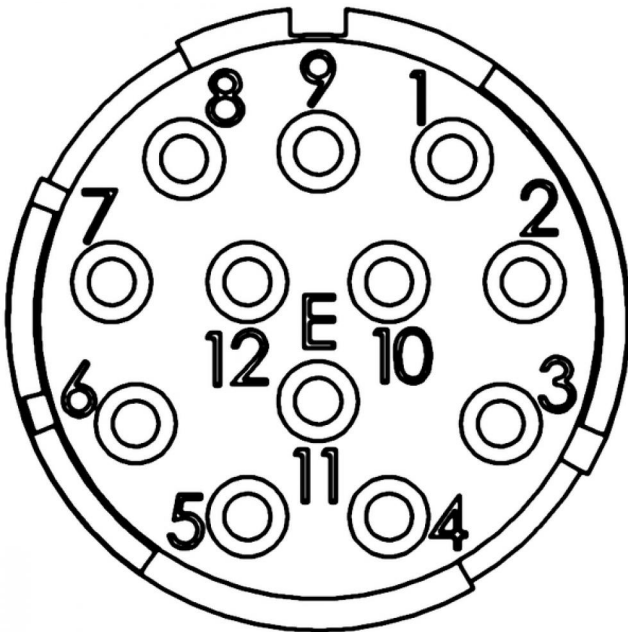
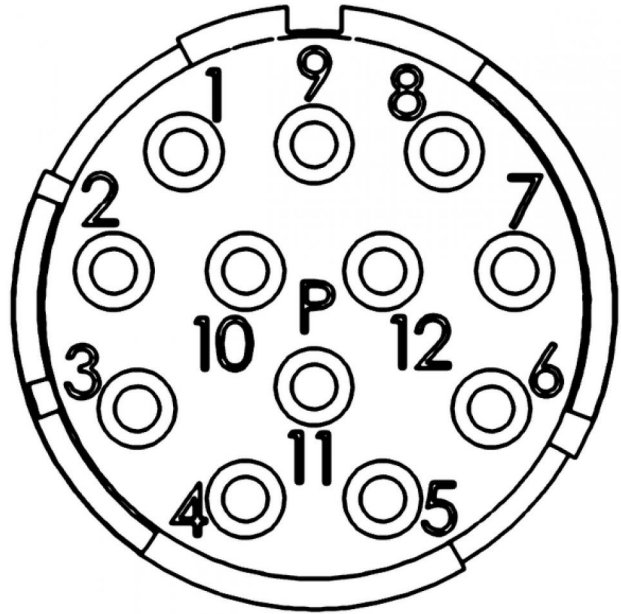
Product Management	Document: EPIC® KIT M23 A3 12-POL MALE	2 / 6
--------------------	--	-------

U.I. Lapp GmbH	<h1>DATASHEET</h1>	
	<b>EPIC® KIT M23 A3 12-POL MALE</b>	25009704 29.11.2013



Product Management	Document: EPIC® KIT M23 A3 12-POL MALE	3 / 6
--------------------	--	-------

U.I. Lapp GmbH	<b>DATASHEET</b>	 <b>LAPP GROUP</b>
	<b>EPIC® KIT M23 A3 12-POL MALE</b>	25009704 29.11.2013



Product Management	Document: EPIC® KIT M23 A3 12-POL MALE	4 / 6
--------------------	--	-------

U.I. Lapp GmbH	<b>DATASHEET</b>	
	<b>EPIC® KIT M23 A3 12-POL MALE</b>	<b>25009704</b> <b>29.11.2013</b>

Circular connectors for Servo Cables and encoders  
Housings are very flexible - cable connectors with wide clamping range,  
receptacle housings for assembling the inserts from the front and rear  
Permanent vibration protection



Good chemical resistance



Industrial machinery and plant engineering



Robust



Wind Energy

#### Info

Rotateable with clearly defined adjustment positions

#### Application range

Plant engineering  
Servo drives and servo assemblies  
Measurement and control technology


#### Remark

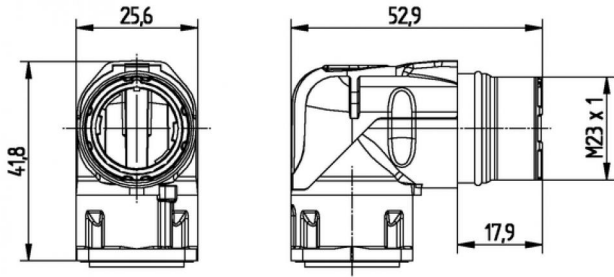
Photographs are not to scale and do not represent detailed images of the respective products.

#### Technical Data

Article number:	25009704
Material:	Housing: nickel-plated zinc die-casting Sealing: FPM
Protection rating:	IP 65
Temperature range:	-25°C až +125°C
VDE-tested:	Certified production control: VDE-REG. no. C24 (according to EN 61984, SELV according to DIN VDE 0100-410 has to be guaranteed) UL File Number: E249137

Product Management	Document: EPIC® KIT M23 A3 12-POL MALE	5 / 6
--------------------	--	-------

U.I. Lapp GmbH	<h1>DATASHEET</h1>	 <b>LAPP GROUP</b>
	<b>EPIC® KIT M23 A3 12-POL MALE</b>	<b>25009704</b> <b>29.11.2013</b>



Product Management	Document: EPIC® KIT M23 A3 12-POL MALE	6 / 6
--------------------	--	-------

## X-ON Electronics

Largest Supplier of Electrical and Electronic Components

*Click to view similar products for [Circular MIL Spec Connector](#) category:*

*Click to view products by [Lapp Kabel](#) manufacturer:*

Other Similar products are found below :

[89075GULPR](#) [0025-262-542](#) [0025-264-3014](#) [58-570121-04S](#) [0134-213-1208](#) [0134-213-2209](#) [0025-258-000](#) [60-042022-07P](#) [60-042022-19P](#)  
[60-042022-23P](#) [60-042217-10P](#) [0114-201-1278](#) [012-0467-000](#) [602GB06EG24-61SN](#) [0134-201-1207](#) [0134-213-1006](#) [6104-207-2302](#) [6104-](#)  
[208-1902](#) [61-168211-04P](#) [61-168617-10P](#) [6131-202-19149P](#) [6131-204-21149P](#) [6131-208-13149P](#) [6131-209-17149P](#) [6131-210-11149P](#) [6131-](#)  
[211-19149P](#) [6131-216-19149P](#) [6131-259-21149P](#) [6131-259-23149P](#) [6131-265-17149P](#) [6131-265-19149P](#) [CS3100A18-1P-472](#) [CS3100A-36-](#)  
[77P](#) [CS3101A-16-55P](#) [CS3102A-10SL-55P](#) [CS3102A-14S-58P](#) [CS3102A-32-17P](#) [CS3102A32-25S](#) [CS3102C18-4P-472](#)  
[CS3106A10SL3S004](#) [CS3106A-18-73S](#) [CS3108A-14S-52S](#) [CS3108A-28-51S](#) [6162-233-1277](#) [6162-324-1231](#) [M243082296Z](#)  
[M2884010AC1S1](#) [CT0-24-10SC](#) [CT0M20-7PCAU](#) [M28840/17AC1G3](#)