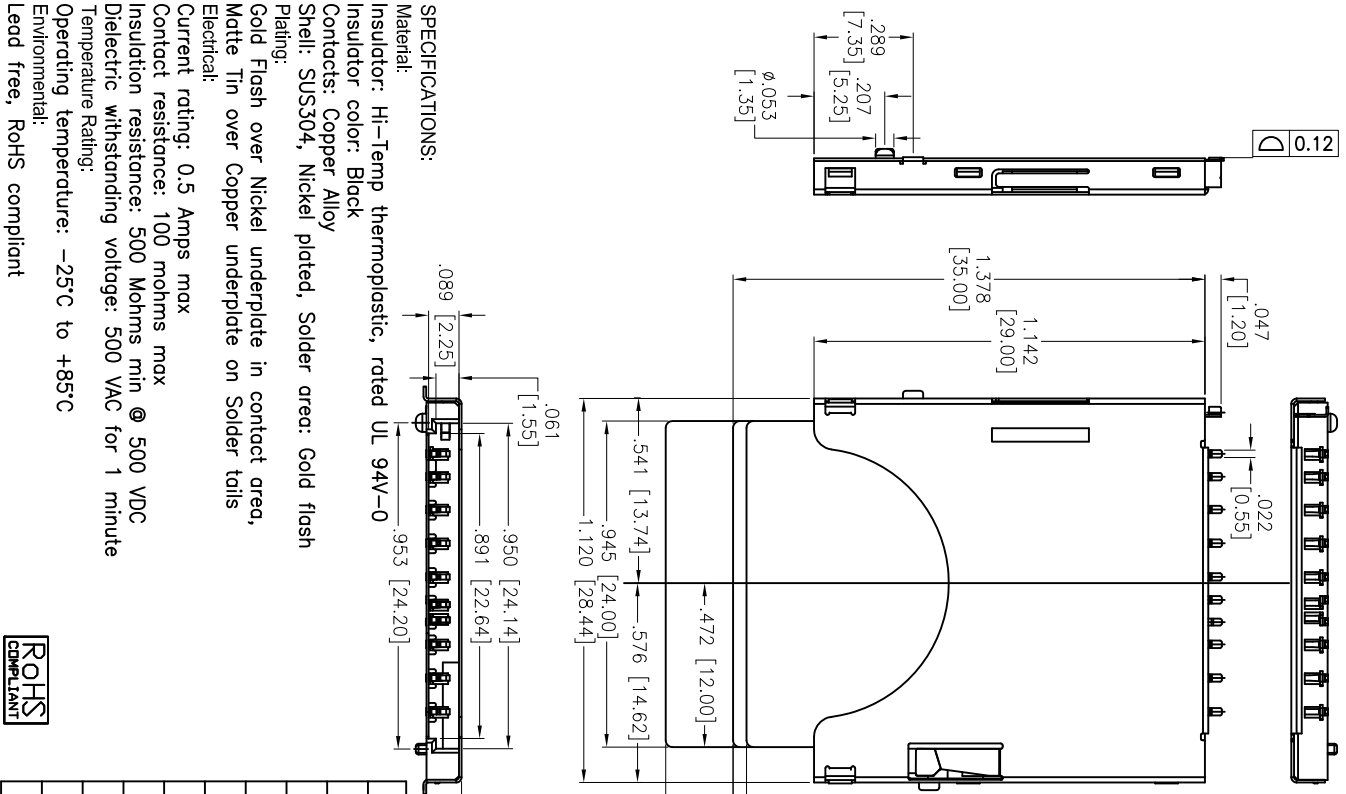
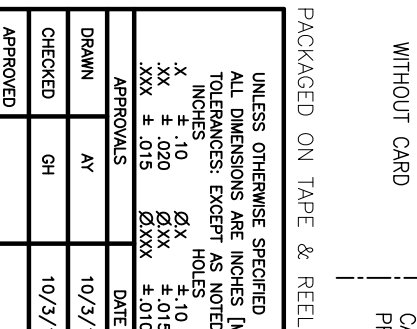


Rev	AWO #	Description	Date	Appr
-		RELEASED	10/3/13	

APPROVED: \_\_\_\_\_ DATE: \_\_\_\_\_  
 TITLE: \_\_\_\_\_



PIN NO.	NAME
#1	CD/DAT3
#2	CMD
#3	VSS1
#4	VDD
#5	CLK
#6	VSS2
#7	DAT0
#8	DAT1
#9	DAT2



UNLESS OTHERWISE SPECIFIED	ALL DIMENSIONS ARE INCHES [MM]
TOLERANCES: EXCEPT AS NOTED	
INCHES	HOLES
.X ± .10	ØXX ± .10
.XX ± .020	ØXXX ± .015
.XXX ± .015	ØXXXX ± .010
APPROVALS	DATE
DRAWN AY	10/3/13
CHECKED GH	10/3/13
APPROVED	

**ADAM TECH**  
 909 Railway Avenue, Union, NJ 07083  
 Phone: 908-687-5000 Fax: 908-687-5710

TITLE: SECURE DIGITAL SOCKET, PUSH-PUSH  
 CARD LOCK TYPE, SHELL SPOT OUTSIDE

SIZE: X PART NO.: SDP-09M-SG-T/R  
 REF: S00108C SCALE: NTS SHEET 1 OF 2

**A**  
 SPECIFICATIONS:  
 Material: Hi-Temp thermoplastic, rated UL 94V-0  
 Insulator color: Black  
 Contacts: Copper Alloy  
 Shell: SUS304, Nickel plated, Solder area: Gold flash  
 Plating:  
 Gold Flash over Nickel underplate in contact area,  
 Matte Tin over Copper underplate on Solder tails  
 Electrical:  
 Current rating: 0.5 Amps max  
 Contact resistance: 100 mohms max @ 500 VDC  
 Insulation resistance: 500 Mohms min @ 500 VDC  
 Dielectric withstanding voltage: 500 VAC for 1 minute  
 Temperature Rating:  
 Operating temperature: -25°C to +85°C  
 Environmental:  
 Lead free, RoHS compliant

**B**

**C**

**D**

**A**

**B**

**C**

**D**

**A**

**B**

**C**

**D**

**A**

**B**

**C**

**D**

**A**

## X-ON Electronics

Largest Supplier of Electrical and Electronic Components

*Click to view similar products for [Memory Card Connectors](#) category:*

*Click to view products by [Adam](#) manufacturer:*

Other Similar products are found below :

[M10-597810-355](#) [M21-033321-005](#) [6426-201-21343](#) [69.920.0553.0](#) [MCR60A-98D-2.54DSA\(70\)](#) [FCN-568P068-G/07-4V](#) [809180410000000](#)  
[95622-003LF](#) [AD2-262F-38900-232](#) [DM3AT-SF-PEJM5\(41\)](#) [EN2997S72039F6](#) [N7E50-7516PG-20-WF](#) [IC11S-BUR-PNEJL\(71\)](#) [NX30TA-](#)  
[15PAA\(50\)](#) [21920-5](#) [2041353-2](#) [FUA006-3220-0](#) [308-DS1P0811-192](#) [33CFAE-DN](#) [MI21A-50PD-SF-EJR\(91\)](#) [502431-1011](#) [5175651-2](#) [10-](#)  
[247926-166](#) [10-629549-258N](#) [11327-001](#) [11327-002](#) [EN2997S02039B8](#) [EN2997S61212BN](#) [EN2997S72039B6](#) [EN2997SE02039B8](#)  
[EN2997SE61212BN](#) [EN2997SE72039B6](#) [603020000](#) [617230001](#) [71-252718-32P](#) [NX1-32T-KT3K\(05\)](#) [95622-003LF](#) [91-570124-15P](#)  
[192900-0488](#) [N7E50-U516RB-50-SIN0005](#) [DM1AA-SF-PEJ](#) [95079-00CALF](#) [84648-056HLF](#) [68-580163-21S](#) [33DVIR-29S12R](#)  
[SF58S006VBBR2000](#) [93-570123-08P](#) [GMC020080HR](#) [125A-78C00](#) [1010040575#](#)