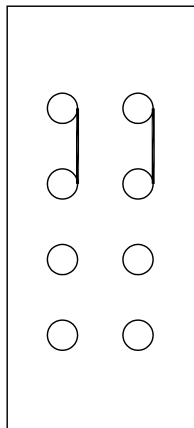
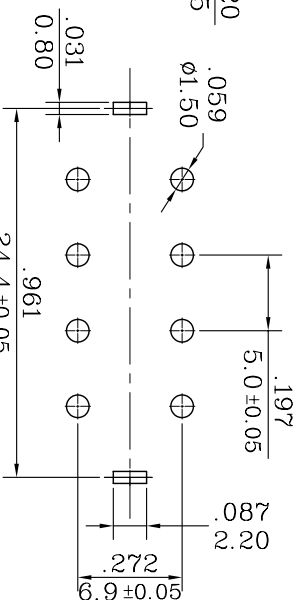
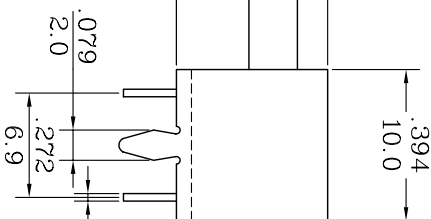
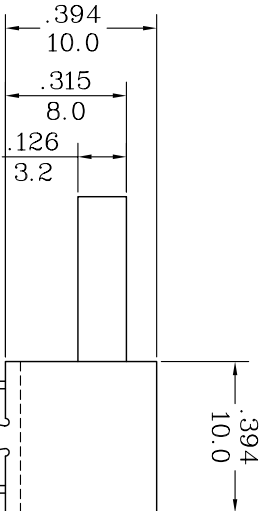
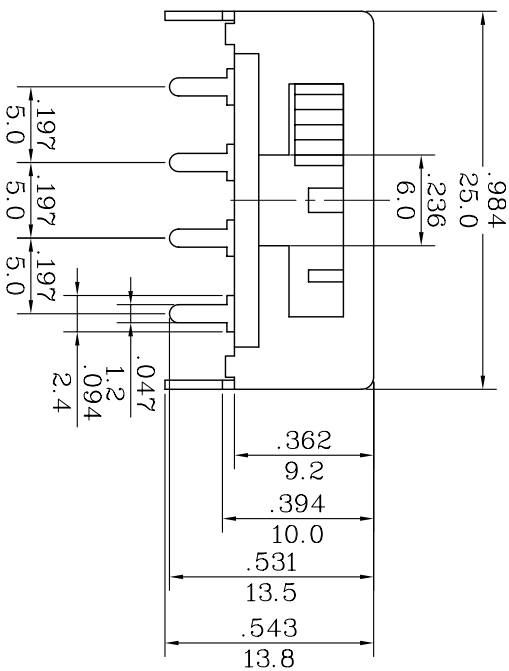


SCHEMATIC DIAGRAM



SLIDE SWITCH: MODEL SL13
 RATING: 1A 125VDC
 CIRCUIT: DOUBLE POLES TRIPLE THROW
 CONTACT RESISTANCE: 20mΩ (MAX)
 DIELECTRIC STRENGTH: 1000VAC FOR 1 MINUTE
 CYCLE: 100,000.
 OPERATION FORCE: 300±200g



P.C. BOARD HOLE



NOTE: TOLERANCES UNLESS OTHERWISE SPECIFIED: $\pm \frac{.12}{0.3}$ (in/mm)

修正 REVISION	說明 DESCRIPTION	核准 APPROVAL BY	公差 TOLERANCES	設計 DESIGNED BY	比例尺 SCALE	單位 DIMENSION UNIT	版次 VER	處理 FINISH
			.XX±0.05	馮紅崗	2:1	mm	*	
			繪圖 DRAWN BY	馮紅崗	日期 DATE	品名 TITLE		
			核對 CHECKED BY	核對	2003.03.05	SL13-213C		
				核准 APPROVED BY		圖號 DRAWING NO		
						圖號 DRAWING NO		
						圖號 DRAWING NO		
						圖號 DRAWING NO		

X-ON Electronics

Largest Supplier of Electrical and Electronic Components

Click to view similar products for [Slide Switches](#) category:

Click to view products by [Canal manufacturer](#):

Other Similar products are found below :

[6-1437581-1](#) [M43R](#) [MHS123K15D](#) [MHSS1104A](#) [MMD](#) [GH49S010001](#) [GH49WW00001](#) [1437576-8](#) [EPS1PC1](#) [1825074-1](#) [1825160-3](#)
[1825167-2](#) [25139NLDB](#) [25436NLDB](#) [25449NAH](#) [25536NA](#) [L101011ML04B](#) [SLB1240R45](#) [SLSA12004](#) [1825078-1](#) [1825080-4](#) [1825081-1](#)
[1825269-1](#) [1825270-2](#) [STS141RA04](#) [T2215BEN506](#) [GF-124-0204](#) [GH46P000001](#) [GH46W000001](#) [GH49P010001](#) [25339NA](#) [25436NLDH](#)
[CST91246FK](#) [TG36P000000](#) [TG36P000050](#) [47227LFE](#) [49331L](#) [MHSS1105A](#) [50208L](#) [HW4S-5LF22N3](#) [L202091MS02Q](#) [4-1437581-7](#)
[X2225CR-437W](#) [48BFSP3M2QT](#) [49329L](#) [1101M1S3ZB8E2](#) [1-1437581-1](#) [EG1218REDACTUATOR](#) [TG39W000000](#) [1825075-1](#)