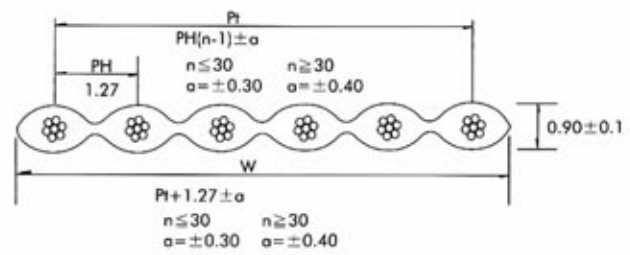


UL & CSA GRADE:

UL STYLE : 20029
 Rate temperature : 105°C
 Rate voltage : 300V
 Flame Test : VW-1

CSA STYLE : C22.2 No.210.2
 Rate temperature : 105°C
 Rate voltage : 300V
 Flame Test : FT1,FT2

CONSTRUCTION DRAWING :



CONDUCTOR: Stranded

AWG size : 28 AWG
 Number of strands in each conductor : 7/0. 127mm
 Lay of strands in each conductor : 0.5 inch at least
 Cross sec. area : 156mil

USAGE :

Internal connection for computer, duplicator, facsimile, game, interface and many other electronic equipments.

INSULATION :

Material of insulation : polyvinyl chloride (PVC) ten colors available
 Extruded PVC insulated singles bonded together
 Insulation thickness average : 9mil
 Min. insulation thickness : 7mil

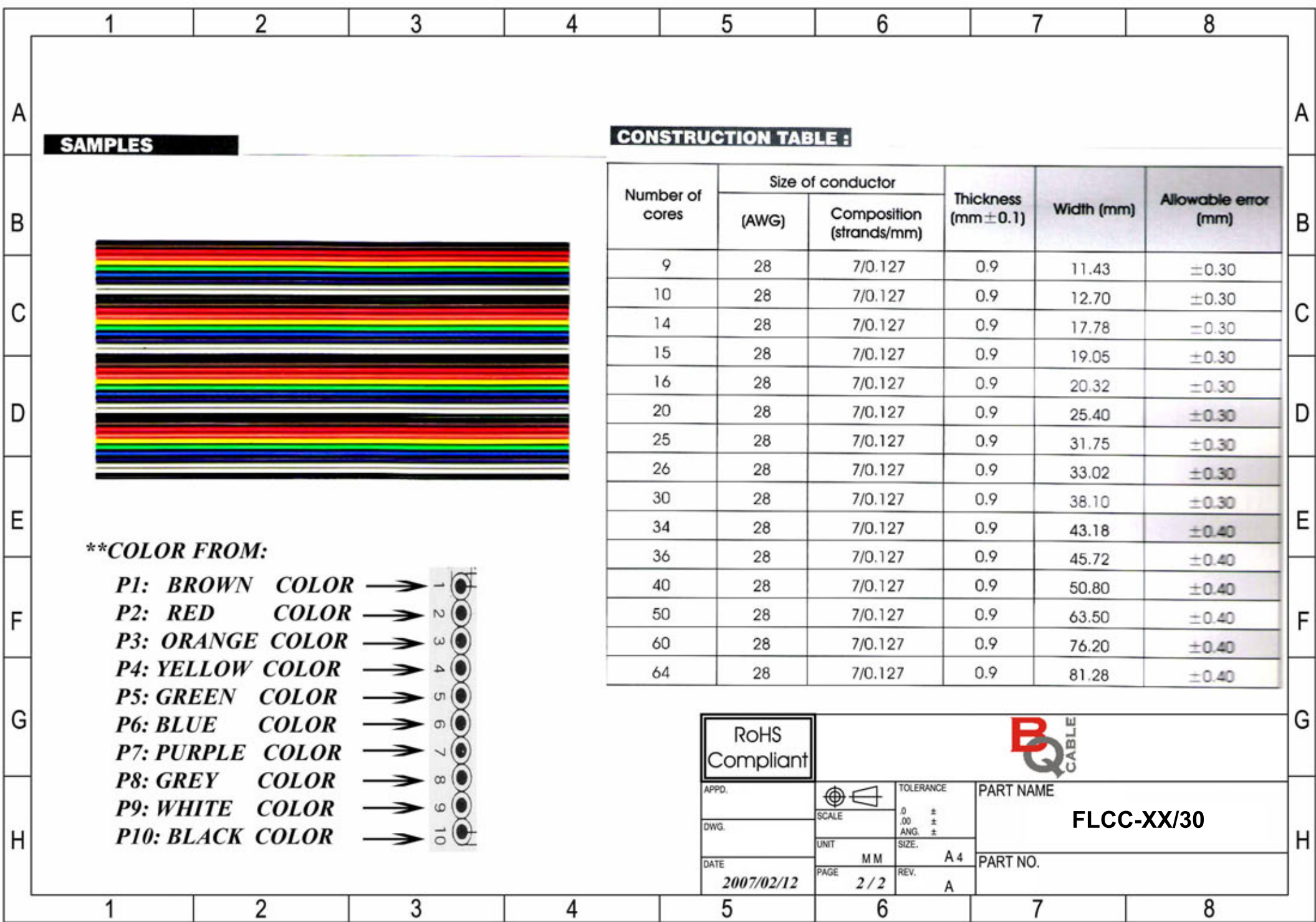
PHYSICAL PROPERTIES: after 7 days air oven at 136°C

Average tensile strength : 1500 lbs/inch²
 Percent of original : 70% at least
 Average elongation : 200%
 Percent of original : 65% at least

ELECTRONIC CHARACTERISTICS :

Spark test : 2500V
 Dielectric strength test : min. 2 KV in 1 minute
 Conductor resistance : Max. 237 Ω/km
 Insulation resistance : Min. 100MΩ/km
 Capacity : 45pF/m
 Inductance : 1.5 μH/m
 Impedance : 100Ω
 Propagation Delay Time : 4.2ns/m

APPD.		TOLERANCE	PART NAME
DWG.		.0 ±	
DATE	SCALE	ANG. ±	PART NO.
2007/02/12	UNIT	SIZE.	
	PAGE	REV.	A
	2 / 1		



SAMPLES



CONSTRUCTION TABLE :

Number of cores	Size of conductor		Thickness (mm ±0.1)	Width (mm)	Allowable error (mm)
	(AWG)	Composition (strands/mm)			
9	28	7/0.127	0.9	11.43	±0.30
10	28	7/0.127	0.9	12.70	±0.30
14	28	7/0.127	0.9	17.78	±0.30
15	28	7/0.127	0.9	19.05	±0.30
16	28	7/0.127	0.9	20.32	±0.30
20	28	7/0.127	0.9	25.40	±0.30
25	28	7/0.127	0.9	31.75	±0.30
26	28	7/0.127	0.9	33.02	±0.30
30	28	7/0.127	0.9	38.10	±0.30
34	28	7/0.127	0.9	43.18	±0.40
36	28	7/0.127	0.9	45.72	±0.40
40	28	7/0.127	0.9	50.80	±0.40
50	28	7/0.127	0.9	63.50	±0.40
60	28	7/0.127	0.9	76.20	±0.40
64	28	7/0.127	0.9	81.28	±0.40

****COLOR FROM:**

- P1: BROWN COLOR → 1
- P2: RED COLOR → 2
- P3: ORANGE COLOR → 3
- P4: YELLOW COLOR → 4
- P5: GREEN COLOR → 5
- P6: BLUE COLOR → 6
- P7: PURPLE COLOR → 7
- P8: GREY COLOR → 8
- P9: WHITE COLOR → 9
- P10: BLACK COLOR → 10

RoHS Compliant



APPD.		TOLERANCE	PART NAME
DWG.		0.00 ±	
DATE	SCALE	ANG. ±	PART NO.
2007/02/12	UNIT	SIZE. A 4	
	PAGE	REV. A	
	2 / 2		

X-ON Electronics

Largest Supplier of Electrical and Electronic Components

Click to view similar products for [Ribbon Cables / IDC Cables](#) category:

Click to view products by [BQ Cable](#) manufacturer:

Other Similar products are found below :

[FSK-12A Ribbon Cable, 6 Pin, 500mm](#) [AWG28-10G EHV3C EHV4C EHV5C](#) [cab-LVDV-PWR-10-15 FSP-25A Ribbon Cable, 4 Pin, 350mm](#)
[Ribbon Cable, 6 Pin, 300mm](#) [cab-LVDV-DAT-34-15](#) [49635-C62-S2](#) [1-3636-600-5204](#) [92315-1408](#) [100063-0094](#) [100063-0106](#) [100063-0102](#)
[100063-0104](#) [MMSD-02-20C-F-15.00-S-K](#) [100063-0099](#) [100063-0105](#) [100063-0095](#) [100063-0103](#) [100063-0093](#) [100063-0091](#) [2200000068](#)
[100063-0092](#) [100063-0101](#) [100063-0100](#) [100063-0097](#) [TFSDT-08-28-H-15.00-S](#) [S1SD-02-30-GF-09.00-L](#) [MMSD-02-22C-F-15.00-S-K](#)
[S1SS-02-28C-GF-02.00-L](#) [S1SDT-02-28-GF-03.00-L](#) [2-1589735-3](#) [JSM015PP2DCC23N](#) [92301-0283](#) [TCSD-22-D-26.00-01](#) [S1SST-07-30-](#)
[GF-06.00-L](#) [T2SD-20-24-L-07.87-TR-NUS](#) [DS1057-01-44A282R-30.5](#) [FFSD-06-S-17.00-01-N](#) [IDSS-03-D-20.00-T](#) [TCMD-17-S-36.00-01-](#)
[SR](#) [92301-0718](#) [839023](#) [490107670612S](#) [MMSDT-06-20-S-05.5-D-K-LDX](#) [IDD-04-G](#)