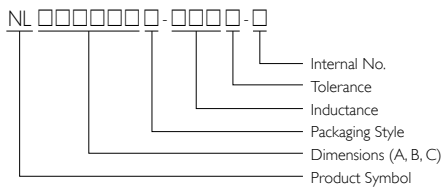


SMD Wire Wound Chip Inductors

NL Series



PRODUCT IDENTIFICATION



- Packaging: T = Tape and Reel, B = Bulk
- Internal No.: N = Lead-Free

APPLICATIONS

Microtelevisions, liquid crystal televisions, video cameras, portable VCRs, car radios, car stereos, thin tape radios, television tuners, mobile telephones, radios and other electronic devices.

OUTLINE

These revolutionary, highly reliable wound chip inductors for automatic mounting have been developed in response to the trend toward high density in electronic equipment.

FEATURES

Very strong solderability by reflow soldering and soldering iron or wave soldering.

Highly accurate dimensions can be mounted automatically.

Terminals are highly resistant to pull forces.

Highly resistant to mechanical shocks and pressure.

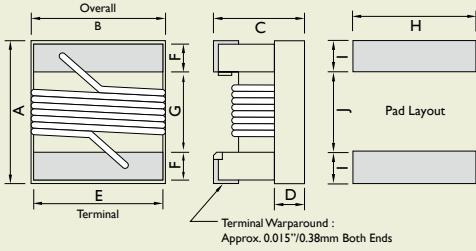
Highly reliable in environments of sudden temperature change and humidity.

Superior Q characteristics and the broadest L selections among peers.

SHAPES AND DIMENSIONS

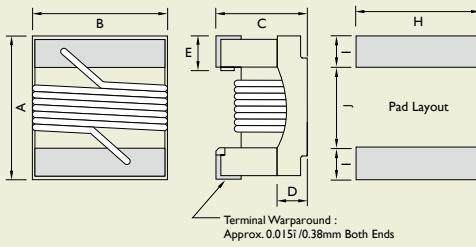
Unit: mm

NL201614



| TYPE | A | B | C | D | E | F | G | H | I | J |
|----------|------|------|------|------|------|-----|------|------|------|------|
| | Max. | Max. | Max. | Ref. | | | | | | |
| NL201614 | 2.4 | 1.72 | 1.52 | 0.7 | 1.27 | 0.5 | 1.02 | 1.78 | 1.02 | 0.76 |

NL252018



| TYPE | A | B | C | D | E | F | G | H | I | J |
|----------|------|------------|------|------|------|---|---|------|------|------|
| | Max. | Max. | Max. | Ref. | | | | | | |
| NL252018 | 2.92 | 2.5 / 2.79 | 2.2 | 0.51 | 0.51 | - | - | 2.54 | 1.02 | 1.27 |

NL252018 B Max: at 5N0~R10 = 2.79 mm, at R12~I01 = 2.50 mm



ELECTRICAL CHARACTERISTICS NL201614

| PART NO. | INDUCTANCE (μH) | TOLERANCE ($\pm\%$) | Q Min. | TEST FREQUENCY (MHz) | SRF (MHz) Min. | DC RESISTANCE (Ω) Max. | RATED CURRENT (mA) Max. | COLOR CODING |
|------------------|---------------------------------|--------------------------|-----------|----------------------------|-------------------|---------------------------------------|-------------------------------|-----------------|
| NL201614T-R12□-N | 0.12 | 5 / 10 | 25 | 25.20 | 500 | 0.20 | 600 | White |
| NL201614T-R15□-N | 0.15 | 5 / 10 | 25 | 25.20 | 450 | 0.25 | 600 | Black |
| NL201614T-R18□-N | 0.18 | 5 / 10 | 25 | 25.20 | 410 | 0.30 | 570 | Brown |
| NL201614T-R22□-N | 0.22 | 5 / 10 | 25 | 25.20 | 350 | 0.35 | 550 | Red |
| NL201614T-R27□-N | 0.27 | 5 / 10 | 25 | 25.20 | 280 | 0.40 | 530 | Orange |
| NL201614T-R33□-N | 0.33 | 5 / 10 | 25 | 25.20 | 235 | 0.45 | 510 | Yellow |
| NL201614T-R39□-N | 0.39 | 5 / 10 | 25 | 25.20 | 210 | 0.50 | 490 | Green |
| NL201614T-R47□-N | 0.47 | 5 / 10 | 25 | 25.20 | 170 | 0.55 | 470 | Blue |
| NL201614T-R56□-N | 0.56 | 5 / 10 | 25 | 25.20 | 150 | 0.60 | 450 | Violet |
| NL201614T-R68□-N | 0.68 | 5 / 10 | 25 | 25.20 | 140 | 0.70 | 420 | Gray |
| NL201614T-R82□-N | 0.82 | 5 / 10 | 25 | 25.20 | 130 | 0.75 | 400 | White |
| NL201614T-1R0□-N | 1.00 | 5 / 10 | 15 | 7.96 | 115 | 0.80 | 350 | Black |
| NL201614T-1R2□-N | 1.20 | 5 / 10 | 15 | 7.96 | 95 | 0.90 | 325 | Brown |
| NL201614T-1R5□-N | 1.50 | 5 / 10 | 15 | 7.96 | 85 | 1.05 | 300 | Red |
| NL201614T-1R8□-N | 1.80 | 5 / 10 | 15 | 7.96 | 80 | 1.20 | 270 | Orange |
| NL201614T-2R2□-N | 2.20 | 5 / 10 | 15 | 7.96 | 75 | 1.40 | 250 | Yellow |
| NL201614T-2R7□-N | 2.70 | 5 / 10 | 15 | 7.96 | 70 | 1.60 | 230 | Green |
| NL201614T-3R3□-N | 3.30 | 5 / 10 | 15 | 7.96 | 60 | 1.80 | 210 | Blue |
| NL201614T-3R9□-N | 3.90 | 5 / 10 | 15 | 7.96 | 55 | 2.00 | 190 | Violet |
| NL201614T-4R7□-N | 4.70 | 5 / 10 | 15 | 7.96 | 45 | 2.40 | 170 | Gray |
| NL201614T-5R6□-N | 5.60 | 5 / 10 | 15 | 7.96 | 40 | 2.70 | 150 | White |
| NL201614T-6R8□-N | 6.80 | 5 / 10 | 15 | 7.96 | 36 | 3.20 | 140 | Black |
| NL201614T-8R2□-N | 8.20 | 5 / 10 | 15 | 7.96 | 33 | 3.60 | 120 | Brown |
| NL201614T-100□-N | 10.0 | 5 / 10 | 15 | 2.52 | 30 | 4.50 | 110 | Red |
| NL201614T-120□-N | 12.0 | 5 / 10 | 15 | 2.52 | 25 | 5.70 | 105 | Orange |
| NL201614T-150□-N | 15.0 | 5 / 10 | 15 | 2.52 | 23 | 6.50 | 90 | Yellow |
| NL201614T-180□-N | 18.0 | 5 / 10 | 15 | 2.52 | 21 | 7.00 | 85 | Green |
| NL201614T-220□-N | 22.0 | 5 / 10 | 15 | 2.52 | 20 | 8.00 | 78 | Blue |
| NL201614T-270□-N | 27.0 | 5 / 10 | 15 | 2.52 | 18 | 9.00 | 75 | Violet |
| NL201614T-330□-N | 33.0 | 5 / 10 | 15 | 2.52 | 17 | 10.00 | 70 | Gray |

Note:

When ordering, please specify tolerance and packaging codes.

Tolerance: J = $\pm 5\%$, K = $\pm 10\%$

Packaging: Clear tape and reel (standard)

Test Instruments: L/Q- Agilent/HP4291A+Agilent/HP16197A

SRF- Agilent/HP4291A

RDC- CH502BC/ HP4338B

IDC- For Inductance drop 10% from its value without current

Operating Temperature Range: -25 °C to +85 °C

ELECTRICAL CHARACTERISTICS NL252018

| PART NO. | INDUCTANCE (μ H) | TOLERANCE (\pm %) | Q Min. | TEST FREQUENCY (MHz) | SRF (MHz) Min. | DC RESISTANCE (Ω) Max. | RATED CURRENT (mA) Max. | COLOR CODING | | |
|------------------|--------------------------|-------------------------|-----------|----------------------------|----------------------|---------------------------------------|-------------------------------|-----------------|-----------------|-----------------|
| | | | | | | | | 1 st | 2 nd | 3 rd |
| NL252018T-5N0□-N | 0.005 | 10 | 10 | 100 | 3,000 | 0.25 | 2,000 | Black | Green | Black |
| NL252018T-10N□-N | 0.010 | 10 | 10 | 100 | 2,500 | 0.25 | 1,800 | Brown | Black | Black |
| NL252018T-12N□-N | 0.012 | 10 | 15 | 100 | 2,400 | 0.26 | 1,700 | Brown | Red | Black |
| NL252018T-15N□-N | 0.015 | 10 | 15 | 100 | 2,300 | 0.28 | 1,600 | Brown | Green | Black |
| NL252018T-18N□-N | 0.018 | 10 | 15 | 100 | 2,200 | 0.30 | 1,550 | Brown | Gray | Black |
| NL252018T-22N□-N | 0.022 | 5 / 10 | 20 | 100 | 2,100 | 0.35 | 1,500 | Red | Red | Black |
| NL252018T-27N□-N | 0.027 | 5 / 10 | 20 | 100 | 2,000 | 0.40 | 1,450 | Red | Violet | Black |
| NL252018T-33N□-N | 0.033 | 5 / 10 | 30 | 100 | 1,600 | 0.42 | 1,400 | Orange | Orange | Black |
| NL252018T-39N□-N | 0.039 | 5 / 10 | 35 | 100 | 1,500 | 0.45 | 1,350 | Orange | White | Black |
| NL252018T-47N□-N | 0.047 | 5 / 10 | 35 | 100 | 1,400 | 0.50 | 1,300 | Yellow | Violet | Black |
| NL252018T-56N□-N | 0.056 | 5 / 10 | 35 | 100 | 1,300 | 0.60 | 1,250 | Green | Blue | Black |
| NL252018T-68N□-N | 0.068 | 5 / 10 | 35 | 100 | 1,200 | 0.65 | 1,240 | Blue | Gray | Black |
| NL252018T-82N□-N | 0.082 | 5 / 10 | 35 | 100 | 1,100 | 0.75 | 1,230 | Gray | Red | Black |
| NL252018T-R10□-N | 0.10 | 5 / 10 | 35 | 100 | 800 | 0.80 | 1,220 | Brown | Black | Brown |
| NL252018T-R12□-N | 0.12 | 5 / 10 | 30 | 25.20 | 700 | 0.30 | 900 | Brown | Red | Brown |
| NL252018T-R15□-N | 0.15 | 5 / 10 | 30 | 25.20 | 550 | 0.35 | 900 | Brown | Green | Brown |
| NL252018T-R18□-N | 0.18 | 5 / 10 | 30 | 25.20 | 500 | 0.40 | 850 | Brown | Gray | Brown |
| NL252018T-R22□-N | 0.22 | 5 / 10 | 30 | 25.20 | 450 | 0.50 | 840 | Red | Red | Brown |
| NL252018T-R27□-N | 0.27 | 5 / 10 | 30 | 25.20 | 425 | 0.55 | 830 | Red | Violet | Brown |
| NL252018T-R33□-N | 0.33 | 5 / 10 | 30 | 25.20 | 400 | 0.60 | 820 | Orange | Orange | Brown |
| NL252018T-R39□-N | 0.39 | 5 / 10 | 30 | 25.20 | 375 | 0.65 | 810 | Orange | White | Brown |
| NL252018T-R47□-N | 0.47 | 5 / 10 | 30 | 25.20 | 350 | 0.68 | 800 | Yellow | Violet | Brown |
| NL252018T-R56□-N | 0.56 | 5 / 10 | 30 | 25.20 | 325 | 0.75 | 800 | Green | Blue | Brown |
| NL252018T-R68□-N | 0.68 | 5 / 10 | 30 | 25.20 | 300 | 0.85 | 800 | Blue | Gray | Brown |
| NL252018T-R82□-N | 0.82 | 5 / 10 | 30 | 25.20 | 260 | 1.00 | 800 | Gray | Red | Brown |
| NL252018T-1R0□-N | 1.00 | 5 / 10 | 25 | 7.96 | 245 | 1.10 | 800 | Brown | Black | Red |
| NL252018T-1R2□-N | 1.20 | 5 / 10 | 25 | 7.96 | 230 | 1.20 | 790 | Brown | Red | Red |
| NL252018T-1R5□-N | 1.50 | 5 / 10 | 25 | 7.96 | 182 | 1.30 | 750 | Brown | Green | Red |
| NL252018T-1R8□-N | 1.80 | 5 / 10 | 25 | 7.96 | 135 | 1.45 | 750 | Brown | Gray | Red |
| NL252018T-2R2□-N | 2.20 | 5 / 10 | 25 | 7.96 | 105 | 1.55 | 750 | Red | Red | Red |
| NL252018T-2R7□-N | 2.70 | 5 / 10 | 25 | 7.96 | 70 | 1.70 | 740 | Red | Violet | Red |
| NL252018T-3R3□-N | 3.30 | 5 / 10 | 25 | 7.96 | 55 | 1.90 | 730 | Orange | Orange | Red |
| NL252018T-3R9□-N | 3.90 | 5 / 10 | 25 | 7.96 | 48 | 2.10 | 700 | Orange | White | Red |



ELECTRICAL CHARACTERISTICS NL252018

| PART NO. | INDUCTANCE (μ H) | TOLERANCE (\pm %) | Q Min. | TEST FREQUENCY (MHz) | SRF (MHz) Min. | DC RESISTANCE (Ω) Max. | RATED CURRENT (mA) Max. | COLOR CODING | | |
|------------------|--------------------------|-------------------------|-----------|----------------------------|----------------------|---------------------------------------|-------------------------------|-----------------|-----------------|-----------------|
| | | | | | | | | 1 st | 2 nd | 3 rd |
| NL252018T-4R7□-N | 4.70 | 5 / 10 | 25 | 7.96 | 43 | 2.30 | 650 | Yellow | Violet | Red |
| NL252018T-5R6□-N | 5.60 | 5 / 10 | 20 | 7.96 | 42 | 2.50 | 640 | Green | Blue | Red |
| NL252018T-6R8□-N | 6.80 | 5 / 10 | 20 | 7.96 | 39 | 2.70 | 630 | Blue | Gray | Red |
| NL252018T-8R2□-N | 8.20 | 5 / 10 | 20 | 7.96 | 36 | 3.05 | 600 | Gray | Red | Red |
| NL252018T-100□-N | 10.0 | 5 / 10 | 15 | 2.52 | 33 | 3.50 | 600 | Brown | Black | Orange |
| NL252018T-120□-N | 12.0 | 5 / 10 | 15 | 2.52 | 30 | 3.80 | 550 | Brown | Red | Orange |
| NL252018T-150□-N | 15.0 | 5 / 10 | 15 | 2.52 | 26 | 4.40 | 430 | Brown | Green | Orange |
| NL252018T-180□-N | 18.0 | 5 / 10 | 15 | 2.52 | 24 | 4.80 | 400 | Brown | Gray | Orange |
| NL252018T-220□-N | 22.0 | 5 / 10 | 15 | 2.52 | 22 | 5.50 | 400 | Red | Red | Orange |
| NL252018T-270□-N | 27.0 | 5 / 10 | 15 | 2.52 | 21 | 6.30 | 360 | Red | Violet | Orange |
| NL252018T-330□-N | 33.0 | 5 / 10 | 15 | 2.52 | 20 | 7.10 | 350 | Orange | Orange | Orange |
| NL252018T-390□-N | 39.0 | 5 / 10 | 10 | 2.52 | 18 | 9.50 | 330 | Orange | White | Orange |
| NL252018T-470□-N | 47.0 | 5 / 10 | 10 | 2.52 | 17 | 11.10 | 300 | Yellow | Violet | Orange |
| NL252018T-560□-N | 56.0 | 5 / 10 | 10 | 2.52 | 16 | 12.10 | 270 | Green | Blue | Orange |
| NL252018T-680□-N | 68.0 | 5 / 10 | 10 | 2.52 | 15 | 16.60 | 250 | Blue | Gray | Orange |
| NL252018T-820□-N | 82.0 | 5 / 10 | 10 | 2.52 | 13 | 19.00 | 200 | Gray | Red | Orange |
| NL252018T-101□-N | 100 | 5 / 10 | 8 | 0.796 | 12 | 21.00 | 120 | Brown | Black | Yellow |

Note:

When ordering, please specify tolerance and packaging codes.

Tolerance: J = \pm 5%, K = \pm 10%

Packaging: Clear tape and reel (standard)

Test Instruments: L/Q- Agilent/HP4291A+Agilent/HP16197A (over 1MHz) or Agilent/HP4285A+ Agilent/HP16197A (under 1MHz)

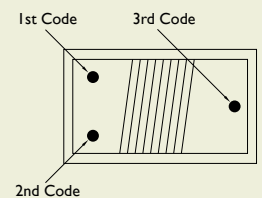
SRF- Agilent/HP8753D+Agilent/HP4291A

RDC- Digital Multimeter CH502BC/HP4338B

IDC- For Inductance drop 10% from its value without current

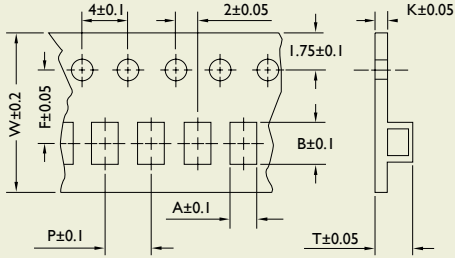
Operating Temperature Range: -25 °C to +85 °C

Color Coding



TAPE DIMENSIONS

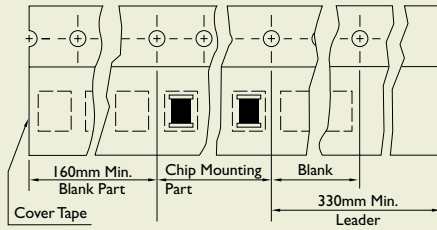
Unit: mm



| TYPE | A | B | K | W | P | F | T |
|--------------------|------|------|------|---|---|-----|------|
| NL201614 | 1.85 | 2.45 | 0.23 | 8 | 4 | 3.5 | 1.45 |
| NL252018 (5N0~R10) | 2.80 | 2.95 | 0.23 | 8 | 4 | 3.5 | 2.20 |
| NL252018 (R12~101) | 2.61 | 2.93 | 0.26 | 8 | 4 | 3.5 | 2.25 |

TAPE MATERIAL

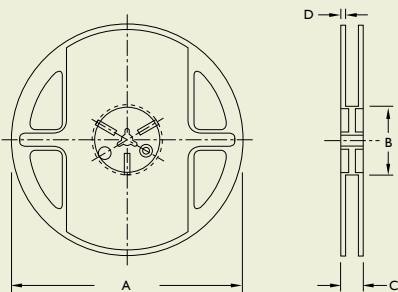
PACKAGING QUANTITY



| TYPE | QUANTITY/REEL |
|--------------------|---------------|
| NL201614 | 2,000 |
| NL252018 (5N0~R10) | 2,000 |
| NL252018 (R12~101) | 2,000 |

REEL DIMENSIONS

Unit: mm



| TYPE | A | B | C | D |
|--------------------|-----|----|----|-----|
| NL201614 | 178 | 60 | 12 | 1.5 |
| NL252018 (5N0~R10) | 178 | 60 | 12 | 1.5 |
| NL252018 (R12~101) | 178 | 60 | 12 | 1.5 |

X-ON Electronics

Largest Supplier of Electrical and Electronic Components

Click to view similar products for [Multilayer Ceramic Capacitors MLCC - SMD/SMT](#) category:

Click to view products by [Yageo](#) manufacturer:

Other Similar products are found below :

[M39014/01-1467](#) [M39014/02-1218V](#) [M39014/02-1225V](#) [M39014/02-1262V](#) [M39014/02-1301](#) [M39014/22-0631](#) [1210J5000102JCT](#)
[1210J2K00102KXT](#) [1210J5000103KXT](#) [1210J5000223KXT](#) [D55342E07B379BR-TR](#) [D55342E07B523DR-T/R](#) [1812J1K00103KXT](#)
[1812J1K00473KXT](#) [1812J2K00680JCT](#) [1812J4K00102MXT](#) [1812J5000102JCT](#) [1812J5000103JCT](#) [1812J5000682JCT](#) [NIN-FB391JTRF](#)
[NIN-FC2R7JTRF](#) [NPIS27H102MTRF](#) [C1206C101J1GAC](#) [C1608C0G1E472JT000N](#) [C2012C0G2A472J](#) [2220J2K00101JCT](#)
[KHC201E225M76N0T00](#) [LRC-LRF1206LF-01R025FTR1K](#) [1812J1K00222JCT](#) [1812J2K00102KXT](#) [1812J2K00222KXT](#)
[1812J2K00472KXT](#) [2-1622820-7-CUT-TAPE](#) [2220J3K00102KXT](#) [2225J2500824KXT](#) [CCR07CG103KM](#) [CGA2B2C0G1H010C](#)
[CGA2B2C0G1H040C](#) [CGA2B2C0G1H050C](#) [CGA2B2C0G1H060D](#) [CGA2B2C0G1H070D](#) [CGA2B2C0G1H151J](#) [CGA2B2C0G1H1R5C](#)
[CGA2B2C0G1H2R2C](#) [CGA2B2C0G1H3R3C](#) [CGA2B2C0G1H680J](#) [CGA2B2C0G1H6R8D](#) [CGA2B2X8R1H221K](#) [CGA2B2X8R1H472K](#)
[CGA3E1X7R1C474K](#)