

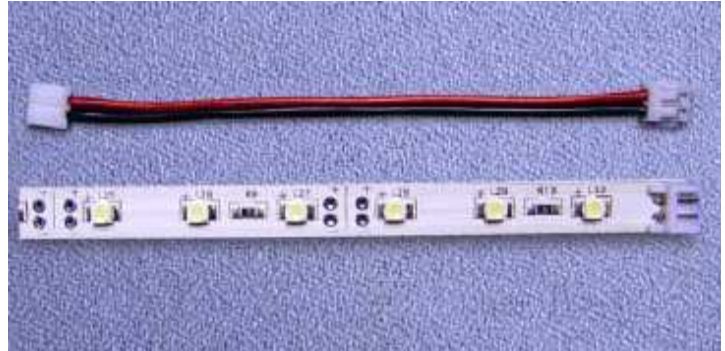


LIGHT BAR SERIES

OF-LBS3528B BLUE



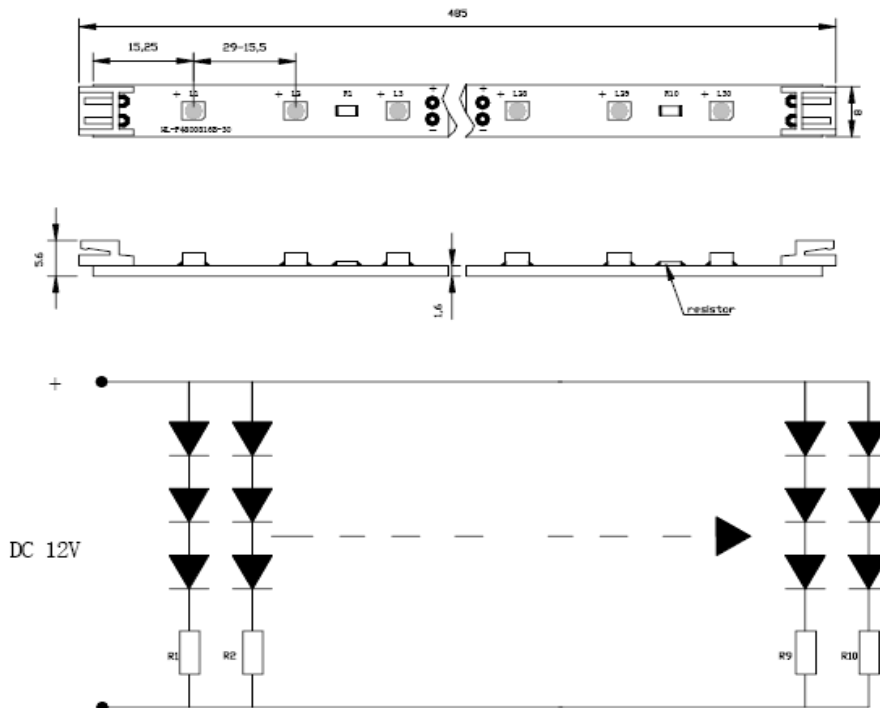
ATTENTION
 OBSERVE PRECAUTIONS
 FOR HANDLING
 ELECTROSTATIC
 DISCHARGE
 SENSITIVE
 DEVICES



Features

- 485MMX8MM SMD LIGHT BAR : 30-LED.
- PRINTED CIRCUIT BOARD THICKNESS : 1.6MM
- WORKING VOLTAGE : 12V DC.
- WORKING CURRENT: 200MA.
- LED VIEW ANGLE(2θ1/2):120°.
- PACKAGE: 1PCS / PVC TUBE.

Package Dimensions



Notes:

1. All dimension units are millimeters.
2. All dimension tolerance is ±1mm unless otherwise noted.



LIGHT BAR SERIES

Absolute Maximum Rating at TA=25°C

Parameter	Symbol	Absolute Maximum Rating	Unit
Forward Current	IF	200	mA
Power Dissipation	PD	2,4	W
Electrostatic discharge	ESD	800	V
Operating Temperature	Tstg	-25 ~ +60	°C
Storage Temperature	Tstg	- 40 ~ + 80	°C

Electrical / Optical Characteristics at TA=25°C

Parameter	Symbol	Condition	Min	Typ	Unit
Forward Voltage DC	VF	IF=200mA		12	V
Dominant Wavelength	λ_D	IF=200mA	468	472	nm
Luminous flux	ϕ_V	IF=200mA		24	lm
Recommend Forward Current	IF(rec)	IF=200mA		200	mA

Notes:Tolerance of measurement of luminous intensity \pm 15%.

Package means



APPLICATIONS

- EDGE-LIGHTING OF TRANSPARENT OR DIFFUSED MATERIALS.
- PATH&CONTOUR MARKING.
- EMERGENCY/RESCUE SIGNS.
- TO COUPLE LIGHT INTO TRANSPARENT OR DIFFUSED GLASS .

X-ON Electronics

Largest Supplier of Electrical and Electronic Components

Click to view similar products for [LED Lighting Bars and Strips](#) category:

Click to view products by [Optoflash](#) manufacturer:

Other Similar products are found below :

[ZLF0310W62524](#) [LF1D-F2F-2W-300](#) [HH-SWW320F210W24-COB IP65](#) [HH-SNW320F210W12-COB IP65](#) [HH-SNW320F010W12-COB IP20](#) [HH-SNW320F210W24-COB IP65](#) [HH-SNW320F010W24-COB IP20](#) [HH-SNW528F210W12-COB IP65](#) [HH-SNW528F010W12-COB IP20](#) [HH-SNW528F010W24-COB IP20](#) [HH-SCW320F210W12-COB IP65](#) [HH-SCW320F010W12-COB IP20](#) [HH-SCW528F210W12-COB IP65](#) [HH-SCW528F010W12-COB IP20](#) [HH-SR528F010W12-COB IP20](#) [HH-SR528F010W24-COB IP20](#) [LF2D-EN2F-2W-A](#) [PUUA-100LLL-NK2P](#) [HC-F12V-3535 PCBA](#) [HC-F12V-WS2811-3535](#) [HC-F24V-6L-36LED-W-WS2821/IP20](#) [HC-F5V-144L-144LED-B-WS2813 IP20](#) [HC-F5V-144L-144LED-B-WS2813 IP65](#) [HC-F5V-144L-144LED-W/IP65](#) [HC-F5V-144L-144LED-W-WS2813 IP20](#) [HC-F5V-30L-30LED-B-WS2813 IP20](#) [HC-F5V-60L-60LED-B-WS2813 IP20](#) [HC-F5V-60L-60LED-W-WS2813 IP65](#) [HC-T12V-10L-30LED-W/IP20](#) [HC-T12V-16L-48LED-W/IP20](#) [HC-T12V-16L-48LED-W/IP65](#) [HC-T12V-20L-60LED-W/IP65](#) [LFBHL-SW860-24V-12D83-20](#) [LFBLL-SW860-24V-5S200-20-IC](#) [LFBML-MW827860-24V-12D83-20](#) [LFBML-SW827-24V-6S167-20](#) [LM-SAG1-W2](#) [LMV-MINI-W2](#) [LS-2835W120RN](#) [LS-2835W120RN1](#) [LS-2835W60RN2](#) [LS-2835WW120R-1](#) [LS-2835WW60RN](#) [LS-3014WW60RN](#) [LS-3014WW60RN3](#) [LS-3528W60RN-1](#) [LS-3528W60RN-2](#) [LS-5050F60R-2](#) [LS-5050F60RN-3](#) [LS-5050W30RN](#)