

|      |                                 |
|------|---------------------------------|
| REV  | DESCRIPTION                     |
| A    | RELEASED TO PRODUCTION          |
| B    | COMPLETELY RE-DRAWN             |
| C    | REMOVED NOTE 2. AND LED 45° CUT |
| D    | SEE ECN #1337 FOR CHANGES       |
| ENGR | DATE                            |
| SM   | 03.12.01                        |
| SM   | 03.12.01                        |
| SM   | 03.23.01                        |
| SK   | 07.10.07                        |

TOLERANCES  
UNLESS NOTED  
.XX $\pm$ .010  
.XXX $\pm$ .005  
FRAC $\pm$ 1/64  
ANG $\pm$ 1°

RE: RICHCO, INC.

RICHCO INC.  
PO BOX 804238, CHICAGO, 60680  
(773) 539-4060

FILE # SOLEDS  
DWN: S.M.  
APP:

DT: 03/12/01  
DT:

PART #

SEE TABLE

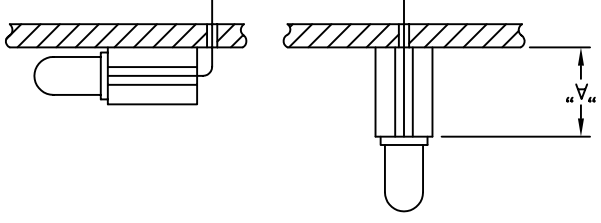
PRINT TYPE  
CA

TITLE: SQUARE LED SPACERS

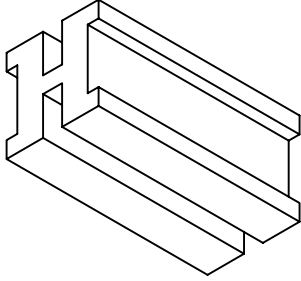
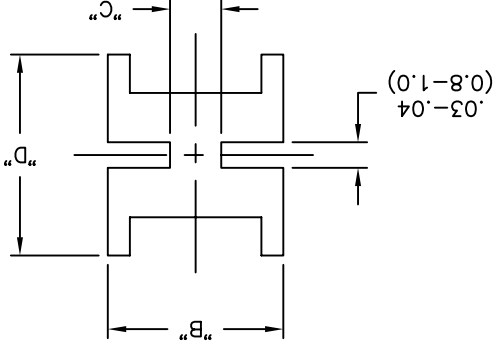
DWG IN (MM)  
FINAL



NOTES:  
1. MATERIAL: PVC (RMS-26).  
2. COLOR: BLACK.



TYPICAL APPLICATIONS



| PART NO.      | "A" $\pm$ .020<br>( $\pm$ 0.5) | "B"       | "C"       | "D" REF.  | LED TYPE |
|---------------|--------------------------------|-----------|-----------|-----------|----------|
| SOLEDS1-4-26  | .250 (6.4)                     | .17 (4.3) | .03 (0.8) | .17 (4.3) | T-1      |
| SOLEDS1-6-26  | .375 (9.5)                     |           |           |           |          |
| SOLEDS1-8-26  | .500 (12.7)                    |           |           |           |          |
| SOLEDS2-4-26  | .250 (6.4)                     | .24 (6.1) | .07 (1.8) | .27 (6.9) | T-1 3/4  |
| SOLEDS2-6-26  | .375 (9.5)                     |           |           |           |          |
| SOLEDS2-8-26  | .500 (12.7)                    |           |           |           |          |
| SOLEDS2-10-26 | .625 (15.9)                    |           |           |           |          |
| SOLEDS2-12-26 | .750 (19.1)                    |           |           |           |          |

## X-ON Electronics

Largest Supplier of Electrical and Electronic Components

*Click to view similar products for [LED Mounting Hardware](#) category:*

*Click to view products by [Richco](#) manufacturer:*

Other Similar products are found below :

[00624500](#) [00624250](#) [00624375](#) [00624750](#) [7047](#) [990-4901-010](#) [990-8115-001](#) [SPC040](#) [CMP22](#) [CNX\\_440\\_X02\\_4\\_1\\_06](#)  
[CNX\\_460\\_E02\\_4\\_1\\_12](#) [CNX440-X02-4-2-24](#) [M16-T1](#) [L2K-L4GD](#) [L2K-L5XL](#) [LDN51-125SL/BT](#) [RNG-190](#) [515-0005F](#) [CM00624625](#)  
[CNX440E034612](#) [CNX\\_460\\_E02\\_4\\_1\\_04](#) [FS108NA](#) [7046](#) [7056](#) [S202-K2](#) [T50RS5.NB3P](#) [KT4TN](#) [SN3486](#) [M16-T2-S](#) [RTN\\_441](#) [ELM 2-](#)  
[1.5MM](#) [LEDM-2-11](#) [ELM 3-1.500](#) [CM00624375](#) [CM00624375](#) [CM00624900](#) [CNX410-056-X-4-2-24](#) [HLMP-0103](#) [FIX-LEDH-10.5](#) [FIX-](#)  
[LEDH-11](#) [FIX-LEDH-12](#) [FIX-LEDH-14](#) [FIX-LEDH-18](#) [FIX-LEDH-4](#) [FIX-LEDH-4.5](#) [FIX-LEDH-7.5](#) [FIX-LEDT-11](#) [FIX-LEDT-20](#) [FIX-](#)  
[LEDT-26](#) [FIX-LEDT-9](#)