



**Opto Plus LED Corp.**

**OPL-3004GD-60-H1A**

**3 mm Dia LED Lamp**

● **EDIT HISTORY**

Version A : Mar.05, 2015

Preliminary Spec.

Manufacture	Examination	Approving



# Opto Plus LED Corp.

## OPL-3004GD-60-H1A

3 mm Dia LED Lamp

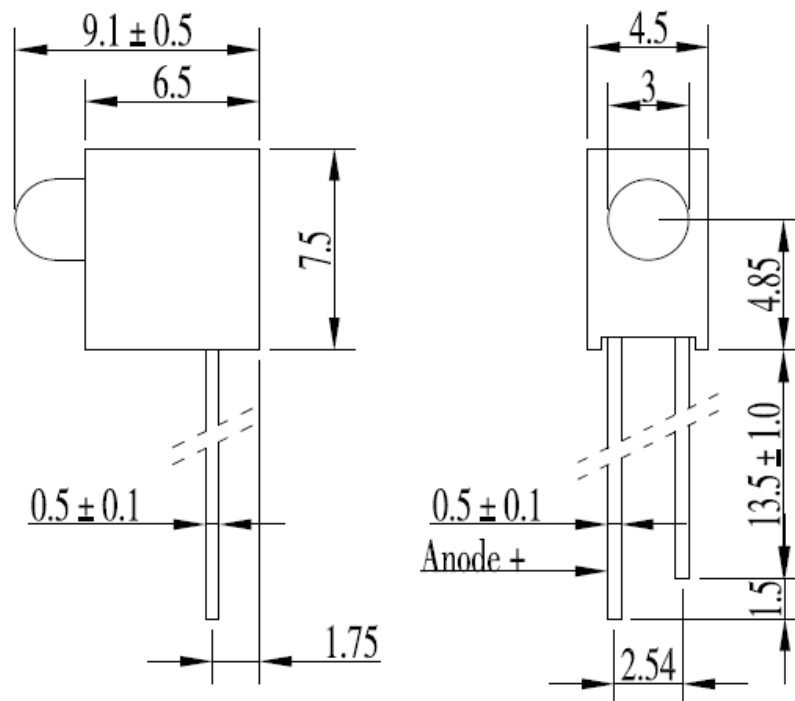
### DESCRIPTION

Chip Material : GaP/GaP  
Emitting Color : Green  
Lens Color : Green Diffused

### FEATURES

Low power consumption.  
High efficiency  
Round type  
T1(3mm)diameter  
With Flange  
Solder leads without stand-off  
Compliant with RoHs

### PACKAGE DIMENSIONS



Tolerance is  $\pm 0.25$ mm

Unless Otherwise Specified



# Opto Plus LED Corp.

## OPL-3004GD-60-H1A

3 mm Dia LED Lamp

### ● G: YELLOW GREEN (GaP/GaP)

ABSOLUTE MAXIMUM RATING AT Ta=25°C

Parameter	Symbol	Yellow Green	Unit
Power dissipation	P <sub>AD</sub>	80	mW
Reverse voltage	V <sub>R</sub>	5	V
Continuous forward current	I <sub>AF</sub>	25	mA
Temperature coefficient	I/C	0.33	mA/°C
Pulse current	I <sub>PF</sub>	100	mA
Operating temperature	T <sub>OPR</sub>	-25 to +85	°C
Storage temperature	T <sub>STG</sub>	-30 to +100	°C
Soldering Condition	T <sub>sd</sub>	260°C/5set	°C

ELECTRICAL - OPTICAL CHARACTERISTICS AT Ta=25°C

Characteristic	Symbol	Condition	Min.	Typ.	Max.	Unit
Forward voltage	V <sub>F</sub>	I <sub>F</sub> =20mA	-	2.2	2.6	V
Reverse current	I <sub>R</sub>	V <sub>R</sub> =5V	-	-	50	μA
Peak wavelength	λ <sub>P</sub>	I <sub>F</sub> =20mA	-	568	-	nm
Dominant wavelength	λ <sub>D</sub>	I <sub>F</sub> =20mA	-	572	-	nm
Luminous intensity	I <sub>V</sub>	I <sub>F</sub> =20mA	26.6	52.0	-	mcd
Spectral radiation bandwidth	Δλ	I <sub>F</sub> =20mA	-	30	-	nm
Viewing Angle	2θ <sub>1/2</sub>	I <sub>F</sub> =20mA	-	60	-	deg



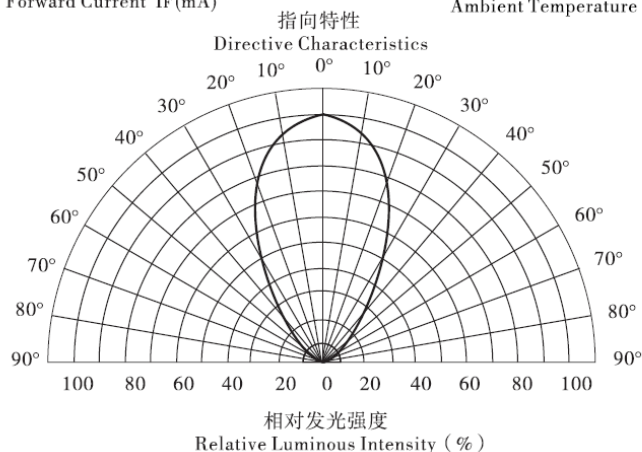
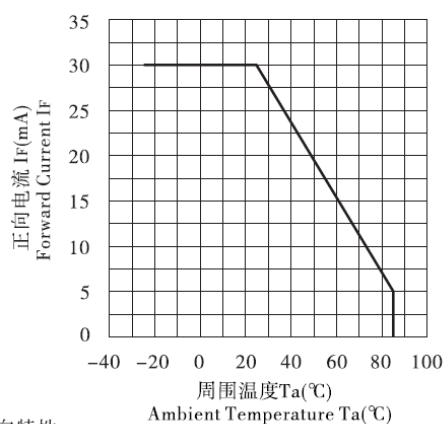
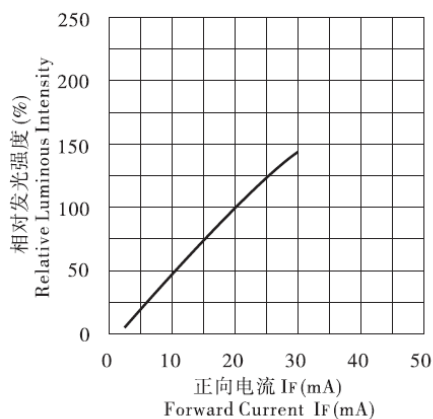
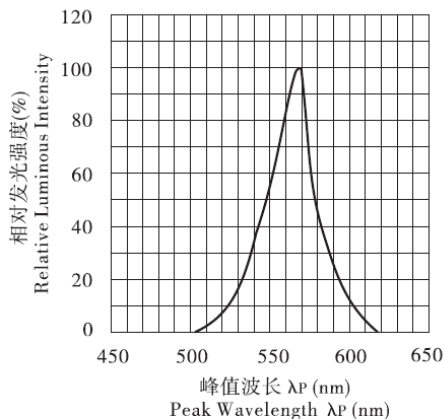
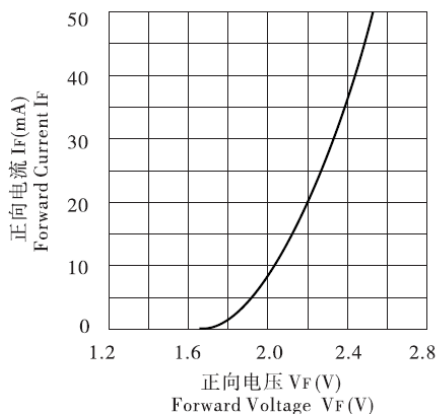
# Opto Plus LED Corp.

## OPL-3004GD-60-H1A

### 3 mm Dia LED Lamp

#### ● G: YELLOW GREEN (GaP/GaP)

Typical Electro-optical Characteristic Curves  
(25 °C Free Air Temperature Unless Otherwise Specified)



## X-ON Electronics

Largest Supplier of Electrical and Electronic Components

*Click to view similar products for [LED Panel Mount Indicators](#) category:*

*Click to view products by [Opto Plus Led Corp](#) manufacturer:*

Other Similar products are found below :

[607-1312-310F](#) [607-3232-140F](#) [6091M1-24V](#) [6091M5-24V](#) [6091M7-24V](#) [821-0331-503](#) [FL2870C8R](#) [FL2950WL7B](#) [FL589WL8R](#)  
[Q6P3BXXB12E](#) [H8630FBBA3](#) [MPC5ADW6.0](#) [DX1091GN](#) [NL177WL3G](#) [NL276C3G](#) [NL2950BWL3G](#) [NL2950CWL2R](#) [NL589WL2R](#)  
[NL67C3G](#) [NL67C3R](#) [2191L1-12V](#) [PB22SIOL0RG](#) [PB22SPPM41R](#) [PB22SPPM61R](#) [LE177C5B](#) [LH1048BSWL3702](#) [LH1048BWL3702](#)  
[LH382A](#) [LHM62B](#) [SSI-LXH387USBD-150](#) [SSI-LXH9ZIC40587](#) [SSP-LXS110818BA](#) [FL2950BWL7R](#) [FL2950WL7R](#) [FL2951WL8G](#)  
[FL2951WL8R](#) [FL589C7R](#) [FL67C7R](#) [FL67WL8G](#) [2191QU7-24V](#) [2191U1-12V](#) [2191U5-12V](#) [2191U5-6V](#) [2191U7-12V](#) [249-4167-3734-504F](#) [Q6P5BXXG02E](#) [3990A7](#) [5110F3-12V](#) [MPC5BCW18.0](#) [556-1237-801F](#)