



Opto Plus LED Corp.

OPL-3004YD-60-H1A

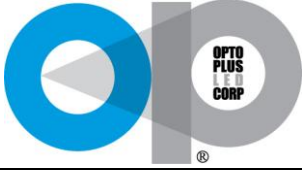
3 mm Dia LED Lamp

● **EDIT HISTORY**

Version A : Mar.05, 2015

Preliminary Spec.

Manufacture	Examination	Approving



Opto Plus LED Corp.

OPL-3004YD-60-H1A

3 mm Dia LED Lamp

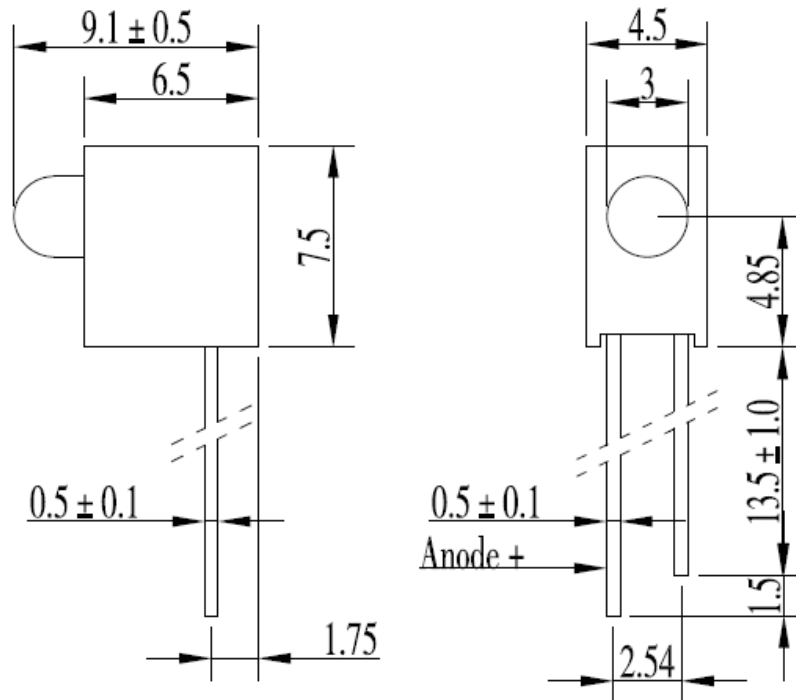
DESCRIPTION

Chip Material : GaAsP /GaAs
Emitting Color : Yellow
Lens Color : Yellow Diffused

FEATURES

Low power consumption.
High efficiency
Round type
T1(3mm)diameter
With Flange
Solder leads without stand-off
Compliant with RoHs

PACKAGE DIMENSIONS



Tolerance is ± 0.25 mm

Unless Otherwise Specified



Opto Plus LED Corp.

OPL-3004YD-60-H1A

3 mm Dia LED Lamp

● Y: YELLOW (GaAsP/GaP)

ABSOLUTE MAXIMUM RATING AT Ta=25°C

Parameter	Symbol	Yellow	Unit
Power dissipation	P_{AD}	60	mW
Reverse voltage	V_R	5	V
Continuous forward current	I_{AF}	25	mA
Temperature coefficient	I/C	0.33	mA/°C
Pulse current	I_{PF}	100	mA
Operating temperature	T_{OPR}	-25 to +85	°C
Storage temperature	T_{STG}	-30 to +100	°C
Soldering Condition	T_{sd}	260°C/5set	°C

ELECTRICAL - OPTICAL CHARACTERISTICS AT Ta=25°C

Characteristic	Symbol	Condition	Min.	Typ.	Max.	Unit
Forward voltage	V_F	$I_F = 20mA$	-	2.1	2.5	V
Reverse current	I_R	$V_R = 5V$	-	-	50	μA
Peak wavelength	λ_P	$I_F = 20mA$	-	589	-	nm
Dominant wavelength	λ_D	$I_F = 20mA$	-	590	-	nm
Luminous intensity	I_V	$I_F = 20mA$	19	37.2	-	mcd
Spectral radiation bandwidth	$\Delta\lambda$	$I_F = 20mA$	-	35	-	nm
Viewing Angle	$2\theta_{1/2}$	$I_F = 20mA$	-	60	-	deg



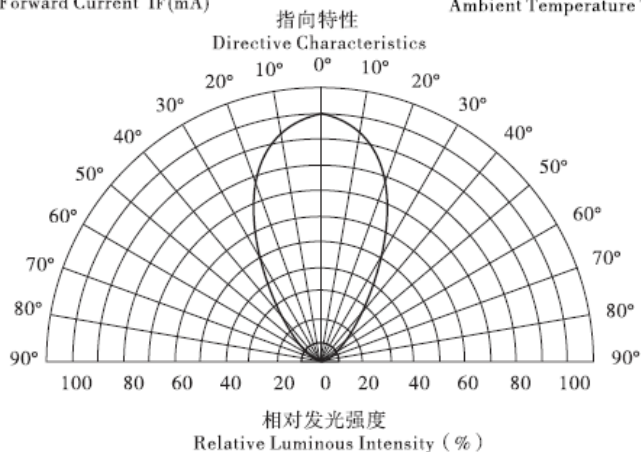
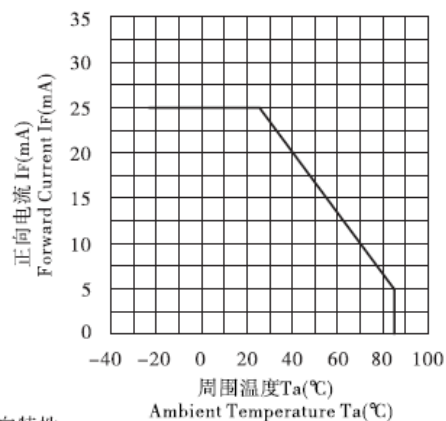
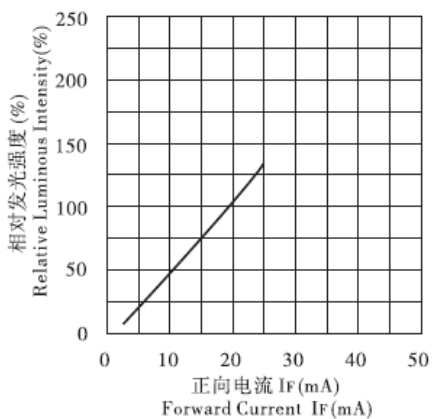
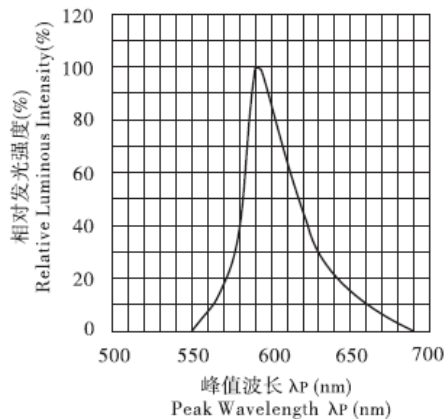
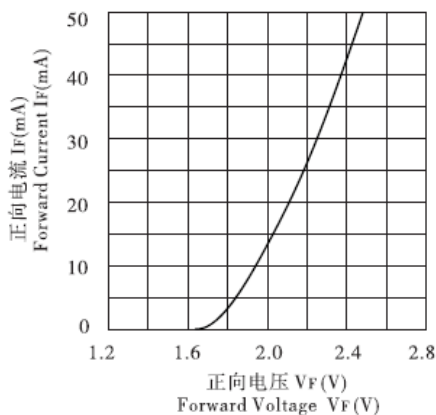
Opto Plus LED Corp.

OPL-3004YD-60-H1A

3 mm Dia LED Lamp

● Y: YELLOW (GaAsP/GaP) CURVE

Typical Electro-optical Characteristic Curves
(25 °C Free Air Temperature Unless Otherwise Specified)



X-ON Electronics

Largest Supplier of Electrical and Electronic Components

Click to view similar products for [LED Panel Mount Indicators](#) category:

Click to view products by [Opto Plus Led Corp](#) manufacturer:

Other Similar products are found below :

[607-1312-310F](#) [607-3232-140F](#) [6091M1-24V](#) [6091M5-24V](#) [6091M7-24V](#) [821-0331-503](#) [FL2870C8R](#) [FL2950WL7B](#) [FL589WL8R](#)
[Q6P3BXXB12E](#) [H8630FBBA3](#) [MPC5ADW6.0](#) [DX1091GN](#) [NL177WL3G](#) [NL276C3G](#) [NL2950BWL3G](#) [NL2950CWL2R](#) [NL589WL2R](#)
[NL67C3G](#) [NL67C3R](#) [2191L1-12V](#) [PB22SIOL0RG](#) [PB22SPPM41R](#) [PB22SPPM61R](#) [LE177C5B](#) [LH1048BSWL3702](#) [LH1048BWL3702](#)
[LH382A](#) [LHM62B](#) [SSI-LXH387USBD-150](#) [SSI-LXH9ZIC40587](#) [SSP-LXS110818BA](#) [FL2950BWL7R](#) [FL2950WL7R](#) [FL2951WL8G](#)
[FL2951WL8R](#) [FL589C7R](#) [FL67C7R](#) [FL67WL8G](#) [2191QU7-24V](#) [2191U1-12V](#) [2191U5-12V](#) [2191U5-6V](#) [2191U7-12V](#) [249-4167-3734-504F](#) [Q6P5BXXG02E](#) [3990A7](#) [5110F3-12V](#) [MPC5BCW18.0](#) [556-1237-801F](#)