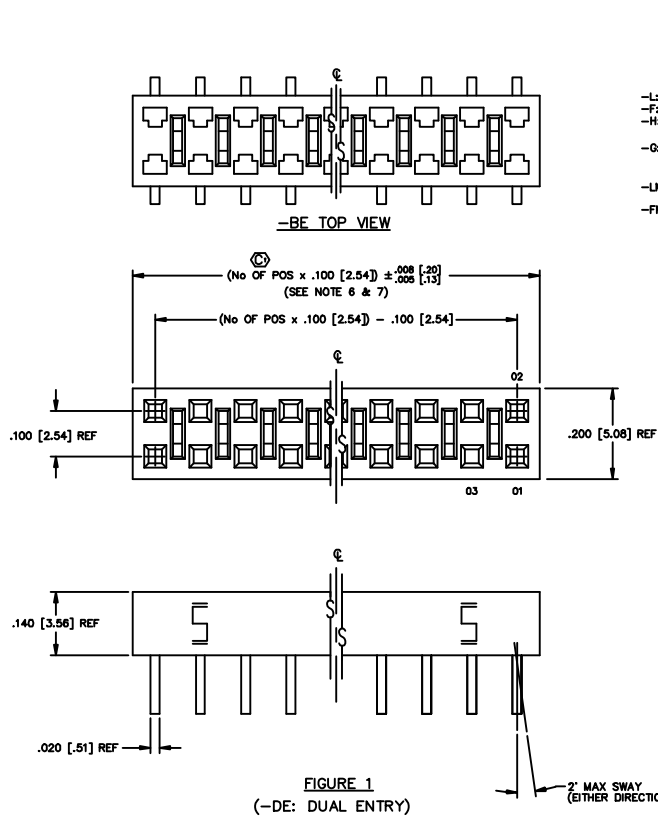
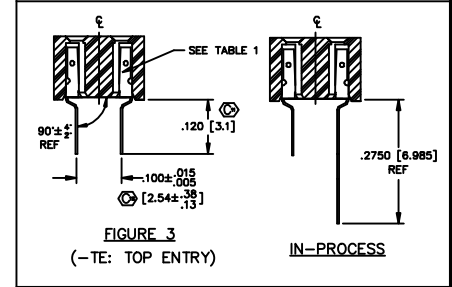
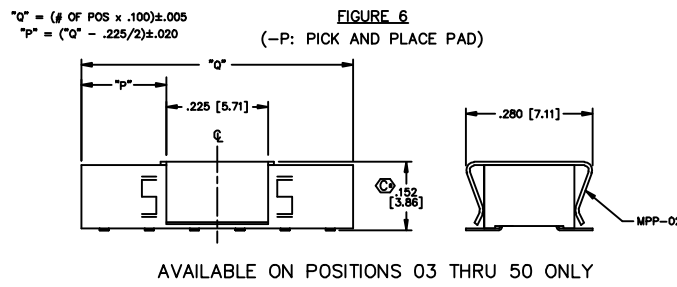
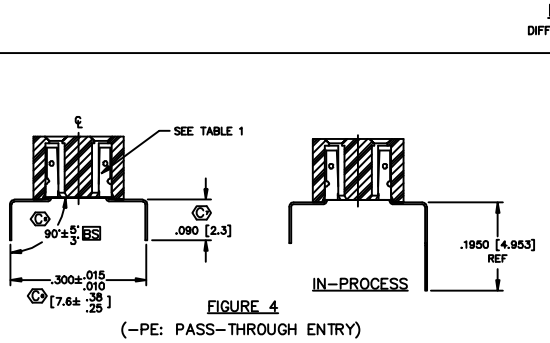
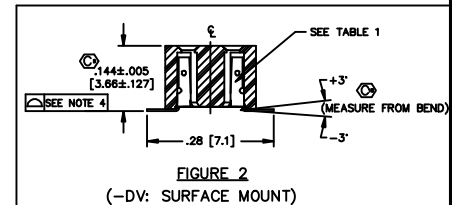
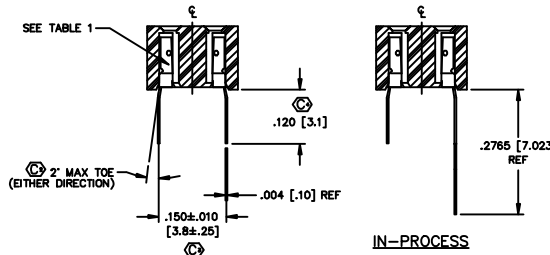


DIMENSIONS ARE IN INCHES		UNLESS OTHERWISE NOTED		TOLERANCES AND ANGLES		TITLE	DWG NO.
ONE PLACE DECIMALS: ±.1 [2.5]	THREE PLACE DECIMALS: ±.005 [.127]			±2°		LOW PROFILE SOCKET STRIP	CLH-1XX-XX-X-XX-X-XX
TWO PLACE DECIMALS: ±.01 [.25]	FOUR PLACE DECIMALS: ±.0020 [.0508]						SHEET 1 OF 2



ENTRY SPEC	CONTACT	INSULATOR
-DE (SEE FIG. 1)	C-73-03-X-X	CLH-XX-D
-DV (SEE FIG. 2)	C-73-01-X-X	CLH-XX-D
-TE (SEE FIG. 3)	C-73-02-X-X	CLH-XX-D
-PE (SEE FIG. 4)	C-73-04-X-X	CLH-XX-D
-BE (SEE FIG. 5)	C-73-01-X-X	CLH-XX-DBE

- NOTES:
- PUSHOUT FORCE TO BE: 1 lb. MIN.
 - [] DIMENSIONS ARE IN MILLIMETERS.
 - PARTS TO BE SYMMETRICAL ABOUT C.
 - FOR POSITIONS -02 THRU -40, COPLANARITY TO BE .004; FOR POSITIONS -41 THRU -51, COPLANARITY TO BE .006.
 - TUBE POSITIONS 03 THRU 51; LAYER PACKAGE POSITION 02. (-PE CAN BE TUBED 02 THRU 51)
 - WILL LOSE A POSITION FOR EVERY CUT MADE ON A SOCKET STRIP; CUT FLASH TO BE .010 [.25] MAX WITH NO FLASH ALLOWED IN HOLES OR EXTENDING BELOW LEADS.
 - ENDWALL AFTER CUTTING: .0255±.003
 - MAX BURR: .003
 - Ⓢ REPRESENTS A CRITICAL DIMENSION.



IMPORTANT NOTE
 THE MANUFACTURER ASSUMES NO RESPONSIBILITY FOR THE USE OF THIS DRAWING FOR ANY PURPOSE OTHER THAN THAT FOR WHICH IT WAS DESIGNED. THE USER SHALL BE RESPONSIBLE FOR THE PROPER USE OF THIS DRAWING AND FOR THE PROTECTION OF THE RIGHTS OF THE MANUFACTURER.

MATERIAL:
 BODY: VECTRA E130
 VECTRA E130
 CONTACT: 521 PHOSPHOR BRONZE
 FULL HARD

8320 PROD/ASSEMBLY/100
 CLH-ASMT

samtec

8320 PARK EAST BLVD. NEW ALBANY, INDIANA 47150
 PHONE (812) 944-8733 P.O. BOX 1147
 CODE 58322

MATERIAL: PURVIS 10-4-94 CLH-1XX-XX-X-XX-X-XX
 SHEET 1 OF 2

X-ON Electronics

Largest Supplier of Electrical and Electronic Components

Click to view similar products for [samtec](#) manufacturer:

Other Similar products are found below :

[TW-20-03-H-6-175-225](#) [YTW-20-07-H-6-520-110](#) [TW-10-08-H-D-616-107](#) [TW-15-08-H-D-600-080](#) [TW-30-08-H-D-616-107](#) [MTMM-108-05-H-D-220](#) [MTMM-103-05-H-D-220](#) [MTMM-120-06-H-D-180](#) [SSQ-108-01-SM-S](#) [SSQ-105-01-SM-S](#) [ESQT-112-02-F-D-375](#) [ESQT-135-03-F-D-380](#) [FTSH-111-01-L-DV](#) [QTE-060-01-L-D-A](#) [MSAS-179-ZUGG-18](#) [MTMM-103-05-H-D-300](#) [MTSW-103-07-F-S-240](#) [MTSW-125-24-H-D-285](#) [ERF8-020-05.0-S-DV-K-TR](#) [IDMD-10-T-12.00-A-G-R](#) [IPL1-112-01-L-D-K](#) [IPL1-116-01-H-D](#) [SFML-115-01-S-D](#) [SFML-125-01-S-D](#) [SFSDT-15-28-H-04.50-DR-NDS](#) [LSHM-120-02.5-L-DV-A-N-K-TR](#) [SMS-125-02-S-D](#) [ESQ-110-14-G-D](#) [ESQT-125-03-F-D-310](#) [ESQT-133-03-F-D-350](#) [SO-0515-01-01-02](#) [SQW-120-01-F-D-VS-A](#) [SSQ-111-01-G-S](#) [SSW-110-02-H-D](#) [FJH-50-D-12.00-4](#) [FLE-125-01-G-DV-A](#) [CES-150-01-T-D](#) [QFS-052-01-SL-D-RA](#) [QTE-040-04-L-D-A](#) [QTH-020-04-F-D-DP-A-K-TR](#) [QTH-060-01-F-D-A](#) [QTH-090-04-L-D-A](#) [TFM-110-02-S-D](#) [TFM-115-02-L-DH](#) [TFM-120-12-S-D-LC](#) [TFML-140-02-S-D](#) [TLW-107-05-G-D](#) [TMM-140-03-S-Q](#) [BDL-136-T-E](#) [TSS-132-01-G-S](#)