

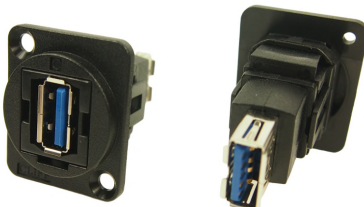
CLIFF

FEED THROUGH CONNECTORS FT Series

The FT Series of true feed through connectors are perfect for developing custom I/O configurations for wall-plates, rack panels, etc. ALL fit within a standard XLR panel cutout, and use common cabling for front and back connections. No soldering, no punch terminations, just use the standard cable for that particular connector style. Mount from the front or back, low rear profile accommodates the tightest “behind the panel” spaces. Available in a wide variety of styles.



Part No.	Description
CP30200G	HDMI A Female to HDMI A, Gold Plated, CSK hole.
CP30200GX	As above with Plain hole.



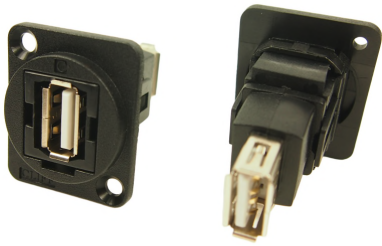
Part No.	Description
CP30205N	USB 3.0 A to USB 3.0 A, Nickel Plated, CSK hole.
CP30205NX	As above with Plain hole



Part No.	Description
CP30206N	USB 3.0 B to USB 3.0 A, Nickel Plated, CSK hole.
CP30206NX	As above with Plain hole



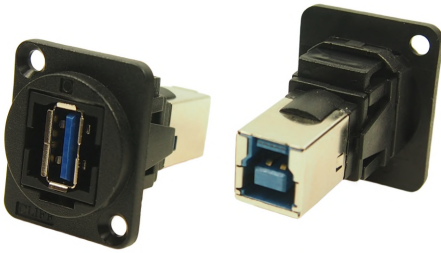
Part No.	Description
CP30207N	USB 2.0 B to USB 2.0 A, Nickel Plated, CSK hole.
CP30207NX	As above with Plain hole



Part No. **Description**
CP30208N USB 2.0 A to USB 2.0 A, Nickel Plated, CSK hole.
CP30208NX As above with Plain hole



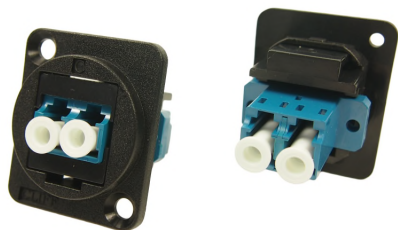
Part No. **Description**
CP30209N USB 2.0 A to USB 2.0 B, Nickel Plated, CSK hole.
CP30209NX As above with Plain hole



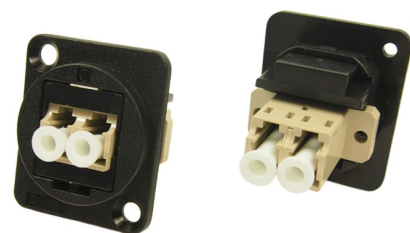
Part No. **Description**
CP30210N USB 3.0 A to USB 3.0 B, Nickel Plated, CSK hole.
CP30210NX As above with Plain hole



Part No. **Description**
CP30211 USB-C to USB-C, Black, CSK hole.
CP30211X As above with Plain hole



Part No. **Description**
CP30213 LC Duplex SM adaptor, Black, CSK Hole
CP30213X As above with Plain hole



Part No. **Description**
CP30214 LC Duplex MM, Black, CSK Hole
CP30214X As above with Plain hole



Part No. **Description**
CP30215 SC Simplex SM, Black, CSK Hole
CP30215X As above with Plain hole

For further information, contact sales@cliffuk.co.uk

Cliff Electronic Components Limited

76 Holmethorpe Avenue, Holmethorpe Ind. Estate,
 Redhill, Surrey RH1 2PF U.K.

Tel: +44 (0)1737 771375 Fax: +44 (0)1737 766012



Visit us online at:



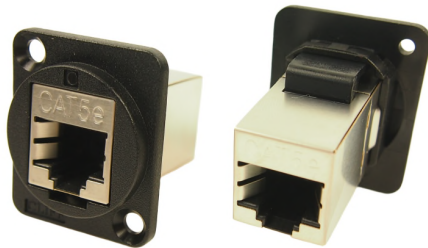
www.cliffuk.co.uk



Part No. **Description**
CP30216 SC Simplex MM, Black, CSK Hole
CP30216X As above with Plain hole



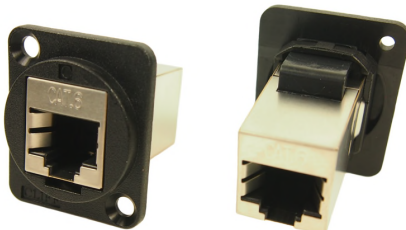
Part No. **Description**
CP30217 Toslink, CSK Hole
CP30217X As above with Plain hole



Part No. **Description**
CP30220S FTP Cat5e RJ45-RJ45, Shielded, CSK Hole
CP30220SX As above with Plain hole



Part No. **Description**
CP30220 UTP Cat5e RJ45-RJ45, CSK Hole
CP30220X As above with Plain hole



Part No. **Description**
CP30222S FTP Cat6 RJ45-RJ45, Shielded, CSK Hole
CP30222SX As above with Plain hole



Part No. **Description**
CP30222 UTP Cat6 RJ45-RJ45, CSK Hole
CP30222X As above with Plain hole



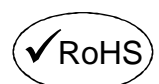
Part No. **Description**
CP30230 RCA Phono RED, CSK Hole
CP30230X As above with Plain hole
CP30231 RCA Phono WHITE, CSK Hole
CP30231X As above with Plain hole
CP30232 RCA Phono YELLOW, CSK Hole
CP30232X As above with Plain hole
 Other colours available on request.

For further information, contact sales@cliffuk.co.uk

Cliff Electronic Components Limited

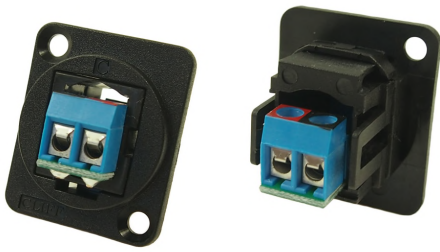
76 Holmethorpe Avenue, Holmethorpe Ind. Estate,
 Redhill, Surrey RH1 2PF U.K.

Tel: +44 (0)1737 771375 Fax: +44 (0)1737 766012



Visit us online at:

www.cliffuk.co.uk



Part No.	Description
CP30240	2 Wire Terminal, CSK Hole
CP30240X	As above with Plain hole

Low voltage use only. Max rating 25VAC, 60VDC, 10A.



Part No.	Description
CP30241	Blanking Plate, CSK Hole
CP30241X	As above with Plain hole

For further information, contact sales@cliffuk.co.uk

Cliff Electronic Components Limited

76 Holmethorpe Avenue, Holmethorpe Ind. Estate,
Redhill, Surrey RH1 2PF U.K.

Tel: +44 (0)1737 771375 Fax: +44 (0)1737 766012



www.cliffuk.co.uk

X-ON Electronics

Largest Supplier of Electrical and Electronic Components

Click to view similar products for [USB Cables / IEEE 1394 Cables category](#):

Click to view products by [Cliff manufacturer](#):

Other Similar products are found below :

[68768-0173](#) [FNY-W6003-01](#) [88764-0800](#) [13805532](#) [148700-1](#) [17-200621](#) [17-250051P](#) [954](#) [AC102012-2](#) [IP-USB1\(C10\)S-RW](#)
[CABLE/RTP/USB/DT](#) [0847290003](#) [10115240-12200LF](#) [RS232-GTD](#) [USBFTVX2SA2N03A](#) [USBFTV2SA2N03A](#) [1689404-1](#) [FTP-](#)
[629Y401](#) [FTP-628Y402](#) [943301-001](#) [FNY-W6022](#) [FNY-W6003-03](#) [1310-1015-05](#) [1310-1019-04](#) [0887283402](#) [UA-30AMFM-SL7B02](#) [UA-](#)
[30AMFM-SL7B01](#) [UA-30AFM-LD7B03](#) [UA-30AMFM-SL7B03](#) [USBAPSCC7202A](#) [UES-1001A160](#) [UES-1003A160](#)
[USBFTVX7SA2N20A](#) [USBFTVX2SA2N20A](#) [USBFTV2PEMSA2N10A](#) [FTP-629Y602](#) [USBCAMCM100](#) [USB A/F*2 to 2.54 2*5P-SH](#)
[L=400mm](#) [EP-CBUSB10P2FLT](#) [1310-1033-01](#) [1310-1037-04](#) [ASR-USB](#) [68784-0075](#) [17-241361](#) [17-230471](#) [217B-BC02](#) [USB-29](#) [19800-](#)
[010500-200-RS](#) [USB+MINI DIN 6P WITH BKT](#) [088738-8100](#)