



ul. Konstytucyjna 79/81  
95-200 Pabianice  
tel/fax 48 42 2270971 POLAND  
e-mail: fif@fif.com.pl

## CP-709 VOLTAGE RELAYS one-phase type

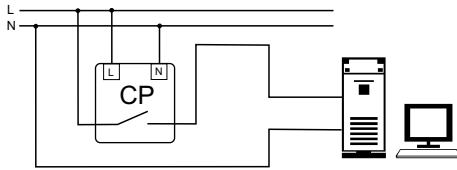


www.fif.com.pl

F&F products are covered by an 24 months warranty from date of purchase

### PURPOSE

Voltage relays CP-709 serves to voltage control in single phase mains and to protect receiver against the effects of voltage collapse or increase beyond set values.



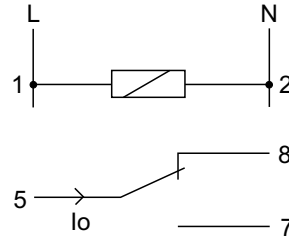
### FUNCTIONING

Lower voltage value ( $U1$ ) and upper voltage value ( $U2$ ) are set by means of potentiometers. It is so-called eye of voltage, in limits of which can occur changes of phases voltages that do not cause activation of relay. Supplied a relay is signalized by shine of LED green U. Correct value of voltage is signalized by shine of yellow LED. (position of joint 5-7). Change of phase voltage on one of phases above or below set voltage thresholds will cause activation of relay (switch joints to position 5-8). Decrease of voltage below establish value  $U1$  is signalized by shine of LED red ( $U1$ ). Increase of voltage below establish value  $U2$  is signalized by shine of LED red ( $U2$ ). Reactivation follows automatically return of correct voltage value.

### ASSEMBLY

1. Take OFF the power.
2. Put on the relay on the rail in the switchgear box.
3. Connected to installation with wiring diagram.
4. Set to voltage thresholds  $U1$  and  $U2$ .

### WIRING DIAGRAM



### TECHNICAL DATA

supply	150÷450V AC
current load	<16A
joint	1P
sygnalling of supply	4×LED
voltage activation treshold	
lower $U1$	150÷210V
upper $U2$	230÷260V
hystereisis	
for $U1$	5V
for $U2$	5V
activation time	
for $U1$	0,5sec
for $U2$	0,1sec
recovery time	
for $U1$	1,5sec
for $U2$	1,5sec
power consumption	0,8W
working temperature	-25÷50°C
connection	screw terminals 2,5mm <sup>2</sup>
dimensions	1 module (18mm)
fixing	on rail TH-35

## X-ON Electronics

Largest Supplier of Electrical and Electronic Components

*Click to view similar products for [General Purpose Relays](#) category:*

*Click to view products by [F&F](#) manufacturer:*

Other Similar products are found below :

[APF30318](#) [JVN1AF-4.5V-F](#) [PCN-105D3MHZ](#) [5JO-10000S-SIL](#) [5JO-1000CD-SIL](#) [5JO-400CD-SIL](#) [LY2S-AC220/240](#) [LYQ20DC12](#)  
[6031007G](#) [6131406HQ](#) [6-1393099-3](#) [6-1393099-8](#) [6-1393122-4](#) [6-1393123-2](#) [6-1393767-1](#) [6-1393843-7](#) [6-1415012-1](#) [6-1419102-2](#) [6-1423698-4](#) [6-1608051-6](#) [6-1608067-0](#) [6-1616170-6](#) [6-1616248-2](#) [6-1616282-3](#) [6-1616348-2](#) [6-1616350-1](#) [6-1616350-8](#) [6-1616358-7](#) [6-1616359-9](#) [6-1616360-9](#) [6-1616931-6](#) [6-1617039-1](#) [6-1617052-1](#) [6-1617090-2](#) [6-1617090-5](#) [6-1617347-5](#) [6-1617353-3](#) [6-1617801-8](#) [6-1617802-2](#) [6-1618107-9](#) [6-1618248-4](#) [M83536/1-027M](#) [CX-4014](#) [MAHC-5494](#) [MAVCD-5419-6](#) [703XCX-120A](#) [7-1393100-5](#) [7-1393111-7](#)  
[7-1393144-5](#) [7-1393767-8](#)